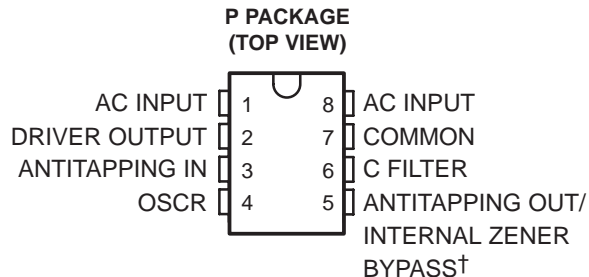


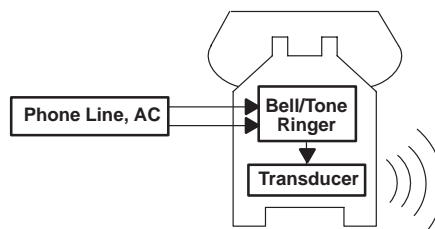
TCM1501B, TCM1506B, TCM1512B TCM1531, TCM1532, TCM1536, TCM1539 TELEPHONE TONE-RINGER DRIVERS

SCTS020 – MARCH 1986 – REVISED APRIL 1987

- **Electronic Replacement for Electromechanical Telephone Bell When Used With Transducer**
- **Designed to Meet or Exceed FCC Part 68 Class B Ringer Requirements**
- **Low-Cost External Component Requirements**
- **Low External Component Count**
- **High Standby Input Impedance
1 M Ω Typ**
- **Low Ringer Equivalency Number
< 1 Typ**
- **Single-Ended High-Voltage Output Compatible With Piezo Transducer or Transformer-Coupled Speaker**
- **Reliable BIFET \ddagger Process Technology Provides Efficient High-Voltage Operation**
- **On-Chip High-Voltage Full-Wave Diode Bridge Rectifier and Output Voltage Regulator**
- **On-Chip Circuitry Provides Ring Rejection of Rotary Dial Transients, Lightning, and Induced High-Voltage Transients**
- **On-Chip Thyristor Coupled With Additional External Components Provides Enhanced Rejection of Dial Pulses**
- **TCM1501B, TCM1512B, and TCM1506B Are Improved Direct Replacements for TCM1501A, TCM1512A, and TCM1506A, Respectively**
- **Requires Only a Single-Value Oscillator Resistor (Eliminates Binning Codes of the TCM15xxA Series)**



† Antitapping output for TCM1531, TCM1532, TCM1536, and TCM1539. Internal zener bypass for B-suffix versions.



**TYPICAL CHARACTERISTICS
TELEPHONE TONE RINGER DRIVER FAMILY**

PART NO.	NORMAL OUTPUT CENTER FREQUENCY (Hz)	WARBLE RATIO (f _H :f _L)	NORMAL WARBLE FREQ. (Hz)
TCM1501B, TCM1531	2000	8:7	7.8
TCM1512B, TCM1532	1250	8:7	9.8
TCM1506B, TCM1536	500	5:4	7.8
TCM1539	2000	5:4	31.2

description

The TCM1501B, TCM1506B, TCM1512B, TCM1531, TCM1532, TCM1536, and TCM1539 are monolithic integrated circuit telephone tone-ringer drivers that, when coupled with an appropriate transducer, replace the electromechanical bell. These devices are designed using BIFET technology for use with either a Piezo transducer or an inexpensive transformer-coupled speaker to produce a pleasing tone composed of a high frequency (f_H) alternating with a low frequency (f_L) resulting in a warble tone. Each device is powered and activated by the telephone line ring voltage, which may vary from 40 V_{rms} to 150 V_{rms} at frequencies from 15.3 Hz to 68 Hz.



Caution. These devices have limited built-in ESD protection. The leads should be shorted together or the device placed in conductive foam during storage or handling to prevent electrostatic damage to the MOS gates.

\ddagger BIFET – Bipolar, double-diffused, N-channel and P-channel MOS transistors on the same chip – patented process.

PRODUCTION DATA information is current as of publication date. Products conform to specifications per the terms of Texas Instruments standard warranty. Production processing does not necessarily include testing of all parameters.

**TEXAS
INSTRUMENTS**

Copyright © 1987, Texas Instruments Incorporated

TCM1501B, TCM1506B, TCM1512B TCM1531, TCM1532, TCM1536, TCM1539 TELEPHONE TONE-RINGER DRIVER

SCTS020 – MARCH 1986 – REVISED APRIL 1987

description (continued)

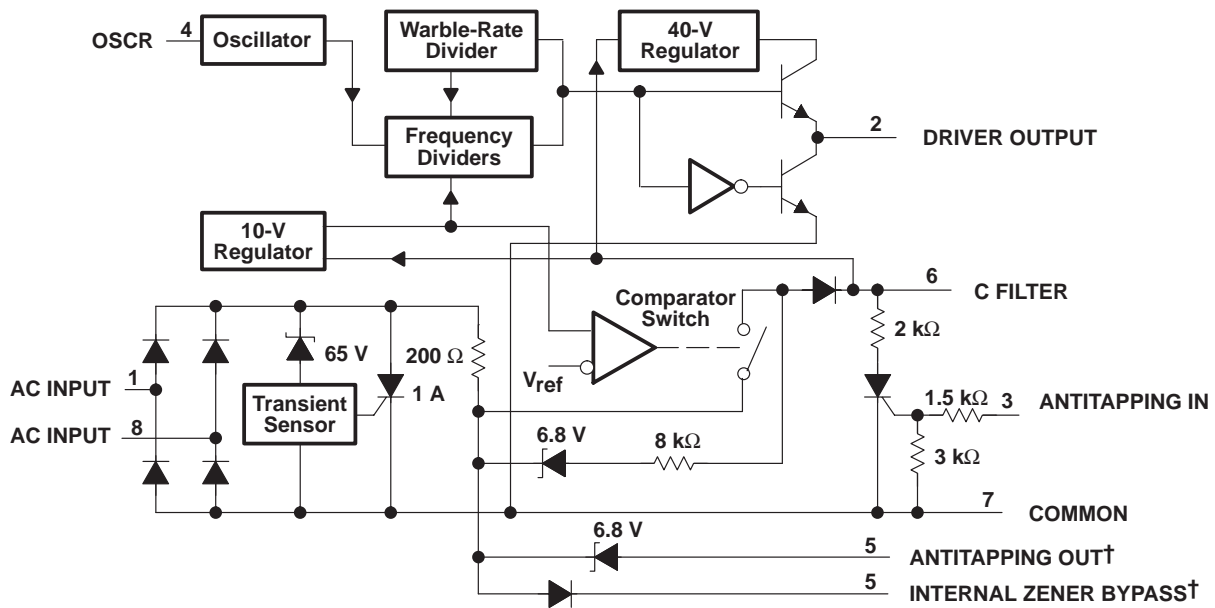
During low-voltage (off-hook) standby, typical input impedance is greater than 1 M Ω ; this prevents interference with telephone DTMF or voice signals without the use of expensive mechanical switches. This high standby impedance is achieved with an on-chip series zener diode that is activated by a differential input voltage of typically 8.9 V at AC INPUT (pins 1 and 8). A voltage level of typically 17 V differential at AC INPUT deactivates the internal zener diode, allowing for more efficient power transfer to the load when the device is in the operating mode. During ringing, the impedance of the applied circuit (see Figures 4, 5, and 6) varies from 30 k Ω to 8 k Ω over the Class B ring signal and is reasonably independent of the output load.

These devices feature lightning and transient protection circuitry designed to withstand transients of 1.5 kV for up to 200 ms duration when used with the proper external circuitry (see Figures 4 and 5). In addition, an on-chip thyristor coupled with an external resistor and capacitor circuit reject dial pulses from parallel telephones so that false ringing (tapping) does not occur (see application information section).

The TCM1501B, TCM1506B, TCM1521B have a provision for bypassing the internal series diode with one of lower voltage, thereby lowering the turn-on threshold of the devices. If the antitapping thyristor is used with these devices, an external zener diode must be added in series with ANTITAPPING OUT/INTERNAL ZENER BYPASS.

These telephone tone-ringer drivers may be used in nontelephone communications applications. For example, the devices can be used with a few external components to produce an inexpensive and highly efficient alarm (see Figure 6).

functional block diagram



† Antitapping output for TCM1531, TCM1532, TCM1536, and TCM1539. Internal zener bypass for B-suffix versions

TCM1501B, TCM1506B, TCM1512B
TCM1531, TCM1532, TCM1536, TCM1539
TELEPHONE TONE-RINGER DRIVERS

SCTS020 – MARCH 1986 – REVISED APRIL 1987

absolute maximum ratings over free-air temperature range (unless otherwise noted)†

Continuous peak-to-peak input voltage, AC INPUT (pin 1 to pin 8) (see Note 1)	110 V
Continuous dc input voltage at C FILTER	55 V
Negative dc voltage, any pin	–1.2 V
Continuous output current, I _O , at DRIVER OUTPUT	12 mA
Continuous output current, ANTITAPPING OUT/INTERNAL ZERNER BYPASS and C FILTER	30 mA
Continuous SCR on-state input current, AC INPUT	200 mA
SCR on-state input current, AC INPUT (pin 1 to pin 8) (duration ≤ 200 μs)	900 mA
Continuous total dissipation at (or below) 25°C free-air temperature (see Note 2)	1000 mW
Operating free-air temperature range, T _A	–40°C to 85°C
Storage temperature range	–40°C to 125°C

† Stresses beyond those listed under “absolute maximum ratings” may cause permanent damage to the device. These are stress ratings only, and functional operation of the device at these or any other conditions beyond those indicated under “recommended operating conditions” is not implied. Exposure to absolute-maximum-rated conditions for extended periods may affect device reliability.

- NOTES: 1. For applications requiring ≥ 38 Vrms, an external resistor and capacitor are required to prevent damage to the device (see Note 3).
 Tip and ring can be connected interchangeably to either pin 1 or pin 8.
 2. For operation above 25°C free-air temperature, derate linearly at the rate of 8 mW/°C.

recommended operating conditions

	MIN	MAX	UNIT
RMS input voltage, V _I (f = 15.3 Hz to 68 Hz) (see Note 3)	40	150	V
Resistor between OSC and COMMON, R _{OSC}	120	180	kΩ
Operating free-air temperature, T _A	–20	70	°C

NOTE 3: Input voltage is applied to AC INPUT through a series 2.2-kΩ ± 10% resistor and a 0.47-μF ± 10% capacitor (see Figures 4, 5, and 6).



**TCM1501B, TCM1506B, TCM1512B
TCM1531, TCM1532, TCM1536, TCM1539
TELEPHONE TONE-RINGER DRIVER**

SCTS020 – MARCH 1986 – REVISED APRIL 1987

electrical characteristics at 25°C free-air temperature, $R_L = \text{open}$, $C_{(\text{fltr})} = 10 \mu\text{F}$, $f = 20 \text{ Hz}$ (unless otherwise noted) (see Figure 2)

detector section

PARAMETER	TEST CONDITIONS	MIN	TYP	MAX	UNIT
Ringing start threshold voltage	ANTITAPPING OUT/INTERNAL ZENER BYPASS open, $R_L = 4 \text{ k}\Omega$		19	28	V
Ringing start threshold rms voltage	ANTITAPPING OUT/INTERNAL ZENER BYPASS open, $R_L = 4 \text{ k}\Omega$, $f = 15.3 \text{ Hz}$			40	V
Ringing stop threshold voltage	ANTITAPPING OUT/INTERNAL ZENER BYPASS open, $R_L = 4 \text{ k}\Omega$	7	11		V
Ringing start threshold voltage	Antitapping thyristor activated		40		V
ANTITAPPING IN voltage required to activate antitapping thyristor			1		V
ANTITAPPING IN input current required to activate antitapping thyristor			0.2		mA
Standby input impedance	$V_I = 3 \text{ V}$, $f \leq 20 \text{ kHz}$	0.1	1		M Ω
	$V_I = 3 \text{ V}$, $f \leq 20 \text{ kHz}$, See Note 5		10		k Ω
Impedance when ringing	$V_I = 40 \text{ V}$, $R_L = 4 \text{ k}\Omega$, $f = 15.3 \text{ Hz}$		25		k Ω
	$V_I = 130 \text{ V}$, $R_L = 4 \text{ k}\Omega$		22		
Operating current	DRIVER OUTPUT open, $V_I = 40 \text{ V}$			1.3	mA
Low-level input current	$V_I = 5 \text{ V}$			20	μA
SCR trigger voltage (AC INPUT)	All pins open, $I_I \leq 125 \text{ mA}$ (see Note 4)	50	60	100	V
SCR trigger current (AC INPUT)	All pins open, $I_I \leq 100 \text{ V}$ (see Note 4)	55	80	110	mA
SCR input hold current	See Note 4			10	mA

NOTES: 4. These parameters are measured using pulse techniques ($t_w \leq 200 \mu\text{s}$, duty cycle $\leq 5\%$).

5. ANTITAPPING OUT/INTERNAL ZENER BYPASS connected to C FILTER, and C FILTER connected to COMMON through a 100- Ω resistor.

electrical characteristics at 25°C free-air temperature, $C_{(\text{fltr})} = 10 \mu\text{F}$, $f = 20 \text{ Hz}$ (unless otherwise noted) (see Figure 2)

output section

PARAMETER	TEST CONDITIONS	MIN	TYP	MAX	UNIT
Output voltage, DRIVER OUTPUT	$V_I = 17 \text{ V}$, $I_O = 2 \text{ mA}$, See Note 6		10		V
	$V_I = 50 \text{ V}$, $I_O = 5 \text{ mA}$, See Note 6		44		
	$V_I = 40 \text{ V}$, $I_O = 2 \text{ mA}$, $f = 16 \text{ Hz}$		8		
	$V_I = 150 \text{ V}$, $I_O = 2 \text{ mA}$, $f = 15.3 \text{ Hz}$		40		
Output voltage, C FILTER (see Note 7)	$V_I = 150 \text{ V}$, $f = 15.3 \text{ to } 68 \text{ Hz}$			55	V
High-level output current	$V_I = 50 \text{ V}$, $V_{OH} = 43 \text{ V}$		-15		mA
Low-power output current	$V_I = 50 \text{ V}$, $V_{OL} = 1.5 \text{ V}$, See Note 6		11		mA

NOTES: 6. Devices must be forced to the required output state by taking OSC R to 8 V and toggling to 0 V as required. This stops the on-chip oscillator.

7. Normal device operation requires that a capacitor be connected from C FILTER to COMMON. A 10- μF capacitor is recommended for optimum antitapping vs turn-off-time performance of the circuit. Increasing or decreasing the value of this capacitor will respectively increase or decrease the antitapping capabilities of the circuit.



TCM1501B, TCM1506B, TCM1512B
TCM1531, TCM1532, TCM1536, TCM1539
TELEPHONE TONE-RINGER DRIVERS

SCTS020 – MARCH 1986 – REVISED APRIL 1987

oscillator section

PARAMETER	TEST CONDITIONS	MIN	TYP	MAX	UNIT	
Output tone frequency High tone frequency Low tone frequency	$R_{osc} = 150\text{ k}\Omega \pm 1\%$	TCM1501B, TCM1531	1983/1736	2133/1876	2283/1998	Hz
		TCM1512B, TCM1532	1239/1085	1333/1167	1427/1249	
		TCM1506B, TCM1536	516/414	555.5/445.5	595/477	
		TCM1539	2066/1653	2222/1776	2378/1903	
Warble frequency	$R_{osc} = 150\text{ k}\Omega \pm 1\%$	TCM1501B, TCM1531	7.8		Hz	
		TCM1512B, TCM1532	9.8			
		TCM1506B, TCM1536	7.8			
		TCM1539	31.2			
Temperature coefficient of frequency	$T_A = -20^\circ\text{C}$ to 70°C	± 0.05			%/°C	

PARAMETER MEASUREMENT INFORMATION

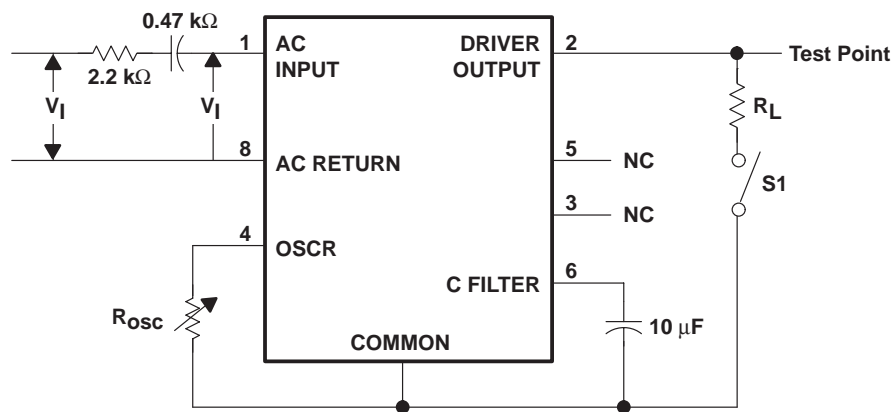
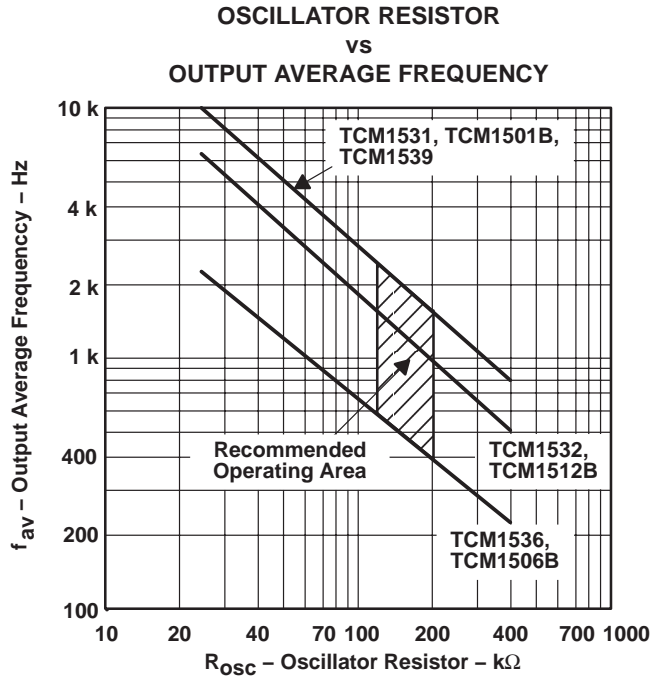


Figure 1. Test Circuit

**TCM1501B, TCM1506B, TCM1512B
TCM1531, TCM1532, TCM1536, TCM1539
TELEPHONE TONE-RINGER DRIVER**

SCTS020 – MARCH 1986 – REVISED APRIL 1987

TYPICAL CHARACTERISTICS



APPLICATION INFORMATION

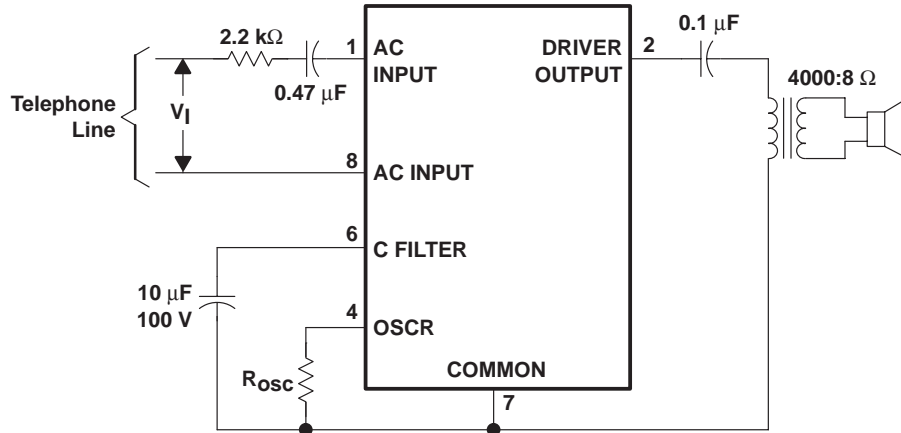


Figure 3. Telephone Application – Speaker Drive



APPLICATION INFORMATION

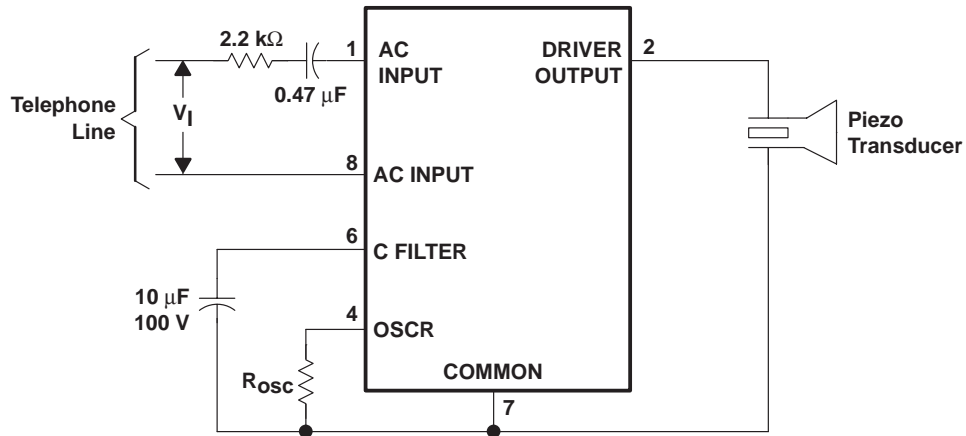
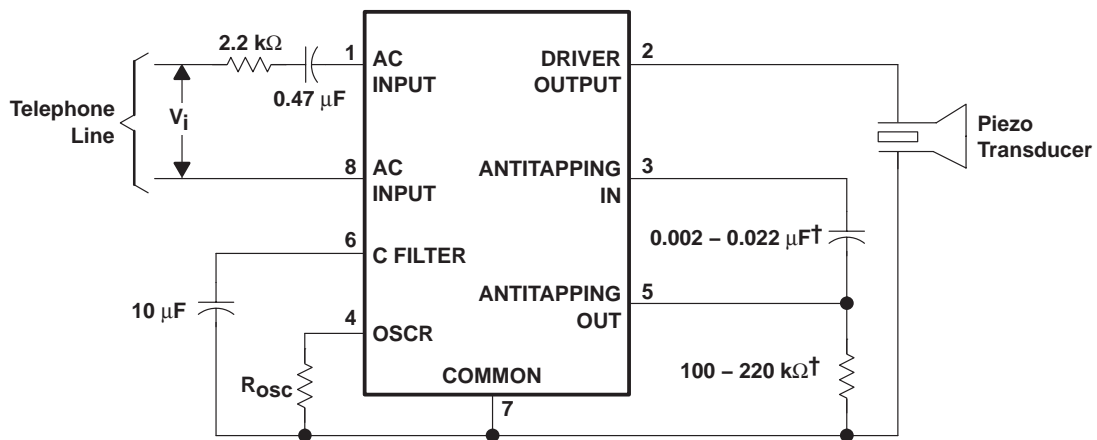


Figure 4. Telephone Application – Piezo Drive



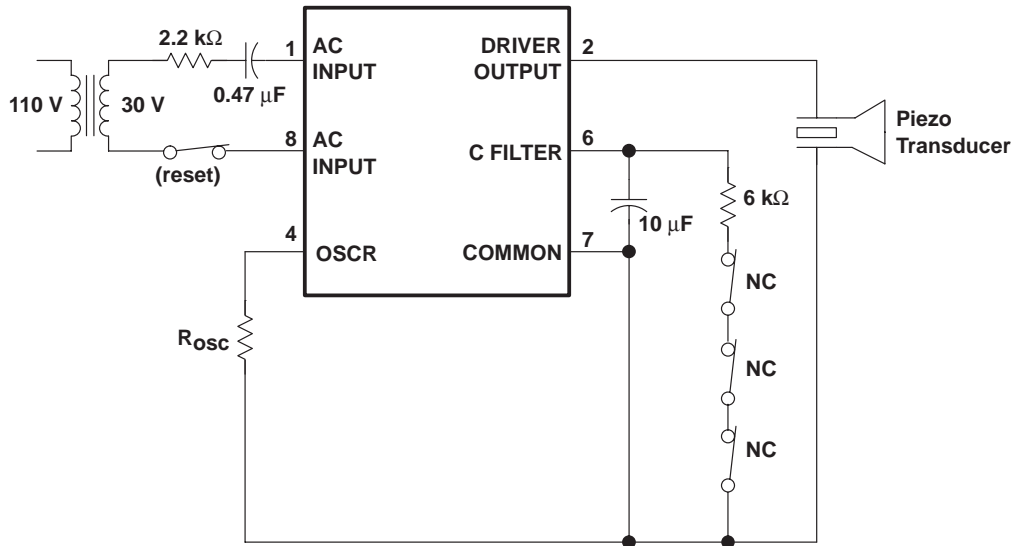
† Optimum values to be determined by specific antitapping requirements.

Figure 5. Telephone Application, Improved Antitapping Circuit

**TCM1501B, TCM1506B, TCM1512B
TCM1531, TCM1532, TCM1536, TCM1539
TELEPHONE TONE-RINGER DRIVER**

SCTS020 – MARCH 1986 – REVISED APRIL 1987

APPLICATION INFORMATION



NC – Normally Closed

Figure 6. Alarm-System Configuration

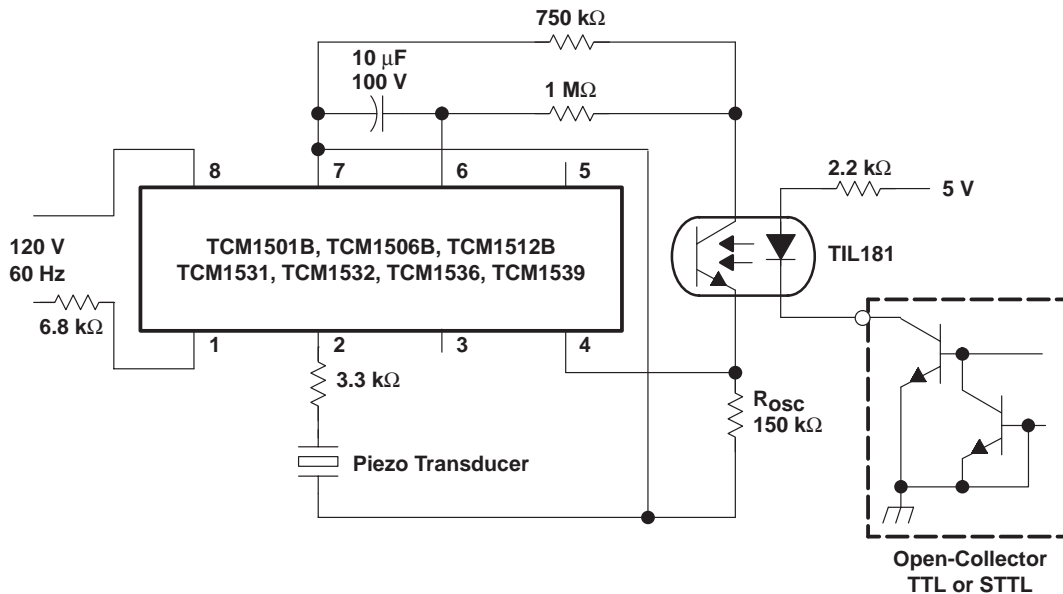


Figure 7. Nontelephone Application

APPLICATION INFORMATION

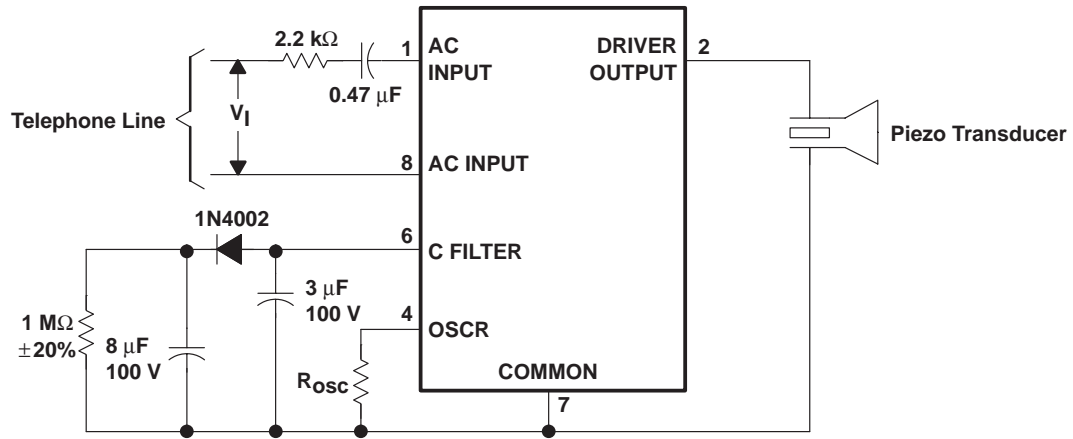


Figure 8. Telephone Application – Piezo-Drive Fast-Ring Signal Cutoff

IMPORTANT NOTICE

Texas Instruments Incorporated and its subsidiaries (TI) reserve the right to make corrections, modifications, enhancements, improvements, and other changes to its products and services at any time and to discontinue any product or service without notice. Customers should obtain the latest relevant information before placing orders and should verify that such information is current and complete. All products are sold subject to TI's terms and conditions of sale supplied at the time of order acknowledgment.

TI warrants performance of its hardware products to the specifications applicable at the time of sale in accordance with TI's standard warranty. Testing and other quality control techniques are used to the extent TI deems necessary to support this warranty. Except where mandated by government requirements, testing of all parameters of each product is not necessarily performed.

TI assumes no liability for applications assistance or customer product design. Customers are responsible for their products and applications using TI components. To minimize the risks associated with customer products and applications, customers should provide adequate design and operating safeguards.

TI does not warrant or represent that any license, either express or implied, is granted under any TI patent right, copyright, mask work right, or other TI intellectual property right relating to any combination, machine, or process in which TI products or services are used. Information published by TI regarding third-party products or services does not constitute a license from TI to use such products or services or a warranty or endorsement thereof. Use of such information may require a license from a third party under the patents or other intellectual property of the third party, or a license from TI under the patents or other intellectual property of TI.

Reproduction of TI information in TI data books or data sheets is permissible only if reproduction is without alteration and is accompanied by all associated warranties, conditions, limitations, and notices. Reproduction of this information with alteration is an unfair and deceptive business practice. TI is not responsible or liable for such altered documentation. Information of third parties may be subject to additional restrictions.

Resale of TI products or services with statements different from or beyond the parameters stated by TI for that product or service voids all express and any implied warranties for the associated TI product or service and is an unfair and deceptive business practice. TI is not responsible or liable for any such statements.

TI products are not authorized for use in safety-critical applications (such as life support) where a failure of the TI product would reasonably be expected to cause severe personal injury or death, unless officers of the parties have executed an agreement specifically governing such use. Buyers represent that they have all necessary expertise in the safety and regulatory ramifications of their applications, and acknowledge and agree that they are solely responsible for all legal, regulatory and safety-related requirements concerning their products and any use of TI products in such safety-critical applications, notwithstanding any applications-related information or support that may be provided by TI. Further, Buyers must fully indemnify TI and its representatives against any damages arising out of the use of TI products in such safety-critical applications.

TI products are neither designed nor intended for use in military/aerospace applications or environments unless the TI products are specifically designated by TI as military-grade or "enhanced plastic." Only products designated by TI as military-grade meet military specifications. Buyers acknowledge and agree that any such use of TI products which TI has not designated as military-grade is solely at the Buyer's risk, and that they are solely responsible for compliance with all legal and regulatory requirements in connection with such use.

TI products are neither designed nor intended for use in automotive applications or environments unless the specific TI products are designated by TI as compliant with ISO/TS 16949 requirements. Buyers acknowledge and agree that, if they use any non-designated products in automotive applications, TI will not be responsible for any failure to meet such requirements.

Following are URLs where you can obtain information on other Texas Instruments products and application solutions:

Products

Amplifiers	amplifier.ti.com
Data Converters	dataconverter.ti.com
DSP	dsp.ti.com
Clocks and Timers	www.ti.com/clocks
Interface	interface.ti.com
Logic	logic.ti.com
Power Mgmt	power.ti.com
Microcontrollers	microcontroller.ti.com
RFID	www.ti-rfid.com
RF/IF and ZigBee® Solutions	www.ti.com/lprf

Applications

Audio	www.ti.com/audio
Automotive	www.ti.com/automotive
Broadband	www.ti.com/broadband
Digital Control	www.ti.com/digitalcontrol
Medical	www.ti.com/medical
Military	www.ti.com/military
Optical Networking	www.ti.com/opticalnetwork
Security	www.ti.com/security
Telephony	www.ti.com/telephony
Video & Imaging	www.ti.com/video
Wireless	www.ti.com/wireless

Mailing Address: Texas Instruments, Post Office Box 655303, Dallas, Texas 75265
Copyright © 2008, Texas Instruments Incorporated