



### Features

- 10W Output Power
- Input Voltage: 18V to 36V
- Output Voltages: 1.2V to 13.2V
- 1500 VDC Isolation
- Temp Range: -40°C to +85°C
- Remote On/Off Control
- Undervoltage Lockout
- Output Current Limit
- Short-Circuit Protection
- Low-Profile Package (8mm)
- Space Saving Package
- Solderable Copper Case
- Safety Agency Approvals:  
UL 60950  
CSA 22.2 60950

### Description

The PT4240 power modules are a series of DC/DC converters housed in an ultra-low profile (8mm) solderable copper case. The series includes a number of preset output voltages ranging from 1.3V<sup>†</sup> up to 12V, all fully approved for Telecom use. They may also be used in many other applications that require input-output isolation over an extended temperature range. The modules are an ideal choice for low-power digital and analog circuits, including DSPs and microcontrollers. The flexibility of input-output isolation also allows the output to be configured for negative voltage operation.

The PT4240 series is made available in both horizontal and vertical pin configurations, including surface mount.

### Ordering Information

|          |                 |        |
|----------|-----------------|--------|
| PT4241   | □ = 1.8V/3A     | (5.4W) |
| PT4242   | □ = 3.3V/3A     |        |
| PT4243   | □ = 5.0V/2A     |        |
| PT4244   | □ = 12.0V/0.85A |        |
| PT4245   | □ = 2.5V/3A     | (7.5W) |
| PT4246   | □ = 1.5V/3A     | (4.5W) |
| † PT4247 | □ = 1.3V/3A     | (3.9W) |

† Adjustable to 1.2V

### PT Series Suffix (PT1234 x)

| Case/Pin Configuration | Order Suffix | Package Code |
|------------------------|--------------|--------------|
| Vertical               | <b>N</b>     | (EPE)        |
| Horizontal             | <b>A</b>     | (EPF)        |
| SMD                    | <b>C</b>     | (EPG)        |

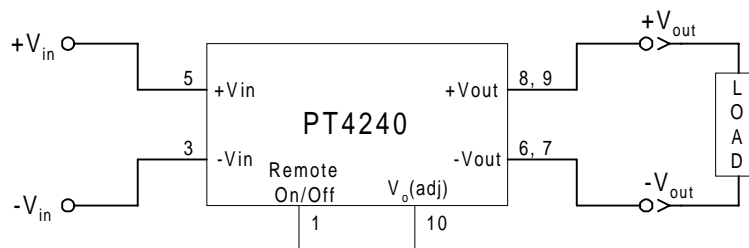
(Reference the applicable package code drawing for the dimensions and PC board layout)

### Pin-Out Information

| Pin | Function               |
|-----|------------------------|
| 1   | Remote On/Off *        |
| 2   | Do not connect         |
| 3   | -V <sub>in</sub>       |
| 4   | Do not connect         |
| 5   | +V <sub>in</sub>       |
| 6   | -V <sub>out</sub>      |
| 7   | -V <sub>out</sub>      |
| 8   | +V <sub>out</sub>      |
| 9   | +V <sub>out</sub>      |
| 10  | V <sub>out</sub> Adj * |

\* For further information, see application notes.

### Standard Application



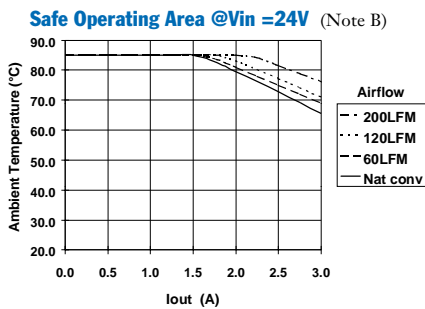
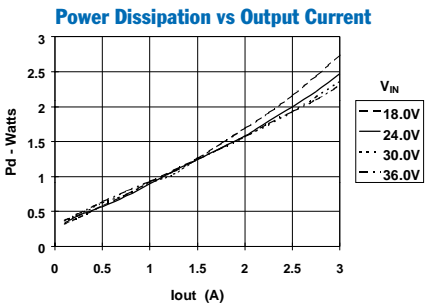
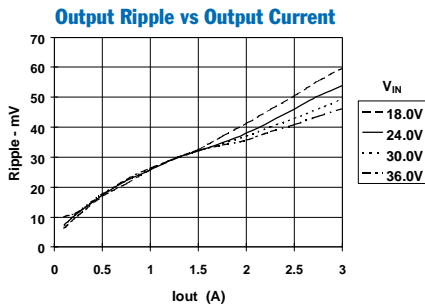
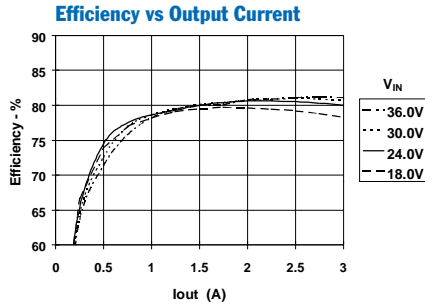
10-W Low-Profile 24V-Input  
Isolated DC/DC Converter**Specifications** (Unless otherwise stated,  $T_a = 25^\circ\text{C}$ ,  $V_{in} = 24\text{V}$ ,  $C_{in} = 0\mu\text{F}$ ,  $C_{out} = 0\mu\text{F}$ , and  $I_o = I_{o,max}$ )

| Characteristic                 | Symbol              | Conditions   | PT4240 SERIES  |                                 |  | Units                           |                  |
|--------------------------------|---------------------|--|--|---------------------------------|--|---------------------------------|------------------|
|                                |                     |  | Min  | Typ                             | Max                                    |                                 |                  |
| Output Current                 | $I_o$               | Over $V_{in}$ range  | $V_o \leq 3.3\text{V}$<br>$V_o = 5.0\text{V}$<br>$V_o = 12\text{V}$  | 0.1 (1)<br>0.1 (1)<br>0.1 (1)   | —<br>—<br>—                            | 3<br>2<br>0.85                  |                  |
| Input Voltage Range            | $V_{in}$            | Over $I_o$ Range   |  | 18.0                            | 24.0                                   | 36.0                            | VDC              |
| Set Point Voltage Tolerance    | $V_o$ tol           |  |  | —                               | $\pm 1$                                | $\pm 2$                         | % $V_o$          |
| Temperature Variation          | $\text{Reg}_{temp}$ | $-40^\circ \leq T_a \leq +85^\circ\text{C}$ , $I_o = I_{o,min}$                |  | —                               | $\pm 0.2$                              | —                               | % $V_o$          |
| Line Regulation                | $\text{Reg}_{line}$ | Over $V_{in}$ range  |  | —                               | $\pm 1$                                | —                               | mV               |
| Load Regulation                | $\text{Reg}_{load}$ | Over $I_o$ range   |  | —                               | $\pm 5$                                | —                               | mV               |
| Total Output Voltage Variation | $\Delta V_o$ tot    | Includes set-point, line, load,<br>$-40^\circ \leq T_a \leq +85^\circ\text{C}$ |  | —                               | $\pm 1.5$                              | $\pm 3$                         | % $V_o$          |
| Efficiency                     | $\eta$              |  | $V_o = 12\text{V}$<br>$V_o = 5.0\text{V}$<br>$V_o = 3.3\text{V}$<br>$V_o = 2.5\text{V}$<br>$V_o = 1.8\text{V}$<br>$V_o = 1.5\text{V}$<br>$V_o = 1.3\text{V}$ | —<br>—<br>—<br>—<br>—<br>—<br>— | 86<br>84<br>80<br>77<br>72<br>70<br>64 | —<br>—<br>—<br>—<br>—<br>—<br>— | %                |
| $V_o$ Ripple (pk-pk)           | $V_r$               | 20MHz bandwidth  | $V_o \leq 5.0\text{V}$<br>$V_o = 12\text{V}$   | —<br>—                          | 50<br>100                              | —<br>—                          | mV <sub>pp</sub> |
| Transient Response             | $t_{tr}$            | 1A/ $\mu\text{s}$ load step, 50% to 100% $I_{o,max}$                           |  | —                               | 75                                     | —                               | $\mu\text{s}$    |
|                                | $\Delta V_{tr}$     | $V_o$ over/undershoot  | $V_o \leq 5.0\text{V}$<br>$V_o = 12\text{V}$   | —<br>—                          | $\pm 150$<br>$\pm 350$                 | —<br>—                          | mV               |
| Output Voltage Adjust          | $V_{adj}$           |  | $V_o \geq 2.5\text{V}$   | $\pm 10$                        | —                                      | —                               | % $V_o$          |
| Current Limit Threshold        | $I_{lim}$           | $V_{in} = 18\text{V}$ , $\Delta V_o = -1\%$                                    |  | —                               | 150                                    | —                               | % $I_{o,max}$    |
| Switching Frequency            | $f_s$               | Over $V_{in}$ range  |  | 250                             | 300                                    | 350                             | kHz              |
| Under-Voltage Lockout          | UVLO                |  |  | —                               | 16                                     | —                               | V                |
| Remote On/Off (Pin 1)          |                     | Referenced to $-V_{in}$ (pin 3)  |  |                                 |  |                                 |                  |
| Input High Voltage             | $V_{IH}$            |  |  | 4.5                             | —                                      | Open (3)                        | V                |
| Input Low Voltage              | $V_{IL}$            |  |  | -0.2                            | —                                      | +0.8                            | V                |
| Input Low Current              | $I_{IL}$            |  |  | —                               | -0.5                                   | —                               | mA               |
| Standby Input Current          | $I_{in, standby}$   | pins 1 & 3 connected   |  | —                               | 1                                      | —                               | mA               |
| Internal Input Capacitance     | $C_{in}$            |  |  | —                               | 0.66                                   | —                               | $\mu\text{F}$    |
| External Output Capacitance    | $C_{out}$           |  | $V_o \leq 5.0\text{V}$<br>$V_o = 12\text{V}$   | 0 (5)<br>0 (5)                  | —<br>—                                 | 1000<br>330                     | $\mu\text{F}$    |
| Isolation Voltage              |                     | Input-output/input-case  |  | 1500                            | —                                      | —                               | V                |
| Capacitance                    |                     | Input to output  |  | —                               | 1,100                                  | —                               | pF               |
| Resistance                     |                     | Input to output  |  | 10                              | —                                      | —                               | M $\Omega$       |
| Operating Temperature Range    | $T_a$               | Over $V_{in}$ range  |  | -40                             | —                                      | +85 (4)                         | $^\circ\text{C}$ |
| Storage Temperature            | $T_s$               | —  |  | -40                             | —                                      | +125                            | $^\circ\text{C}$ |
| Reliability                    | MTBF                | Per Bellcore TR-332<br>50% stress, $T_a = 40^\circ\text{C}$ , ground benign    |  | 4.7                             | —                                      | —                               | $10^6$ Hrs       |
| Mechanical Shock               | —                   | Per Mil-Std-883D, method 2002.3,<br>1mS, half-sine, mounted to a fixture       |  | —                               | 500                                    | —                               | G's              |
| Mechanical Vibration           | —                   | Mil-Std-883D, Method 2007.2<br>20-2000Hz, all case styles soldered to PC       |  | —                               | 20 (6)                                 | —                               | G's              |
| Weight                         | —                   | —  |  | —                               | 20                                     | —                               | grams            |
| Flammability                   | —                   | Materials meet UL 94V-0  |  | —                               | —                                      | —                               |                  |

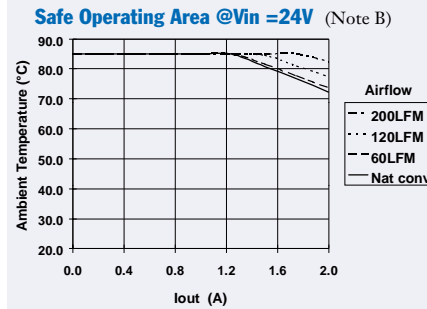
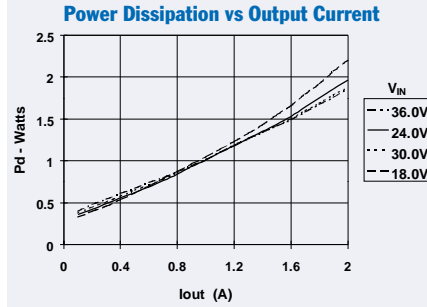
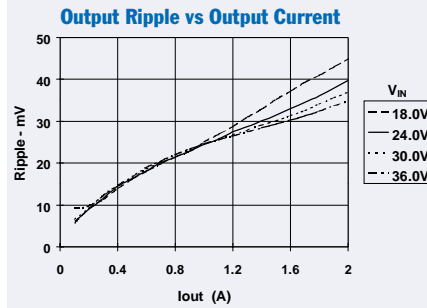
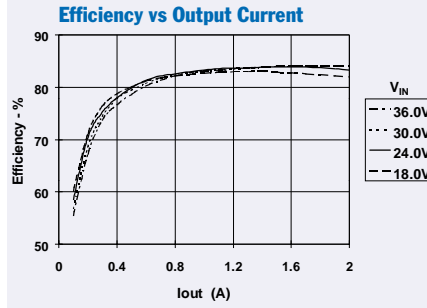
- Notes:**
- (1) The DC/DC converter will operate at no load with reduced specifications.
  - (2) The maximum output current reduces the output power of the following devices to less than 10W:-  
PT4245 = 7.5W; PT4241 = 5.4W; PT4246 = 4.5W; PT4247 = 3.9W.
  - (3) The Remote On/Off (pin 1) has an internal pull-up, and if it is left open circuit the converter will operate when input power is applied. The open-circuit voltage is typically 5V. Refer to the application notes for interface considerations.
  - (4) See Safe Operating Area curves or contact the factory for the appropriate derating.
  - (5) An output capacitor is not required for proper operation.
  - (6) The case pins on through-hole pin configurations (N & A) must be soldered. For more information see the applicable package outline drawing.

10-W Low-Profile 24V-Input Isolated DC/DC Converter

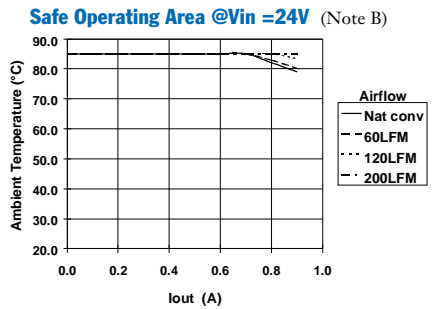
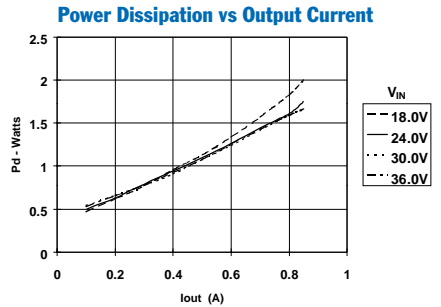
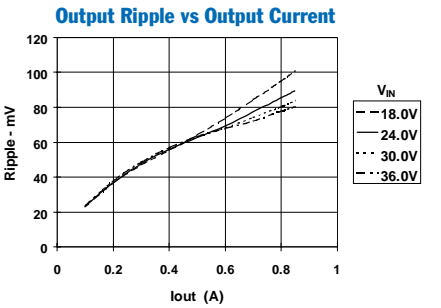
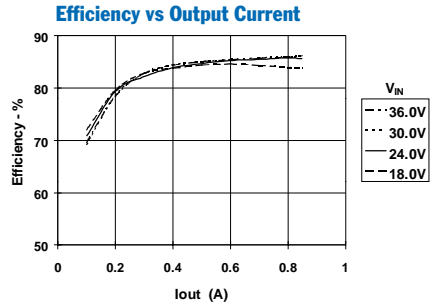
PT4242,  $V_o = 3.3\text{VDC}$  (See Note A)



PT4243,  $V_o = 5.0\text{VDC}$  (See Note A)



PT4244,  $V_o = 12.0\text{VDC}$  (See Note A)



**Note A:** All Characteristic data in the above graphs has been developed from actual products tested at 25°C. This data is considered typical data for the converter.  
**Note B:** SOA curves represent operating conditions at which internal components are at or below manufacturer's maximum rated operating temperatures.

### Using the Remote On/Off with the PT4220/4240 Isolated 10W Excalibur™ DC/DC Converters

For applications requiring output voltage On/Off control, the PT4220/4240 DC/DC converter series incorporates a “Remote On/Off” control (pin 1). This feature can be used to switch the module off without removing the applied input source voltage.

The converter functions normally with Pin 1 open-circuit, providing a regulated output voltage when a valid source voltage is applied to +V<sub>in</sub> (pin 5), with respect to -V<sub>in</sub> (pin 3). When a low-level<sup>1</sup> ground signal is applied to pin 1, the converter output will be turned off.

Figure 1 shows an application schematic, which details the typical use of the Remote On/Off function. Note the discrete transistor (Q1). The pin has its own internal pull-up, allowing it to be controlled with an open-collector or open-drain device (See notes 2 & 3). Table 1 gives the threshold requirements.

When placed in the “Off” state, the standby current drawn from the input source is typically reduced to less than 1mA.

Table 1; Pin 1 Remote On/Off Control Parameters<sup>1</sup>

| Parameter                                    | Min  | Typ  | Max    |
|--|------|------|--------|
| Enable (V <sub>IH</sub> )                    | 4.5V | —    | —      |
| Disable (V <sub>IL</sub> )                   | —    | —    | 0.8V   |
| V <sub>O/c</sub> [Open-Circuit]              | —    | 5.0V | —      |
| I <sub>in</sub> [pin 1 at -V <sub>in</sub> ] | —    | —    | -0.5mA |

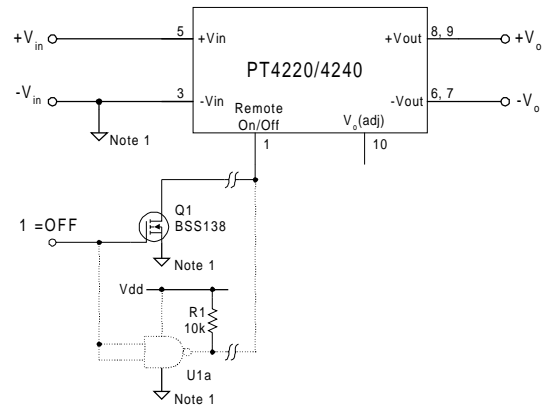
**Notes:**

1. The Remote On/Off control uses -V<sub>in</sub> (pin 3) as its ground reference. All voltages specified are with respect to -V<sub>in</sub>.
2. Use an open-collector device (preferably a discrete transistor) for the Remote On/Off input. A pull-up resistor is not necessary. To disable the output voltage, the control pin should be pulled low to less than +0.8VDC.
3. The Remote On/Off pin may be controlled with devices that have a totem-pole output. This is provided the drive voltage meets the threshold requirements in Table 1. Do not apply more than +20V. If a TTL gate is used, a pull-up resistor may be required to the logic supply voltage.
4. The PT4220/4240 converters incorporate an “Under-Voltage Lockout” (UVLO). The UVLO will keep the module off when the input voltage to the converter is low, regardless of the state of the Remote On/Off control. Table 2 gives the UVLO input voltage thresholds.

Table 2; UVLO Thresholds<sup>4</sup>

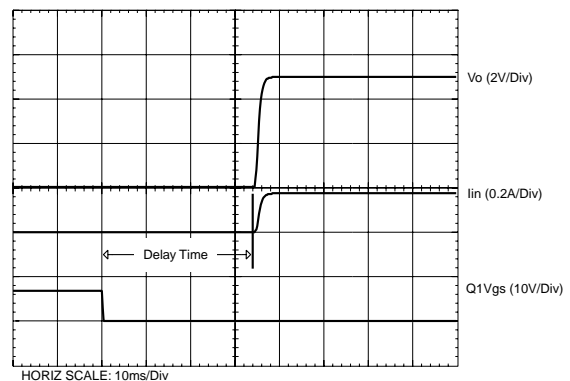
| Series | V <sub>in</sub> Range | UVLO Threshold |
|--------|-----------------------|----------------|
| PT4220 | 36 – 75V              | 32V ±2V        |
| PT4240 | 18 – 36V              | 15.8V ±2V      |

Figure 1



**Turn-On Time:** In the circuit of Figure 1, turning Q<sub>1</sub> on applies a low-voltage to pin 1 and disables the converter output. Correspondingly, turning Q<sub>1</sub> off allows pin 1 to be pulled high by an internal pull-up resistor. The converter produces a regulated output voltage within 60ms. Figure 2 shows the output response of a PT4223 (5.0V) following the turn-off of Q<sub>1</sub>. The turn off of Q<sub>1</sub> corresponds to the drop in Q<sub>1</sub> V<sub>gs</sub>. Although the rise-time of the output voltage is short (<5ms), the indicated delay time will vary depending upon the input voltage and the module’s internal timing. The waveform was measured with a 48Vdc input voltage, and a 1.4A resistive load.

Figure 2



### Adjusting the Output Voltage of the 10W-Rated Excalibur™ Series of Isolated DC/DC Converters

The factory pre-set output voltage of Power Trends' 10W Excalibur series of isolated DC-DC converters may be adjusted over a narrow range. This is accomplished with the addition of a single external resistor. For the input voltage range specified in the data sheet, Table 1 gives the allowable adjustment range for each model as  $V_o$  (min) and  $V_o$  (max).

**Adjust Up:** An increase in the output voltage is obtained by adding a resistor,  $R_2$  between pin 10 ( $V_o$  adjust), and pins 6 & 7 ( $-V_{out}$ ).

**Adjust Down:** Add a resistor ( $R_1$ ), between pin 10 ( $V_o$  adjust) and pins 8 & 9 ( $+V_{out}$ ).

Refer to Figure 1 and Table 2 for both the placement and value of the required resistor, ( $R_1$ ) or  $R_2$ .

The values of ( $R_1$ ) [adjust down], and  $R_2$  [adjust up], can also be calculated using the following formulas.

$$(R_1) = \frac{56.2 (V_a - 1.225)}{V_o - V_a} - R_s \quad \text{k}\Omega$$

$$R_2 = \frac{68.845}{V_a - V_o} - R_s \quad \text{k}\Omega$$

Where,  $V_o$  = Original output voltage  
 $V_a$  = Adjusted output voltage  
 $R_s$  = Internal resistance (Table 1)

**Notes:**

1. Use only a single 1% resistor in either the ( $R_1$ ) or  $R_2$  location. Place the resistor as close to the ISR as possible.
2. Never connect capacitors to  $V_o$  adjust. Any capacitance added to the  $V_o$  adjust control pin will affect the stability of the ISR.
3. The output power is limited to 10W. If the output voltage is increased, the maximum load current must be derated according to the following equation.

$$I_o(\text{max}) = \frac{10}{V_a}$$

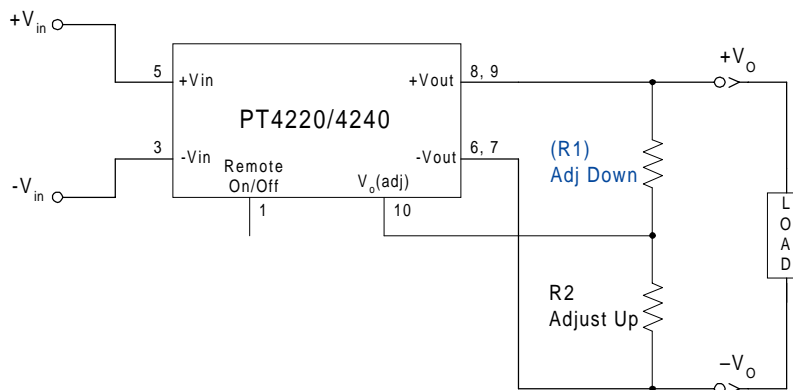
In any instance, the load current must not exceed the converter's rated current (See Table 1).

**Table 1**

**DC/DC CONVERTER ADJUSTMENT RANGE AND FORMULA PARAMETERS**

| Series Pt #                | PT4247 | PT4246 | PT4241 | PT4245 | PT4242 | PT4243 | PT4244 |
|----------------------------|--------|--------|--------|--------|--------|--------|--------|
| 24V Bus                    | PT4247 | PT4246 | PT4241 | PT4245 | PT4242 | PT4243 | PT4244 |
| 48V Bus                    | PT4227 | PT4226 | PT4221 | PT4225 | PT4222 | PT4223 | PT4224 |
| Rated Current <sup>3</sup> | 3A     | 3A     | 3A     | 3A     | 3A     | 2A     | 0.85A  |
| $V_o$ (nom)                | 1.3V   | 1.5V   | 1.8V   | 2.5V   | 3.3V   | 5.0V   | 12.0V  |
| $V_o$ (min)                | 1.2V   | 1.45V  | 1.7V   | 2.25V  | 2.95V  | 4.5V   | 10.8V  |
| $V_o$ (max)                | 1.4V   | 1.65V  | 1.98V  | 2.75V  | 3.65V  | 5.5V   | 13.2V  |
| $R_s$ (k $\Omega$ )        | 340.0  | 243.0  | 243.0  | 187.0  | 187.0  | 110.0  | 49.9   |

**Figure 1**



PT4220/4240 Series

Table 2

DC/DC CONVERTER ADJUSTMENT RESISTOR VALUES

| Series Pt #                 | PT4247    | PT4246   | PT4241    | PT4245     | PT4242     | PT4243 | PT4244     |
|-----------------------------|-----------|----------|-----------|------------|------------|--------|------------|
| 24V Bus                     | PT4227    | PT4226   | PT4221    | PT4225     | PT4222     | PT4223 | PT4224     |
| <b>V<sub>o</sub>(nom)</b>   | 1.3V      | 1.5V     | 1.8V      | 2.5V       | 3.3V       | 5.0V   | 12.0V      |
| <b>V<sub>a</sub>(req'd)</b> |           |          |           |            |            |        |            |
| 1.2                         | (0.0)kΩ   |          |           |            |            | 4.5    | (258.0)kΩ  |
| 1.25                        | (340.0)kΩ |          |           |            |            | 4.6    | (364.0)kΩ  |
| 1.3                         |           |          |           |            |            | 4.7    | (541.0)kΩ  |
| 1.35                        | 340.0kΩ   |          |           |            |            | 4.8    | (895.0)kΩ  |
| 1.4                         | 0.0.0kΩ   |          |           |            |            | 4.9    | (1960.0)kΩ |
| 1.45                        |           | (9.9)kΩ  |           |            |            | 5.0    |            |
| 1.5                         |           |          |           |            |            | 5.1    | 578.0kΩ    |
| 1.55                        |           | 1130.0kΩ |           |            |            | 5.2    | 234.0kΩ    |
| 1.6                         |           | 445.0kΩ  |           |            |            | 5.3    | 119.0kΩ    |
| 1.65                        |           | 216.0kΩ  |           |            |            | 5.4    | 62.1kΩ     |
| 1.7                         |           |          | (23.9)kΩ  |            |            | 5.5    | 27.7kΩ     |
| 1.75                        |           |          | (347.0)kΩ |            |            | 10.8   | (399.0)kΩ  |
| 1.8                         |           |          |           |            |            | 11.0   | (499.0)kΩ  |
| 1.85                        |           |          | 1130.0kΩ  |            |            | 11.5   | (1110.0)kΩ |
| 1.9                         |           |          | 445.0kΩ   |            |            | 12.0   |            |
| 1.95                        |           |          | 216.0kΩ   |            |            | 12.5   | 87.8kΩ     |
| 2.25                        |           |          |           | (43.4)kΩ   |            | 13.0   | 18.9kΩ     |
| 2.3                         |           |          |           | (115.0)kΩ  |            | 13.2   | 7.5kΩ      |
| 2.35                        |           |          |           | (235.0)kΩ  |            |        |            |
| 2.4                         |           |          |           | (473.0)kΩ  |            |        |            |
| 2.45                        |           |          |           | (1190.0)kΩ |            |        |            |
| 2.5                         |           |          |           |            |            |        |            |
| 2.55                        |           |          |           | 1190.0kΩ   |            |        |            |
| 2.6                         |           |          |           | 501.0kΩ    |            |        |            |
| 2.65                        |           |          |           | 272.0kΩ    |            |        |            |
| 2.7                         |           |          |           | 157.0kΩ    |            |        |            |
| 2.75                        |           |          |           | 88.4kΩ     |            |        |            |
| 2.95                        |           |          |           |            | (90.0)kΩ   |        |            |
| 3.0                         |           |          |           |            | (146.0)kΩ  |        |            |
| 3.05                        |           |          |           |            | (223.0)kΩ  |        |            |
| 3.1                         |           |          |           |            | (340.0)kΩ  |        |            |
| 3.15                        |           |          |           |            | (534.0)kΩ  |        |            |
| 3.2                         |           |          |           |            | (923.0)kΩ  |        |            |
| 3.25                        |           |          |           |            | (2090.0)kΩ |        |            |
| 3.3                         |           |          |           |            |            |        |            |
| 3.35                        |           |          |           |            | 1190.0kΩ   |        |            |
| 3.4                         |           |          |           |            | 501.0kΩ    |        |            |
| 3.45                        |           |          |           |            | 272.0kΩ    |        |            |
| 3.5                         |           |          |           |            | 157.0kΩ    |        |            |
| 3.55                        |           |          |           |            | 88.4kΩ     |        |            |
| 3.6                         |           |          |           |            | 42.5kΩ     |        |            |
| 3.65                        |           |          |           |            | 9.7kΩ      |        |            |

R<sub>1</sub> = (Blue)      R<sub>2</sub> = Black

**PACKAGING INFORMATION**

| Orderable Device | Status<br>(1) | Package Type | Package Drawing | Pins | Package Qty | Eco Plan<br>(2) | Lead/Ball Finish | MSL Peak Temp<br>(3) | Samples<br>(Requires Login) |
|------------------|---------------|--------------|-----------------|------|-------------|-----------------|------------------|----------------------|-----------------------------|
| PT4242A          | LIFEBUY       | SIP MODULE   | EPF             | 10   | 15          | TBD             | Call TI          | Level-1-215C-UNLIM   |                             |
| PT4242C          | LIFEBUY       | SIP MODULE   | EPG             | 10   | 15          | TBD             | Call TI          | Level-3-215C-168HRS  |                             |
| PT4243A          | LIFEBUY       | SIP MODULE   | EPF             | 10   | 15          | TBD             | Call TI          | Level-1-215C-UNLIM   |                             |
| PT4243C          | LIFEBUY       | SIP MODULE   | EPG             | 10   | 15          | TBD             | Call TI          | Level-3-215C-168HRS  |                             |
| PT4243N          | LIFEBUY       | SIP MODULE   | EPE             | 10   | 15          | TBD             | Call TI          | Level-1-215C-UNLIM   |                             |
| PT4244A          | LIFEBUY       | SIP MODULE   | EPF             | 10   | 15          | TBD             | Call TI          | Level-1-215C-UNLIM   |                             |
| PT4244C          | LIFEBUY       | SIP MODULE   | EPG             | 10   | 15          | TBD             | Call TI          | Level-3-215C-168HRS  |                             |
| PT4244N          | LIFEBUY       | SIP MODULE   | EPE             | 10   | 15          | TBD             | Call TI          | Level-1-215C-UNLIM   |                             |
| PT4247A          | OBSOLETE      | SIP MODULE   | EPF             | 10   |             | TBD             | Call TI          | Call TI              |                             |

(1) The marketing status values are defined as follows:

**ACTIVE:** Product device recommended for new designs.

**LIFEBUY:** TI has announced that the device will be discontinued, and a lifetime-buy period is in effect.

**NRND:** Not recommended for new designs. Device is in production to support existing customers, but TI does not recommend using this part in a new design.

**PREVIEW:** Device has been announced but is not in production. Samples may or may not be available.

**OBSOLETE:** TI has discontinued the production of the device.

(2) Eco Plan - The planned eco-friendly classification: Pb-Free (RoHS), Pb-Free (RoHS Exempt), or Green (RoHS & no Sb/Br) - please check <http://www.ti.com/productcontent> for the latest availability information and additional product content details.

**TBD:** The Pb-Free/Green conversion plan has not been defined.

**Pb-Free (RoHS):** TI's terms "Lead-Free" or "Pb-Free" mean semiconductor products that are compatible with the current RoHS requirements for all 6 substances, including the requirement that lead not exceed 0.1% by weight in homogeneous materials. Where designed to be soldered at high temperatures, TI Pb-Free products are suitable for use in specified lead-free processes.

**Pb-Free (RoHS Exempt):** This component has a RoHS exemption for either 1) lead-based flip-chip solder bumps used between the die and package, or 2) lead-based die adhesive used between the die and leadframe. The component is otherwise considered Pb-Free (RoHS compatible) as defined above.

**Green (RoHS & no Sb/Br):** TI defines "Green" to mean Pb-Free (RoHS compatible), and free of Bromine (Br) and Antimony (Sb) based flame retardants (Br or Sb do not exceed 0.1% by weight in homogeneous material)

(3) MSL, Peak Temp. -- The Moisture Sensitivity Level rating according to the JEDEC industry standard classifications, and peak solder temperature.

**Important Information and Disclaimer:** The information provided on this page represents TI's knowledge and belief as of the date that it is provided. TI bases its knowledge and belief on information provided by third parties, and makes no representation or warranty as to the accuracy of such information. Efforts are underway to better integrate information from third parties. TI has taken and continues to take reasonable steps to provide representative and accurate information but may not have conducted destructive testing or chemical analysis on incoming materials and chemicals. TI and TI suppliers consider certain information to be proprietary, and thus CAS numbers and other limited information may not be available for release.

In no event shall TI's liability arising out of such information exceed the total purchase price of the TI part(s) at issue in this document sold by TI to Customer on an annual basis.





## IMPORTANT NOTICE

Texas Instruments Incorporated and its subsidiaries (TI) reserve the right to make corrections, enhancements, improvements and other changes to its semiconductor products and services per JESD46, latest issue, and to discontinue any product or service per JESD48, latest issue. Buyers should obtain the latest relevant information before placing orders and should verify that such information is current and complete. All semiconductor products (also referred to herein as "components") are sold subject to TI's terms and conditions of sale supplied at the time of order acknowledgment.

TI warrants performance of its components to the specifications applicable at the time of sale, in accordance with the warranty in TI's terms and conditions of sale of semiconductor products. Testing and other quality control techniques are used to the extent TI deems necessary to support this warranty. Except where mandated by applicable law, testing of all parameters of each component is not necessarily performed.

TI assumes no liability for applications assistance or the design of Buyers' products. Buyers are responsible for their products and applications using TI components. To minimize the risks associated with Buyers' products and applications, Buyers should provide adequate design and operating safeguards.

TI does not warrant or represent that any license, either express or implied, is granted under any patent right, copyright, mask work right, or other intellectual property right relating to any combination, machine, or process in which TI components or services are used. Information published by TI regarding third-party products or services does not constitute a license to use such products or services or a warranty or endorsement thereof. Use of such information may require a license from a third party under the patents or other intellectual property of the third party, or a license from TI under the patents or other intellectual property of TI.

Reproduction of significant portions of TI information in TI data books or data sheets is permissible only if reproduction is without alteration and is accompanied by all associated warranties, conditions, limitations, and notices. TI is not responsible or liable for such altered documentation. Information of third parties may be subject to additional restrictions.

Resale of TI components or services with statements different from or beyond the parameters stated by TI for that component or service voids all express and any implied warranties for the associated TI component or service and is an unfair and deceptive business practice. TI is not responsible or liable for any such statements.

Buyer acknowledges and agrees that it is solely responsible for compliance with all legal, regulatory and safety-related requirements concerning its products, and any use of TI components in its applications, notwithstanding any applications-related information or support that may be provided by TI. Buyer represents and agrees that it has all the necessary expertise to create and implement safeguards which anticipate dangerous consequences of failures, monitor failures and their consequences, lessen the likelihood of failures that might cause harm and take appropriate remedial actions. Buyer will fully indemnify TI and its representatives against any damages arising out of the use of any TI components in safety-critical applications.

In some cases, TI components may be promoted specifically to facilitate safety-related applications. With such components, TI's goal is to help enable customers to design and create their own end-product solutions that meet applicable functional safety standards and requirements. Nonetheless, such components are subject to these terms.

No TI components are authorized for use in FDA Class III (or similar life-critical medical equipment) unless authorized officers of the parties have executed a special agreement specifically governing such use.

Only those TI components which TI has specifically designated as military grade or "enhanced plastic" are designed and intended for use in military/aerospace applications or environments. Buyer acknowledges and agrees that any military or aerospace use of TI components which have **not** been so designated is solely at the Buyer's risk, and that Buyer is solely responsible for compliance with all legal and regulatory requirements in connection with such use.

TI has specifically designated certain components as meeting ISO/TS16949 requirements, mainly for automotive use. In any case of use of non-designated products, TI will not be responsible for any failure to meet ISO/TS16949.

### Products

|                              |  |
|------------------------------|--|
| Audio                        | <a href="http://www.ti.com/audio">www.ti.com/audio</a>                               |
| Amplifiers                   | <a href="http://amplifier.ti.com">amplifier.ti.com</a>                               |
| Data Converters              | <a href="http://dataconverter.ti.com">dataconverter.ti.com</a>                       |
| DLP® Products                | <a href="http://www.dlp.com">www.dlp.com</a>   |
| DSP                          | <a href="http://dsp.ti.com">dsp.ti.com</a>   |
| Clocks and Timers            | <a href="http://www.ti.com/clocks">www.ti.com/clocks</a>                             |
| Interface                    | <a href="http://interface.ti.com">interface.ti.com</a>                               |
| Logic                        | <a href="http://logic.ti.com">logic.ti.com</a>                                       |
| Power Mgmt                   | <a href="http://power.ti.com">power.ti.com</a>                                       |
| Microcontrollers             | <a href="http://microcontroller.ti.com">microcontroller.ti.com</a>                   |
| RFID                         | <a href="http://www.ti-rfid.com">www.ti-rfid.com</a>                                 |
| OMAP Applications Processors | <a href="http://www.ti.com/omap">www.ti.com/omap</a>                                 |
| Wireless Connectivity        | <a href="http://www.ti.com/wirelessconnectivity">www.ti.com/wirelessconnectivity</a> |

### Applications

|                               |  |
|-------------------------------|--|
| Automotive and Transportation | <a href="http://www.ti.com/automotive">www.ti.com/automotive</a>                         |
| Communications and Telecom    | <a href="http://www.ti.com/communications">www.ti.com/communications</a>                 |
| Computers and Peripherals     | <a href="http://www.ti.com/computers">www.ti.com/computers</a>                           |
| Consumer Electronics          | <a href="http://www.ti.com/consumer-apps">www.ti.com/consumer-apps</a>                   |
| Energy and Lighting           | <a href="http://www.ti.com/energy">www.ti.com/energy</a>                                 |
| Industrial                    | <a href="http://www.ti.com/industrial">www.ti.com/industrial</a>                         |
| Medical                       | <a href="http://www.ti.com/medical">www.ti.com/medical</a>                               |
| Security                      | <a href="http://www.ti.com/security">www.ti.com/security</a>                             |
| Space, Avionics and Defense   | <a href="http://www.ti.com/space-avionics-defense">www.ti.com/space-avionics-defense</a> |
| Video and Imaging             | <a href="http://www.ti.com/video">www.ti.com/video</a>                                   |

### TI E2E Community

[e2e.ti.com](http://e2e.ti.com)