

## LM48556 Boomer™ Fully Differential, Mono, Ceramic Speaker Driver

Check for Samples: [LM48556](#)

### FEATURES

- Fully Differential Amplifier
- Externally Configurable Gain
- Integrated Charge Pump
- Low Power Shutdown Mode
- Soft Start Function

### APPLICATIONS

- Mobile Phones
- PDA's
- Digital Cameras

### KEY SPECIFICATIONS

- Output Voltage Swing
  - $V_{DD} = 3.6V$ , 1kHz 14.2V<sub>PP</sub> (typ)
  - $V_{DD} = 4.5V$ , 1kHz 17.5V<sub>PP</sub> (typ)
- Power Supply Rejection Ratio
  - $f = 217Hz$ ,  $V_{DD} = 3.6V$  80dB (typ)
- $I_{DD}$  at  $V_{DD} = 3.6V$  4.8mA (typ)
- Wake-Up Time 0.5ms (typ)

### DESCRIPTION

The LM48556 is a single supply, mono, ceramic speaker driver with an integrated charge-pump, designed for portable devices, such as cell phones, where board space is at a premium. The LM48556 charge pump allows the device to deliver 17.5V<sub>PP</sub> (typ) from a single 4.5V supply. Additionally, the charge pump features a soft start function that minimizes transient current during power-up.

The LM48556 features high power supply rejection ratio (PSRR) of 80dB at 217Hz, allowing the device to operate in noisy environments without additional power supply conditioning. Flexible power supply requirements allow operation from 2.7V to 5.0V. Additionally, the LM48556 features a differential input function and an externally configurable gain. A low power shutdown mode reduces supply current consumption to 0.1μA.

Superior click and pop suppression eliminates audible transients on power-up/down and during shutdown. The LM48556 is available in an ultra-small 12-bump DSBGA package (2mm x 1.5mm).

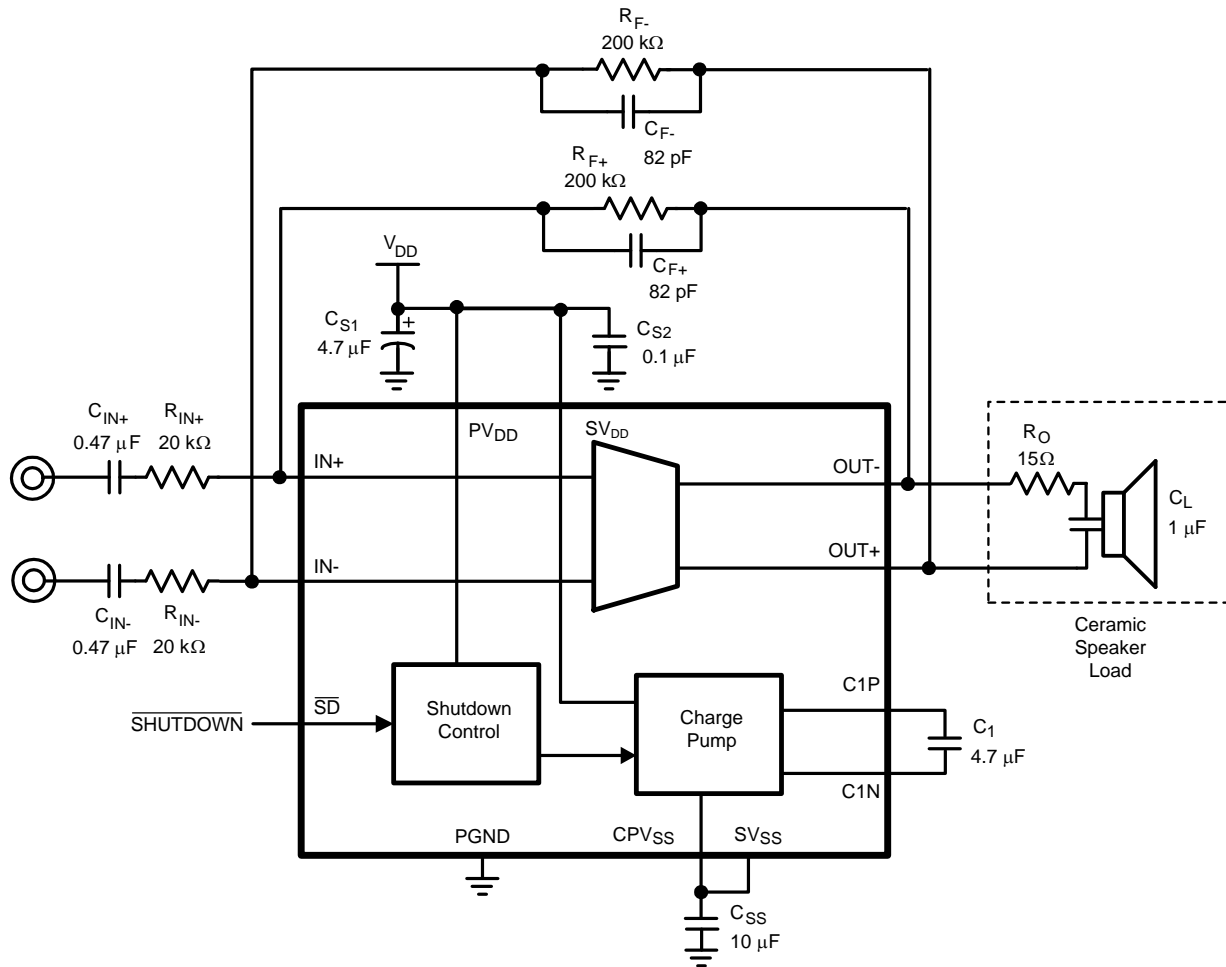


Please be aware that an important notice concerning availability, standard warranty, and use in critical applications of Texas Instruments semiconductor products and disclaimers thereto appears at the end of this data sheet.

Boomer is a trademark of Texas Instruments.

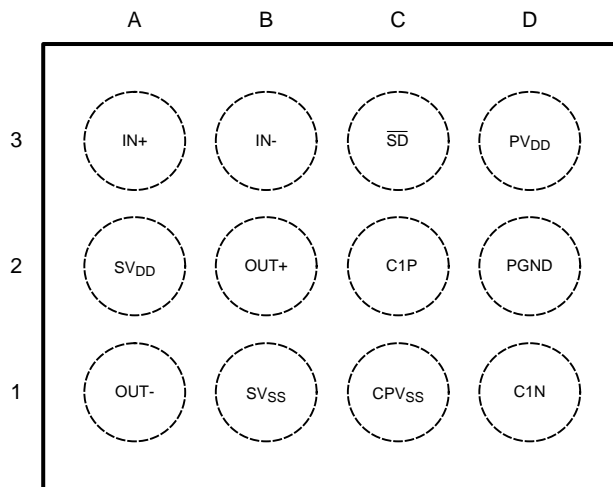
All other trademarks are the property of their respective owners.

**TYPICAL APPLICATION**

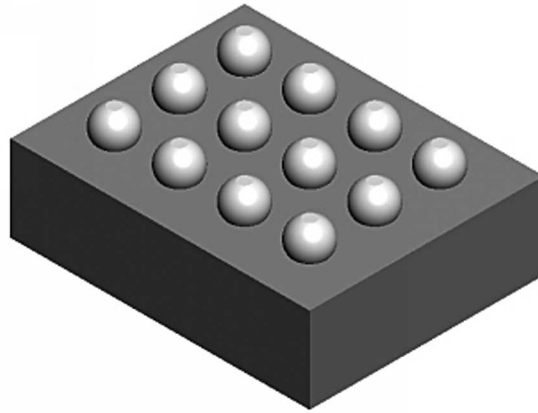


**Figure 1. Typical Audio Amplifier Application Circuit**

**Connection Diagram**



**Figure 2. 12 Bump DSBGA - Top View  
See Package Number YZR00121AA**


**Figure 3. 12 Bump DSBGA - Package View**
**BUMP DESCRIPTIONS**

Bump	Name	Description
A1	OUT-	Amplifier Inverting Output
A2	SV <sub>DD</sub>	Signal Power Supply - Positive
A3	IN+	Amplifier Non-inverting Input
B1	SV <sub>SS</sub>	Signal Power Supply - Negative
B2	OUT+	Amplifier Non-inverting Output
B3	IN-	Amplifier Inverting Input
C1	CPV <sub>SS</sub>	Charge Pump Output Voltage
C2	C1P	Charge Pump Flying Capacitor Positive Terminal
C3	$\overline{SD}$	Active Low Reset Input. Connect to V <sub>DD</sub> for normal operation. Drive $\overline{SD}$ low to disable.
D1	C1N	Charge Pump Flying Capacitor Negative Terminal
D2	PGND	Power Ground
D3	PV <sub>DD</sub>	Power Supply



These devices have limited built-in ESD protection. The leads should be shorted together or the device placed in conductive foam during storage or handling to prevent electrostatic damage to the MOS gates.

### Absolute Maximum Ratings<sup>(1)(2)(3)</sup>

Supply Voltage (SV <sub>DD</sub> , PV <sub>DD</sub> ) <sup>(1)</sup>		5.25V
Storage Temperature		-65°C to +150°C
Input Voltage		-0.3V to V <sub>DD</sub> + 0.3V
Power Dissipation <sup>(4)</sup>		Internally limited
ESD Rating <sup>(5)</sup>		2000V
ESD Rating <sup>(6)</sup>		200V
Junction Temperature		150°C
Thermal Resistance	θ <sub>JA</sub> (YZR)	114°C/W
Soldering Information		See AN-1112 (SNVA009) Micro SMD Wafer Level Chip Scale

- (1) "Absolute Maximum Ratings" indicate limits beyond which damage to the device may occur, including inoperability and degradation of device reliability and/or performance. Functional operation of the device and/or non-degradation at the *Absolute Maximum Ratings* or other conditions beyond those indicated in the *Recommended Operating Conditions* is not implied. The *Recommended Operating Conditions* indicate conditions at which the device is functional and the device should not be operated beyond such conditions. All voltages are measured with respect to the ground pin, unless otherwise specified.
- (2) The *Electrical Characteristics* tables list ensured specifications under the listed *Recommended Operating Conditions* except as otherwise modified or specified by the *Electrical Characteristics Conditions* and/or Notes. Typical specifications are estimations only and are not ensured.
- (3) If Military/Aerospace specified devices are required, please contact the TI Sales Office/ Distributors for availability and specifications.
- (4) The maximum power dissipation must be derated at elevated temperatures and is dictated by T<sub>JMAX</sub>, θ<sub>JA</sub>, and the ambient temperature, T<sub>A</sub>. The maximum allowable power dissipation is P<sub>DMAX</sub> = (T<sub>JMAX</sub> - T<sub>A</sub>) / θ<sub>JA</sub> or the number given in *Absolute Maximum Ratings*, whichever is lower.
- (5) Human body model, applicable std. JESD22-A114C.
- (6) Machine model, applicable std. JESD22-A115-A.

### Operating Ratings

Temperature Range T <sub>MIN</sub> ≤ T <sub>A</sub> ≤ T <sub>MAX</sub>	-40°C ≤ T <sub>A</sub> ≤ +85°C
Supply Voltage (SV <sub>DD</sub> , PV <sub>DD</sub> )	2.7V ≤ V <sub>DD</sub> ≤ 5.0V

### Electrical Characteristics V<sub>DD</sub> = 3.6V<sup>(1)</sup>

The following specifications apply for V<sub>DD</sub> = 3.6V, A<sub>V-BTL</sub> = 20dB (R<sub>F</sub> = 200kΩ, R<sub>IN</sub> = 20kΩ), Z<sub>L</sub> = 15Ω+1μF, unless otherwise specified. Limits apply for T<sub>A</sub> = 25°C.

Symbol	Parameter	Conditions	LM48556		Units (Limits)
			Typical <sup>(2)</sup>	Limit <sup>(3)</sup>	
I <sub>DD</sub>	Quiescent Power Supply Current	V <sub>IN</sub> = 0V	4.8	7	mA (max)
I <sub>SD</sub>	Shutdown Current	V <sub>SD</sub> = GND (Note 8)	0.1	1	μA (max)
V <sub>OS</sub>	Output Offset Voltage	C <sub>IN</sub> = 0.47μF, A <sub>V</sub> = 1V/V (0dB)	0.6	4	mV (max)
T <sub>WU</sub>	Wake-up Time		0.5		ms
V <sub>OUT</sub>	Output Voltage Swing	THD+N = 1% (max); f = 1kHz	14.2		V <sub>PP</sub>
		THD+N = 1% (max); f = 10kHz	11.5	11	V <sub>PP</sub> (min)
THD+N	Total Harmonic Distortion + Noise	V <sub>OUT</sub> = 11V <sub>PP</sub> , f = 1kHz			
		A <sub>V</sub> = 0dB	0.005		%
		A <sub>V</sub> = 20dB	0.03		%
ε <sub>OS</sub>	Output Noise	A-weighted filter, V <sub>IN</sub> = 0V Input referred	8		μV
PSRR	Power Supply Rejection Ratio	V <sub>RIPPLE</sub> = 200mV <sub>PP</sub> , f = 217Hz	80	60	dB (min)

- (1) The *Electrical Characteristics* tables list ensured specifications under the listed *Recommended Operating Conditions* except as otherwise modified or specified by the *Electrical Characteristics Conditions* and/or Notes. Typical specifications are estimations only and are not ensured.
- (2) Typical values represent most likely parametric norms at T<sub>A</sub> = +25°C, and at the *Recommended Operation Conditions* at the time of product characterization and are not ensured.
- (3) Datasheet min/max specification limits are specified by test or statistical analysis.

### Electrical Characteristics $V_{DD} = 3.6V^{(1)}$ (continued)

The following specifications apply for  $V_{DD} = 3.6V$ ,  $A_{V-BTL} = 20dB$  ( $R_F = 200k\Omega$ ,  $R_{IN} = 20k\Omega$ ),  $Z_L = 15\Omega + 1\mu F$ , unless otherwise specified. Limits apply for  $T_A = 25^\circ C$ .

Symbol	Parameter	Conditions	LM48556		Units (Limits)
			Typical <sup>(2)</sup>	Limit <sup>(3)</sup>	
CMRR	Common Mode Rejection Ratio	Input Referred	70	60	dB (min)
$V_{LH}$	Logic High Threshold Voltage			1.2	V (min)
$V_{LL}$	Logic Low Threshold Voltage			0.45	V (max)

### Electrical Characteristics $V_{DD} = 4.5V^{(1)}$

The following specifications apply for  $V_{DD} = 4.5V$ ,  $A_{V-BTL} = 20dB$  ( $R_F = 200k\Omega$ ,  $R_{IN} = 20k\Omega$ ),  $Z_L = 15\Omega + 1\mu F$ , unless otherwise specified. Limits apply for  $T_A = 25^\circ C$ .

Symbol	Parameter	Conditions	LM48556		Units (Limits)
			Typical <sup>(2)</sup>	Limit <sup>(3)</sup>	
$I_{DD}$	Quiescent Power Supply Current	$V_{IN} = 0V$	6.5	10	mA (max)
$I_{SD}$	Shutdown Current	$\overline{V_{SD}} = GND$ (Note 8)	0.1	1	$\mu A$ (max)
$V_{OS}$	Output Offset Voltage	$C_{IN} = 0.47\mu F$ , $A_V = 1V/V$ (0dB)	0.6	4	mV (max)
$T_{WU}$	Wake-up Time		0.5		ms (max)
$V_{OUT}$	Output Voltage Swing	THD+N = 1% (max); $f = 1kHz$	17.5		$V_{PP}$
		THD+N = 1% (max); $f = 10kHz$	14.6	14	$V_{PP}$ (min)
THD+N	Total Harmonic Distortion + Noise	$V_{OUT} = 14V_{PP}$ , $f = 1kHz$			
		$A_V = 0dB$	0.005		%
		$A_V = 20dB$	0.03		%
$\epsilon_{OS}$	Output Noise	A-weighted filter, $V_{IN} = 0V$ Input referred	8		$\mu V$
PSRR	Power Supply Rejection Ratio	$V_{RIPPLE} = 200mV_{PP}$ , $f = 217Hz$ ,	80	60	dB (min)
CMRR	Common Mode Rejection Ratio	Input Referred	70	60	dB (min)
$V_{LH}$	Logic High Threshold Voltage			1.2	V (min)
$V_{LL}$	Logic Low Threshold Voltage			0.45	V (max)

- (1) The *Electrical Characteristics* tables list ensured specifications under the listed *Recommended Operating Conditions* except as otherwise modified or specified by the *Electrical Characteristics Conditions* and/or Notes. Typical specifications are estimations only and are not ensured.
- (2) Typical values represent most likely parametric norms at  $T_A = +25^\circ C$ , and at the *Recommended Operation Conditions* at the time of product characterization and are not ensured.
- (3) Datasheet min/max specification limits are specified by test or statistical analysis.

### Typical Performance Characteristics

( $Z_L = 15\Omega + 1\mu F$ ,  $A_V = 20dB$ ,  $BW = 22kHz$ )

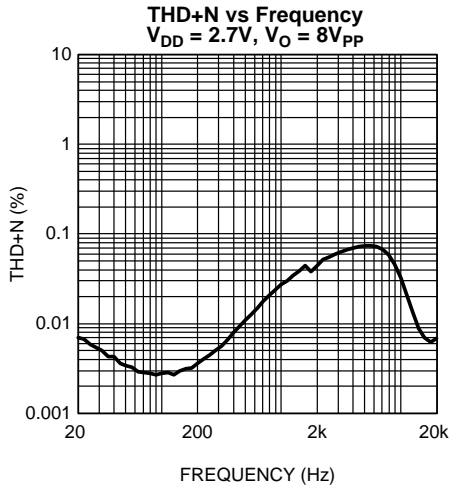


Figure 4.

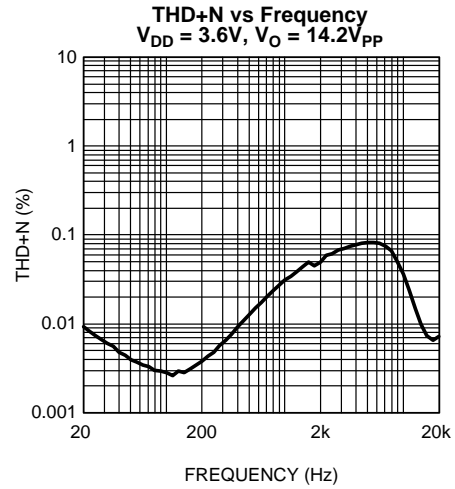


Figure 5.

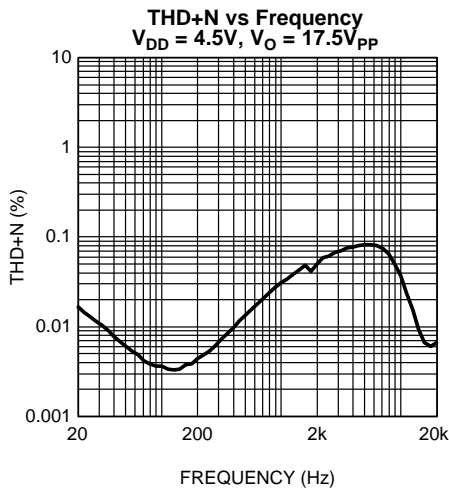


Figure 6.

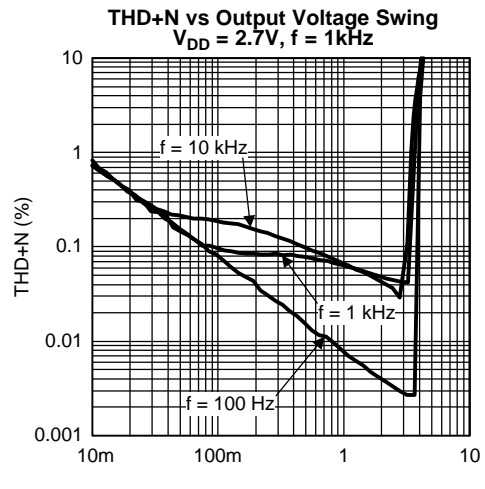


Figure 7.

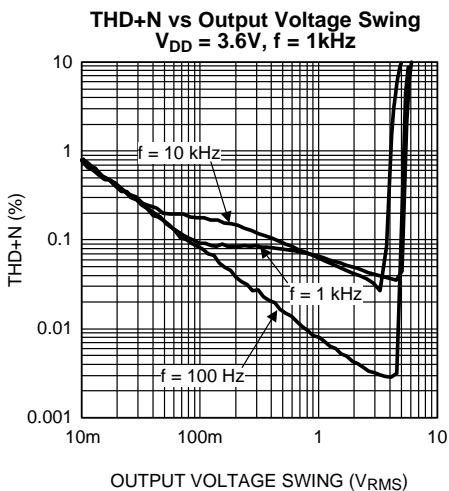


Figure 8.

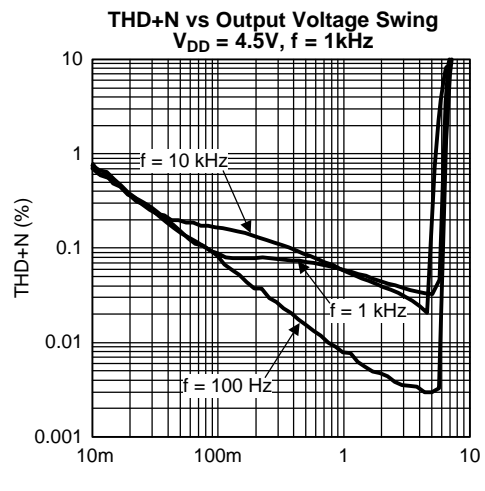


Figure 9.

**Typical Performance Characteristics (continued)**

(  $Z_L = 15\Omega + 1\mu F$ ,  $A_V = 20dB$ ,  $BW = 22kHz$  )

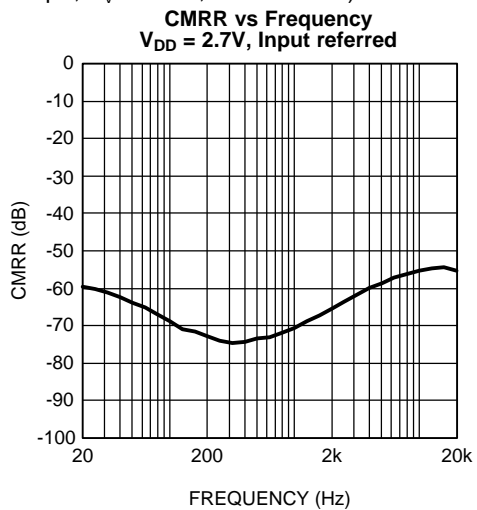


Figure 10.

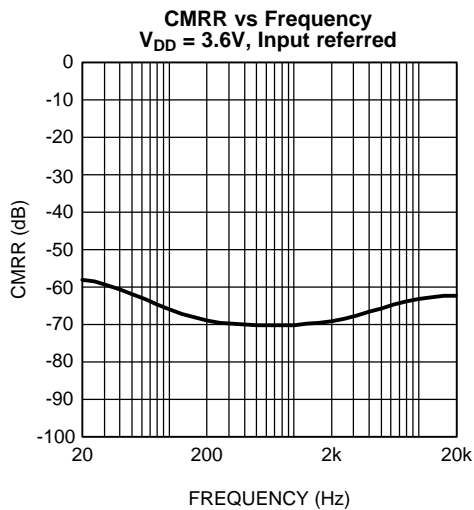


Figure 11.

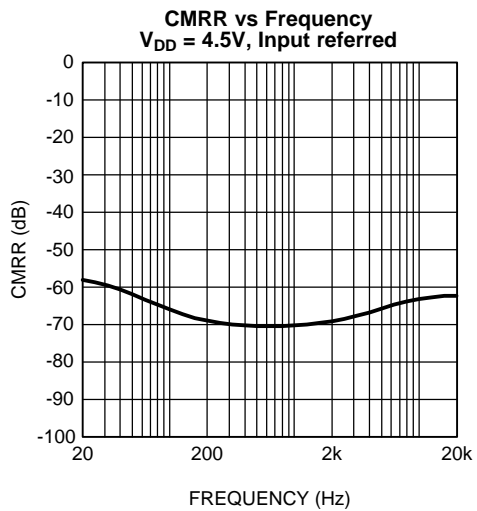


Figure 12.

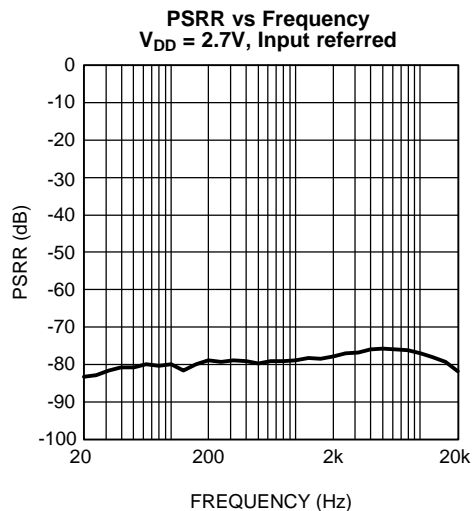


Figure 13.

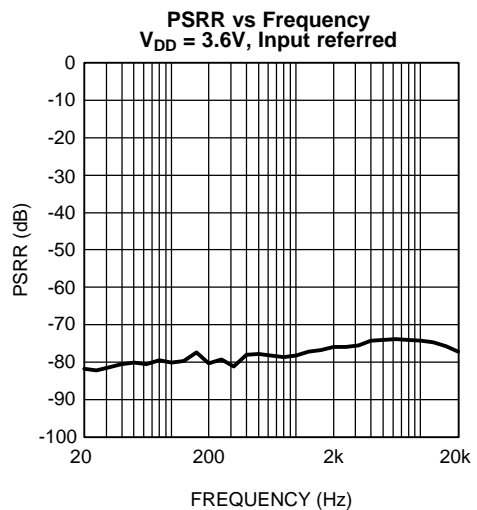


Figure 14.

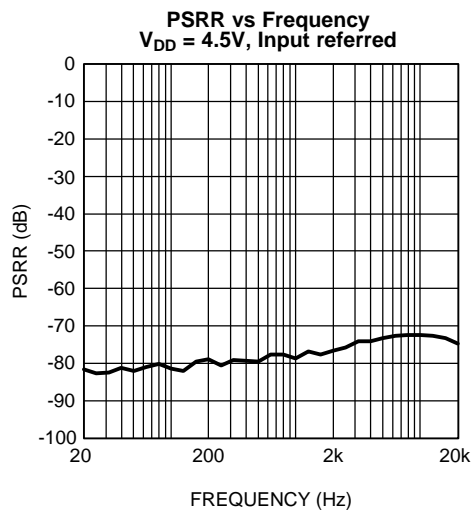


Figure 15.

**Typical Performance Characteristics (continued)**

(  $Z_L = 15\Omega + 1\mu F$ ,  $A_V = 20dB$ ,  $BW = 22kHz$ )

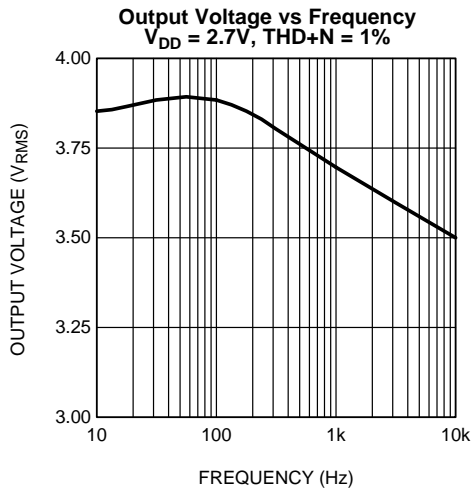


Figure 16.

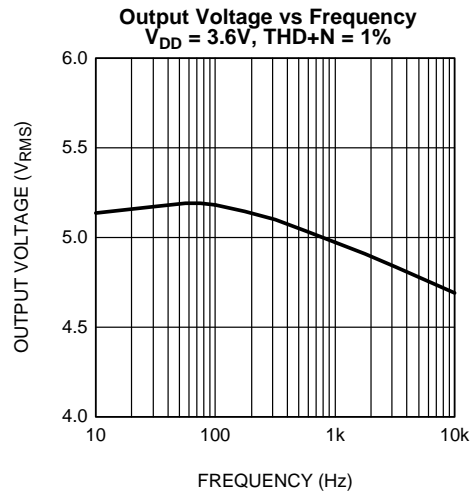


Figure 17.

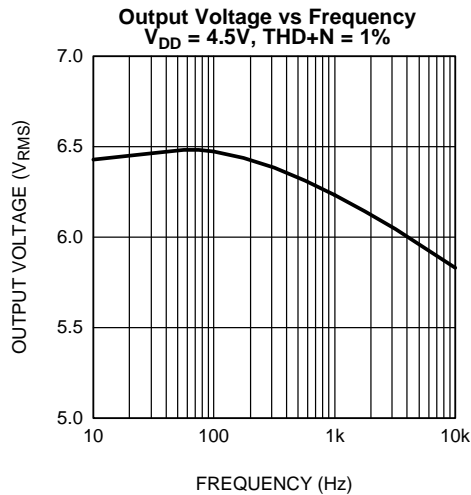


Figure 18.

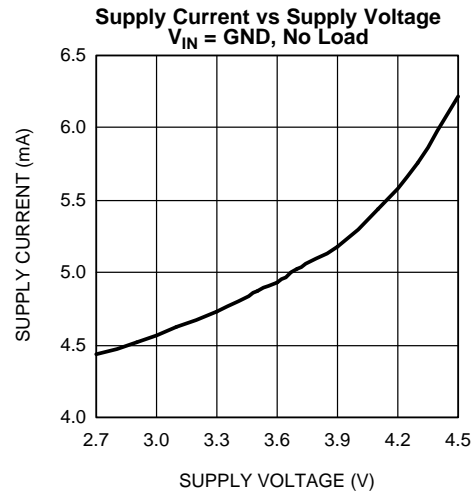


Figure 19.

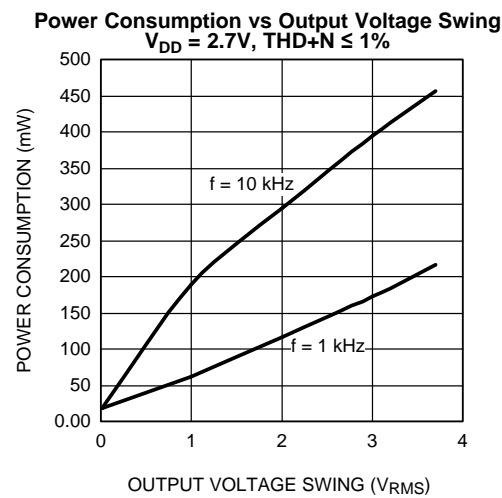


Figure 20.

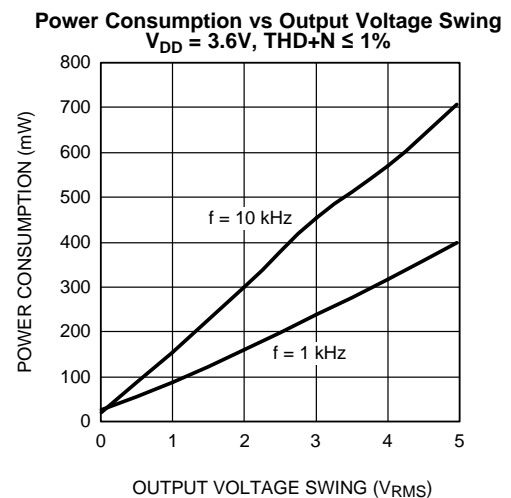
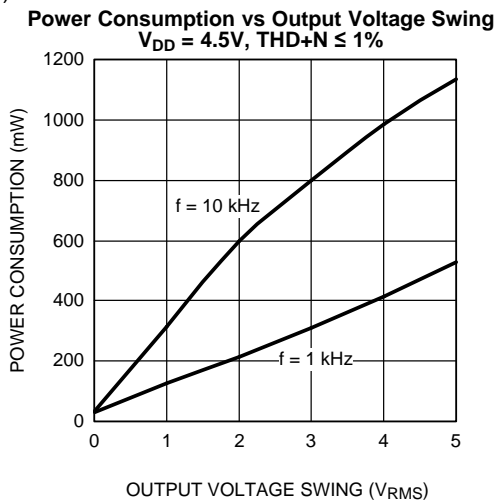


Figure 21.



**Typical Performance Characteristics (continued)**

(  $Z_L = 15\Omega + 1\mu F$ ,  $A_V = 20dB$ ,  $BW = 22kHz$  )



**Figure 22.**

## APPLICATION INFORMATION

### GENERAL AMPLIFIER FUNCTION

The LM48556 is a fully differential ceramic speaker driver that utilizes TI's inverting charge pump technology to deliver the high drive voltages required by ceramic speakers, without the need for noisy, board-space consuming inductive based regulators. The low-noise, inverting charge pump creates a negative supply ( $CPV_{SS}$ ) from the positive supply ( $PV_{DD}$ ). Because the amplifiers operate from these bipolar supplies, the maximum output voltage swing for each amplifier is doubled compared to a traditional single supply device. Additionally, the LM48556 is configured as a bridge-tied load (BTL) device, quadrupling the maximum theoretical output voltage range when compared to a single supply, single-ended output amplifier, see [Bridge Configuration Explained](#) section. The charge pump and BTL configuration allow the LM48556 to deliver over  $17V_{P-P}$  at 1kHz to a  $1\mu F$  ceramic speaker while operating from a single 4.5V supply .

### DIFFERENTIAL AMPLIFIER EXPLANATION

The LM48556 features a differential input stage, which offers improved noise rejection compared to a single-ended input amplifier. Because a differential input amplifier amplifies the difference between the two input signals, any component common to both signals is cancelled. An additional benefit of the differential input structure is the possible elimination of the DC input blocking capacitors. Since the DC component is common to both inputs, and thus cancelled by the amplifier, the LM48556 can be used without input coupling capacitors when configured with a differential input signal.

### BRIDGE CONFIGURATION EXPLAINED

The LM48556 is designed to drive a load differentially, a configuration commonly referred to as a bridge-tied load (BTL). The BTL configuration differs from the single-ended configuration, where one side of the load is connected to ground. A BTL amplifier offers advantages over a single-ended device. Driving the load differentially doubles the output voltage compared to a single-ended amplifier under similar conditions. Any component common to both outputs is cancelled, thus there is no net DC voltage across the load, eliminating the DC blocking capacitors required by single-ended, single-supply amplifiers.

### SHUTDOWN FUNCTION

The LM48556 features a low current shutdown mode. Set  $\overline{SD} = GND$  to disable the amplifier and reduce supply current to  $0.1\mu A$ . Switch  $\overline{SD}$  between  $V_{DD}$  and GND for minimum current consumption in shutdown. The LM48556 may be disabled with shutdown voltages less than 0.45V, however, the idle current will be greater than the typical  $0.1\mu A$  value.

### PROPER SELECTION OF EXTERNAL COMPONENTS

#### Power Supply Bypassing/Filtering

Proper power supply bypassing is critical for low noise performance and high PSRR. Place the supply bypass capacitors as close to the device as possible. Place a  $4.7\mu F$  tantalum capacitor in parallel with a  $0.1\mu F$  ceramic capacitor from  $V_{DD}$  to GND. Additional bulk capacitance may be added as required.

#### Charge Pump Capacitor Selection

Use low ESR ceramic capacitors (less than  $100m\Omega$ ) for optimum performance.

#### Charge Pump Flying Capacitor (C1)

The flying capacitor (C1) affects the load regulation and output impedance of the charge pump. A C1 value that is too low results in a loss of current drive, leading to a loss of amplifier headroom. A higher valued C1 improves load regulation and lowers charge pump output impedance to an extent. Above  $4.7\mu F$ , the  $R_{DS(ON)}$  of the charge pump switches and the ESR of C1 and  $C_{SS}$  dominate the output impedance. A lower value capacitor can be used in systems with low maximum output power requirements.

### Charge Pump Hold Capacitor ( $C_{SS}$ )

The value and ESR of the hold capacitor ( $C_{SS}$ ) directly affects the ripple on  $CPV_{SS}$ . Increasing the value of  $C_{SS}$  reduces output ripple. Decreasing the ESR of  $C_{SS}$  reduces both output ripple and charge pump output impedance. A lower value capacitor can be used in systems with low maximum output power requirements.

### Gain Setting Resistor Selection

The amplifier gain of the LM48556 is set by four external resistors, two per each input,  $R_{IN\_}$  and  $R_{F\_}$  [Figure 1](#). The amplifier gain is given by [Equation 1](#):

$$A_V = R_F / R_{IN} \quad (V/V) \quad (1)$$

Careful matching of the resistor pairs,  $R_{F+}$  and  $R_{F-}$ , and  $R_{IN+}$  and  $R_{IN-}$ , is required for optimum performance. Any mismatch between the resistors results in a differential gain error that leads to an increase in THD+N, decrease in PSRR and CMRR, as well as an increase in output offset voltage. Resistors with a tolerance of 1% or better are recommended.

The gain setting resistors should be placed as close to the device as possible. Keeping the input traces close together and of the same length increases noise rejection in noisy environments. Noise coupled onto the input traces which are physically close to each other will be common mode and easily rejected.

### Feedback Capacitor Selection

Due to their capacitive nature, ceramic speakers poorly reproduce high frequency audio content. At high frequencies, a ceramic speaker presents a low impedance load to the amplifier, increasing the required drive current. The higher output current can drive the device into clipping, increasing THD+N. Low-pass filtering the audio signal improves audio quality by decreasing the signal amplitude at high frequencies, reducing the speaker drive current. Adding a capacitor in parallel with each feedback resistor creates a simple low-pass filter with the -3dB point determined by [Equation 2](#):

$$f_{-3dB} = 1 / 2\pi R_F C_F \quad (\text{Hz})$$

Where

- $R_F$  is the value of the feedback resistor determined by [Equation 1](#) in the [Gain Setting Resistor Selection](#) section
  - $C_F$  is the value of the feedback capacitor
- (2)

The feedback capacitor is optional and not required for normal operation.

### Input Capacitor Selection

Input capacitors block the DC component of the audio signal, eliminating any conflict between the DC component of the audio source and the bias voltage of the LM48556. The input capacitors create a high-pass filter with the input resistors  $R_{IN}$ . The -3dB point of the high pass filter is found using [Equation 3](#) below.

$$f = 1 / 2\pi R_{IN} C_{IN} \quad (\text{Hz})$$

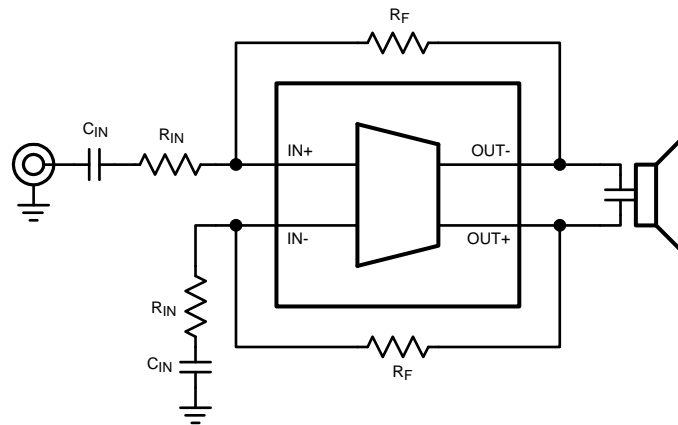
Where

- the value of  $R_{IN}$  is determined by [Equation 1](#) in the [Gain Setting Resistor Selection](#) section
- (3)

When the LM48556 is using a single-ended source, power supply noise on the ground is seen as an input signal. Setting the high-pass filter point above the power supply noise frequencies, 217Hz in a GSM phone, for example, filters out the noise such that it is not amplified and heard on the output. Capacitors with a tolerance of 1% or better are recommended for impedance matching and improved CMRR and PSRR.

## SINGLE-ENDED AUDIO AMPLIFIER CONFIGURATION

The LM48556 is compatible with single-ended sources. [Figure 4](#) shows the typical single-ended applications circuit.

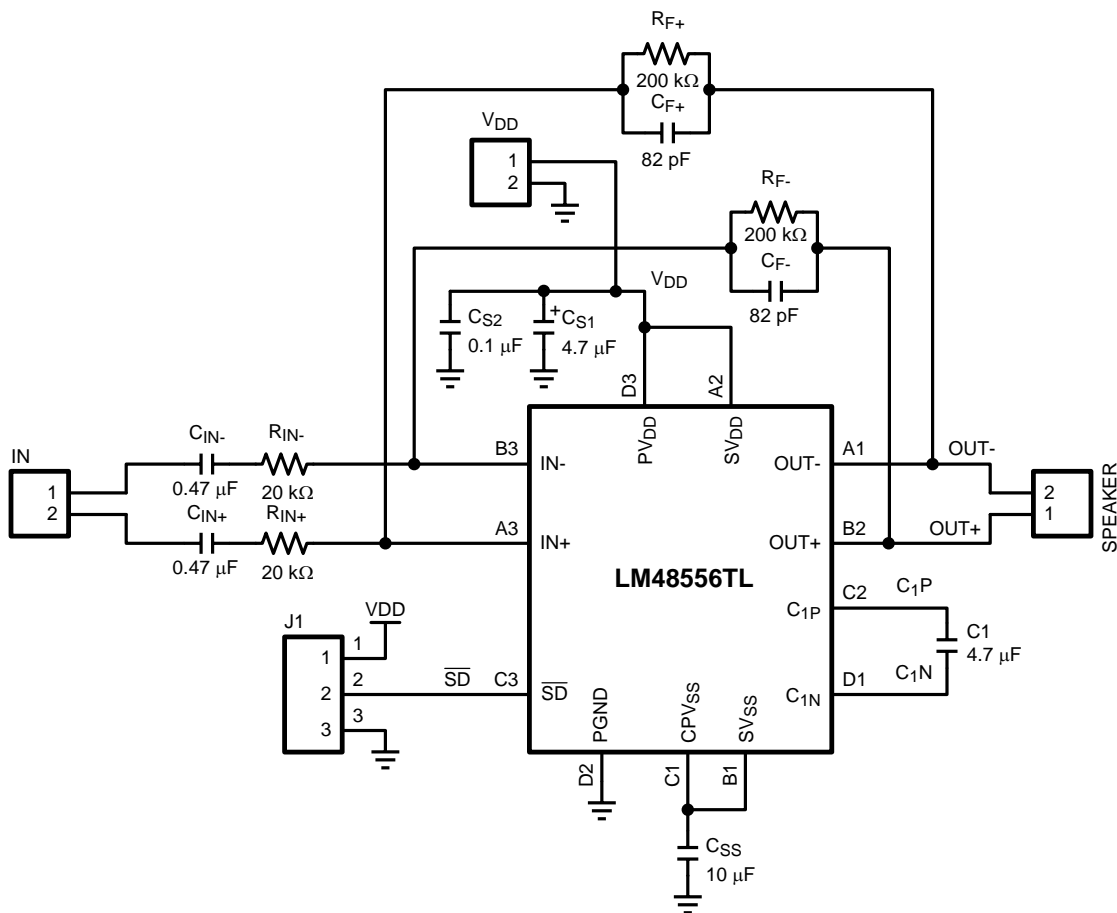


**Figure 23. Single-Ended Input Configuration**

## Bill Of Materials

Component	Description	Designator	Footprint	Quantity
LM48556TL	LM48556TL	LM48556TL	LM48556TL	1
Capacitor	4.7 $\mu$ F, ceramic, low ESR (<0.1 $\Omega$ ) 16V, -40°C to +85°C	C1	CR3216-1206	1
Capacitor	82 $\mu$ F, 16V, -40°C to +85°C	C <sub>F+</sub>	CR2012-0805	1
Capacitor	82 $\mu$ F, 16V, -40°C to +85°C	C <sub>F-</sub>	CR2012-0805	1
Capacitor	0.47 $\mu$ F, 16V, -40°C to +85°	C <sub>IN+</sub>	CR2012-0805	1
Capacitor	0.47 $\mu$ F, 16V, -40°C to +85°C	C <sub>IN-</sub>	CR2012-0805	1
Capacitor	4.7 $\mu$ F, 16V, -40°C to +85°C	C <sub>S1</sub>	CR3216-1206	1
Capacitor	0.1 $\mu$ F ceramic, 16V, -40°C to +85°C	C <sub>S2</sub>	CR2012-0805	1
Capacitor	10 $\mu$ F ceramic, low ESR (<0.1 $\Omega$ ) 16V, -40°C to +85°C	C <sub>SS</sub>	CR3216-1206	1
Header, 2-Pin	Header 2	IN	HDR1X2	1
Resistor	200k $\Omega$	R <sub>F+</sub>	CR2012-0805	1
Resistor	200k $\Omega$	R <sub>F-</sub>	CR2012-0805	1
Resistor	200k $\Omega$	R <sub>IN+</sub>	CR2012-0805	1
Resistor	200k $\Omega$	R <sub>IN-</sub>	CR2012-0805	1
Header, 2-Pin	Header 2	SPEAKER	HDR1X2	1
Header, 2-Pin	Header 2	V <sub>DD</sub>	HDR1X2	1
Header, 3-Pin	3-pole jumper	J1	3-pole jumper	1

Demonstration Board Schematic



Demonstration Board PCB Views

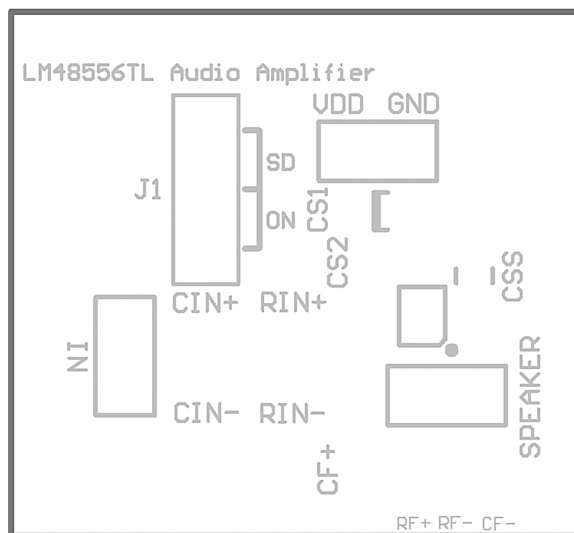


Figure 24. Top Overlay

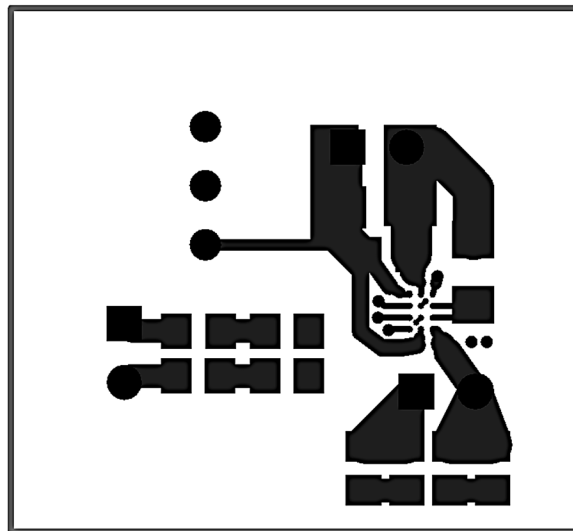


Figure 25. Top Layer

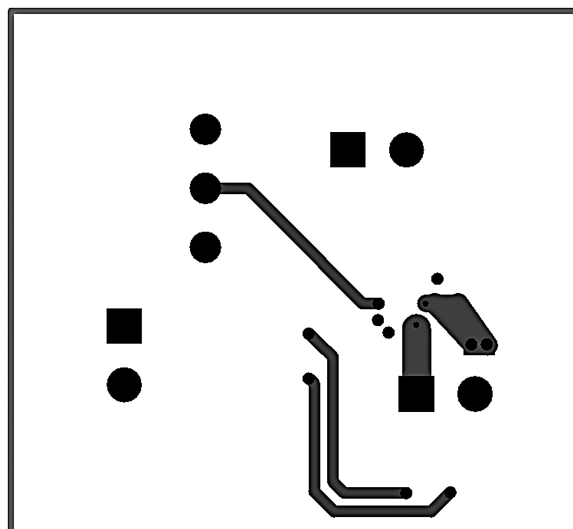


Figure 26. Mid Layer 1

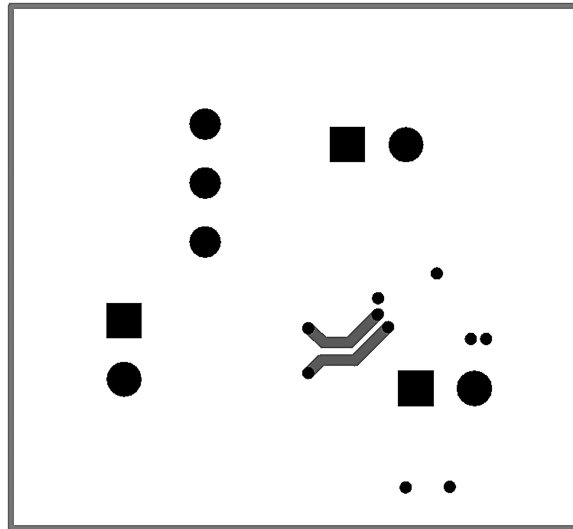


Figure 27. Mid Layer 2

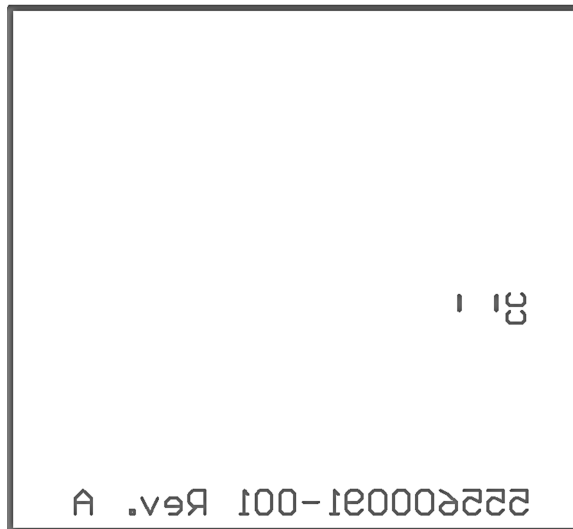
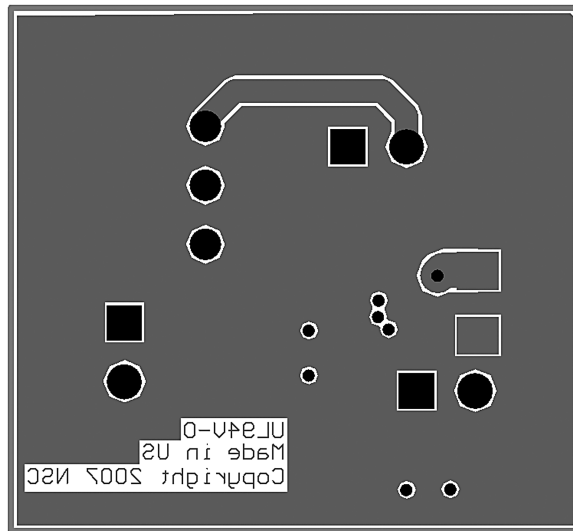


Figure 28. Bottom Overlay



**Figure 29. Bottom Layer**



**REVISION HISTORY**

<b>Rev</b>	<b>Date</b>	<b>Description</b>
1.0	06/03/08	Initial release.
1.01	12/09/08	Changed Power Supply Voltage Limits from 4.5V to 5.0V.
B	05/02/2013	Changed layout of National Data Sheet to TI format

**PACKAGING INFORMATION**

Orderable Device	Status (1)	Package Type	Package Drawing	Pins	Package Qty	Eco Plan (2)	Lead/Ball Finish	MSL Peak Temp (3)	Op Temp (°C)	Top-Side Markings (4)	Samples
LM48556TL/NOPB	ACTIVE	DSBGA	YZR	12	250	Green (RoHS & no Sb/Br)	SNAGCU	Level-1-260C-UNLIM		GK4	<a href="#">Samples</a>
LM48556TLX/NOPB	ACTIVE	DSBGA	YZR	12	3000	Green (RoHS & no Sb/Br)	SNAGCU	Level-1-260C-UNLIM		GK4	<a href="#">Samples</a>

(1) The marketing status values are defined as follows:

**ACTIVE:** Product device recommended for new designs.

**LIFEBUY:** TI has announced that the device will be discontinued, and a lifetime-buy period is in effect.

**NRND:** Not recommended for new designs. Device is in production to support existing customers, but TI does not recommend using this part in a new design.

**PREVIEW:** Device has been announced but is not in production. Samples may or may not be available.

**OBSOLETE:** TI has discontinued the production of the device.

(2) Eco Plan - The planned eco-friendly classification: Pb-Free (RoHS), Pb-Free (RoHS Exempt), or Green (RoHS & no Sb/Br) - please check <http://www.ti.com/productcontent> for the latest availability information and additional product content details.

**TBD:** The Pb-Free/Green conversion plan has not been defined.

**Pb-Free (RoHS):** TI's terms "Lead-Free" or "Pb-Free" mean semiconductor products that are compatible with the current RoHS requirements for all 6 substances, including the requirement that lead not exceed 0.1% by weight in homogeneous materials. Where designed to be soldered at high temperatures, TI Pb-Free products are suitable for use in specified lead-free processes.

**Pb-Free (RoHS Exempt):** This component has a RoHS exemption for either 1) lead-based flip-chip solder bumps used between the die and package, or 2) lead-based die adhesive used between the die and leadframe. The component is otherwise considered Pb-Free (RoHS compatible) as defined above.

**Green (RoHS & no Sb/Br):** TI defines "Green" to mean Pb-Free (RoHS compatible), and free of Bromine (Br) and Antimony (Sb) based flame retardants (Br or Sb do not exceed 0.1% by weight in homogeneous material)

(3) MSL, Peak Temp. -- The Moisture Sensitivity Level rating according to the JEDEC industry standard classifications, and peak solder temperature.

(4) Multiple Top-Side Markings will be inside parentheses. Only one Top-Side Marking contained in parentheses and separated by a "~" will appear on a device. If a line is indented then it is a continuation of the previous line and the two combined represent the entire Top-Side Marking for that device.

**Important Information and Disclaimer:** The information provided on this page represents TI's knowledge and belief as of the date that it is provided. TI bases its knowledge and belief on information provided by third parties, and makes no representation or warranty as to the accuracy of such information. Efforts are underway to better integrate information from third parties. TI has taken and continues to take reasonable steps to provide representative and accurate information but may not have conducted destructive testing or chemical analysis on incoming materials and chemicals. TI and TI suppliers consider certain information to be proprietary, and thus CAS numbers and other limited information may not be available for release.

In no event shall TI's liability arising out of such information exceed the total purchase price of the TI part(s) at issue in this document sold by TI to Customer on an annual basis.

## TAPE AND REEL INFORMATION



### QUADRANT ASSIGNMENTS FOR PIN 1 ORIENTATION IN TAPE



\*All dimensions are nominal

Device	Package Type	Package Drawing	Pins	SPQ	Reel Diameter (mm)	Reel Width W1 (mm)	A0 (mm)	B0 (mm)	K0 (mm)	P1 (mm)	W (mm)	Pin1 Quadrant
LM48556TL/NOPB	DSBGA	YZR	12	250	178.0	8.4	1.68	2.13	0.76	4.0	8.0	Q1
LM48556TLX/NOPB	DSBGA	YZR	12	3000	178.0	8.4	1.68	2.13	0.76	4.0	8.0	Q1

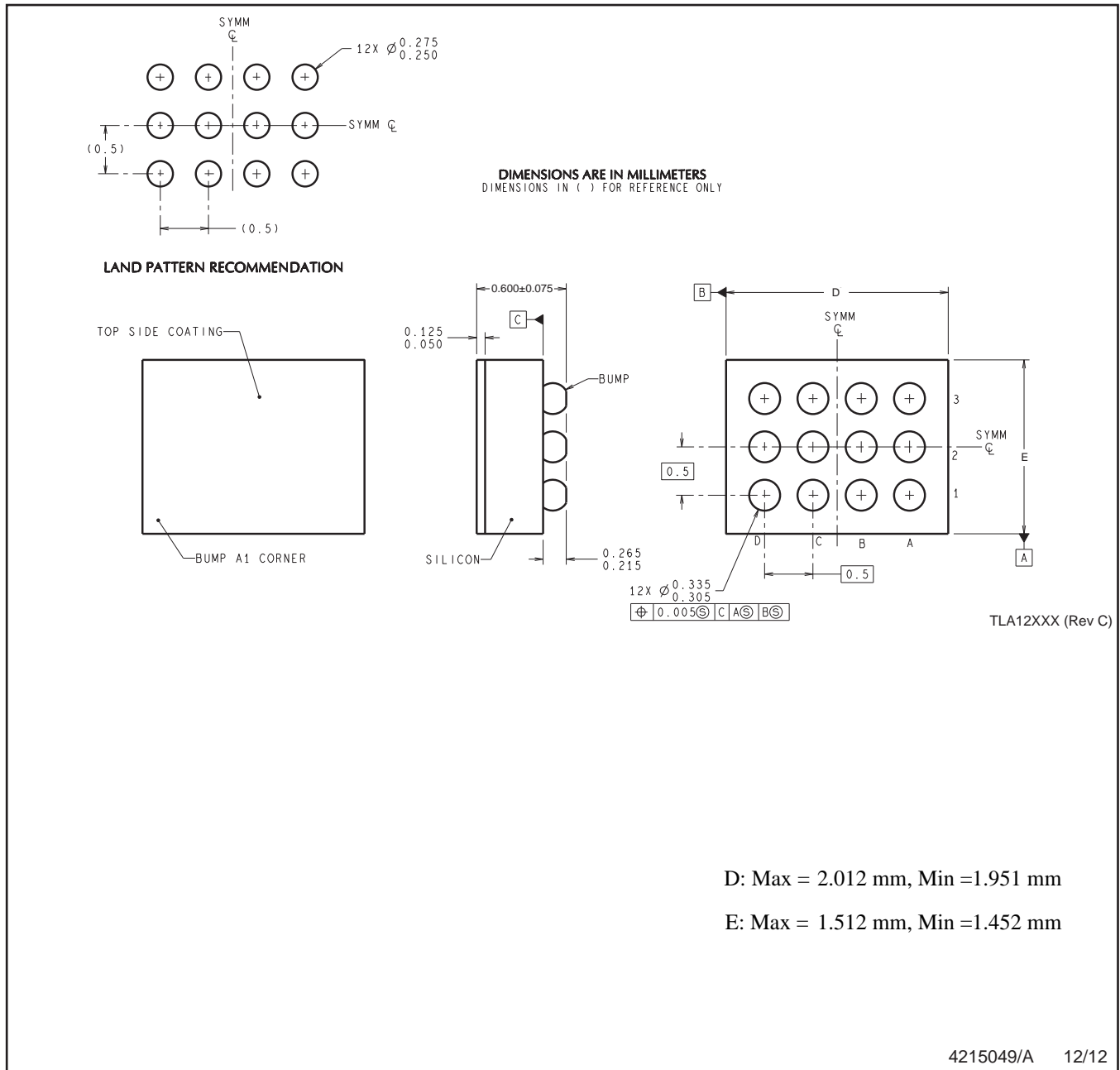
**TAPE AND REEL BOX DIMENSIONS**



\*All dimensions are nominal

Device	Package Type	Package Drawing	Pins	SPQ	Length (mm)	Width (mm)	Height (mm)
LM48556TL/NOPB	DSBGA	YZR	12	250	210.0	185.0	35.0
LM48556TLX/NOPB	DSBGA	YZR	12	3000	210.0	185.0	35.0

YZR0012



NOTES: A. All linear dimensions are in millimeters. Dimensioning and tolerancing per ASME Y14.5M-1994.  
B. This drawing is subject to change without notice.

## IMPORTANT NOTICE

Texas Instruments Incorporated and its subsidiaries (TI) reserve the right to make corrections, enhancements, improvements and other changes to its semiconductor products and services per JESD46, latest issue, and to discontinue any product or service per JESD48, latest issue. Buyers should obtain the latest relevant information before placing orders and should verify that such information is current and complete. All semiconductor products (also referred to herein as "components") are sold subject to TI's terms and conditions of sale supplied at the time of order acknowledgment.

TI warrants performance of its components to the specifications applicable at the time of sale, in accordance with the warranty in TI's terms and conditions of sale of semiconductor products. Testing and other quality control techniques are used to the extent TI deems necessary to support this warranty. Except where mandated by applicable law, testing of all parameters of each component is not necessarily performed.

TI assumes no liability for applications assistance or the design of Buyers' products. Buyers are responsible for their products and applications using TI components. To minimize the risks associated with Buyers' products and applications, Buyers should provide adequate design and operating safeguards.

TI does not warrant or represent that any license, either express or implied, is granted under any patent right, copyright, mask work right, or other intellectual property right relating to any combination, machine, or process in which TI components or services are used. Information published by TI regarding third-party products or services does not constitute a license to use such products or services or a warranty or endorsement thereof. Use of such information may require a license from a third party under the patents or other intellectual property of the third party, or a license from TI under the patents or other intellectual property of TI.

Reproduction of significant portions of TI information in TI data books or data sheets is permissible only if reproduction is without alteration and is accompanied by all associated warranties, conditions, limitations, and notices. TI is not responsible or liable for such altered documentation. Information of third parties may be subject to additional restrictions.

Resale of TI components or services with statements different from or beyond the parameters stated by TI for that component or service voids all express and any implied warranties for the associated TI component or service and is an unfair and deceptive business practice. TI is not responsible or liable for any such statements.

Buyer acknowledges and agrees that it is solely responsible for compliance with all legal, regulatory and safety-related requirements concerning its products, and any use of TI components in its applications, notwithstanding any applications-related information or support that may be provided by TI. Buyer represents and agrees that it has all the necessary expertise to create and implement safeguards which anticipate dangerous consequences of failures, monitor failures and their consequences, lessen the likelihood of failures that might cause harm and take appropriate remedial actions. Buyer will fully indemnify TI and its representatives against any damages arising out of the use of any TI components in safety-critical applications.

In some cases, TI components may be promoted specifically to facilitate safety-related applications. With such components, TI's goal is to help enable customers to design and create their own end-product solutions that meet applicable functional safety standards and requirements. Nonetheless, such components are subject to these terms.

No TI components are authorized for use in FDA Class III (or similar life-critical medical equipment) unless authorized officers of the parties have executed a special agreement specifically governing such use.

Only those TI components which TI has specifically designated as military grade or "enhanced plastic" are designed and intended for use in military/aerospace applications or environments. Buyer acknowledges and agrees that any military or aerospace use of TI components which have **not** been so designated is solely at the Buyer's risk, and that Buyer is solely responsible for compliance with all legal and regulatory requirements in connection with such use.

TI has specifically designated certain components as meeting ISO/TS16949 requirements, mainly for automotive use. In any case of use of non-designated products, TI will not be responsible for any failure to meet ISO/TS16949.

### Products

Audio	<a href="http://www.ti.com/audio">www.ti.com/audio</a>
Amplifiers	<a href="http://amplifier.ti.com">amplifier.ti.com</a>
Data Converters	<a href="http://dataconverter.ti.com">dataconverter.ti.com</a>
DLP® Products	<a href="http://www.dlp.com">www.dlp.com</a>
DSP	<a href="http://dsp.ti.com">dsp.ti.com</a>
Clocks and Timers	<a href="http://www.ti.com/clocks">www.ti.com/clocks</a>
Interface	<a href="http://interface.ti.com">interface.ti.com</a>
Logic	<a href="http://logic.ti.com">logic.ti.com</a>
Power Mgmt	<a href="http://power.ti.com">power.ti.com</a>
Microcontrollers	<a href="http://microcontroller.ti.com">microcontroller.ti.com</a>
RFID	<a href="http://www.ti-rfid.com">www.ti-rfid.com</a>
OMAP Applications Processors	<a href="http://www.ti.com/omap">www.ti.com/omap</a>
Wireless Connectivity	<a href="http://www.ti.com/wirelessconnectivity">www.ti.com/wirelessconnectivity</a>

### Applications

Automotive and Transportation	<a href="http://www.ti.com/automotive">www.ti.com/automotive</a>
Communications and Telecom	<a href="http://www.ti.com/communications">www.ti.com/communications</a>
Computers and Peripherals	<a href="http://www.ti.com/computers">www.ti.com/computers</a>
Consumer Electronics	<a href="http://www.ti.com/consumer-apps">www.ti.com/consumer-apps</a>
Energy and Lighting	<a href="http://www.ti.com/energy">www.ti.com/energy</a>
Industrial	<a href="http://www.ti.com/industrial">www.ti.com/industrial</a>
Medical	<a href="http://www.ti.com/medical">www.ti.com/medical</a>
Security	<a href="http://www.ti.com/security">www.ti.com/security</a>
Space, Avionics and Defense	<a href="http://www.ti.com/space-avionics-defense">www.ti.com/space-avionics-defense</a>
Video and Imaging	<a href="http://www.ti.com/video">www.ti.com/video</a>

### TI E2E Community

[e2e.ti.com](http://e2e.ti.com)