

DS25C400 Quad 2.5 Gbps Serializer/Deserializer

Check for Samples: [DS25C400](#)

FEATURES

- Quad Serializer/Deserializer
- Data rate per channel: 2.125 - 2.5 Gbps or 1.0625 - 1.25 Gbps
- Supports 106.25 - 125 MHz differential reference input clock
- Low jitter clock synthesizers for clock distribution
- 8-bit or 10-bit parallel I/O Interface conforms to SSTL_18 Class 1 (also interfaces to 1.8V HSTL or 1.8V LVCMOS)
- On-chip 8b/10b encoder and decoder
- High speed serial CML drivers
- High speed serial CML on-chip terminations
- Selectable pre-emphasis and equalization
- On-chip Comma Detect for character alignment
- On-chip local loopback test mode
- On-chip pattern generator and error checker to support BIST
- Hot plug protection
- Low power, 420 mW (typ) per channel
- 324-ball TE-PBGA package
- Operating temperature -40°C to $+85^{\circ}\text{C}$

DESCRIPTION

The DS25C400 is a four-channel serializer/deserializer (SERDES) for high-speed serial data transmission over controlled impedance transmission media such as a printed circuit board backplane or twin-axial cable. It is capable of transmitting and receiving serial data of 2.125–2.5 Gbps or 1.0625–1.25 Gbps per channel.

Each transmit section of the DS25C400 contains a low-jitter clock synthesizer, an 8-bit or 10-bit parallel to serial converter with built in 8b/10b encoder, and a CML output driver with selectable pre-emphasis optimized for backplane applications. Its receive section contains an input limiting amplifier with on-chip terminations and selectable equalization levels, a clock/data recovery PLL, a comma detector and a serial to parallel converter with built-in 8b/10b decoder.

The DS25C400 has built-in local loopback test mode, pseudo-random pattern generator and error detector to support self-testing.

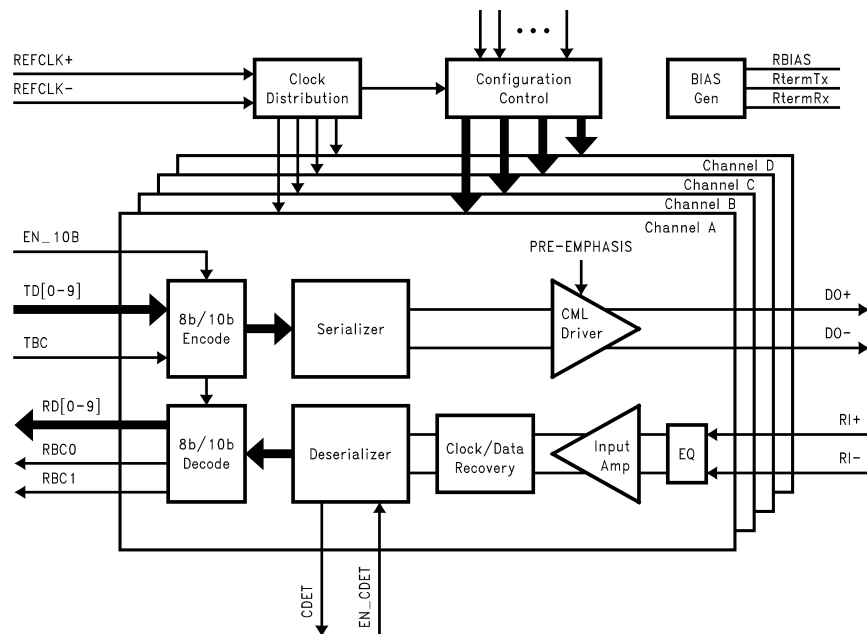
The DS25C400 requires no external components for its clock synthesizers and clock recovery PLLs. Three external resistors are needed to set the proper bias currents and compensate for process variations to achieve tight tolerance on-chip terminations.



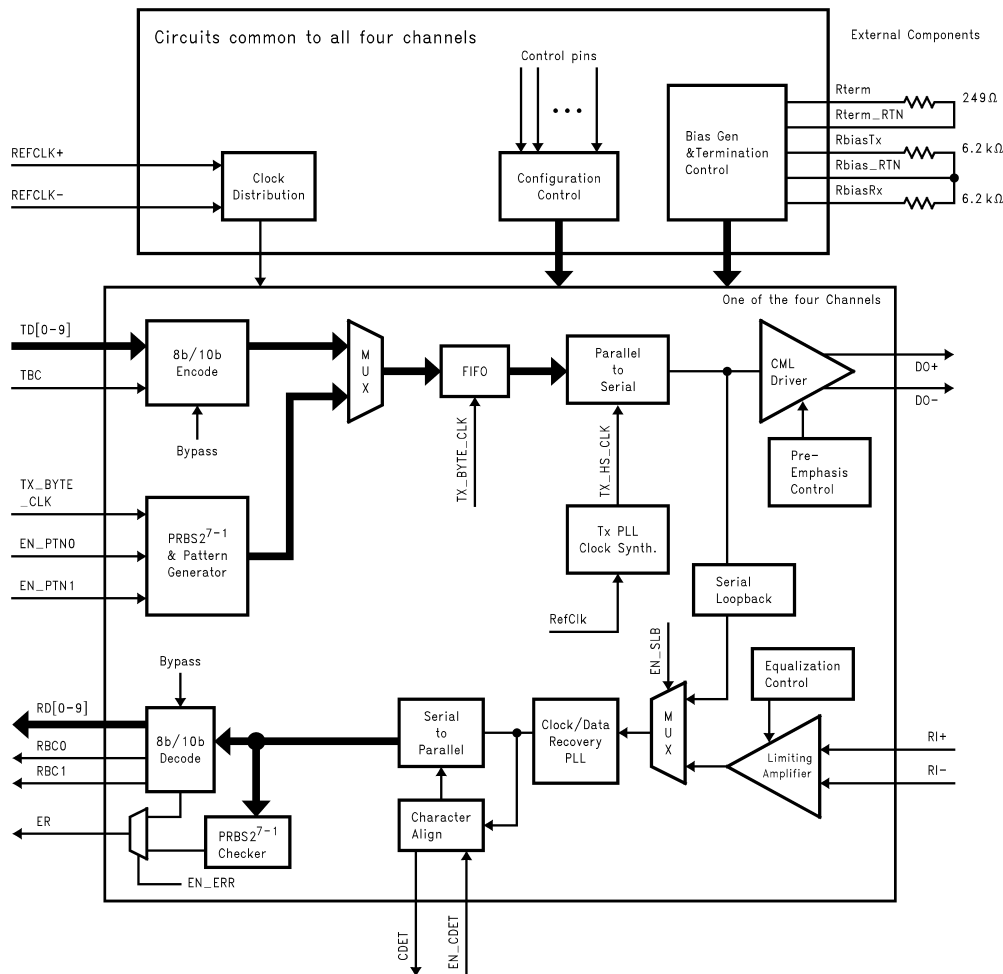
Please be aware that an important notice concerning availability, standard warranty, and use in critical applications of Texas Instruments semiconductor products and disclaimers thereto appears at the end of this data sheet.

All trademarks are the property of their respective owners.

General Function Diagram



Functional Block Diagram





These devices have limited built-in ESD protection. The leads should be shorted together or the device placed in conductive foam during storage or handling to prevent electrostatic damage to the MOS gates.

ABSOLUTE MAXIMUM RATINGS⁽¹⁾⁽²⁾

Supply Voltage (V_{DDQ} , DV_{DD})		-0.3V to +2.3V
Supply Voltage (V_{DDIO} , V_{DDHS} , V_{DDB})		-0.3V to +3.0V
SSTL Input Voltage		-0.3V to ($V_{DDQ} + 0.3V$)
LVC MOS Input Voltage		-0.3V to ($DV_{DD} + 0.3V$)
LVC MOS Output Voltage		-0.3V to ($DV_{DD} + 0.3V$)
CML Receiver Input Voltage		-0.3V to ($V_{DDHS} + 0.3V$)
CML Driver Output Voltage		-0.3V to ($V_{DDHS} + 0.3V$)
Junction Temperature		+125°C
Storage Temperature		-65°C to +150°C
Lead Temperature Soldering, 4 Seconds		+260°C
Maximum Package Power Dissipation at 25°C DS25C400TUT		5.68 W
Derating above 25°C		45.45 mW/°C
Thermal Resistance, θ_{JA}		22 °C/W
Junction-to-case Conductive Thermal Resistance, θ_{JC}		6.5 °C/W
ESD Rating	HBM, 1.5 k Ω , 100 pF	>2 kV
	EIAJ, 0 Ω , 200 pF	>200 V

- (1) "Absolute Maximum Ratings" are the ratings beyond which the safety of the device cannot be ensured. They are not meant to imply that the device should be operated at these limits.
- (2) If Military/Aerospace specified devices are required, please contact the Texas Instruments Sales Office/ Distributors for availability and specifications.

RECOMMENDED OPERATING CONDITIONS

	Min	Typ	Max	Unit
Supply Voltage (V_{DDQ} and DV_{DD} to DGND)	1.7	1.8	1.9	V
V_{DDIO} , V_{DDHS} and V_{DDB} to DGND or AGND	2.35	2.5	2.65	V
Temperature	-40	25	85	°C
Supply Noise Amplitude			<100	mV _{P-P}
Supply Noise Frequency			<1	MHz

ELECTRICAL CHARACTERISTICS

Over recommended operating supply and temperature ranges unless otherwise specified.

Symbol	Parameter	Conditions	Min	Typ ⁽¹⁾	Max	Units
SSTL_18 DC SPECIFICATIONS—Parallel I/O, Class I						
V_{REF}	Reference Voltage		0.83	0.90	0.97	V
V_{IH} (dc)	High Level Input Voltage		$V_{REF} + 0.125$		$V_{DDQ} + 0.300$	V
V_{IH} (ac)	AC Input Logic High		$V_{REF} + 0.250$			V
V_{IL} (dc)	Low Level Input Voltage		-0.300		$V_{REF} - 0.125$	V
V_{IL} (ac)	AC Input Logic Low				$V_{REF} - 0.250$	V
I_{IH}	High Level Input Current	$V_{IN} = V_{DDQ} = 1.9$ V	-10		+50	μ A
I_{IL}	Low Level Input Current	$V_{IN} = GND$, $V_{DDQ} = 1.9$ V	-10		+10	μ A

- (1) Typical parameters are measured at $V_{DDQ} = 1.8$ V, $DV_{DD} = 1.8$ V, $V_{DDHS} = 2.5$ V, $V_{DDIO} = 2.5$ V, $V_{DDB} = 2.5$ V, $T_A = 25^\circ\text{C}$. They are for reference purposes, and are not production-tested.

ELECTRICAL CHARACTERISTICS (continued)

Over recommended operating supply and temperature ranges unless otherwise specified.

Symbol	Parameter	Conditions	Min	Typ ⁽¹⁾	Max	Units
V _{OH} (dc)	High Level Output Voltage	I _{OH} = -6.3 mA, Unterminated, C _L = 8pF	V _{DDQ} -0.400			V
		Terminated, R = 50 Ω to V _{TT}	V _{DDQ} -0.550			V
V _{OL} (dc)	Low Level Output Voltage	I _{OL} = 6.3 mA, Unterminated, C _L = 8pF			0.400	V
		Terminated, R = 50 Ω to V _{TT}			0.550	V
LVC MOS DC SPECIFICATIONS—Control Pins EIA/JESD8-7 Compliant						
V _{IH}	High Level Input Voltage		0.65* DV _{DD}		DV _{DD}	V
V _{IL}	Low Level Input Voltage		0		0.35* DV _{DD}	V
I _{IH}	High Level Input Current	V _{IN} = DV _{DD} = 1.9 V (input and pull-low)		0.1		mA
I _{IH}	High Level Input Current	V _{IN} = DV _{DD} = 1.9 V (input with pull-high)	-10		+10	μA
I _{IL}	Low Level Input Current	V _{IN} = GND, DV _{DD} = 1.9 V (input with pull-low)	-10		+10	μA
I _{IL}	Low Level Input Current	V _{IN} = GND, DV _{DD} = 1.9 V (input with pull-high)		-0.1		mA
SUPPLY CURRENT						
I _{DD}	Total Supply Current	K28.5 pattern at 2.5 Gbps with no pre-emphasis. SSTL outputs no load termination resistors, Tx high speed serial outputs driving 100Ω differential, no high speed Rx input data. V _{DDHS} + V _{DDIO} + V _{DDB} DV _{DD} + V _{DDQ}		572	600	mA
				130	136.5	mA
P _D	Total Power Consumption	K28.5 pattern at 2.5 Gbps with no pre-emphasis. SSTL outputs no load termination resistors, Tx high speed serial outputs driving 100Ω differential, no high speed Rx input data. SERDES and SSTL I/O		1708	1940	mW
RECOMMENDED INPUT REFERENCE CLOCK (REFCLK±) AC coupled differential signal						
V _{IDS_{RCLK}}	Differential Input Voltage Figure 1	Terminated by 50Ω parallel termination	600		1500	mV _{p-p}
V _{ICM}	Common Mode Voltage	Terminated by 50Ω Parallel Termination	1.0		V _{DDHS} -0.5	V
R _{REFCLK}	Input Termination to GND	Equivalent Parallel Input Termination at REFCLK+ or REFCLK- to GND		100		Ω
f _{REF}	REFCLK Frequency Range		106.25		125	MHz
df _{REF}	REFCLK Frequency Variation	Variation from Nominal Frequency	-100		+100	ppm
t _{REF-DC}	REFCLK Duty Cycle ⁽²⁾	Between 50% of the differential voltage across REFCLK+ and REFCLK-	40	50	60	%
t _{REF-RJ}	REFCLK Input Random (rms) Jitter			3	5	ps
t _{REF-RJ}	REFCLK Input Peak-to-Peak Jitter			25	40	ps
t _{REF-X}	REFCLK Transition Time Figure 1	Transition time between 20% and 80% of the differential voltage across REFCLK+ and REFCLK-	0.2		1	ns
SERIALIZER						

(2) Duty cycle is defined as high period (t_{WH}) or low period (t_{WL}) ratio to clock period (t_{WH} + t_{WL}), measured at 50% of the differential voltage across REFCLK+ and REFCLK-.

ELECTRICAL CHARACTERISTICS (continued)

Over recommended operating supply and temperature ranges unless otherwise specified.

Symbol	Parameter	Conditions	Min	Typ ⁽¹⁾	Max	Units
DR _{DO}	Transmit Data Rate	Data Rate at DO±				
		High Data Rate Mode (EN_HDR = 1)	2.125		2.5	Gbps
		Low Data Rate Mode (EN_HDR = 0)	1.0625		1.25	Gbps
V _{ODS}	Output Differential Voltage Swing (DO+ – DO-) WITHOUT Pre-emphasis	DO+, DO- are terminated by external 50Ω to V _{DDHS} PSEL1 = 0, PSEL0 = 0	850	1065	1280	mV _{p-p}
		DO+, DO- are terminated by external 50Ω to V _{DDHS} PSEL1 = 0, PSEL0 = 1	TBD	1435	TBD	mV _{p-p}
	PSEL1 = 1, PSEL0 = 0	TBD	1610	TBD		
	PSEL1 = 1, PSEL0 = 1	TBD	1715	TBD		
V _{CM}	Output Common Mode Offset Voltage WITHOUT Pre-emphasis	DO+, DO- are terminated by external 50Ω to V _{DDHS} PSEL1 = 0, PSEL0 = 0	-10%	V _{DDHS} -0.3	+10%	V
		DO+, DO- are terminated by external 50Ω to V _{DDHS} PSEL1 = 0, PSEL0 = 1	-10%	V _{DDHS} -0.37	+10%	V
	Output Common Mode Offset Voltage WITH Pre-emphasis	PSEL1 = 1, PSEL0 = 0		V _{DDHS} -0.43		
		PSEL1 = 1, PSEL0 = 1		V _{DDHS} -0.50		
R _{DO}	Output Resistance	On-chip termination DO+ or DO- to V _{DDHS} , RTERM = 249Ω	45	50	55	Ω
C _{DO}	Capacitance to GND	DO+ or DO- to GND		1		pF
t _{DO-X}	Serial Data Output Transition Time WITHOUT Pre-emphasis	Measured between 20% and 80% of V _{ODS}	100	135	160	ps
JIT _{DO-DJ}	Serial Data Output Deterministic Jitter (Peak-to-Peak) ⁽³⁾⁽⁴⁾	Output K28.5 at 2.5 Gbps		0.1	0.13	UI
JIT _{DO-RJ}	Serial Data Output Random Jitter (Peak-to-Peak) ⁽³⁾⁽⁴⁾	Output D21.5 at 2.5 Gbps		0.13	0.15	UI
JIT _{DO-TJ}	Serial Data Output Total Jitter ⁽³⁾⁽⁴⁾	Output K28.5 pattern at 2.5 Gbps at BER of 10 ⁻¹²		0.2	0.25	UI
t _{LAT-TX}	Transmit Latency Figure 2	Transmit K28.5 from TD[0–9] to DO± at 2.5 Gbps, EN_10B = 1	30		48	Bits
		Transmit K28.5 from TD[0–9] to DO± at 2.5 Gbps, EN_10B = 0	45		58	Bits
t _{DO-LOCK}	Lock Time	Time to achieve frequency lock to REFCLK. Output K28.5 at 2.5 Gbps.			0.5	ms
DESERIALIZER						
DR _{RI}	Receive Data Rate	High Data Rate (EN_HDR = 1)	2.125		2.5	Gbps
		Low Data Rate (EN_HDR = 0)	1.0625		1.25	Gbps
VIDS _{RI}	Differential Input Voltage	RI+ – RI-	200		1500	mV _{p-p}
R _{RI}	Input Termination to V _{DDHS}	On-chip termination RI+ to RI- to V _{DDHS} EN_RAC = 0, RTERM = 249Ω:	45	50	55	Ω
C _{RI}	Input Capacitance to GND	RI+ or RI- to GND		1		pF
V _{RI-BIAS}	Input Bias Voltage	DC bias at RI+ or RI- when configure for AC couple (EN_RAC = 1)	0.9* V _{DDHS}	0.91* V _{DDHS}	0.92* V _{DDHS}	V

(3) K28.5 is a repeating periodic pattern (hex: 283, 17C - bin: 110000 0101, 001111 1010). D21.5 is a repeating periodic pattern (hex: 155 - bin: 1010101010). RPAT is a random data pattern with valid 8b/10b data codes of K28.5, K28.5, D3.1, D7.2, D11.3, D15.4, D19.5, D23.6, D27.7, D20.0, D21.1, D25.2 (hex: 283, 283, 263, 2B8, 30B, 2C5, 153, 197, 1E4, 0B4, 255, 299).

(4) Output Jitter and Jitter Tolerance are measured through characterization on sample basis. They are not production-tested. Output jitter is measured at a sample size of TBD. REFCLK± differential amplitude is 1.2 V_{p-p} with jitter of 3 ps (rms) or 25 ps (pk-pk) for Tx output jitter testing.

ELECTRICAL CHARACTERISTICS (continued)

Over recommended operating supply and temperature ranges unless otherwise specified.

Symbol	Parameter	Conditions	Min	Typ ⁽¹⁾	Max	Units
R _{RIAC}	Equivalent Parallel Input Termination	Equivalent parallel termination at RI+ or RI- to GND EN_RAC = 1, RTERM = 249Ω:	45	50	55	Ω
t _{LAT-RX}	Receive Latency Figure 3	Receive K28.5 from RI± to RD[0–9] at 2.5 Gbps, EN_10B = 1	76		95	Bits
		Receive K28.5 from RI± to RD[0–9] at 2.5 Gbps, EN_10B = 0	86		115	Bits
JIT _{RI-TL}	Input Jitter Tolerance Without Equalizer ⁽³⁾⁽⁴⁾	Receiving RPAT pattern at 2.5Gbps at BER of 10 ⁻¹² of random jitter (1.5MHz to 1.25GHz)	0.22			UI
		Receiving RPAT pattern at 2.5Gbps at BER of 10 ⁻¹² of non-sinusoidal deterministic jitter (1.5MHz to 1.25GHz)	0.5			UI
F _{FRI-LOCK}	Receiver Lock Range	Input data rate reference to local transmit data rate	-200		+200	ppm
t _{RI-LOCK}	Maximum Lock Time				500	μs
TIMING SPECIFICATIONS—Serializer, Low-Data-Rate Mode at 1.25 Gbps, EN_HDR = 0						
t _S	Setup Time Figure 4	TBC Falling Edge to TD[0–9] Valid	1.4			ns
t _H	Hold Time Figure 4	TBC Falling Edge to TD[0–9] Invalid	1.4			ns
f _{TBC}	TBC Frequency	At Line Date Rate of 1.0625 Gbps		106.25		MHz
		At Line Date Rate of 1.25 Gbps		125		MHz
TIMING SPECIFICATIONS—Serializer, High-Data-Rate Mode at 2.5 Gbps, EN_HDR = 1						
t _{VALID}	Valid Time Figure 5	TBC and TD[0–9] Valid	1.0			ns
t _{SK}	Edge Skew Figure 5	TBC and TD[0–9] Valid			1.5	ns
t _{XCT}	Transition Time Figure 5	TBC or TD[0–9] Transition Time			3.0	ns
f _{TBC}	TBC Frequency	At Line Data Rate of 2.125 Gbps		106.25		MHz
		At Line Data Rate of 2.5 Gbps		125		MHz
TIMING SPECIFICATIONS—Deserializer, High-Data-Rate Mode at 2.5 Gbps, EN_RBC = 0						
t _S	Setup Time Figure 6	RBC1 or RBC0 Rising Edge to the Corresponding Data Word at RD[0–9] Valid	1.4			ns
t _H	Hold Time Figure 6	RBC1 or RBC0 Rising Edge to the Corresponding Data Word at RD[0–9] Invalid	1.4			ns
t _{DC}	Duty Cycle	RBC1 or RBC0 Duty Cycle	40		60	%
t _{A-B}	RBC Clock Skew Figure 6	Rising Edge of RBC1 to Rising Edge of RBC0	3.8		4.2	ns
f _{RBC}	RBC Frequency	At Line Date Rate of 2.125 Gbps		106.25		MHz
		At Line Date Rate of 2.5 Gbps		125		MHz
TIMING SPECIFICATIONS—Deserializer, Low-Data-Rate Mode at 1.25 Gbps, EN_RBC = 0						
t _S	Setup Time Figure 6	RBC1 Rising Edge to RD[0–9] Valid	3.0			ns
t _H	Hold Time Figure 6	RBC1 Rising Edge to RD[0–9] Invalid	3.0			ns
t _{DC}	Duty Cycle	RBC1 Duty Cycle	40		60	%
t _{A-B}	RBC Clock Skew Figure 6	Rising Edge of RBC1 to Rising Edge of RBC0	7.6		8.4	ns
f _{RBC}	RBC Frequency	At Line Date Rate of 1.0625 Gbps		53.125		MHz
		At Line Date Rate of 1.25 Gbps		62.5		MHz
TIMING SPECIFICATIONS—Deserializer, High-Data-Rate Mode at 2.5 Gbps, EN_RBC = 1						
t _S	Setup Time Figure 7	RBC1 Rising Edge to RD[0–9] Valid	1.4			ns
t _H	Hold Time Figure 7	RBC1 Rising Edge to RD[0–9] Invalid	1.4			ns

ELECTRICAL CHARACTERISTICS (continued)

Over recommended operating supply and temperature ranges unless otherwise specified.

Symbol	Parameter	Conditions	Min	Typ ⁽¹⁾	Max	Units
f _{RBC}	RBC Frequency	At High Data Rate (EN_HDR = 1) 2.125 Gbps		212.5		MHz
		At High Data Rate (EN_HDR = 1) 2.5 Gbps		250		MHz
t _{XRBC}	RBC Transition Time	V _{REF} - 0.25 V to V _{REF} + 0.25V	0.4	0.6	0.8	ns
t _X	Output Data Transition Time	For RD[0–9], CDET and ER pins. Measured between 20% and 80% Levels	0.6	1.0	1.5	ns
TIMING SPECIFICATIONS—Deserializer, Low-Data-Rate Mode at 1.25 Gbps, EN_RBC = 1						
t _S	Setup Time Figure 7	RBC1 Rising Edge to RD[0–9] Valid	3.0			ns
t _H	Hold Time Figure 7	RBC1 Rising Edge to RD[0–9] Invalid	3.0			ns
f _{RBC}	RBC Frequency	At Low Data Rate (EN_HDR = 0) 1.0625 Gbps		106.25		MHz
		At Low Data Rate (EN_HDR = 0) 1.25 Gbps		125		MHz

AC TIMING DIAGRAMS

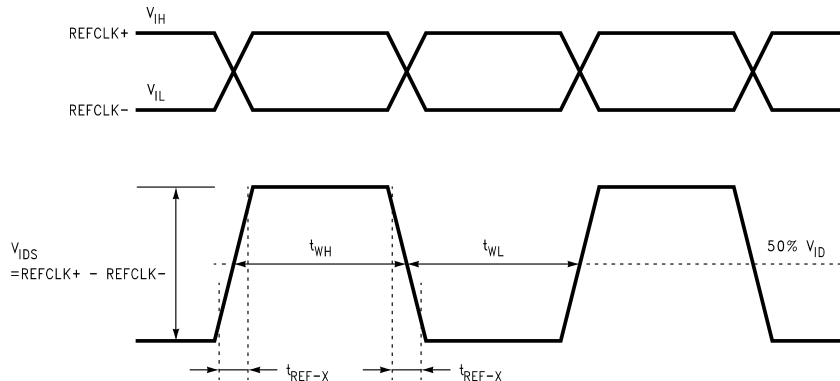


Figure 1. REFCLK Timing

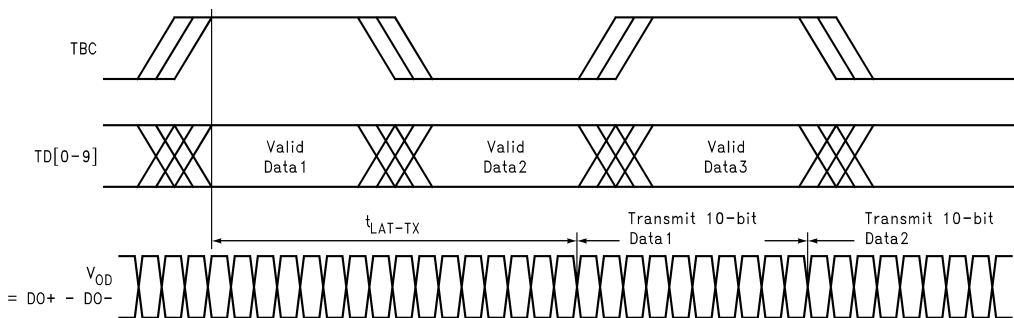


Figure 2. Transmit Latency (High Data Rate Mode)

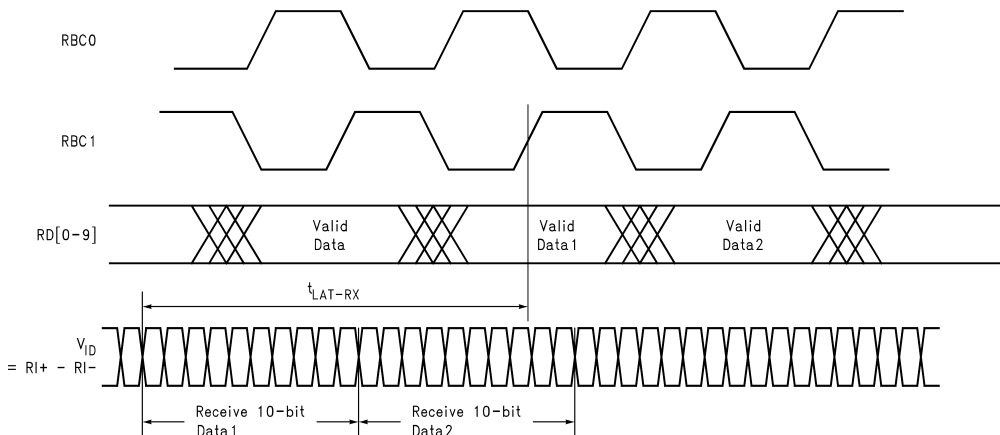


Figure 3. Receive Latency (EN_RBC = 1)

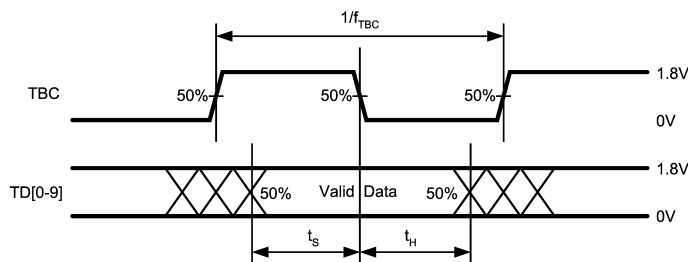


Figure 4. Transmit Input Data Bus Timing—Low Data Rate Mode

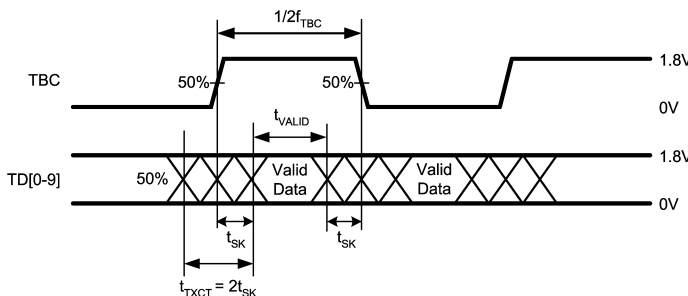


Figure 5. Transmit Input Data Timing—High Data Rate Mode

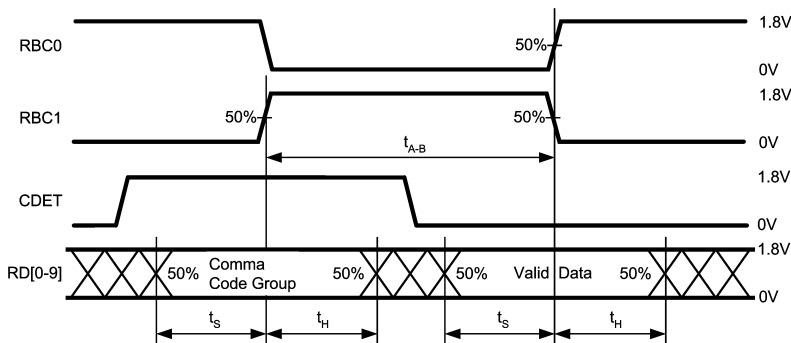


Figure 6. Receive Output Data Bus Timing—Low Data Rate or High Data Rate Mode (EN_RBC = 0)

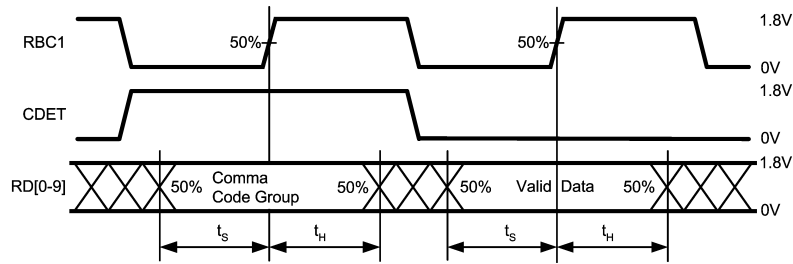


Figure 7. Receive Output Data Bus Timing—Low Data Rate or High Data Rate Mode (EN_RBC = 1)

TERMINATION AT THE HIGH SPEED INTERFACE

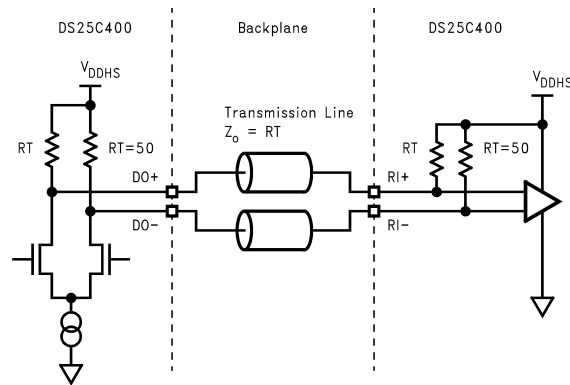


Figure 8. High Speed Interface — Direct-Coupled Mode (EN_RAC = 0)

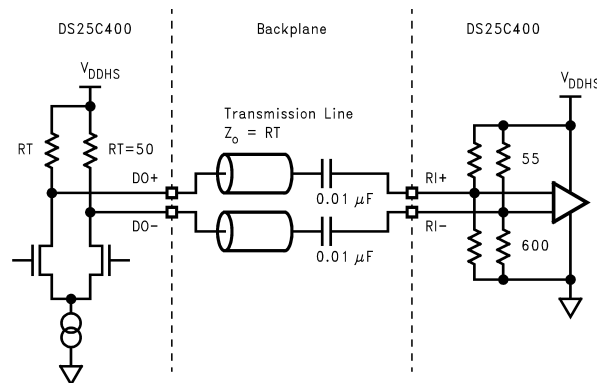


Figure 9. High Speed Interface — AC-Coupled Mode (EN_RAC = 1)

TERMINATION AT REFCLK

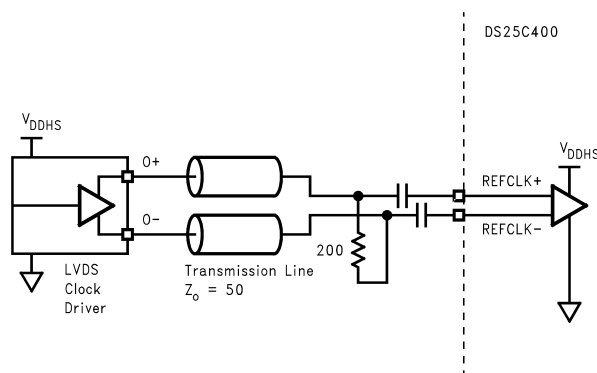


Figure 10. LVDS Terminations at REFCLK±

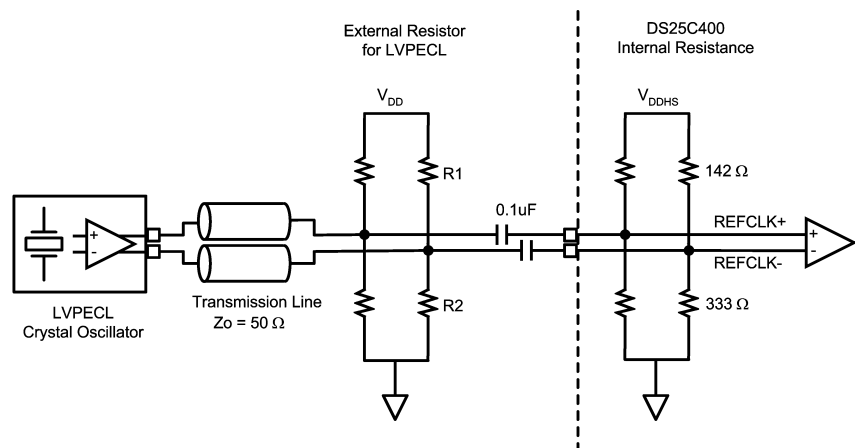


Figure 11. LVPECL Terminations at REFCLK±

The inputs to the DS25C400 have parallel termination resistors, thevenin equivalent to 100Ω single-ended. The value of R1 and R2 must be selected such that $V_T = V_{DD} - 2V$ and that the equivalent resistance is also 100Ω single-ended.

Termination values for different V_{DD} supply voltages:

For $V_{DD} = 2.5V$; R1 = 500 Ω; R2 = 125.5 Ω

For $V_{DD} = 3.3V$; R1 = 253 Ω; R2 = 165 Ω

For $V_{DD} = 5.0V$; R1 = 167 Ω; R2 = 250 Ω

TERMINATION AT THE PARALLEL I/O INTERFACE

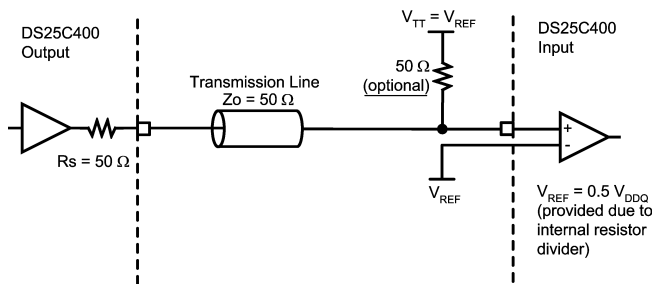


Figure 12. SSTL_18 Class 1, 1.8V HSTL or 1.8V LVCMOS I/O Termination

PIN DIAGRAM

1	2	3	4	5	6	7	8	9	10	11	12	13	14	15	16	17	18	19	20	21	22	
A	DGND	DGND	RD_A[9]	DGND	VDDQ	RD_A[2]	RBC0_A	TBC_A	DGND	VDDQ	TD_A(3)	AGND	VDDHS	REFCLK--	REFCLK+	EN_RAC	RES3	RES28	EQ0_C	VDDHS	EQ1_A	EQ0_A
B	DGND	VDDQ	VREF1	RD_A[8]	RD_A[5]	RD_A[1]	CDET_A	TD_A(9)	TD_A(6)	TD_A(4)	TD_A(2)	RES13	RES12	AGND	EN_PTN0	VDDHS	AGND	RES27	EQ0_D	EQ1_B	EQ0_B	AGND
C	RD_B[9]	RD_B[8]	VDDQ	RD_A[7]	RD_A[4]	DGND	VDDQ	TD_A(8)	DGND	DGND	TD_A(1)	RES25	EN_SLB	RES24	EN_PTN1	EN_HDR	EN_CDET	RES26	EQ1_C	AGND	AGND	VDDHS
D	VDDQ	RD_B[7]	RD_B[6]	RD_A[6]	RD_A[3]	RD_A[0]	RBC1_A	TD_A(7)	TD_A(5)	VDDIO	TD_A(0)	AGND	RES2	EN_10B	EN_ERR	EN_RBC	RES29	EQ1_D	RES4	DO_A+	VDDHS	VDDHS
E	RD_B[5]	DGND	RD_B[4]	RD_B[3]															AGND	DO_A-	DGND	RI_A+
F	RD_B[2]	VDDQ	RD_B[1]	RD_B[0]															DGND	DVDD	DVDD	RI_A-
G	RBC0_B	TBC_B	CDET_B	RBC1_B															VDDHS	RES8	VDDHS	VDDHS
H	TD_B[9]	TD_B[8]	DGND	TD_B[7]															AGND	RES9	AGND	RI_B-
J	TD_B[6]	TD_B[5]	VDDQ	DGND							DGND	DVDD	DVDD	RI_B+								
K	VDDIO	TD_B[4]	TD_B[3]	TD_B[2]							DGND	DO_B-	VDDHS	AGND								
L	VDDQ	TD_B[1]	TD_B[0]	DGND							DGND	DO_B+	AGND	RES5								
M	DGND	TD_C[1]	TD_C[0]	VDDQ							DGND	DO_C+	AGND	RES6								
N	TD_C[4]	TD_C[3]	TD_C[2]	VDDIO							DGND	DO_C-	VDDHS	AGND								
P	TD_C[6]	TD_C[5]	VDDQ	DGND							DGND	DVDD	DVDD	RI_C+								
R	TD_C[9]	TD_C[8]	DGND	TD_C[7]							AGND	RES10	AGND	RI_C-								
T	VDDQ	TBC_C	CDET_C	RBC1_C							VDDHS	RES11	VDDHS	VDDHS								
U	DGND	RBC0_C	RD_C[1]	RD_C[0]							DGND	DVDD	DVDD	RI_D-								
V	RD_C[4]	RD_C[3]	VDDQ	RD_C[2]							AGND	DO_D-	DGND	RI_D+								
W	DGND	RD_C[6]	DGND	RD_C[5]	RD_D[2]	RD_D[0]	TBC_D	TD_D[6]	DGND	TD_D[2]	PD1	RTERM	RBIASRX	ER_B	PSELO_A	PSEL1_B	PSELO_C	RES21	RES7	DO_D+	VDDHS	VDDHS
Y	RD_C[9]	RD_C[8]	RD_C[7]	RD_D[5]	RD_D[3]	VDDQ	DGND	TD_D[7]	VDDIO	TD_D[3]	VDDQ	DGND	VDDB	RBIASX	ER_C	DGND	VDDQ	RES23	RES17	AGND	AGND	VDDHS
AA	VDDQ	RD_D[9]	RD_D[7]	RD_D[6]	RD_D[4]	RBC0_D	CDET_D	TD_D[8]	TD_D[5]	TD_D[4]	TD_D[0]	PD0	VDDQ	DGND	ER_A	PSEL1_A	PSEL1_C	PSELO_D	RES16	RES19	RES20	AGND
AB	DGND	VREF2	RD_D[8]	VDDQ	DGND	RD_D[1]	RBC1_D	TD_D[9]	VDDQ	DGND	TD_D[1]	DGND	RTERM_RTN	RBIAS_RTN	RES1	ER_D	PSELO_B	PSEL1_D	RES15	RES18	RES22	DGND
1	2	3	4	5	6	7	8	9	10	11	12	13	14	15	16	17	18	19	20	21	22	

Figure 13. DS25C400TUT: 324-ball TE-PBGA (Top View)

PIN DESCRIPTIONS⁽¹⁾

Pin Name	Pin #	I/O, Type	Description
HIGH SPEED DIFFERENTIAL I/O			
DO_A+ DO_A-	D20 E20	O, CML	Inverting and non-inverting high speed CML differential outputs of the serializer, channel A. On-chip termination resistors connect from DO_A+ and DO_A- to VDDHS.
DO_B+ DO_B-	L20 K20	O, CML	Inverting and non-inverting high speed CML differential outputs of the serializer, channel B. On-chip termination resistors connect from DO_B+ and DO_B- to VDDHS.
DO_C+ DO_C-	M20 N20	O, CML	Inverting and non-inverting high speed CML differential outputs of the serializer, channel C. On-chip termination resistors connect from DO_C+ and DO_C- to VDDHS.

(1) I = Input
 O = Output
 Pull-Low = input pin is pulled-low by an internal resistor.
 Pull-High = input pin is pulled-high by an internal resistor.

PIN DESCRIPTIONS⁽¹⁾ (continued)

Pin Name	Pin #	I/O, Type	Description
DO_D+ DO_D-	W20 V20	O, CML	Inverting and non-inverting high speed CML differential outputs of the serializer, channel D. On-chip termination resistors connect from DO_D+ and DO_D- to V _{DDHS} .
RI_A+ RI_A-	E22 F22	I, CML	Inverting and non-inverting high speed differential inputs of the deserializer, channel A. On-chip termination resistors connect from RI_A+ and RI_A- to V _{DDHS} .
RI_B+ RI_B-	J22 H22	I, CML	Inverting and non-inverting high speed differential inputs of the deserializer, channel B. On-chip termination resistors connect from RI_B+ and RI_B- to V _{DDHS} .
RI_C+ RI_C-	P22 R22	I, CML	Inverting and non-inverting high speed differential inputs of the deserializer, channel C. On-chip termination resistors connect from RI_C+ and RI_C- to V _{DDHS} .
RI_D+ RI_D-	V22 U22	I, CML	Inverting and non-inverting high speed differential inputs of the deserializer, channel D. On-chip termination resistors connect from RI_D+ and RI_D- to V _{DDHS} .
DIFFERENTIAL REFERENCE CLOCK			
REFCLK+ REFCLK-	A15 A14	I, CML or AC coupled inputs	Inverting and non-inverting differential reference clock to the clock synthesizers for clock generation. A low jitter clock source should be connected to REFCLK±. The REFCLK± is shared by all four channels.
PARALLEL I/O DATA			
TD_A[0] TD_A[1] TD_A[2] TD_A[3] TD_A[4] TD_A[5] TD_A[6] TD_A[7] TD_A[8] TD_A[9]	D11 C11 B11 A11 B10 D9 B9 D8 C8 B8	I, SSTL_18, Pull-Low	Transmit data word for channel A. In the 10-bit mode, the 10-bit code-group at TD_A[0–9] is serialized with the internal 8b/10b encoder disabled. Bit 9 is the MSB. In the 8-bit mode, TD_A[0–7] is first converted into 10-bit code-group by the internal 8b/10b encoder before it is serialized. Bit 7 is the MSB. TD_A[8] is used as K-code select pin. When TD_A[8] is low, TD_A[0–7] is mapped to the corresponding 10-bit D-group. When TD_A[8] is high, TD_A[0–7] is mapped to the corresponding 10-bit K-group. The 8b/10b code group conversion is implemented in according to 802.3z standard.
TD_B[0] TD_B[1] TD_B[2] TD_B[3] TD_B[4] TD_B[5] TD_B[6] TD_B[7] TD_B[8] TD_B[9]	L3 L2 K4 K3 K2 J2 J1 H4 H2 H1	I, SSTL_18, Pull-Low	Transmit data word for channel B. In the 10-bit mode, the 10-bit code-group at TD_B[0–9] is serialized with the internal 8b/10b encoder disabled. Bit 9 is the MSB. In the 8-bit mode, TD_B[0–7] is first converted into 10-bit code-group by the internal 8b/10b encoder before it is serialized. Bit 7 is the MSB. TD_B[8] is used as K-code select pin. When TD_B[8] is low, TD_B[0–7] is mapped to the corresponding 10-bit D-group. When TD_B[8] is high, TD_B[0–7] is mapped to the corresponding 10-bit K-group.
TD_C[0] TD_C[1] TD_C[2] TD_C[3] TD_C[4] TD_C[5] TD_C[6] TD_C[7] TD_C[8] TD_C[9]	M3 M2 N3 N2 N1 P2 P1 R4 R2 R1	I, SSTL_18, Pull-Low	Transmit data word for channel C. In the 10-bit mode, the 10-bit code-group at TD_C[0–9] is serialized with the internal 8b/10b encoder disabled. Bit 9 is the MSB. In the 8-bit mode, TD_C[0–7] is first converted into 10-bit code-group by the internal 8b/10b encoder before it is serialized. Bit 7 is the MSB. TD_C[8] is used as K-code select pin. When TD_C[8] is low, TD_C[0–7] is mapped to the corresponding 10-bit D-group. When TD_C[8] is high, TD_C[0–7] is mapped to the corresponding 10-bit K-group.
TD_D[0] TD_D[1] TD_D[2] TD_D[3] TD_D[4] TD_D[5] TD_D[6] TD_D[7] TD_D[8] TD_D[9]	AA11 AB11 W10 Y10 AA10 AA9 W8 Y8 AA8 AB8	I, SSTL_18, Pull-Low	Transmit data word for channel D. In the 10-bit mode, the 10-bit code-group at TD_D[0–9] is serialized with the internal 8b/10b encoder disabled. Bit 9 is the MSB. In the 8-bit mode, TD_D[0–7] is first converted into 10-bit code-group by the internal 8b/10b encoder before it is serialized. Bit 7 is the MSB. TD_D[8] is used as K-code select pin. When TD_D[8] is low, TD_D[0–7] is mapped to the corresponding 10-bit D-group. When TD_D[8] is high, TD_D[0–7] is mapped to the corresponding 10-bit K-group.
TBC_A	A8	I, SSTL_18, Pull-Low	Transmit byte clock for channel A.
TBC_B	G2	I, SSTL_18, Pull-Low	Transmit byte clock for channel B.

PIN DESCRIPTIONS⁽¹⁾ (continued)

Pin Name	Pin #	I/O, Type	Description
TBC_C	T2	I, SSTL_18, Pull-Low	Transmit byte clock for channel C.
TBC_D	W7	I, SSTL_18, Pull-Low	Transmit byte clock for channel D.
RD_A[0] RD_A[1] RD_A[2] RD_A[3] RD_A[4] RD_A[5] RD_A[6] RD_A[7] RD_A[8] RD_A[9]	D6 B6 A6 D5 C5 B5 D4 C4 B4 A3	O, SSTL_18	Deserialized receive data word for channel A. In the 10-bit mode, RD_A[0–9] is the deserialized received data word in 10-bit code group. Bit 9 is the MSB. In the 8-bit mode, RD_A[0–7] is the deserialized received data byte. Bit 7 is the MSB. RD_A[9] is the 8b/10b error monitor. RD_A[8] is the K-group indicator. A low at RD_A[8] indicates RD_A[0–7] belongs to the D-group, while a high indicates it belongs to the K-group.
RD_B[0] RD_B[1] RD_B[2] RD_B[3] RD_B[4] RD_B[5] RD_B[6] RD_B[7] RD_B[8] RD_B[9]	F4 F3 F1 E4 E3 E1 D3 D2 C2 C1	O, SSTL_18	Deserialized receive data word for channel B. In the 10-bit mode, RD_B[0–9] is the deserialized received data word in 10-bit code group. Bit 9 is the MSB. In the 8-bit mode, RD_B[0–7] is the deserialized received data byte. Bit 7 is the MSB. RD_B[9] is the 8b/10b error monitor. RD_B[8] is the K-group indicator. A low at RD_B[8] indicates RD_B[0–7] belongs to the D-group, while a high indicates it belongs to the K-group.
RD_C[0] RD_C[1] RD_C[2] RD_C[3] RD_C[4] RD_C[5] RD_C[6] RD_C[7] RD_C[8] RD_C[9]	U4 U3 V4 V2 V1 W4 W2 Y3 Y2 Y1	O, SSTL_18	Deserialized receive data word for channel C. In the 10-bit mode, RD_C[0–9] is the deserialized received data word in 10-bit code group. Bit 9 is the MSB. In the 8-bit mode, RD_C[0–7] is the deserialized received data byte. Bit 7 is the MSB. RD_C[9] is the 8b/10b error monitor. RD_C[8] is the K-group indicator. A low at RD_C[8] indicates RD_C[0–7] belongs to the D-group, while a high indicates it belongs to the K-group.
RD_D[0] RD_D[1] RD_D[2] RD_D[3] RD_D[4] RD_D[5] RD_D[6] RD_D[7] RD_D[8] RD_D[9]	W6 AB6 W5 Y5 AA5 Y4 AA4 AA3 AB3 AA2	O, SSTL_18	Deserialized receive data word for channel D. In the 10-bit mode, RD_D[0–9] is the deserialized received data word in 10-bit code group. Bit 9 is the MSB. In the 8-bit mode, RD_D[0–7] is the deserialized received data byte. Bit 7 is the MSB. RD_D[9] is the 8b/10b error monitor. RD_D[8] is the K-group indicator. A low at RD_D[8] indicates RD_D[0–7] belongs to the D-group, while a high indicates it belongs to the K-group.
RBC0_A RBC1_A	A7 D7	O, SSTL_18	Complementary receive byte clocks for channel A.
RBC0_B RBC1_B	G1 G4	O, SSTL_18	Complementary receive byte clocks for channel B.
RBC0_C RBC1_C	U2 T4	O, SSTL_18	Complementary receive byte clocks for channel C.
RBC0_D RBC1_D	AA6 AB7	O, SSTL_18	Complementary receive byte clocks for channel D.
V _{REF1} V _{REF2}	B3 AB2	O, Analog	SSTL_18 reference voltages. Generated internally by a resistive divider from V _{DDQ} to DGND. A X7R 0.01 μF bypass capacitor should be connected from each V _{REF} pin to GND plane.
LINE STATUS			
CDET_A CDET_B CDET_C CDET_D	B7 G3 T3 AA7	O, SSTL_18 O, SSTL_18 O, SSTL_18 O, SSTL_18	Comma Detected. Logic high at CDET indicates that the internal Comma Detector detects a Comma bit sequence from the incoming bit stream. The serial to parallel converter is aligned to the proper 10-bit word boundary.

PIN DESCRIPTIONS⁽¹⁾ (continued)

Pin Name	Pin #	I/O, Type	Description															
ER_A ER_B ER_C ER_D	AA15 W14 Y15 AB16	O, SSTL_18 O, SSTL_18 O, SSTL_18 O, SSTL_18	PRBS Error when EN_ERR is low, 8b/10b disparity or code violation error when EN_ERR is high. Upon detection of an error, ER will go high for one word period.															
BIAS REFERENCE																		
RTERM RTERM_RTN	W12 AB13	I, Analog I, Analog	An external resistor is connected from RTERM to RTERM_RTN for use as reference to control process variation of the internal on-chip terminations. An external resistor of $249\Omega \pm 1\%$ provides an on-chip termination of $50\Omega \pm 10\%$.															
RbiasTx RbiasRx RBIAS_RTN	Y14 W13 AB14	I, Analog I, Analog I, Analog	An external resistor is connected from RbiasTx to RBIAS_RTN to set up the proper internal bias Tx current. An external resistor is connected from RbiasRx to RBIAS_RTN to set up the proper internal bias Rx current. The external resistor should be $6.3\text{ k}\Omega \pm 1\%$.															
CONFIGURATION CONTROL—AFFECT ALL FOUR CHANNELS																		
EN_CDET	C17	I, CMOS, Pull-High	Enable Comma Detector to align the correct bit boundary of the 10-bit word. 1 = Enables Comma Detector. 0 = Disable Comma Detector.															
EN_10B	D14	I, CMOS, Pull-High	Enable 10-bit mode. 1 = Selects 10-bit mode. Disables internal 8b/10b encoder and decoder. 0 = Selects 8-bit mode. Enables the internal 8b/10b encoder and decoder.															
EN_HDR	C16	I, CMOS, Pull-High	0 = Selects low-data-rate mode for the serdes. 1 = Selects high-data-rate mode for the serdes.															
EN_RBC	D16	I, CMOS, Pull-Low	0 = RBC1 and RBC0 strobe even and odd data word at RD[0–9]. 1 = Data words at RD[0–9] are strobed by RBC1.															
EN_RAC	A16	I, CMOS, Pull-High	0 = Connects internal CML input 50Ω terminations from RI+ and RI– to V_{DDHS} . 1 = Configure internal termination resistors to form an internal bias network for RI+ and RI– when AC coupling is used. The divider forms a parallel termination of 50Ω . Please refer to Figure 8 and Figure 9 .															
EN_SLB	C13	I, CMOS, Pull-Low	Local serial loopback. 1 = Enables internal local serial loopback. 0 = Disables internal local serial loopback.															
EN_PT EN_PTNO	C15 B15	I, CMOS, Pull-Low	Select internal test pattern generator.															
			<table border="1"> <thead> <tr> <th>EN_PT N1</th> <th>EN_PT N0</th> <th></th> </tr> </thead> <tbody> <tr> <td>0</td> <td>0:</td> <td>Disable internal test pattern generator for normal operation.</td> </tr> <tr> <td>0</td> <td>1:</td> <td>Enable internal PRBS = $2^7 - 1$ pattern generator.</td> </tr> <tr> <td>1</td> <td>0:</td> <td>Enable D21.5 - Alternating 1_0 pattern.</td> </tr> <tr> <td>1</td> <td>1:</td> <td>Enable repeating K28.5 pattern.</td> </tr> </tbody> </table>	EN_PT N1	EN_PT N0		0	0:	Disable internal test pattern generator for normal operation.	0	1:	Enable internal PRBS = $2^7 - 1$ pattern generator.	1	0:	Enable D21.5 - Alternating 1_0 pattern.	1	1:	Enable repeating K28.5 pattern.
EN_PT N1	EN_PT N0																	
0	0:	Disable internal test pattern generator for normal operation.																
0	1:	Enable internal PRBS = $2^7 - 1$ pattern generator.																
1	0:	Enable D21.5 - Alternating 1_0 pattern.																
1	1:	Enable repeating K28.5 pattern.																
EN_ERR	D15	I, CMOS, Pull-Low	Enable and synchronize the internal PRBS error checker in the receivers, and select types of errors detected. 0 = Enables internal PRBS error checker. Receiver expects pseudo-random pattern ($2^7 - 1$) bit stream. ER_n pin only reports any PRBS error detected. EN_ERR must be pulsed high then low with a minimum pulse period of $10\ \mu\text{s}$ to synchronize the internal PRBS checker. 1 = Disable internal PRBS error checker for normal operation. ER_n pin only reports 8b/10b code error or disparity error detected.															
CONFIGURATION CONTROL—AFFECT INDIVIDUAL CHANNEL																		
PSEL0_A PSEL1_A	W15 AA16	I, CMOS, Pull-Low	Pre-emphasis select for channel A CML driver. Select one of the three pre-emphasis current-drive settings for output drivers. See FUNCTIONAL DESCRIPTION . PSEL0_A and PSEL1_A should be tied to DGND if no pre-emphasis is needed.															
PSEL0_B PSEL1_B	AB17 W16	I, CMOS, Pull-Low	Pre-emphasis select for channel B CML driver. Select one of the three pre-emphasis current-drive settings for output drivers. See FUNCTIONAL DESCRIPTION . PSEL0_B and PSEL1_B should be tied to DGND if no pre-emphasis is needed.															
PSEL0_C PSEL1_C	W17 AA17	I, CMOS, Pull-Low	Pre-emphasis select for channel C CML driver. Select one of the three pre-emphasis current-drive settings for output drivers. See FUNCTIONAL DESCRIPTION . PSEL0_C and PSEL1_C should be tied to DGND if no pre-emphasis is needed.															

PIN DESCRIPTIONS⁽¹⁾ (continued)

Pin Name	Pin #	I/O, Type	Description															
PSEL0_D PSEL1_D	AA18 AB18	I, CMOS, Pull-Low	Pre-emphasis select for channel D CML driver. Select one of the three pre-emphasis current-drive settings for output drivers. See FUNCTIONAL DESCRIPTION . PSEL0_D and PSEL1_D should be tied to DGND if no pre-emphasis is needed.															
EQ0_A EQ1_A	A22 A21	I, CMOS, Pull-Low	Receive equalization select for channel A. Select one of the three equalization filters to compensate for transmission medium's frequency response. See FUNCTIONAL DESCRIPTION . EQ0_A and EQ1_A should be tied to DGND if no equalization is needed.															
EQ0_B EQ1_B	B21 B20	I, CMOS, Pull-Low	Receive equalization select for channel B. Select one of the three equalization filters to compensate for transmission medium's frequency response. See FUNCTIONAL DESCRIPTION . EQ0_B and EQ1_B should be tied to DGND if no equalization is needed.															
EQ0_C EQ1_C	A19 C19	I, CMOS, Pull-Low	Receive equalization select for channel C. Select one of the three equalization filters to compensate for transmission medium's frequency response. See FUNCTIONAL DESCRIPTION . EQ0_C and EQ1_C should be tied to DGND if no equalization is needed.															
EQ0_D EQ1_D	B19 D18	I, CMOS, Pull-Low	Receive equalization select for channel D. Select one of the three equalization filters to compensate for transmission medium's frequency response. See FUNCTIONAL DESCRIPTION . EQ0_D and EQ1_D should be tied to DGND if no equalization is needed.															
PD0 PD1	AA12 W11	I, CMOS, Pull-Low	Power down control signals. <table border="1" data-bbox="662 863 1479 1035"> <thead> <tr> <th>PD1</th> <th>PD0</th> <th></th> </tr> </thead> <tbody> <tr> <td>0</td> <td>0</td> <td>All 4 channels powered down</td> </tr> <tr> <td>0</td> <td>1</td> <td>Only Channel A powered up</td> </tr> <tr> <td>1</td> <td>0</td> <td>Channels A and B powered up</td> </tr> <tr> <td>1</td> <td>1</td> <td>All 4 channels powered up</td> </tr> </tbody> </table>	PD1	PD0		0	0	All 4 channels powered down	0	1	Only Channel A powered up	1	0	Channels A and B powered up	1	1	All 4 channels powered up
PD1	PD0																	
0	0	All 4 channels powered down																
0	1	Only Channel A powered up																
1	0	Channels A and B powered up																
1	1	All 4 channels powered up																
RESERVED TEST PINS																		
RES1	AB15	I, CMOS, Pull-Low	Tie this pin to DGND or leave open.															
RES2	D13	I, CMOS, Pull-Low	Tie this pin to DGND or leave open.															
RES3	A17	I, CMOS, Pull-Low	Tie this pin to DGND or leave open.															
RES4 RES5 RES6 RES7 RES8 RES9 RES10 RES11	D19 L22 M22 W19 G20 H20 R20 T20	O, Analog	Leave pins open (no connection).															
RES12	B13	I, CMOS, Pull-Low	Tie this pin to DGND or leave open.															
RES13	B12	I, CMOS, Pull-Low	Tie this pin to DGND or leave open.															
RES15	AB19	I, CMOS, Pull-Low	Leave pin open (no connection).															
RES16	AA19	I, CMOS, Pull-Low	Leave pin open (no connection).															
RES17	Y19	I, CMOS, Pull-Low	Leave pin open (no connection).															
RES18	AB20	I, CMOS, Pull-Low	Leave pin open (no connection).															
RES19	AA20	I, CMOS, Pull-Low	Leave pin open (no connection).															
RES20	AA21	I, Power/ I, CMOS, Pull-High	Tie this pin to D _{VDD} or leave open.															
RES21	W18	I, Power/ I, CMOS, Pull-High	Tie this pin to D _{VDD} or leave open.															
RES22	AB21	I, Power/ I, CMOS, Pull-High	Leave pin open (no connection).															
RES23	Y18	I, Power/ I, CMOS, Pull-High	Leave pin open (no connection).															
RES24	C14	I, CMOS, Pull-Low	Tie this pin to DGND or leave open.															
RES25	C12	I, CMOS, Pull-Low	Tie this pin to D _{VDD} .															

PIN DESCRIPTIONS⁽¹⁾ (continued)

Pin Name	Pin #	I/O, Type	Description
RES26 RES27 RES28 RES29	C18 B18 A18 D17	O, SSTL_18 O, SSTL_18 O, SSTL_18 O, SSTL_18	Leave pin open (no connection).
POWER			
V _{DDQ}	B2, C3, D1, F2, J3, L1, M4, P3, T1, V3, AA1, AB4, Y6, AB9, Y11, AA13, Y17, A10, C7, A5	I, Power	V _{DDQ} = 1.8V ±5%. It powers the SSTL interface. A X7R 0.01 μF bypass capacitor should be connected from each V _{DDQ} pin to DGND plane.
DV _{DD}	U20, U21, P20, P21, J20, J21, F20, F21	I, Power	DV _{DD} = 1.8V ±5%. Power to internal logic. A X7R 0.01 μF bypass capacitor should be connected from each DV _{DD} pin to DGND plane.
V _{DDHS}	Y22, W21, W22, T19, T21, T22, N21, M19, K21, G19, G21, G22, D21, D22, C22, A20, B16, A13	I, Power	V _{DDHS} = 2.5V ±5%. It powers the high speed CML I/O circuitry, the analog PLL circuitry, and reference clock buffer. A X7R 0.01 μF bypass capacitor should be connected from each V _{DDHS} pin to AGND plane.
V _{DDIO}	K1, N4, Y9, D10	I, Power	V _{DDIO} = 2.5V ±5%. Power to Parallel I/O input buffers. A X7R 0.01 μF bypass capacitor should be connected from each V _{DDIO} pin to DGND plane.
V _{DDB}	Y13	I, Power	V _{DDB} = 2.5V ±5%. Power to BIAS circuit. A X7R 0.01 μF bypass capacitor should be connected from each V _{DDB} pin to DGND plane.
GROUND			
DGND	C10, J4, P4, W9, A1, B1, A2, E2, H3, L4, M1, R3, U1, W1, W3, AB1, AB5, Y7, AB10, Y12, AA14, Y16, AB22, A4, A9, C9, C6, AB12, V21, U19, P19, N19, K19, J19, F19, E21, J[9–11], K[9–11], L[9–11], M[9–11], N[9–11], P[9–11]	I, Ground	Digital ground pins. DGND should be tied to a solid ground plane through a low inductive path.

PIN DESCRIPTIONS⁽¹⁾ (continued)

Pin Name	Pin #	I/O, Type	Description
AGND	A12, B14, B17, B22, C20, C21, D12, E19, H19, H21, K22, L19, L21, M21, N22, R19, R21, V19, Y20, Y21, AA22, J[12–14], K[12–14], L[12–14], M[12–14], N[12–14], P[12–14]	I, Ground	Analog ground pins. AGND should be tied to a solid ground plane through a low inductive path.

FUNCTIONAL DESCRIPTION

The serial interface is optimized for backplane applications with user selectable pre-emphasis at driver and/or equalization filters at receivers. A typical point-to-point backplane link consists of two high-speed connectors (such as Teradyne HSD family) and 20 inches 100 Ω coupled differential traces usually implemented with strip-lines on FR4 or Getek board material.

REFERENCE CLOCK

Each of the four serializers is clocked by a high speed clock derived from its own internal low jitter clock synthesizer, which is phase-locked to the input clock at REFCLK \pm . No external components are required for the clock synthesizing PLL's. REFCLK \pm should be a differential CML, or AC coupled differential clock. Any termination resistors should be located close to the REFCLK \pm input pins. REFCLK \pm should be connected to a balanced differential clock from a crystal source or clock driver.

The clock synthesizers are low pass in nature. REFCLK jitter above 10 MHz will be attenuated by the Tx PLL. Any low frequency jitter component at REFCLK \pm will be transferred directly to DO \pm . The Tx output jitter specification is relaxed below a frequency of bit rate/1,667 because the Rx PLL can track very low frequency jitter. To ensure good output jitter performance, REFCLK should be free from excessive low frequency jitter and have random jitter less than 30–40 ps p-p. The REFCLK \pm input amplitude should be a minimum of 1 V_{p-p} differential for the best Tx output jitter performance.

The reference clock input has an internal bias network that sets its common mode voltage to 1.75V. The REFCLK differential input impedance is 200 Ω . To terminate into 100 Ω differential, an additional external 200 Ω termination impedance is required. If the common mode voltage of the driver does not match the REFCLK common mode voltage coupling capacitors can be used to remove the driver DC voltage. This AC coupled mode allows the REFCLK to be interfaced to LVDS, PECL, LVPECL, LVEP, PECL, and other differential logic levels. See [Figure 10](#) and [Figure 11](#).

The frequency range of REFCLK \pm is 106.25–125 MHz to support data rate of 1.0625–1.25 Gbps or 2.125–2.5 Gbps at high data rate mode. The frequency accuracy should be better than ± 100 ppm.

REFCLK (RES3=0)	Transmit and Receive Data Rate (Low Data Rate Mode, EN_HDR=0)	Transmit and Receive Data Rate (High Data Rate Mode, EN_HDR=1)
106.25 MHz	1.0625 Gbps	2.125 Gbps
125.00 MHz	1.25 Gbps	2.500 Gbps

TRANSMIT PARALLEL INPUT DATA

Each serializer accepts parallel transmit data at TD[0–9], clocked in by an input clock TBC. TBC must be synchronized to REFCLK ± 100 ppm. An input FIFO is used to compensate for the phase difference between TBC and the internal byte clock that samples TD[0–9].

When the 8-bit mode is enabled (EN_10B=0), an internal 8b/10b encoder is activated to convert TD[0–8] into the corresponding 10-bit code group. TD[0–7] is the data byte, while TD[8] is used as the D-group or K-group qualifier. When 10-bit mode is used (EN_10B=1), the serializer expects coded 10-bit data at TD[0–9], with its internal 8b/10b encoder disabled.

The serializer can be configured in the high-data-rate mode or low-data-rate mode determined by EN_HDR pin. In the high-data-rate mode (EN_HDR=1), source-synchronous switching is used. TD[0–9] transitions are synchronous to both the rising and falling edges of TBC. The frequency of TBC is thus half the transfer rate frequency at TD[0–9]. See [Figure 5](#).

In the low-data-rate mode, (EN_HDR=0), the serializer runs at half data rate. TD[0–9] is clocked in at the falling strobe edge of TBC. See [Figure 4](#).

REFCLK (RES3=0)	TBC at Low-Data-Rate Mode (EN_TDR=0)	Transfer Rate at TD[0–9] = Line Rate / 10	Line Rate at DO±
106.25 MHz	106.25 MHz	106.25 Mword/s	1.0625 Gbps
125.0 MHz	125 MHz	125 Mword/s	1.25 Gbps

REFCLK (RES3=0)	TBC at High-Data-Rate Mode (EN_HDR=1)	Transfer Rate at TD[0–9] = Line Rate / 10	Line Rate at DO±
106.25 MHz	106.25 MHz	212.5 Mword/s	2.125 Gbps
125.0 MHz	125 MHz	250 Mword/s	2.50 Gbps

The internal 10-bit coded data word is serialized and clocked out at DO±. Bit 0 (LSB) of the 10-bit code-group is shifted out first.

TD[0–9] and TBC are single-ended SSTL logic. They expect input signal swing of 1.8V, and switch at approximately 0.9V.

TRANSMIT SERIAL DATA OUTPUT

The serialized data bit stream is output at DO±, driven by a differential current mode logic (CML) driver. Both DO+ and DO– are terminated with on-chip resistors to V_{DDHS} . The values of the internal termination resistors are tightly controlled to $50\Omega \pm 10\%$.

With an external load of 50Ω to V_{DDHS} or AC coupled to GND, the driver provides single-ended voltage swing of 533 mV nominal, with a common mode voltage of about ($V_{DDHS} - 0.27V$). To compensate against edge degradation due to bandwidth-limited transmission medium, the driver has 3 selectable steps of pre-emphasis providing additional current drive for one bit period following a data level transition. The pre-emphasis improves signal quality at the receiving end of the transmission medium and enhances error rate performance of the downstream receiver.

PSEL1	PSEL0	Descriptions
0	0	Pre-emphasis disabled. Drive current = 24 mA.
0	1	Pre-emphasis enabled. Drive current = 29.3 mA at first bit after data transition.
1	0	Pre-emphasis enabled. Drive current = 34.7 mA at first bit after data transition.
1	1	Pre-emphasis enabled. Drive current = 39.7 mA at first bit after data transition.

RECEIVE SERIAL DATA INPUT

The receiver front-end is a limiting amplifier with on-chip CML terminations from RI+ and RI– to V_{DDHS} . The values of the internal termination resistors are tightly controlled to $50\Omega \pm 10\%$. The limiting amplifier is capable to work with minimum input differential voltage of 200 mV_{p-p} across RI+ and RI–.

When serial bit stream is AC coupled to RI±, the internal termination resistors can be configured as a divider to provide DC bias to RI+ and RI–, and form an equivalent 50Ω parallel termination. EN_RAC is set to logic high to enable the receiver's bias network.

EQUALIZATION

The receiver front-end provides 3 steps of equalization filter to improve the eye opening of the input data at RI±. The equalization filter is a first order, designed to equalize transmission loss and reduce ISI for long board traces in a backplane.

EQ1	EQ0	Descriptions
0	0	Equalization disabled
0	1	Equalization filter's zero location set at about 800 MHz
1	0	Equalization filter's zero location set at about 500 MHz
1	1	Equalization filter's zero location set at about 400 MHz

DESERIALIZER

The clock and data recovery PLL accepts serial NRZ re-shaped bit stream from the receiver front-end. It recovers clock from the incoming bit stream, and re-times the data. It is optimized to work with 10-bit coded bit stream to maintain DC balance and ensure enough edge transitions to maintain synchronization. The data rate of the PLL can be 2.125–2.5 Gbps or 1.0625–1.25 Gbps determined by REFCLK± and EN_HDR. In the absence of input bit stream, the PLL is centered to the internal local transmit clock. It is capable to re-time data with maximum frequency tolerance of ±200 ppm from its local transmit clock. No external component is needed for the PLL.

The re-timed bit stream is deserialized into a 10-bit word clocked by the recovered clock. In the 10-bit mode (EN_10B=1), the parallel recovered data code-group is output at RD[0–9]. In the 8-bit mode (EN_10B=0), the internal 8b/10b decoder is enabled to convert the 10-bit code-group into the corresponding 8-bit data byte and output at RD[0–7]. RD[8] is used as qualifier to indicate if RD[0–7] belongs to the D-group (RD8=0), or K-group (RD8=1). RD[9] is used as a second error pin that is only used to flag 8b/10b code and disparity errors.

Two recovered byte clock RBC0 and RBC1 are available for clocking the parallel data bus RD[0–9]. RBC0 and RBC1 are 180° out of phase. Users can latch even- and odd-numbered data word at RD[0–9] with the rising edge of successive RBC1 and RBC0. RBC0 and RBC1 have half the transfer rate frequency. In the low-data-rate mode (EN_HDR=0), the deserializer runs at half data rate.

When EN_RBC=1, RBC frequency is same as the bus transfer rate. Each rising edge of RBC1 strobes data word at RD[0–9]. See [Figure 7](#).

RBC1 (EN_RBC=1) See Figure 7	RBC0, RBC1 (EN_RBC=0) See Figure 6	Transfer Rate at RD[0–9] = Line Rate / 10	Line Rate at RI± (High Data Rate Mode)
212.5 MHz	106.25 MHz	212.5 Mword/s	2.125 Gbps
250.0 MHz	125 MHz	250 Mword/s	2.50 Gbps

RBC1 (EN_RBC=1)	RBC0, RBC1 (EN_RBC=0)	Transfer Rate at RD[0–9] = Line Rate / 10	Line Rate at DO± (Low Data Rate Mode)
106.25 MHz	53.125 MHz	106.25 Mword/s	1.0625 Gbps
125 MHz	62.5 MHz	125 Mword/s	1.25 Gbps

When parallel data is serialized, the character alignment is lost. The Deserializer uses Comma character detection to establish the correct bit boundary of the 10-bit word. This process is called “code-group alignment”. When a Comma character is detected, the CDET indicator is pulsed high, the corresponding Comma character is output at RD[0–9] (10-bit mode), or RD[0–8] (8-bit mode). During the alignment, RBC1 is stretched and the rising edge of RBC1 is aligned with the Comma character. The code-group alignment is enabled by EN_CDET active. When EN_CDET is low, the CDET indicator still functions, but no alignment is initiated when a comma character is detected.

DS25C400 detects both the +K28.5 and –K28.5 comma characters. These are unique binary patterns that cannot occur in valid data. A bit error could produce a misaligned comma character. This would cause an improper word realignment, if comma detect is enabled. Any higher order comma detect function that required the detection of multiple misaligned comma characters before initiating word realignment must be added externally by the user.

SERIAL LOCAL LOOPBACK

DS25C400 provides an internal loopback of the serial transmit data to the receiver's limiting amplifier of each channel. EN_SLB = 1 activates serial local loopback path for all four channels. DO± are disabled with output current = 0, and incoming data at RI± are ignored. Self test can be performed by comparing the parallel recovered output data at RD[0–9] to the parallel transmit input data at TD[0–9]. EN_LOS pin must be tied high (disabled LOS control of RD[0-9]) during serial local loopback testing. For normal data transmission operation using cable or PCB trace, set EN_SLB = 0.

BIST

DS25C400 has a built-in 2^7-1 PRBS (pseudo-random bit sequence) generator, an alternating 1_0 generator, and a repeating $\pm K28.5$ pattern, selected by EN_PTNO and EN_PTN1. When internal pattern generator is enabled, the parallel input data at TD[0–9] are ignored. The Serializer converts the test pattern into serial bit stream at DO \pm .

The DS25C400 has a built-in 2^7-1 PRBS checker in the Deserializer data path. It is initialized when EN_ERR is pulsed high then low with a minimum period of 10 μ s. This will allow the internal error checker to achieve synchronization with the incoming (2^7-1) bit stream. With EN_ERR=0, ER_n pulses high for 10-bit period if the PRBS checker detects an error in the receive data word. It provides a simple mechanism to monitor the Deserializer's error rate performance by measuring the number of pulses at ER_n pin over a period of time. When EN_ERR is left high, ER_n will flag 8b/10b disparity and code violation errors instead of PRBS errors. When the 8b/10b mode is activated, RD[9] becomes a second error pin that flags 8b/10b errors.

The built-in PRBS generator and error checker, together with the internal loopback offer very powerful high speed self-test capability for the DS25C400.

POR

Upon application of power, the DS25C400 generates an internal power-on reset. RBC0 and RBC1 are at unknown state. The POR circuit monitors both the 2.5V supply and the 1.8V supply. The 2.5V POR threshold voltage is approximately 2.05V from low to high and approximately 1.95V from high to low. There is about 100mV of hysteresis for this threshold. The 1.8V POR threshold is about 1.1V with 100mV of hysteresis. When the POR circuit is active, the PLL VCO capacitors are discharged to allow correct operation when a good power level is again established. Furthermore, the POR resets the internal digital counters to correct settings to be in a ready condition when supplies have been corrected. A termination resistor calibration sequence will also be executed.

RTERM

During power-on reset, the on-chip input termination resistors at RI \pm and the termination resistors at DO \pm are adjusted at power up and compared to the current through an external resistor connected from RTERM pin to RTERM_RTN. The on-chip termination resistors can be maintained to within a $\pm 10\%$. The external resistor at RTERM should be $249\Omega \pm 1\%$ for 50Ω on-chip terminations.

POWER DOWN

There are two control lines that control the power down modes, PD0 and PD1. With PD0=0 and PD1=0 all four channels are powered down, which subsequently power down the reference clock buffers as well as the bias circuits. This mode will allow measuring an I_{DDQ} or leakage current test. To properly measure the I_{DDQ} , the following sequence must be followed: first power up the device, then apply the reference clock and finally set the device to power down mode (PD0=0, PD1=0) and remove the reference clock. The other three states allow one, two, or four channels to be powered up. The reference clock buffers and bias circuits are powered up in these states.

PD1	PD0	IDD _{2.5}	IDD _{1.8}	Description
0	0	TBD	TBD	All 4 channels powered down
0	1	TBD	TBD	Only Channel A powered up
1	0	TBD	TBD	Channels A and B powered up
1	1	TBD	TBD	All 4 channels powered up

POWER SEQUENCE REQUIREMENT

The 2.5 V supplies (V_{DDHS} , V_{DDIO} and V_{DDB}) should be supplied, followed by the 1.8 V supplies. All the 2.5 V supplies should be tied to a common power plane.

REVISION HISTORY

Changes from Revision A (April 2013) to Revision B	Page
• Changed layout of National Data Sheet to TI format	21

IMPORTANT NOTICE

Texas Instruments Incorporated and its subsidiaries (TI) reserve the right to make corrections, enhancements, improvements and other changes to its semiconductor products and services per JESD46, latest issue, and to discontinue any product or service per JESD48, latest issue. Buyers should obtain the latest relevant information before placing orders and should verify that such information is current and complete. All semiconductor products (also referred to herein as "components") are sold subject to TI's terms and conditions of sale supplied at the time of order acknowledgment.

TI warrants performance of its components to the specifications applicable at the time of sale, in accordance with the warranty in TI's terms and conditions of sale of semiconductor products. Testing and other quality control techniques are used to the extent TI deems necessary to support this warranty. Except where mandated by applicable law, testing of all parameters of each component is not necessarily performed.

TI assumes no liability for applications assistance or the design of Buyers' products. Buyers are responsible for their products and applications using TI components. To minimize the risks associated with Buyers' products and applications, Buyers should provide adequate design and operating safeguards.

TI does not warrant or represent that any license, either express or implied, is granted under any patent right, copyright, mask work right, or other intellectual property right relating to any combination, machine, or process in which TI components or services are used. Information published by TI regarding third-party products or services does not constitute a license to use such products or services or a warranty or endorsement thereof. Use of such information may require a license from a third party under the patents or other intellectual property of the third party, or a license from TI under the patents or other intellectual property of TI.

Reproduction of significant portions of TI information in TI data books or data sheets is permissible only if reproduction is without alteration and is accompanied by all associated warranties, conditions, limitations, and notices. TI is not responsible or liable for such altered documentation. Information of third parties may be subject to additional restrictions.

Resale of TI components or services with statements different from or beyond the parameters stated by TI for that component or service voids all express and any implied warranties for the associated TI component or service and is an unfair and deceptive business practice. TI is not responsible or liable for any such statements.

Buyer acknowledges and agrees that it is solely responsible for compliance with all legal, regulatory and safety-related requirements concerning its products, and any use of TI components in its applications, notwithstanding any applications-related information or support that may be provided by TI. Buyer represents and agrees that it has all the necessary expertise to create and implement safeguards which anticipate dangerous consequences of failures, monitor failures and their consequences, lessen the likelihood of failures that might cause harm and take appropriate remedial actions. Buyer will fully indemnify TI and its representatives against any damages arising out of the use of any TI components in safety-critical applications.

In some cases, TI components may be promoted specifically to facilitate safety-related applications. With such components, TI's goal is to help enable customers to design and create their own end-product solutions that meet applicable functional safety standards and requirements. Nonetheless, such components are subject to these terms.

No TI components are authorized for use in FDA Class III (or similar life-critical medical equipment) unless authorized officers of the parties have executed a special agreement specifically governing such use.

Only those TI components which TI has specifically designated as military grade or "enhanced plastic" are designed and intended for use in military/aerospace applications or environments. Buyer acknowledges and agrees that any military or aerospace use of TI components which have **not** been so designated is solely at the Buyer's risk, and that Buyer is solely responsible for compliance with all legal and regulatory requirements in connection with such use.

TI has specifically designated certain components as meeting ISO/TS16949 requirements, mainly for automotive use. In any case of use of non-designated products, TI will not be responsible for any failure to meet ISO/TS16949.

Products

Audio	www.ti.com/audio
Amplifiers	amplifier.ti.com
Data Converters	dataconverter.ti.com
DLP® Products	www.dlp.com
DSP	dsp.ti.com
Clocks and Timers	www.ti.com/clocks
Interface	interface.ti.com
Logic	logic.ti.com
Power Mgmt	power.ti.com
Microcontrollers	microcontroller.ti.com
RFID	www.ti-rfid.com
OMAP Applications Processors	www.ti.com/omap
Wireless Connectivity	www.ti.com/wirelessconnectivity

Applications

Automotive and Transportation	www.ti.com/automotive
Communications and Telecom	www.ti.com/communications
Computers and Peripherals	www.ti.com/computers
Consumer Electronics	www.ti.com/consumer-apps
Energy and Lighting	www.ti.com/energy
Industrial	www.ti.com/industrial
Medical	www.ti.com/medical
Security	www.ti.com/security
Space, Avionics and Defense	www.ti.com/space-avionics-defense
Video and Imaging	www.ti.com/video

TI E2E Community

e2e.ti.com