

## CLC409 Very Wideband, Low Distortion Monolithic Op Amp

Check for Samples: [CLC409](#)

### FEATURES

- 350MHz Small Signal Bandwidth
- -65/-72dBc 2nd/3rd Harmonics (20MHz)
- Low Noise
- 8ns Settling to 0.1%
- 1200V/ $\mu$ s Slew Rate
- 13.5mA Supply Current ( $\pm$ 5V)
- 60mA Output Current

### APPLICATIONS

- Flash A/D Driver
- D/A Transimpedance Buffer
- Wide Dynamic Range IF Amp
- Radar/Communication Receivers
- DDS Post-Amps
- Wideband Inverting Summer
- Line Driver

### DESCRIPTION

The CLC409 is a very wideband, DC coupled monolithic operational amplifier designed specifically for wide dynamic range systems requiring exceptional signal fidelity. Benefiting from TI's current feedback architecture, the CLC409 offers a gain range of  $\pm$ 1 to  $\pm$ 10 while providing stable, oscillation free operation without external compensation, even at unity gain.

With its 350MHz small signal bandwidth ( $V_{OUT} = 2V_{PP}$ ), 10-bit distortion levels through 20MHz ( $R_L = 100\Omega$ ), 8-bit distortion levels through 60MHz, 2.2nV/ $\sqrt{\text{Hz}}$  input referred noise and 13.5mA supply current, the CLC409 is the ideal driver or buffer for high speed flash A/D and D/A converters.

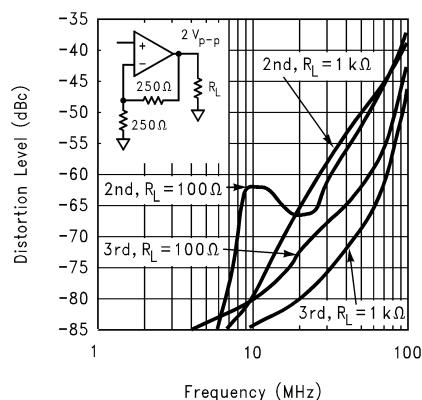
Wide dynamic range systems such as radar and communication receivers requiring a wideband amplifier offering exceptional signal purity will find the CLC409's low input referred noise and low harmonic and intermodulation distortion make it an attractive high speed solution.

Constructed using an advanced, complimentary bipolar process and TI's proven current feedback architecture, the CLC409 is available in several versions to meet a variety of requirements.

### Enhanced Solutions (Military/Aerospace)

SMD Number: 5962-92034

Space level versions also available.



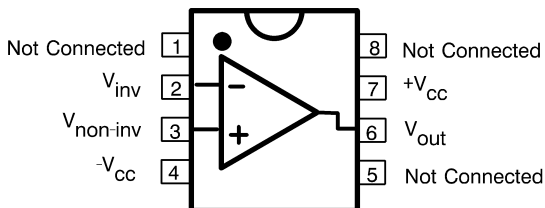
**Figure 1. Harmonic Distortion vs. Load and Frequency**



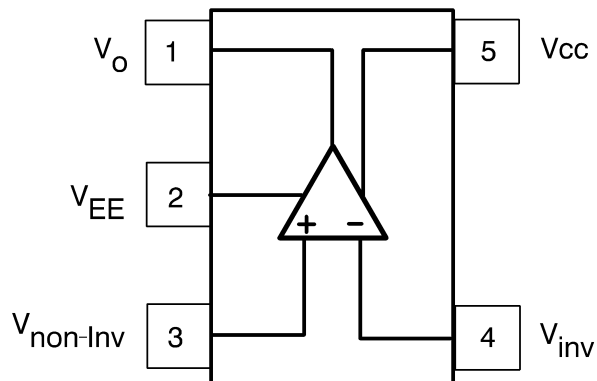
Please be aware that an important notice concerning availability, standard warranty, and use in critical applications of Texas Instruments semiconductor products and disclaimers thereto appears at the end of this data sheet.

All trademarks are the property of their respective owners.

## CONNECTION DIAGRAM



**Figure 2. PDIP & SOIC Pinout**  
See Package Numbers P and D



**Figure 3. SOT-23 Pinout**  
See Package Number DBV



These devices have limited built-in ESD protection. The leads should be shorted together or the device placed in conductive foam during storage or handling to prevent electrostatic damage to the MOS gates.

## ABSOLUTE MAXIMUM RATINGS<sup>(1)(2)</sup>

Supply Voltage ( $V_{CC}$ )		$\pm 7V$
$I_{OUT}$	Output is short circuit protected to ground, but maximum reliability will be maintained if $I_{OUT}$ does not exceed...	60mA
Common Mode Input Voltage		$\pm V_{CC}$
Differential Input Voltage		10V
Junction Temperature		+150°C
Operating Temperature Range		-40°C to +85°C
Storage Temperature Range		-65°C to +150°C
Lead Solder Duration (+300°C)		10 sec
ESD rating (human body model)		1000V

- (1) "Absolute Maximum Ratings" are those values beyond which the safety of the device cannot be ensured. They are not meant to imply that the devices should be operated at these limits. The [ELECTRICAL CHARACTERISTICS](#) specifies conditions of device operation.
- (2) If Military/Aerospace specified devices are required, please contact the Texas Instruments Sales Office/Distributors for availability and specifications.

## OPERATING RATINGS

Thermal Resistance		
Package	( $\theta_{JC}$ )	( $\theta_{JA}$ )
PDIP	95°C/W	115°C/W
SOIC	75°C/W	160°C/W
SOT-23	115°C/W	185°C/W

## ELECTRICAL CHARACTERISTICS

$A_V = +2$ ,  $V_{CC} = \pm 5V$ ,  $R_L = 100\Omega$ ,  $R_f = 250\Omega$ ; unless specified

Symbol	Parameter	Conditions	Typ	Max/Min <sup>(1)</sup>				Units
Ambient Temperature		CLC409AJ	+25°C	-40°C	+25°C	+85°C		
<b>Frequency Domain Performance</b>								
SSBW	3dB Bandwidth	$V_{OUT} < 2V_{PP}$	350	>250	>250	>200	MHz	
LSBW		$V_{OUT} < 5V_{PP}$	110	>90	>90	>80	MHz	
	Gain Flatness	$V_{OUT} < 0.5V_{PP}$						
GFPL	Peaking	DC to 75MHz	0	<0.4	<0.4	<0.4	dB	
GFPH	Peaking	>75MHz	0	<0.8	<0.8	<0.8	dB	
GFR1	Rolloff	DC to 125MHz	0.2	<1.0	<1.0	<1.0	dB	
GFR2	Rolloff	@ 200MHz	1.0	<2.0	<2.2	<3.0	dB	
LPD	Linear Phase Deviation	DC to 100MHz	0.3	<0.8	<0.8	<1.0	deg	
DG1	Differential Gain	$R_L = 150\Omega$ , 3.58MHz	0.03	<0.07	<0.06	<0.06	%	
DG2		$R_L = 150\Omega$ , 4.43MHz	0.03	<0.07	<0.06	<0.06	%	
DP1	Differential Phase	$R_L = 150\Omega$ , 3.58MHz	0.01	<0.02	<0.02	<0.02	deg	
DP2		$R_L = 150\Omega$ , 4.43MHz	0.01	<0.02	<0.02	<0.02	deg	
<b>Time Domain Response</b>								
TRS	Rise and Fall Time	2V Step	1.3	<1.6	<1.6	<1.6	ns	
		5V Step	3.5	<4.2	<4.2	<4.6	ns	
TS	Settling Time to $\pm 0.1\%$	2V Step	8	<12	<12	<12	ns	
OS	Overshoot	2V Step	5	<15	<18	<18	%	
SR	Slew Rate		1200	>1000	>1000	>1000	V/ $\mu$ s	
<b>Distortion And Noise Response</b>								
HD2L	2nd Harmonic Distortion	$2V_{PP}$ , 5MHz	-86	<-78	<-81	<-81	dBc	
HD2		$2V_{PP}$ , 20MHz	-65	<-56	<-56	<-56	dBc	
HD2H		$2V_{PP}$ , 60MHz	-49	<-41	<-44	<-44	dBc	
HD3L	3rd Harmonic Distortion	$2V_{PP}$ , 5MHz	-84	<-76	<-76	<-76	dBc	
HD3		$2V_{PP}$ , 20MHz	-72	<-65	<-65	<-65	dBc	
HD3H		$2V_{PP}$ , 60MHz	-59	<-52	<-52	<-52	dBc	
	Equivalent Input Noise							
VN	Non-Inverting Voltage	>1MHz	2.2	<2.8	<2.8	<3.1	nV/ $\sqrt{Hz}$	
ICN	Inverting Current	>1MHz	14.3	<18	<18	<20	pA/ $\sqrt{Hz}$	
NCN	Non-Inverting Current	>1MHz	3.2	<4.0	<4.0	<4.5	pA/ $\sqrt{Hz}$	
SNF	Total Noise Floor	>1MHz	-157	<-155	<-155	<-154	dBm <sub>1Hz</sub>	
INV	Total Integrated Noise	1MHz to 150MHz	38	<47	<47	<52	$\mu$ V	
<b>Static, DC Performance</b>								
VIO	Input Offset Voltage <sup>(2)</sup>		0.5	<8.5	<4.5	<9.5	mV	
DVIO	Average Temperature Coefficient		25	<50	-	<50	$\mu$ V/ $^{\circ}$ C	
IBN	Input Bias Current <sup>(2)</sup>	Non Inverting	10	<44	<22	<22	$\mu$ A	
DIBN				100	<275	-	<125	nA/ $^{\circ}$ C
IBI	Input Bias Current <sup>(2)</sup>	Inverting	10	<36	<20	<30	$\mu$ A	
DIBI				100	<200	-	<100	nA/ $^{\circ}$ C
PSRR	Power Supply Rejection Ratio		50	>45	>45	>45	dB	
CMRR	Common Mode Rejection Ratio		50	>45	>45	>45	dB	
ICC	Supply Current <sup>(2)</sup>	No Load	13.5	<14.2	<14.2	<14.2	mA	

(1) Max/min ratings are based on product characterization and simulation. Individual parameters are tested as noted. Outgoing quality levels are determined from tested parameters.

(2) AJ-level: spec. is 100% tested at +25°C.

**ELECTRICAL CHARACTERISTICS (continued)**
 $A_V = +2$ ,  $V_{CC} = \pm 5V$ ,  $R_L = 100\Omega$ ,  $R_f = 250\Omega$ ; unless specified

Symbol	Parameter	Conditions	Typ	Max/Min <sup>(1)</sup>			Units
<b>Miscellaneous Performance</b>							
RIN	Non-Inverting Input Resistance		1000	>250	>500	>1000	k $\Omega$
CIN	Non-Inverting Input Capacitance		1	<2	<2	<2	pF
RO	Output Impedance	DC	0.1	<0.3	<0.2	<0.2	$\Omega$
VO	Output Voltage Range	$R_L = 100\Omega$	$\pm 3.5$	$>\pm 3.0$	$>\pm 3.2$	$>\pm 3.2$	V
CMIR	Common Mode Input Range		$\pm 2.2$	$\pm 1.5$	$\pm 2.0$	$\pm 2.0$	V
IO	Output Current		60	36	50	50	mA

**TYPICAL PERFORMANCE CHARACTERISTICS**

( $T_A = 25^\circ\text{C}$ ,  $A_V = +6$ ,  $V_{CC} = \pm 5\text{V}$ ,  $R_L = 100\Omega$ ,  $R_f = 500\Omega$ ; Unless Specified).

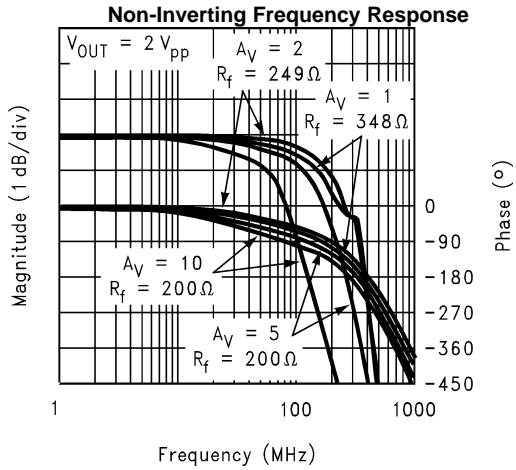


Figure 4.

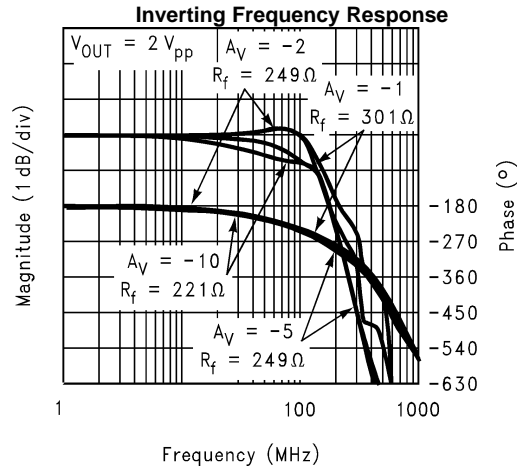


Figure 5.

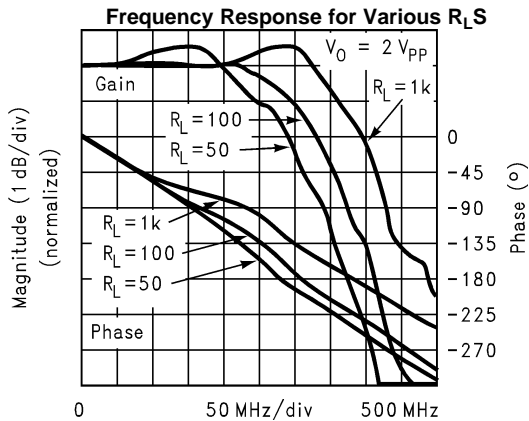


Figure 6.

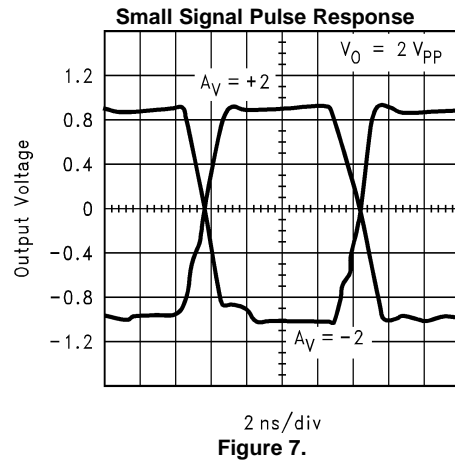


Figure 7.

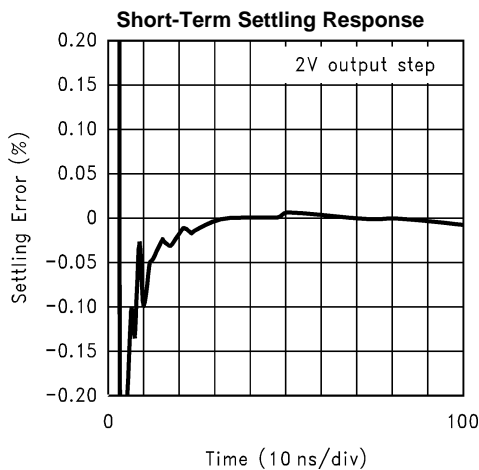


Figure 8.

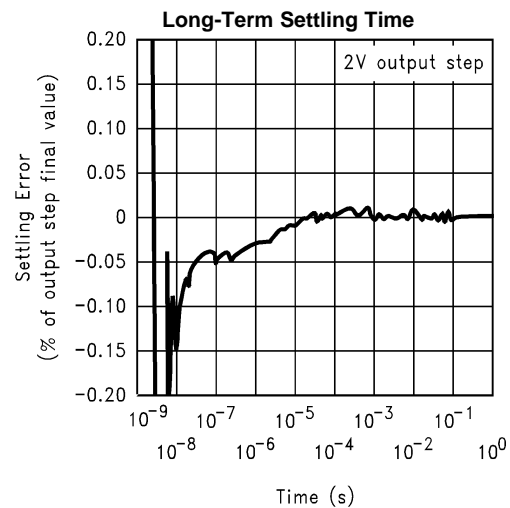


Figure 9.

**TYPICAL PERFORMANCE CHARACTERISTICS (continued)**

( $T_A = 25^\circ\text{C}$ ,  $A_V = +6$ ,  $V_{CC} = \pm 5\text{V}$ ,  $R_L = 100\Omega$ ,  $R_f = 500\Omega$ ; Unless Specified).

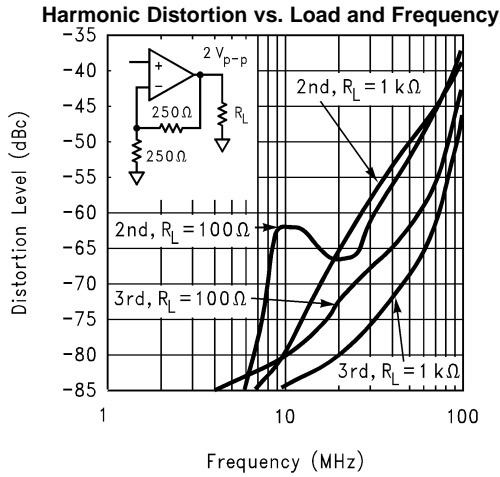


Figure 10.

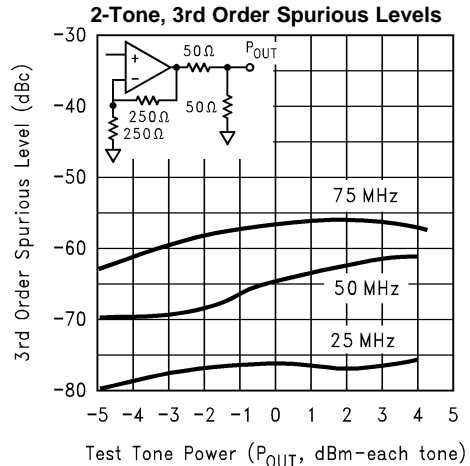


Figure 11.

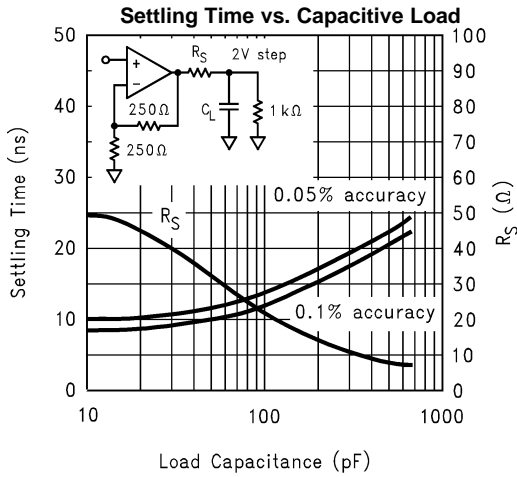


Figure 12.

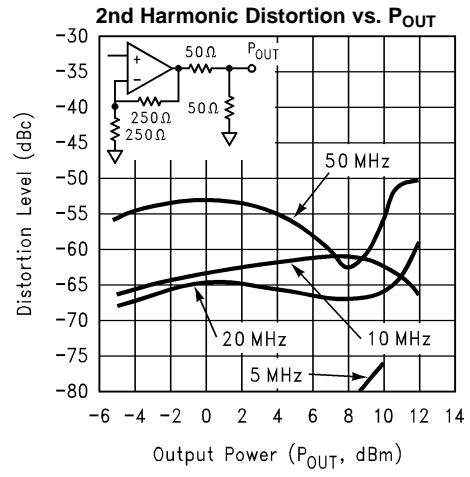


Figure 13.

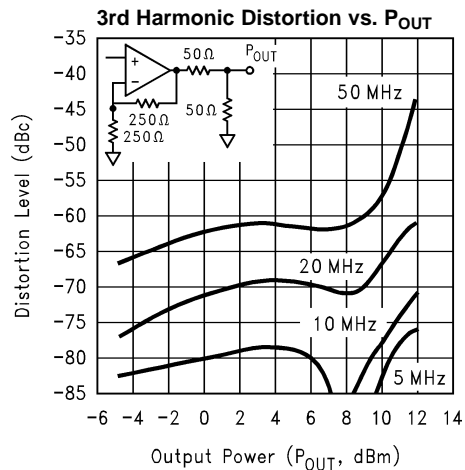


Figure 14.

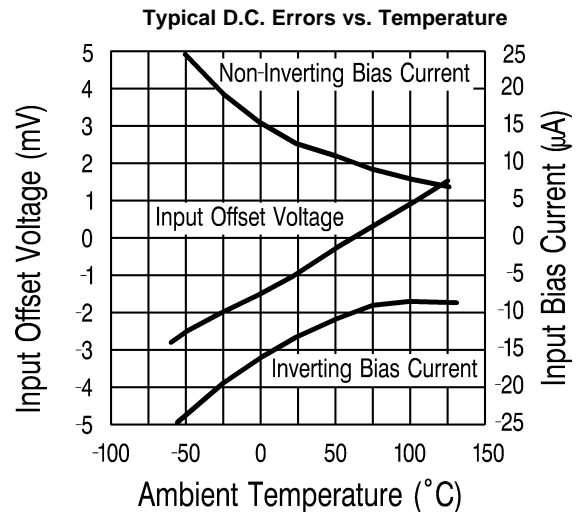


Figure 15.

**TYPICAL PERFORMANCE CHARACTERISTICS (continued)**

( $T_A = 25^\circ\text{C}$ ,  $A_V = +6$ ,  $V_{CC} = \pm 5\text{V}$ ,  $R_L = 100\Omega$ ,  $R_f = 500\Omega$ ; Unless Specified).

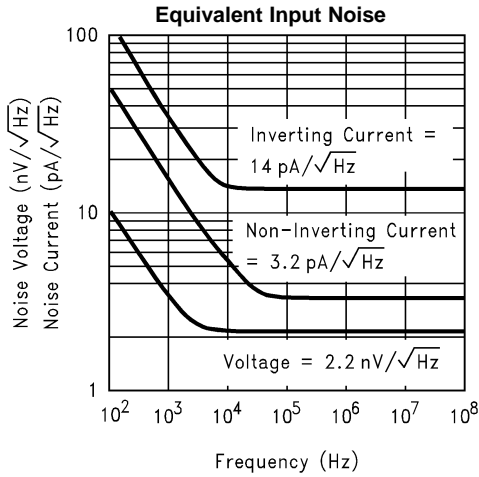


Figure 16.

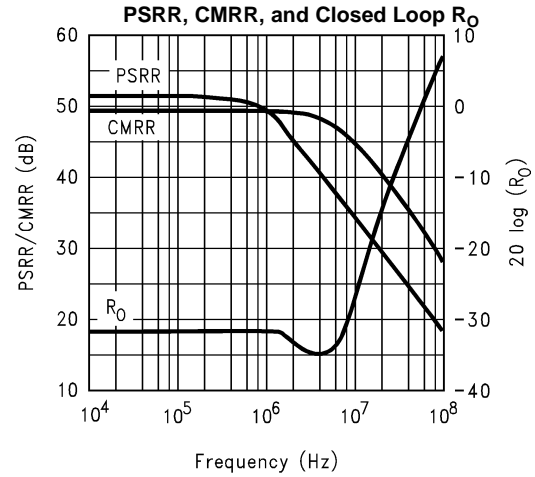


Figure 17.

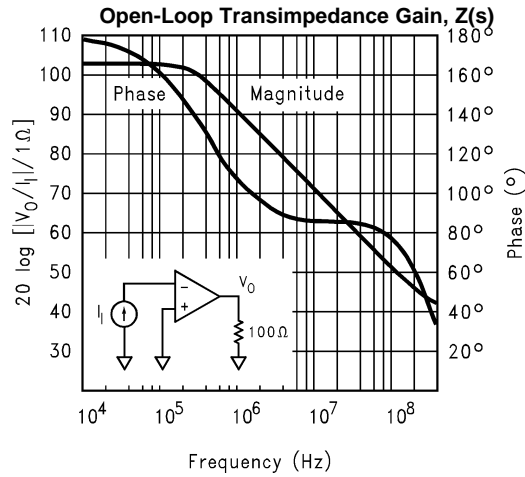


Figure 18.

## APPLICATION DIVISION

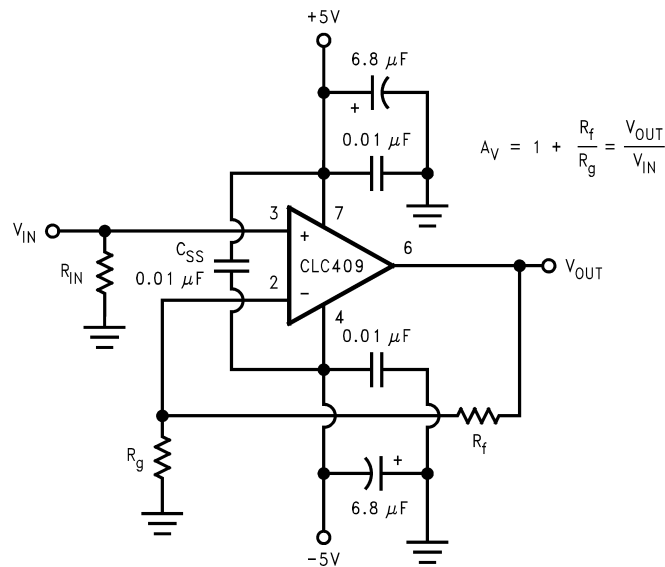


Figure 19. Recommended Non-Inverting Gain Circuit

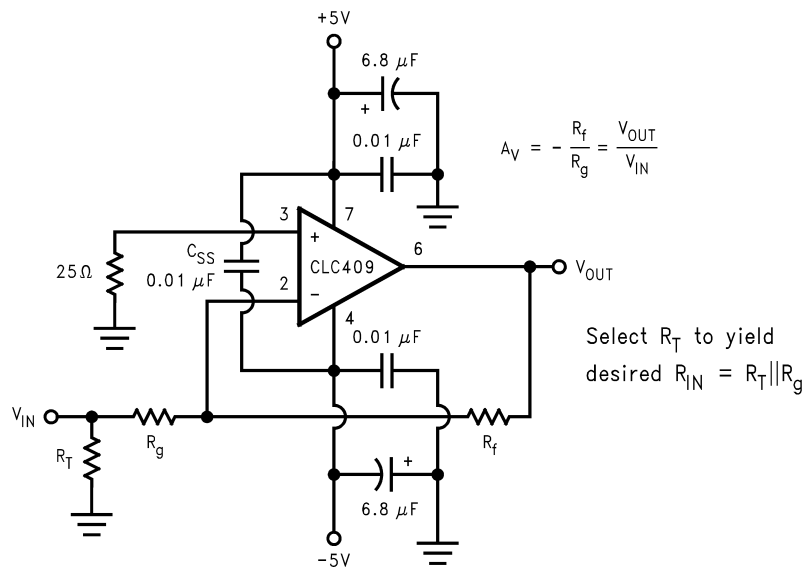


Figure 20. Recommended Inverting Gain Circuit

### Feedback Resistor

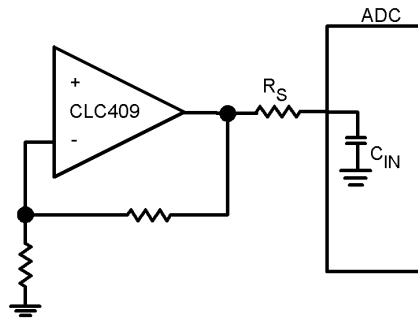
The CLC409 achieves its excellent pulse and distortion performance by using the current feedback topology pioneered by Comlinear Corporation. The loop gain for a current feedback op amp, and hence the frequency response, is predominantly set by the feedback resistor value. The CLC409 is optimized for use with a 250 Ω feedback resistor. Using lower values can lead to excessive ringing in the pulse response while a higher value will limit the bandwidth. Application Note OA-13 discusses this in detail along with the occasions where a different  $R_f$  might be advantageous.



## Harmonic Distortion

The CLC409 has been optimized for exceptionally low harmonic distortion while driving very demanding resistive or capacitive loads. Generally, when used as the input amplifier to very high speed flash ADCs, the distortions introduced by the converter will dominate over the low CLC409 distortions shown on the plots on the previous page. The 0.01 $\mu$ F capacitor ( $C_{SS}$ ) shown across the supplies in [Figure 19](#) and [Figure 20](#) is critical to achieving the lowest 2nd harmonic distortion.

The 2-tone, 3rd order spurious plot shows a relatively constant difference between the test power level and the spurious level with that difference depending on frequency. The CLC409 does not show an intercept type performance. (where the relative spurious levels change at a 2X rate vs. the test tone powers), due to an internal full power bandwidth enhancement circuit that boosts the performance as the output swing increases while dissipating negligible quiescent power under low output power conditions. This feature enhances the distortion performance and full power bandwidth to match that of much higher quiescent supply current parts.



**Figure 21. Input Amplifier to ADC**

[Figure 21](#) shows a typical application using the CLC409 to drive an ADC. The series resistor,  $R_S$ , between the amplifier output and the ADC input is critical to achieving best system performance. This load capacitance, if applied directly to the output pin, can quickly lead to unacceptable levels of ringing in the pulse response. The plot of  $R_S$  and settling time vs.  $C_L$  on the previous page is an excellent starting point for setting  $R_S$ . The value derived in that plot minimizes the step settling time into a fixed discrete capacitive load. Several additional constraints should be considered, however, in driving the capacitive input or an ADC.

There is an option to increase  $R_S$ , bandlimiting at the ADC input for either noise or Nyquist bandlimiting purposes. Increasing  $R_S$  too much, however, can induce an unacceptably large input glitch due to switching transients coupling through from the convert signal. Also,  $C_{in}$  is oftentimes a voltage dependent capacitance. This input impedance non-linearity will induce distortion terms that will increase as  $R_S$  is increased. Only slight adjustments up or down from the recommended  $R_S$  value should therefore be attempted in optimizing system performance.

## DC Accuracy and Noise

The CLC409 offers an improved offset voltage over the pin compatible CLC400 low gain amplifier. The offset adjustment available on the CLC400 was therefore not included in this part. The [Output Offset](#) equation below shows the output offset computation equation for the non-inverting configuration with an example using the typical bias current and offset specifications for  $A_V = +2$ .

### Output Offset

$$V_O = (\pm I_{bn} R_{in} \pm V_{io}) (1 + R_f / R_g) \pm I_{bi} R_f \quad (1)$$

Example Computation for  $A_V = +2$ ,  $R_f = 250\Omega$ ,  $R_{in} = 25\Omega$ :

$$V_O = (\pm 10\mu A (25\Omega) \pm 0.5mV) 2 \pm 10\mu A (250\Omega) = \pm 3.25mV \quad (2)$$

This low output offset voltage is a marked improvement over earlier very high speed amplifiers. Further improvement in the output offset voltage and drift is possible using the composite amplifiers described in [Application Note OA-7](#).

The two input bias currents are physically unrelated in both magnitude and polarity for the current feedback topology. It is not possible, therefore, to cancel their effects by matching the source impedance for the two inputs (as is commonly done for matched input bias current devices).

The total output noise is computed in a similar fashion to output offset voltage. Using the input noise voltage and two input noise currents, the output noise is developed through the same gain equations for each term but combined as the square root of the sum of squared contributing elements. See Application Note OA-12 for a full discussion of noise calculations for current feedback amplifiers.

### Printed Circuit Layout

As with any high speed component, a careful attention to the board layout is necessary for optimum performance. Evaluation PC boards (CLC730013-DIP, CLC730027-SOIC, and CLC730068-SOT) for the CLC409 are available. This additional supply bypassing capacitor,  $C_{SS}$ , can easily be added to the board if desired. Further layout suggestions can be found in Application Note OA-15.

**REVISION HISTORY**

<b>Changes from Revision D (April 2013) to Revision E</b>	<b>Page</b>
• Changed layout of National Data Sheet to TI format .....	<a href="#">10</a>

## IMPORTANT NOTICE

Texas Instruments Incorporated and its subsidiaries (TI) reserve the right to make corrections, enhancements, improvements and other changes to its semiconductor products and services per JESD46, latest issue, and to discontinue any product or service per JESD48, latest issue. Buyers should obtain the latest relevant information before placing orders and should verify that such information is current and complete. All semiconductor products (also referred to herein as "components") are sold subject to TI's terms and conditions of sale supplied at the time of order acknowledgment.

TI warrants performance of its components to the specifications applicable at the time of sale, in accordance with the warranty in TI's terms and conditions of sale of semiconductor products. Testing and other quality control techniques are used to the extent TI deems necessary to support this warranty. Except where mandated by applicable law, testing of all parameters of each component is not necessarily performed.

TI assumes no liability for applications assistance or the design of Buyers' products. Buyers are responsible for their products and applications using TI components. To minimize the risks associated with Buyers' products and applications, Buyers should provide adequate design and operating safeguards.

TI does not warrant or represent that any license, either express or implied, is granted under any patent right, copyright, mask work right, or other intellectual property right relating to any combination, machine, or process in which TI components or services are used. Information published by TI regarding third-party products or services does not constitute a license to use such products or services or a warranty or endorsement thereof. Use of such information may require a license from a third party under the patents or other intellectual property of the third party, or a license from TI under the patents or other intellectual property of TI.

Reproduction of significant portions of TI information in TI data books or data sheets is permissible only if reproduction is without alteration and is accompanied by all associated warranties, conditions, limitations, and notices. TI is not responsible or liable for such altered documentation. Information of third parties may be subject to additional restrictions.

Resale of TI components or services with statements different from or beyond the parameters stated by TI for that component or service voids all express and any implied warranties for the associated TI component or service and is an unfair and deceptive business practice. TI is not responsible or liable for any such statements.

Buyer acknowledges and agrees that it is solely responsible for compliance with all legal, regulatory and safety-related requirements concerning its products, and any use of TI components in its applications, notwithstanding any applications-related information or support that may be provided by TI. Buyer represents and agrees that it has all the necessary expertise to create and implement safeguards which anticipate dangerous consequences of failures, monitor failures and their consequences, lessen the likelihood of failures that might cause harm and take appropriate remedial actions. Buyer will fully indemnify TI and its representatives against any damages arising out of the use of any TI components in safety-critical applications.

In some cases, TI components may be promoted specifically to facilitate safety-related applications. With such components, TI's goal is to help enable customers to design and create their own end-product solutions that meet applicable functional safety standards and requirements. Nonetheless, such components are subject to these terms.

No TI components are authorized for use in FDA Class III (or similar life-critical medical equipment) unless authorized officers of the parties have executed a special agreement specifically governing such use.

Only those TI components which TI has specifically designated as military grade or "enhanced plastic" are designed and intended for use in military/aerospace applications or environments. Buyer acknowledges and agrees that any military or aerospace use of TI components which have **not** been so designated is solely at the Buyer's risk, and that Buyer is solely responsible for compliance with all legal and regulatory requirements in connection with such use.

TI has specifically designated certain components as meeting ISO/TS16949 requirements, mainly for automotive use. In any case of use of non-designated products, TI will not be responsible for any failure to meet ISO/TS16949.

### Products

Audio	<a href="http://www.ti.com/audio">www.ti.com/audio</a>
Amplifiers	<a href="http://amplifier.ti.com">amplifier.ti.com</a>
Data Converters	<a href="http://dataconverter.ti.com">dataconverter.ti.com</a>
DLP® Products	<a href="http://www.dlp.com">www.dlp.com</a>
DSP	<a href="http://dsp.ti.com">dsp.ti.com</a>
Clocks and Timers	<a href="http://www.ti.com/clocks">www.ti.com/clocks</a>
Interface	<a href="http://interface.ti.com">interface.ti.com</a>
Logic	<a href="http://logic.ti.com">logic.ti.com</a>
Power Mgmt	<a href="http://power.ti.com">power.ti.com</a>
Microcontrollers	<a href="http://microcontroller.ti.com">microcontroller.ti.com</a>
RFID	<a href="http://www.ti-rfid.com">www.ti-rfid.com</a>
OMAP Applications Processors	<a href="http://www.ti.com/omap">www.ti.com/omap</a>
Wireless Connectivity	<a href="http://www.ti.com/wirelessconnectivity">www.ti.com/wirelessconnectivity</a>

### Applications

Automotive and Transportation	<a href="http://www.ti.com/automotive">www.ti.com/automotive</a>
Communications and Telecom	<a href="http://www.ti.com/communications">www.ti.com/communications</a>
Computers and Peripherals	<a href="http://www.ti.com/computers">www.ti.com/computers</a>
Consumer Electronics	<a href="http://www.ti.com/consumer-apps">www.ti.com/consumer-apps</a>
Energy and Lighting	<a href="http://www.ti.com/energy">www.ti.com/energy</a>
Industrial	<a href="http://www.ti.com/industrial">www.ti.com/industrial</a>
Medical	<a href="http://www.ti.com/medical">www.ti.com/medical</a>
Security	<a href="http://www.ti.com/security">www.ti.com/security</a>
Space, Avionics and Defense	<a href="http://www.ti.com/space-avionics-defense">www.ti.com/space-avionics-defense</a>
Video and Imaging	<a href="http://www.ti.com/video">www.ti.com/video</a>

### TI E2E Community

[e2e.ti.com](http://e2e.ti.com)