

LM2483 180V Triple Bias Clamp

Check for Samples: [LM2483](#)

FEATURES

- Wide Range Integrated Triple Bias Clamp
- High Input Impedance
- Matched to LM2426 HDTV Driver

APPLICATIONS

- AC Coupled HDTV Applications Using the 1080i and 720p Formats as well as Standard NTSC and PAL Formats.

Schematic and Connection Diagrams

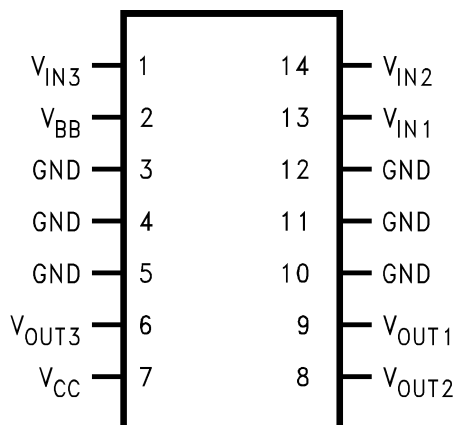


Figure 1. LM2483NA- Top View

DESCRIPTION

The LM2483 driver is an Integrated 180V triple bias clamp circuit for DC recovery of each of the AC coupled outputs of a HDTV CRT driver. It is well matched with the DAC outputs of the LM126X family of pre-amplifiers. Each amplifier has its gain internally set to -30. The LM2483 is packaged in an industry standard 14 lead molded plastic dual-in-line package.

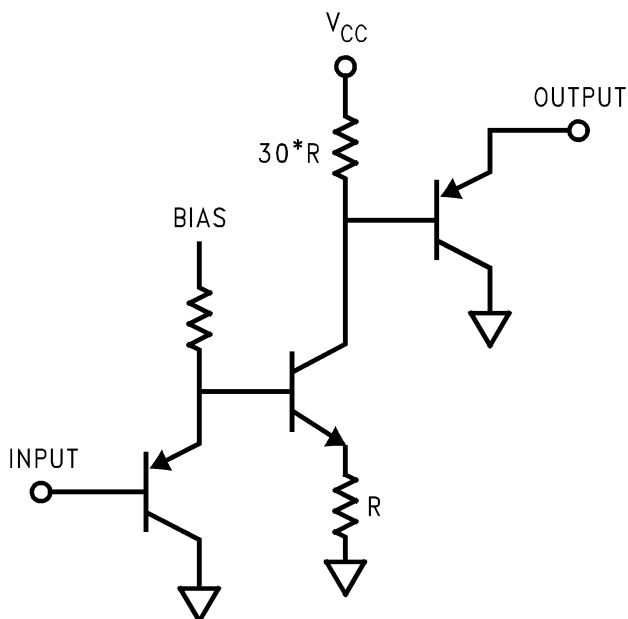


Figure 2. Simplified Schematic Diagram (One Channel)



Please be aware that an important notice concerning availability, standard warranty, and use in critical applications of Texas Instruments semiconductor products and disclaimers thereto appears at the end of this data sheet.

All trademarks are the property of their respective owners.



These devices have limited built-in ESD protection. The leads should be shorted together or the device placed in conductive foam during storage or handling to prevent electrostatic damage to the MOS gates.

ABSOLUTE MAXIMUM RATINGS⁽¹⁾⁽²⁾⁽³⁾

Supply Voltage, V_{CC}		+200V
Bias Voltage, V_{BB}		+15V
Input Voltage, V_{IN}		-0.5V to $V_{BB} + 0.5V$
Storage Temperature Range, T_{STG}		-65°C to +150°C
Lead Temperature	Soldering, <10sec	300°C
ESD Tolerance	Machine Model	200V
	Human Body Model	1.5 kV
Max Junction Temperature		150°C
θ_{JA} (Typ) ⁽⁴⁾		70°C

- (1) Absolute Maximum Ratings indicate limits beyond which damage to the device may occur.
- (2) All voltages are measured with respect to GND, unless otherwise specified.
- (3) If Military/Aerospace specified devices are required, please contact the Texas Instruments Sales Office/ Distributors for availability and specifications.
- (4) Measured with 1in² copper on PCB connected to pins 3, 4, 5, 10, 11, 12. See [THERMAL CONSIDERATIONS](#) Section.

LIMITS OF OPERATING RANGES⁽¹⁾⁽²⁾

V_{CC}	130V to 180V
V_{BB}	7V to 13V
V_{IN}	1V to 5V
V_{OUT}	40V to 175V
Ambient Temperature Range, T_A	0°C to 70°C

- (1) All voltages are measured with respect to GND, unless otherwise specified.
- (2) Operating Ratings indicate conditions for which the device is functional, but do not ensure specific performance limits. For ensured specifications and the test conditions, see the [ELECTRICAL CHARACTERISTICS](#). Datasheet min/max specification limits are ensured by design, test, or statistical analysis. The ensured specifications apply only for the test conditions listed. Some performance characteristics may change when the device is not operated under the listed test conditions.

DC CLAMP ELECTRICAL CHARACTERISTICS

(See [Figure 3](#) for Test Circuit)

Unless otherwise noted: $V_{CC} = +180V$, $V_{BB} = 8V$, $V_{IN} = +2.5V$, $T_A = 30^\circ C$

Symbol	Parameter	Conditions	Min	Typ	Max	Units
I_{CC}	Supply Current	All three channels, includes 100K pull-up resistor current		4.5	7	mA
I_{BB}	Bias Supply Current	All channels		4		mA
V_{OUT}	DC Output Voltage		122	127	132	V_{DC}
$V_{OUT-Range}$	Output Voltage Range	V_{IN} Range = +1.5V to 4.5V		89		V
A_V	DC Voltage Gain		-27	-30	-33	V/V
LE	Linearity Error	See ⁽¹⁾		5		%

- (1) Linearity Error is the variation in dc gain from $V_{IN} = 1.5$ volts to $V_{IN} = 4.5$ volts.

TEST CIRCUIT

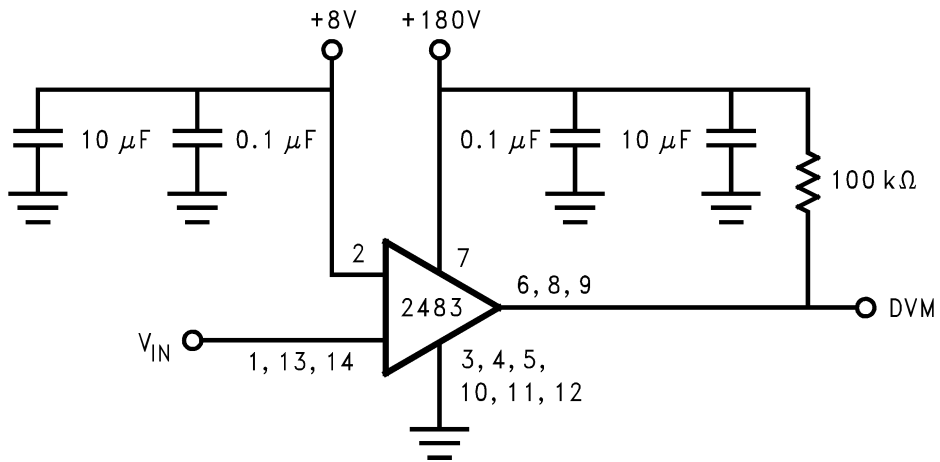


Figure 3. Test Circuit

Figure 3 shows the test circuit for evaluation of the LM2483 Clamp Amplifier. A high impedance Voltmeter (>100MΩ) is used for DC measurements at the output.

TYPICAL PERFORMANCE CHARACTERISTICS

($V_{CC} = +180V$, $V_{BB} = +8V$, $V_{IN} = +2.5V$, Test Circuit - Figure 3)

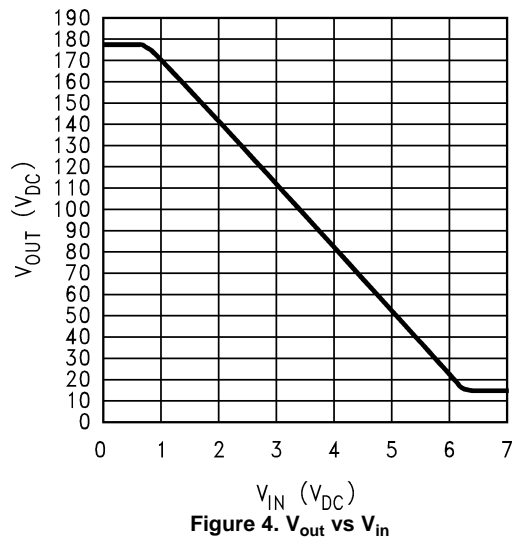


Figure 4. V_{out} vs V_{in}

THEORY OF OPERATION

The simplified circuit diagram of the LM2483 is shown in [Figure 2](#). The DC clamp circuit amplifies the input signal by -30 and the gain is set by the resistor ratio of 30R and R. The output will require a pull-up resistor to 180V.

[Figure 3](#) shows the test circuit for evaluation of the LM2483 Clamp Amplifier. A high impedance voltmeter (>100MΩ) is used for DC measurements at the output.

APPLICATION HINTS

Introduction

Texas Instruments (TI) is committed to provide application information that assists our customers in obtaining the best performance possible from our products. The following information is provided in order to support this commitment. The reader should be aware that the optimization of performance was done using a specific printed circuit board designed at TI. Variations in performance can be realized due to physical changes in the printed circuit board and the application. Therefore, the designer should know that component value changes may be required in order to optimize performance in a given application. The values shown in this document can be used as a starting point for evaluation purposes.

Power Supply Bypass

The LM2483 should have proper power supply bypassing for optimum performance. A 0.1 μF capacitor should be connected from the supply pins, V_{CC} and V_{BB} , to ground, as close to the supply and ground pins as is practical. Additionally, a 1 μF electrolytic capacitor should be connected from the supply pins to ground. The electrolytic capacitor should also be placed reasonably close to the LM2483's supply and ground pins.

Arc Protection

During normal CRT operation, internal arcing may occasionally occur. To protect the LM2483 against arcing the following steps should be done (See [Figure 8](#)):

- The traces connecting the LM126X preamp DACs and the LM2483 input pins (pins 1, 13, and 14) should be run around the top of the LM2426. They should not go through the output circuit of the LM2426.
- C43, C44, and C45 should be located close to the LM126X preamp.
- R44, R45, and R46 should be located close to the LM2483.
- C21, C24, and C25 on the output pins of the LM2483 (pins 6, 8, and 9) should be located close to the LM2483. The grounds of these capacitors should have a short direct return to GND (pins 3, 4, 5, 10, 11, and 12) of the LM2483.
- C9 and C36 on the supply lines (pins 2 and 7) should be located close to the LM2483. The grounds of these capacitors should have a short direct return to GND (pins 3, 4, 5, 10, 11, and 12) of the LM2483.
- The ground of the LM2483 should have a short direct connection to the ground of the LM2426.

THERMAL CONSIDERATIONS

The package the LM2483 is in uses the ground pins (3, 4, 5, 10, 11, and 12) to conduct heat from the LM2483. These pins should be connected to a ground plane that acts as a heat sink. See the example ground plane connected to these pins in the Texas Instruments PCB shown in [Figure 8](#).

[Figure 5](#) is used to determine the size of ground plane heat sink. The lines in [Figure 5](#) represent a junction temperature of 150°C when the size of heat sink noted by the line is used. The area under the line is the safe operating area. Using [Figure 5](#), the following example shows how to determine the size of the ground plane.

The LM2483 uses about 0.45W of quiescent power. If $V_{CC} = +180V$, and each channel of the LM2483 needs to sink an average of 1mA, the LM2483 will use:

$$0.45W + 3 \times (180V \times 1mA) = 0.99W \quad (1)$$

[Figure 5](#) shows that the LM2483 dissipating 0.99W with one sq. in. of copper ground plane heat sink is in the safe operating range for any ambient temperature up to 70°C.

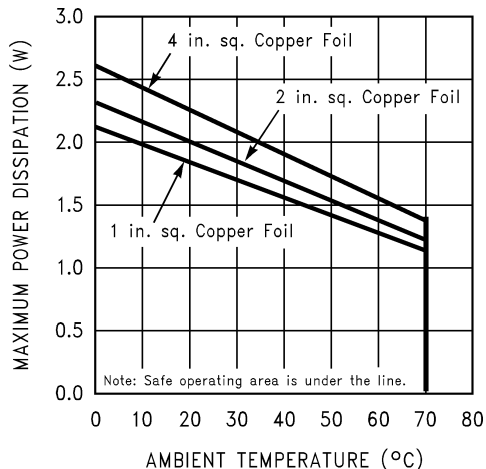


Figure 5. Maximum Power Dissipation vs. Ambient Temperature

TYPICAL APPLICATION

A typical application of the LM2483 is shown in [Figure 6](#) and [Figure 7](#). Used in conjunction with an LM126X Preamp and an LM2426 CRT Driver, a complete video channel from input to CRT cathode can be achieved. Performance is ideal for HDTV applications. [Figure 6](#) and [Figure 7](#) are the schematic for the [TI Demonstration Board](#) that can be used to evaluate the LM126X/LM2426/LM2483.

TI Demonstration Board

[Figure 8](#) shows the routing and component placement on the TI LM126X/LM2426/LM2483 demonstration board. The schematic of the board is shown in [Figure 6](#) and [Figure 7](#). This board provides a good example of a layout that can be used as a guide.

Demonstration Board Schematics

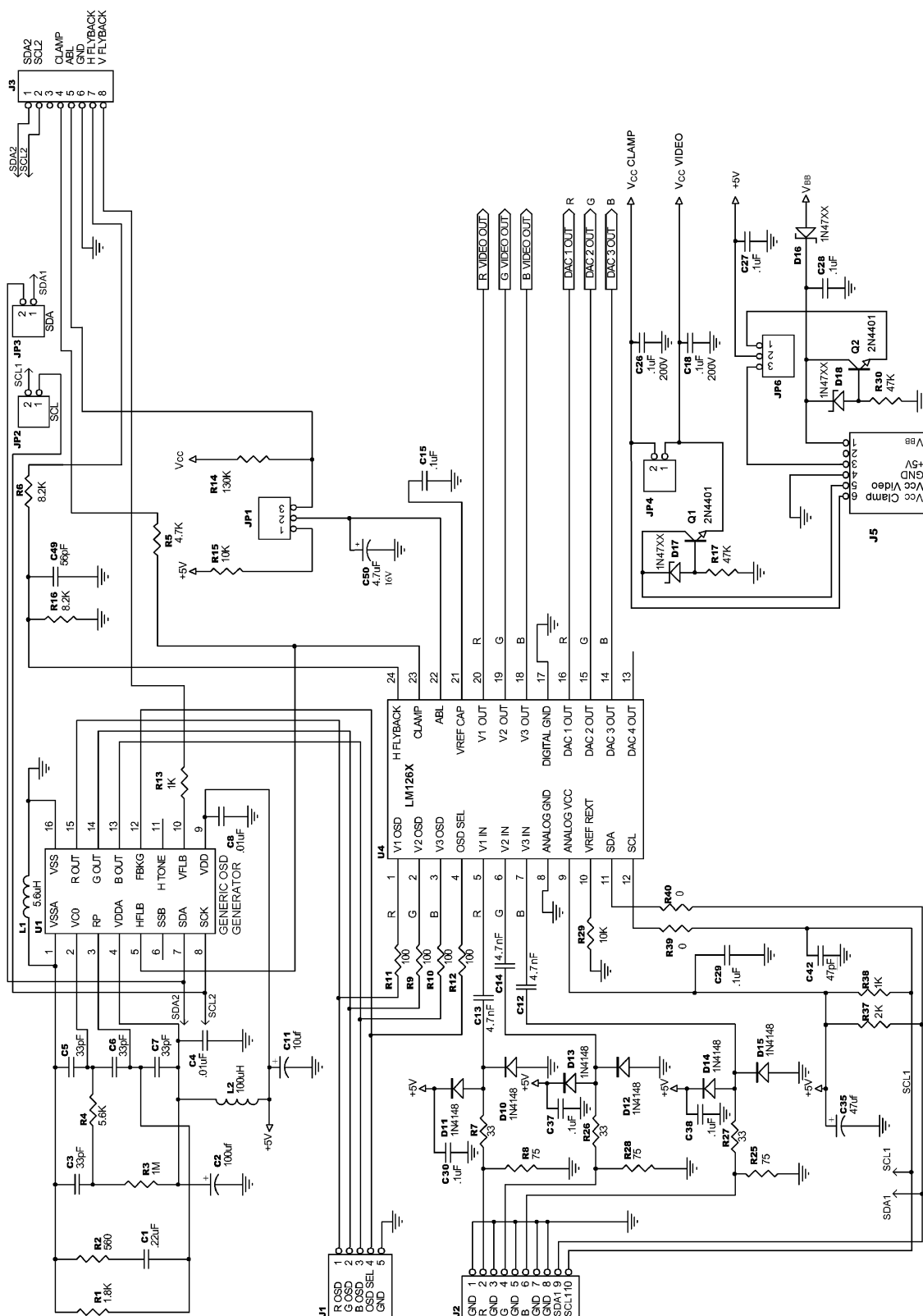


Figure 6. LM126X/LM2426/LM2483 Demonstration Board Schematic

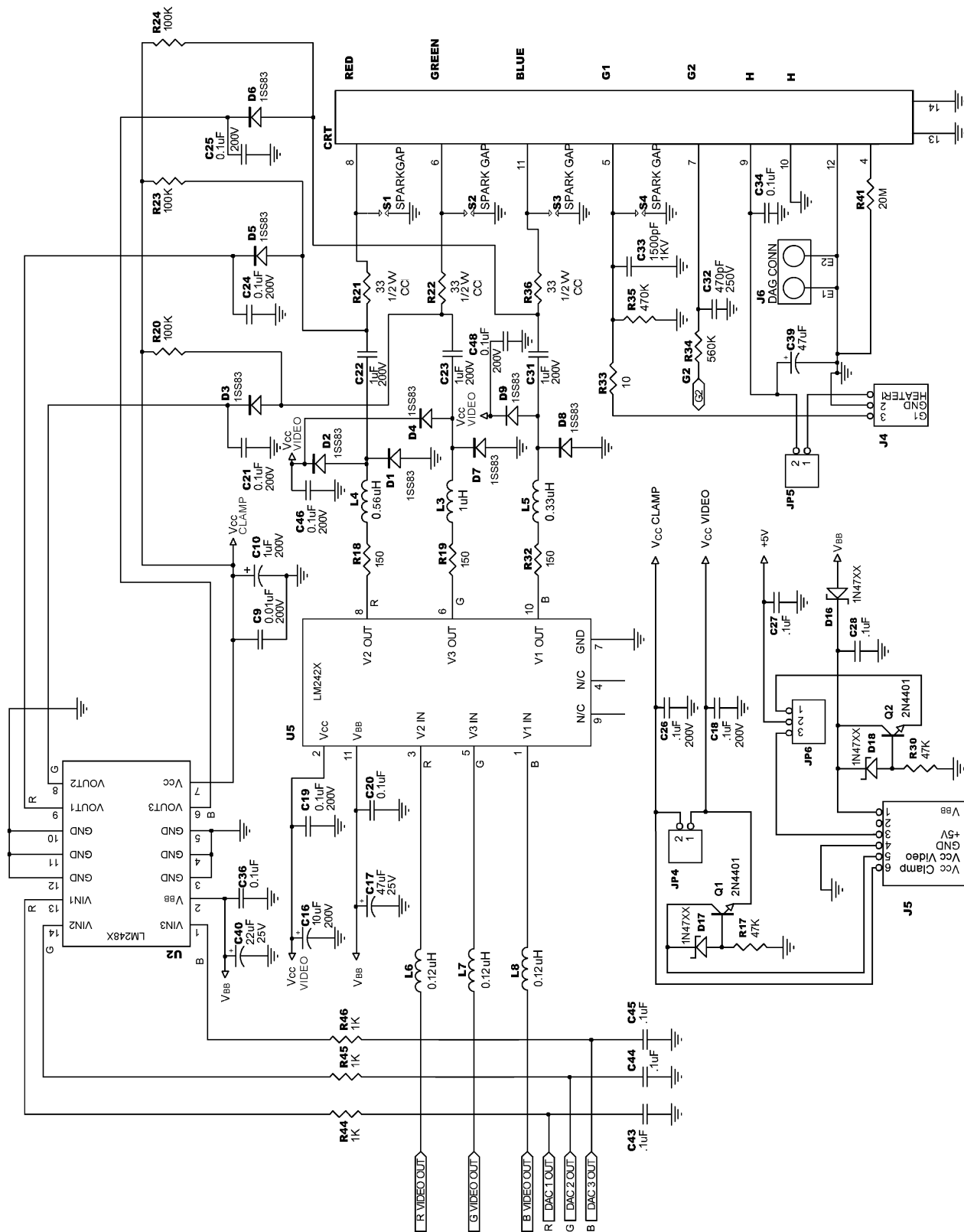


Figure 7. LM126X/LM2426/LM2483 Demonstration Board Schematic

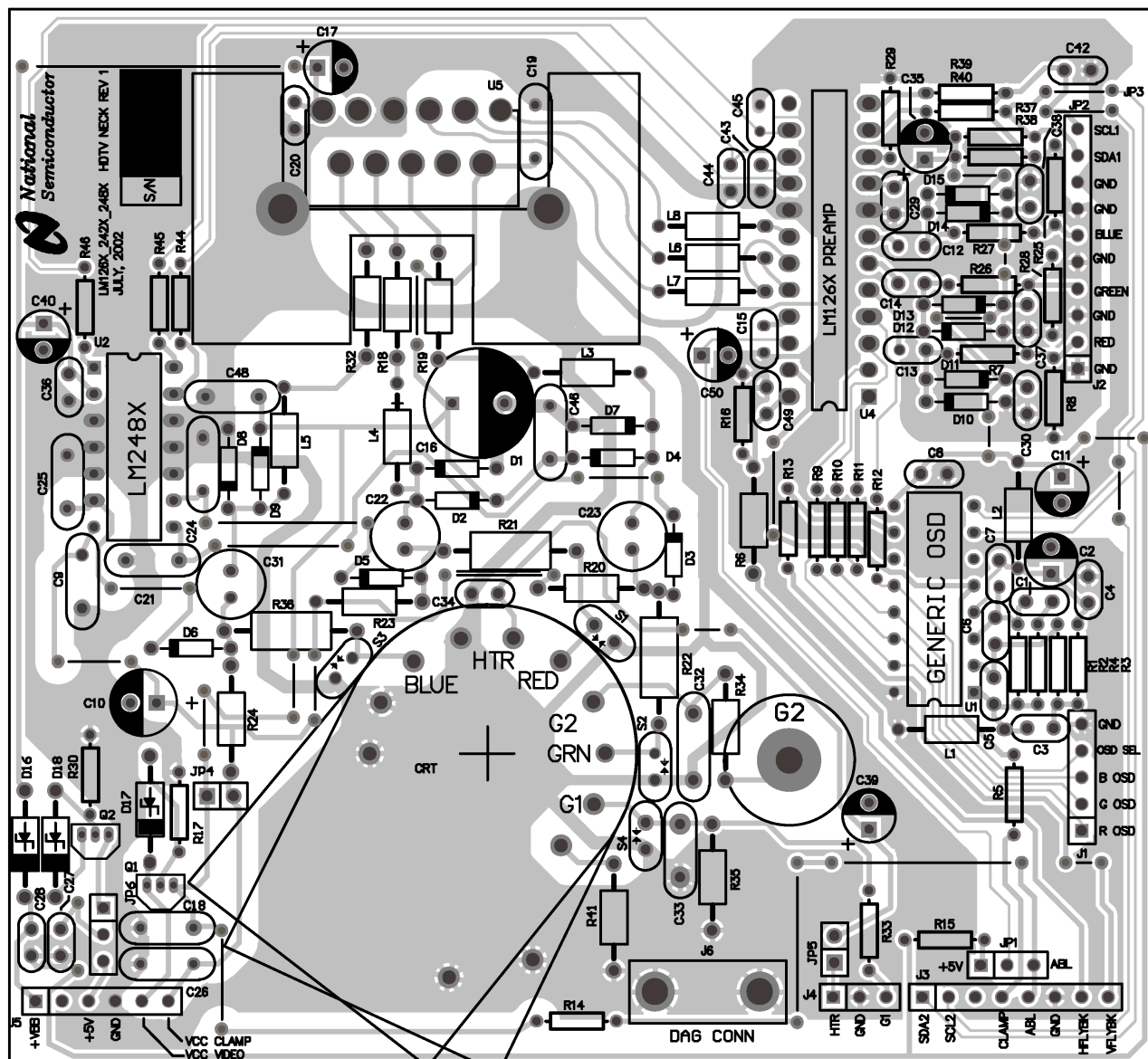


Figure 8. LM126X/LM2426/LM2483 Demonstration Board Layout

REVISION HISTORY

Changes from Revision B (April 2013) to Revision C	Page
• Changed layout of National Data Sheet to TI format	8

IMPORTANT NOTICE

Texas Instruments Incorporated and its subsidiaries (TI) reserve the right to make corrections, enhancements, improvements and other changes to its semiconductor products and services per JESD46, latest issue, and to discontinue any product or service per JESD48, latest issue. Buyers should obtain the latest relevant information before placing orders and should verify that such information is current and complete. All semiconductor products (also referred to herein as "components") are sold subject to TI's terms and conditions of sale supplied at the time of order acknowledgment.

TI warrants performance of its components to the specifications applicable at the time of sale, in accordance with the warranty in TI's terms and conditions of sale of semiconductor products. Testing and other quality control techniques are used to the extent TI deems necessary to support this warranty. Except where mandated by applicable law, testing of all parameters of each component is not necessarily performed.

TI assumes no liability for applications assistance or the design of Buyers' products. Buyers are responsible for their products and applications using TI components. To minimize the risks associated with Buyers' products and applications, Buyers should provide adequate design and operating safeguards.

TI does not warrant or represent that any license, either express or implied, is granted under any patent right, copyright, mask work right, or other intellectual property right relating to any combination, machine, or process in which TI components or services are used. Information published by TI regarding third-party products or services does not constitute a license to use such products or services or a warranty or endorsement thereof. Use of such information may require a license from a third party under the patents or other intellectual property of the third party, or a license from TI under the patents or other intellectual property of TI.

Reproduction of significant portions of TI information in TI data books or data sheets is permissible only if reproduction is without alteration and is accompanied by all associated warranties, conditions, limitations, and notices. TI is not responsible or liable for such altered documentation. Information of third parties may be subject to additional restrictions.

Resale of TI components or services with statements different from or beyond the parameters stated by TI for that component or service voids all express and any implied warranties for the associated TI component or service and is an unfair and deceptive business practice. TI is not responsible or liable for any such statements.

Buyer acknowledges and agrees that it is solely responsible for compliance with all legal, regulatory and safety-related requirements concerning its products, and any use of TI components in its applications, notwithstanding any applications-related information or support that may be provided by TI. Buyer represents and agrees that it has all the necessary expertise to create and implement safeguards which anticipate dangerous consequences of failures, monitor failures and their consequences, lessen the likelihood of failures that might cause harm and take appropriate remedial actions. Buyer will fully indemnify TI and its representatives against any damages arising out of the use of any TI components in safety-critical applications.

In some cases, TI components may be promoted specifically to facilitate safety-related applications. With such components, TI's goal is to help enable customers to design and create their own end-product solutions that meet applicable functional safety standards and requirements. Nonetheless, such components are subject to these terms.

No TI components are authorized for use in FDA Class III (or similar life-critical medical equipment) unless authorized officers of the parties have executed a special agreement specifically governing such use.

Only those TI components which TI has specifically designated as military grade or "enhanced plastic" are designed and intended for use in military/aerospace applications or environments. Buyer acknowledges and agrees that any military or aerospace use of TI components which have **not** been so designated is solely at the Buyer's risk, and that Buyer is solely responsible for compliance with all legal and regulatory requirements in connection with such use.

TI has specifically designated certain components as meeting ISO/TS16949 requirements, mainly for automotive use. In any case of use of non-designated products, TI will not be responsible for any failure to meet ISO/TS16949.

Products

Audio	www.ti.com/audio
Amplifiers	amplifier.ti.com
Data Converters	dataconverter.ti.com
DLP® Products	www.dlp.com
DSP	dsp.ti.com
Clocks and Timers	www.ti.com/clocks
Interface	interface.ti.com
Logic	logic.ti.com
Power Mgmt	power.ti.com
Microcontrollers	microcontroller.ti.com
RFID	www.ti-rfid.com
OMAP Applications Processors	www.ti.com/omap
Wireless Connectivity	www.ti.com/wirelessconnectivity

Applications

Automotive and Transportation	www.ti.com/automotive
Communications and Telecom	www.ti.com/communications
Computers and Peripherals	www.ti.com/computers
Consumer Electronics	www.ti.com/consumer-apps
Energy and Lighting	www.ti.com/energy
Industrial	www.ti.com/industrial
Medical	www.ti.com/medical
Security	www.ti.com/security
Space, Avionics and Defense	www.ti.com/space-avionics-defense
Video and Imaging	www.ti.com/video

TI E2E Community

e2e.ti.com