

LMP8645/LMP8645HV Precision High Voltage Current Sense Amplifier

Check for Samples: [LMP8645](#), [LMP8645HV](#)

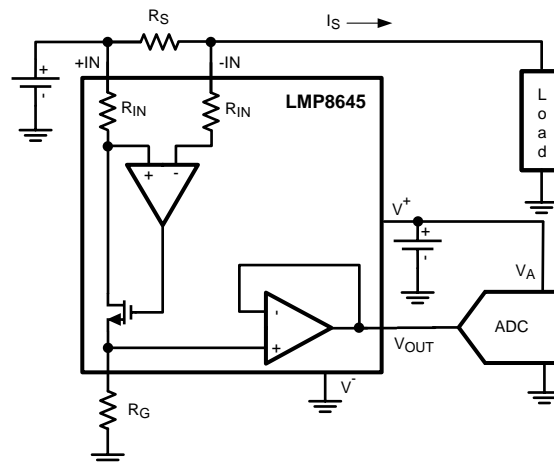
FEATURES

- Typical Values, $T_A = 25^\circ\text{C}$
- High Common-Mode Voltage Range
 - LMP8645 -2V to 42V
 - LMP8645HV -2V to 76V
- Supply Voltage Range 2.7V to 12V
- Gain Configurable with a Single Resistor
- Max Variable Gain Accuracy (with External Resistor) 2.0%
- Transconductance 200 $\mu\text{A/V}$
- Low Offset Voltage 1 mV
- Input Bias 12 μA
- PSRR 90 dB
- CMRR 95 dB
- Temperature Range -40°C to 125°C
- 6-Pin SOT Package

APPLICATIONS

- High-Side Current Sense
- Vehicle Current Measurement
- Motor Controls
- Battery Monitoring
- Remote Sensing
- Power Management

Typical Application



DESCRIPTION

The LMP8645 and the LMP8645HV are precision current sense amplifiers that detect small differential voltages across a sense resistor in the presence of high input common mode voltages with a supply voltage Range from 2.7V to 12V.

The LMP8645 accepts input signals with common mode voltage Range from -2V to 42V, while the LMP8645HV accepts input signal with common mode voltage Range from -2V to 76V. The LMP8645 and LMP8645HV have adjustable gain for applications where supply current and high common mode voltage are the determining factors. The gain is configured with a single resistor, providing a high level of flexibility, the accuracy could be as low as 2% (max) including the gain setting resistor. The output is buffered in order to provide low output impedance. This high side current sense amplifier is ideal for sensing and monitoring currents in DC or battery powered systems, excellent AC and DC specifications over temperature, and keeps errors in the current sense loop to a minimum. The LMP8645 is an ideal choice for industrial, automotive and consumer applications, and it is available in SOT-6 package.



Please be aware that an important notice concerning availability, standard warranty, and use in critical applications of Texas Instruments semiconductor products and disclaimers thereto appears at the end of this data sheet.

All trademarks are the property of their respective owners.



These devices have limited built-in ESD protection. The leads should be shorted together or the device placed in conductive foam during storage or handling to prevent electrostatic damage to the MOS gates.

Absolute Maximum Ratings⁽¹⁾⁽²⁾

ESD Tolerance ⁽³⁾	Human Body Model	For input pins +IN, -IN	±5000V
		For all other pins	±2000V
	Machine Model		200V
		Charge device model	1250V
Supply Voltage ($V_S = V^+ - V^-$)			13.2V
Differential voltage +IN- (-IN)			6V
Voltage at pins +IN, -IN	LMP8645HV		-6V to 80V
	LMP8645		-6V to 60V
Voltage at R_G pin			13.2V
Voltage at OUT pin			V^- to V^+
Storage Temperature Range			-65°C to 150°C
Junction Temperature ⁽⁴⁾			150°C
For soldering specifications, http://www.ti.com/lit/SNOA549			

- (1) Absolute Maximum Ratings indicate limits beyond which damage to the device may occur. Operating Ratings indicate conditions for which the device is intended to be functional, but specific performance is not ensured. For ensured specifications and the test conditions, see the Electrical Characteristics Tables.
- (2) If Military/Aerospace specified devices are required, please contact the Texas Instruments Sales Office/Distributors for availability and specifications.
- (3) Human Body Model, applicable std. MIL-STD-883, Method 3015.7. Machine Model, applicable std. JESD22-A115-A (ESD MM std. of JEDEC) Field-Induced Charge-Device Model, applicable std. JESD22-C101-C (ESD FICDM std. of JEDEC).
- (4) The maximum power dissipation must be derated at elevated temperatures and is dictated by $T_{J(MAX)}$, θ_{JA} , and the ambient temperature, T_A . The maximum allowable power dissipation $P_{DMAX} = (T_{J(MAX)} - T_A) / \theta_{JA}$ or the number given in Absolute Maximum Ratings, whichever is lower.

Operating Ratings⁽¹⁾

Supply Voltage ($V_S = V^+ - V^-$)		2.7V to 12V
Temperature Range ⁽²⁾		-40°C to 125°C
Package Thermal Resistance ⁽²⁾	SOT-6	96°C/W

- (1) Absolute Maximum Ratings indicate limits beyond which damage to the device may occur. Operating Ratings indicate conditions for which the device is intended to be functional, but specific performance is not ensured. For ensured specifications and the test conditions, see the Electrical Characteristics Tables.
- (2) The maximum power dissipation must be derated at elevated temperatures and is dictated by $T_{J(MAX)}$, θ_{JA} , and the ambient temperature, T_A . The maximum allowable power dissipation $P_{DMAX} = (T_{J(MAX)} - T_A) / \theta_{JA}$ or the number given in Absolute Maximum Ratings, whichever is lower.

2.7V Electrical Characteristics⁽¹⁾

Unless otherwise specified, all limits specified for at $T_A = 25^\circ\text{C}$, $V_S = V^+ - V^-$, $V^+ = 2.7\text{V}$, $V^- = 0\text{V}$, $-2\text{V} < V_{\text{CM}} < 76\text{V}$, $R_G = 25\text{k}\Omega$, $R_L = 10\text{M}\Omega$. **Boldface** limits apply at the temperature extremes.

Symbol	Parameter	Condition	Min ⁽²⁾	Typ ⁽³⁾	Max ⁽²⁾	Units
V_{OS}	Input Offset Voltage	$V_{\text{CM}} = 2.1\text{V}$	-1 -1.7		1 1.7	mV
TCV_{OS}	Input Offset Voltage Drift ^{(4) (5)}	$V_{\text{CM}} = 2.1\text{V}$			7	$\mu\text{V}/^\circ\text{C}$
I_{B}	Input Bias Current ⁽⁶⁾	$V_{\text{CM}} = 2.1\text{V}$		12	20	μA
e_{ni}	Input Voltage Noise ⁽⁵⁾	$f > 10\text{ kHz}$, $R_G = 5\text{ k}\Omega$		120		$\text{nV}/\sqrt{\text{Hz}}$
$V_{\text{SENSE(MAX)}}$	Max Input Sense Voltage ⁽⁵⁾	$V_{\text{CM}} = 12\text{V}$, $R_G = 5\text{ k}\Omega$		600		mV
Gain A_V	Adjustable Gain Setting ⁽⁵⁾	$V_{\text{CM}} = 12\text{V}$	1		100	V/V
G_m	Transconductance	$V_{\text{CM}} = 2.1\text{V}$		200		$\mu\text{A}/\text{V}$
	Accuracy	$V_{\text{CM}} = 2.1\text{V}$	-2 -3.4		2 3.4	%
	G_m drift ⁽⁵⁾	-40°C to 125°C , $V_{\text{CM}} = 2.1\text{V}$			140	$\text{ppm}/^\circ\text{C}$
PSRR	Power Supply Rejection Ratio	$V_{\text{CM}} = 2.1\text{V}$, $2.7\text{V} < V^+ < 12\text{V}$	90			dB
CMRR	Common Mode Rejection Ratio	LMP8645HV $2.1\text{V} < V_{\text{CM}} < 76\text{V}$ LMP8645 $2.1\text{V} < V_{\text{CM}} < 42\text{V}$	95			dB
		$-2\text{V} < V_{\text{CM}} < 2\text{V}$	60			
BW	-3 dB Bandwidth ⁽⁵⁾	$R_G = 10\text{ k}\Omega$, $C_G = 4\text{ pF}$, $V_{\text{SENSE}} = 400\text{ mV}$, $C_L = 30\text{ pF}$, $R_L = 1\text{M}\Omega$		990		kHz
		$R_G = 25\text{ k}\Omega$, $C_G = 4\text{ pF}$, $V_{\text{SENSE}} = 200\text{ mV}$, $C_L = 30\text{ pF}$, $R_L = 1\text{M}\Omega$		260		
		$R_G = 50\text{ k}\Omega$, $C_G = 4\text{ pF}$, $V_{\text{SENSE}} = 100\text{ mV}$, $C_L = 30\text{ pF}$, $R_L = 1\text{M}\Omega$		135		
SR	Slew Rate ^{(7) (5)}	$V_{\text{CM}} = 5\text{V}$, $C_G = 4\text{ pF}$, V_{SENSE} from 25 mV to 175 mV, $C_L = 30\text{ pF}$, $R_L = 1\text{M}\Omega$		0.5		V/ μs
I_{S}	Supply Current	$V_{\text{CM}} = 2.1\text{V}$		380	525 710	μA
		$V_{\text{CM}} = -2\text{V}$		2000	2500 2700	
V_{OUT}	Maximum Output Voltage	$V_{\text{CM}} = 2.1\text{V}$, $R_G = 500\text{ k}\Omega$	1.2			V
	Minimum Output Voltage	$V_{\text{CM}} = 2.1\text{V}$			20	mV
I_{OUT}	Output current ⁽⁵⁾	Sourcing, $V_{\text{OUT}} = 600\text{mV}$, $R_G = 150\text{k}\Omega$		5		mA
		Sinking, $V_{\text{OUT}} = 600\text{mV}$, $R_G = 150\text{k}\Omega$		5		
C_{LOAD}	Max Output Capacitance Load ⁽⁵⁾			30		pF

- (1) Electrical Table values apply only for factory testing conditions at the temperature indicated. Factory testing conditions result in very limited self-heating of the device such that $T_J = T_A$. No specification of parametric performance is indicated in the electrical tables under conditions of internal self-heating where $T_J > T_A$.
- (2) All limits are specified by testing, design, or statistical analysis.
- (3) Typical values represent the most likely parametric norm at the time of characterization. Actual typical values may vary over time and will also depend on the application and configuration. The typical values are not tested and are not ensured on shipped production material.
- (4) Offset voltage temperature drift is determined by dividing the change in V_{OS} at the temperature extremes by the total temperature change.
- (5) This parameter is specified by design and/or characterization and is not tested in production.
- (6) Positive Bias Current corresponds to current flowing into the device.
- (7) The number specified is the average of rising and falling slew rates and measured at 90% to 10%.

5V Electrical Characteristics⁽¹⁾

Unless otherwise specified, all limits specified for at $T_A = 25^\circ\text{C}$, $V_S = V^+ - V^-$, $V^+ = 5\text{V}$, $V^- = 0\text{V}$, $-2\text{V} < V_{\text{CM}} < 76\text{V}$, $R_g = 25\text{k}\Omega$, $R_L = 10\text{M}\Omega$. **Boldface** limits apply at the temperature extremes.

Symbol	Parameter	Condition	Min ⁽²⁾	Typ ⁽³⁾	Max ⁽²⁾	Units
V_{OS}	Input Offset Voltage	$V_{\text{CM}} = 2.1\text{V}$	-1 -1.7		1 1.7	mV
TCV_{OS}	Input Offset Voltage Drift ⁽⁴⁾⁽⁵⁾	$V_{\text{CM}} = 2.1\text{V}$			7	$\mu\text{V}/^\circ\text{C}$
I_{B}	Input Bias Current ⁽⁶⁾	$V_{\text{CM}} = 2.1\text{V}$		12.5	22	μA
e_{ni}	Input Voltage Noise ⁽⁵⁾	$f > 10\text{kHz}$, $R_G = 5\text{k}\Omega$		120		$\text{nV}/\sqrt{\text{Hz}}$
$V_{\text{SENSE(MAX)}}$	Max Input Sense Voltage ⁽⁵⁾	$V_{\text{CM}} = 12\text{V}$, $R_G = 5\text{k}\Omega$		600		mV
Gain A_V	Adjustable Gain Setting ⁽⁵⁾	$V_{\text{CM}} = 12\text{V}$	1		100	V/V
G_m	Transconductance	$V_{\text{CM}} = 2.1\text{V}$		200		$\mu\text{A}/\text{V}$
	Accuracy	$V_{\text{CM}} = 2.1\text{V}$	-2 -3.4		2 3.4	%
	G_m drift ⁽⁵⁾	-40°C to 125°C , $V_{\text{CM}} = 2.1\text{V}$			140	$\text{ppm}/^\circ\text{C}$
PSRR	Power Supply Rejection Ratio	$V_{\text{CM}} = 2.1\text{V}$, $2.7\text{V} < V^+ < 12\text{V}$	90			dB
CMRR	Common Mode Rejection Ratio	LMP8645HV $2.1\text{V} < V_{\text{CM}} < 76\text{V}$ LMP8645 $2.1\text{V} < V_{\text{CM}} < 42\text{V}$	95			dB
		$-2\text{V} < V_{\text{CM}} < 2\text{V}$	60			
BW	-3 dB Bandwidth ⁽⁵⁾	$R_G = 10\text{k}\Omega$, $C_G = 4\text{pF}$, $V_{\text{SENSE}} = 400\text{mV}$, $C_L = 30\text{pF}$, $R_L = 1\text{M}\Omega$		850		kHz
		$R_G = 25\text{k}\Omega$, $C_G = 4\text{pF}$, $V_{\text{SENSE}} = 300\text{mV}$, $C_L = 30\text{pF}$, $R_L = 1\text{M}\Omega$		260		
		$R_G = 50\text{k}\Omega$, $C_G = 4\text{pF}$, $V_{\text{SENSE}} = 300\text{mV}$, $C_L = 30\text{pF}$, $R_L = 1\text{M}\Omega$		140		
SR	Slew Rate ⁽⁷⁾⁽⁵⁾	$V_{\text{CM}} = 5\text{V}$, $C_G = 4\text{pF}$, V_{SENSE} from 100 mV to 500 mV, $C_L = 30\text{pF}$, $R_L = 1\text{M}\Omega$		0.5		V/ μs
I_{S}	Supply Current	$V_{\text{CM}} = 2.1\text{V}$		450	610 780	μA
		$V_{\text{CM}} = -2\text{V}$		2100	2800 3030	
V_{OUT}	Maximum Output Voltage	$V_{\text{CM}} = 5\text{V}$, $R_g = 500\text{k}\Omega$	3.3			V
	Minimum Output Voltage	$V_{\text{CM}} = 2.1\text{V}$			22	mV
I_{OUT}	Output current ⁽⁵⁾	Sourcing, $V_{\text{OUT}} = 1.65\text{V}$, $R_g = 150\text{k}\Omega$		5		mA
		Sinking, $V_{\text{OUT}} = 1.65\text{V}$, $R_g = 150\text{k}\Omega$		5		
C_{LOAD}	Max Output Capacitance Load ⁽⁵⁾			30		pF

- Electrical Table values apply only for factory testing conditions at the temperature indicated. Factory testing conditions result in very limited self-heating of the device such that $T_J = T_A$. No specification of parametric performance is indicated in the electrical tables under conditions of internal self-heating where $T_J > T_A$.
- All limits are specified by testing, design, or statistical analysis.
- Typical values represent the most likely parametric norm at the time of characterization. Actual typical values may vary over time and will also depend on the application and configuration. The typical values are not tested and are not ensured on shipped production material.
- Offset voltage temperature drift is determined by dividing the change in V_{OS} at the temperature extremes by the total temperature change.
- This parameter is specified by design and/or characterization and is not tested in production.
- Positive Bias Current corresponds to current flowing into the device.
- The number specified is the average of rising and falling slew rates and measured at 90% to 10%.

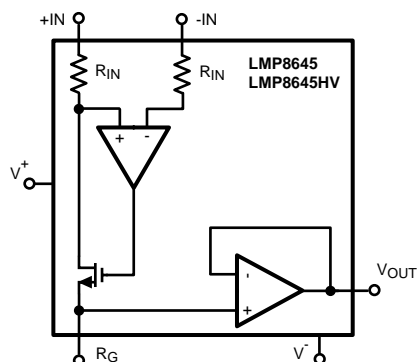
12V Electrical Characteristics⁽¹⁾

Unless otherwise specified, all limits specified for at $T_A = 25^\circ\text{C}$, $V_S = V^+ - V^-$, $V^+ = 12\text{V}$, $V^- = 0\text{V}$, $-2\text{V} < V_{\text{CM}} < 76\text{V}$, $R_g = 25\text{k}\Omega$, $R_L = 10\text{M}\Omega$. **Boldface** limits apply at the temperature extremes.

Symbol	Parameter	Condition	Min ⁽²⁾	Typ ⁽³⁾	Max ⁽²⁾	Units
V_{OS}	Input Offset Voltage	$V_{\text{CM}} = 2.1\text{V}$	-1 -1.7		1 1.7	mV
TCV_{OS}	Input Offset Voltage Drift ⁽⁴⁾⁽⁵⁾	$V_{\text{CM}} = 2.1\text{V}$			7	$\mu\text{V}/^\circ\text{C}$
I_{B}	Input Bias Current ⁽⁶⁾	$V_{\text{CM}} = 2.1\text{V}$		13	23	μA
e_{ni}	Input Voltage Noise ⁽⁵⁾	$f > 10\text{kHz}$, $R_G = 5\text{k}\Omega$		120		$\text{nV}/\sqrt{\text{Hz}}$
$V_{\text{SENSE(MAX)}}$	Max Input Sense Voltage ⁽⁵⁾	$V_{\text{CM}} = 12\text{V}$, $R_G = 5\text{k}\Omega$		600		mV
Gain A_V	Adjustable Gain Setting ⁽⁵⁾	$V_{\text{CM}} = 12\text{V}$	1		100	V/V
G_m	Transconductance	$V_{\text{CM}} = 2.1\text{V}$		200		$\mu\text{A}/\text{V}$
	Accuracy	$V_{\text{CM}} = 2.1\text{V}$	-2 -3.4		2 3.4	%
	G_m drift ⁽⁵⁾	-40°C to 125°C , $V_{\text{CM}} = 2.1\text{V}$			140	$\text{ppm}/^\circ\text{C}$
PSRR	Power Supply Rejection Ratio	$V_{\text{CM}} = 2.1\text{V}$, $2.7\text{V} < V^+ < 12\text{V}$	90			dB
CMRR	Common Mode Rejection Ratio	LMP8645HV $2.1\text{V} < V_{\text{CM}} < 76\text{V}$ LMP8645 $2.1\text{V} < V_{\text{CM}} < 42\text{V}$	95			dB
		$-2\text{V} < V_{\text{CM}} < 2\text{V}$	60			
BW	-3 dB Bandwidth ⁽⁵⁾	$R_G = 10\text{k}\Omega$, $C_G = 4\text{pF}$, $V_{\text{SENSE}} = 400\text{mV}$, $C_L = 30\text{pF}$, $R_L = 1\text{M}\Omega$		860		kHz
		$R_G = 25\text{k}\Omega$, $C_G = 4\text{pF}$, $V_{\text{SENSE}} = 400\text{mV}$, $C_L = 30\text{pF}$, $R_L = 1\text{M}\Omega$		260		
		$R_G = 50\text{k}\Omega$, $C_G = 4\text{pF}$, $V_{\text{SENSE}} = 400\text{mV}$, $C_L = 30\text{pF}$, $R_L = 1\text{M}\Omega$		140		
SR	Slew Rate ^{(7) (5)}	$V_{\text{CM}} = 5\text{V}$, $C_G = 4\text{pF}$, V_{SENSE} from 100 mV to 500 mV, $C_L = 30\text{pF}$, $R_L = 1\text{M}\Omega$		0.6		V/ μs
I_{S}	Supply Current	$V_{\text{CM}} = 2.1\text{V}$		555	765 920	μA
		$V_{\text{CM}} = -2\text{V}$		2200	2900 3110	
V_{OUT}	Maximum Output Voltage	$V_{\text{CM}} = 12\text{V}$, $R_G = 500\text{k}\Omega$	10.2			V
	Minimum Output Voltage	$V_{\text{CM}} = 2.1\text{V}$			24	mV
I_{OUT}	Output current ⁽⁵⁾	Sourcing, $V_{\text{OUT}} = 5.25\text{V}$, $R_g = 150\text{k}\Omega$		5		mA
		Sinking, $V_{\text{OUT}} = 5.25\text{V}$, $R_g = 150\text{k}\Omega$		5		
C_{LOAD}	Max Output Capacitance Load ⁽⁵⁾			30		pF

- (1) Electrical Table values apply only for factory testing conditions at the temperature indicated. Factory testing conditions result in very limited self-heating of the device such that $T_J = T_A$. No specification of parametric performance is indicated in the electrical tables under conditions of internal self-heating where $T_J > T_A$.
- (2) All limits are specified by testing, design, or statistical analysis.
- (3) Typical values represent the most likely parametric norm at the time of characterization. Actual typical values may vary over time and will also depend on the application and configuration. The typical values are not tested and are not ensured on shipped production material.
- (4) Offset voltage temperature drift is determined by dividing the change in V_{OS} at the temperature extremes by the total temperature change.
- (5) This parameter is specified by design and/or characterization and is not tested in production.
- (6) Positive Bias Current corresponds to current flowing into the device.
- (7) The number specified is the average of rising and falling slew rates and measured at 90% to 10%.

BLOCK DIAGRAM



Connection Diagram

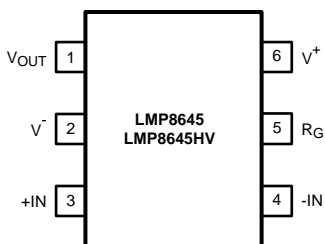


Figure 1. 6-Pin SOT Top View

PIN DESCRIPTIONS

Pin	Name	Description
1	V _{OUT}	Single Ended Output
2	V ⁻	Negative Supply Voltage
3	+IN	Positive Input
4	-IN	Negative Input
5	R _G	External Gain Resistor
6	V ⁺	Positive Supply Voltage

Typical Performance Characteristics

Unless otherwise specified: $T_A = 25^\circ\text{C}$, $V_S = V^+ - V^-$, $V_{\text{SENSE}} = +\text{IN} - (-\text{IN})$, $R_L = 10\text{ M}\Omega$.

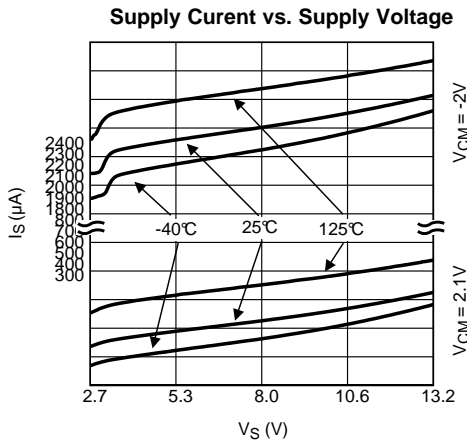


Figure 2.

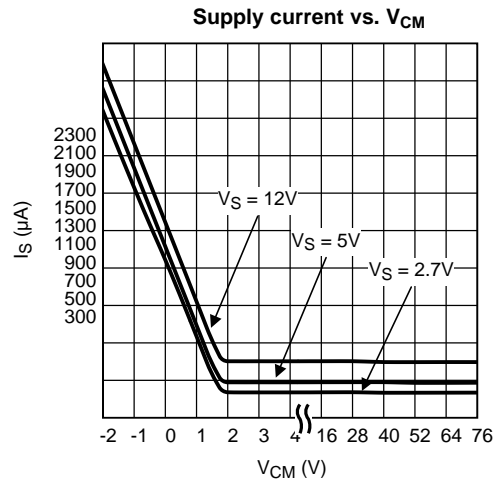


Figure 3.

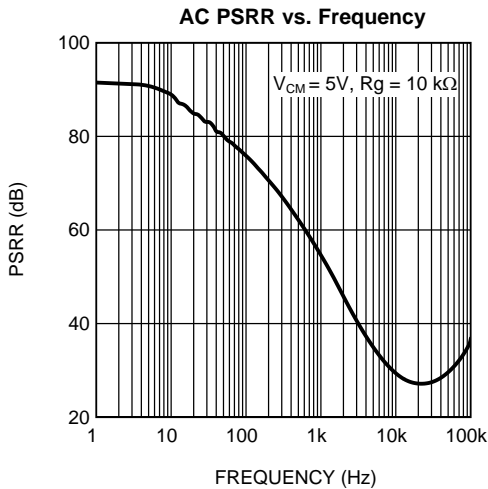


Figure 4.

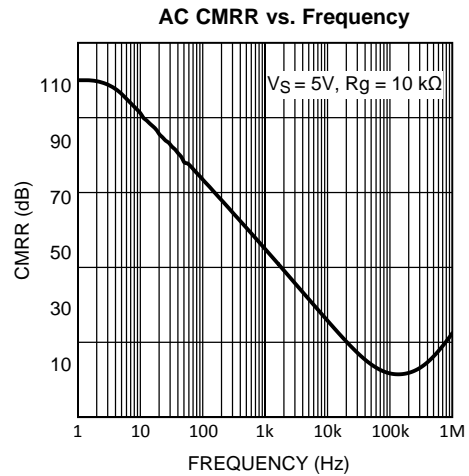


Figure 5.

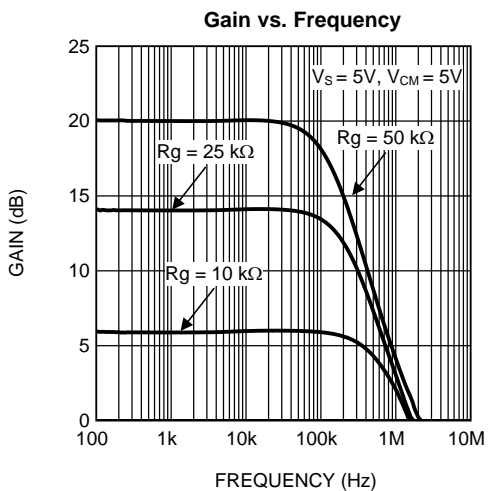


Figure 6.

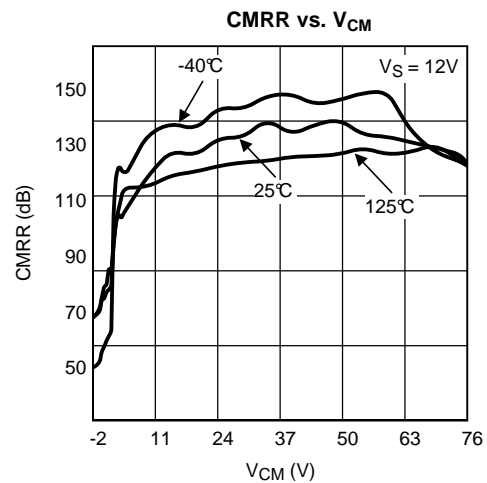


Figure 7.

Typical Performance Characteristics (continued)

Unless otherwise specified: $T_A = 25^\circ\text{C}$, $V_S = V^+ - V^-$, $V_{\text{SENSE}} = +\text{IN} - (-\text{IN})$, $R_L = 10\text{ M}\Omega$.

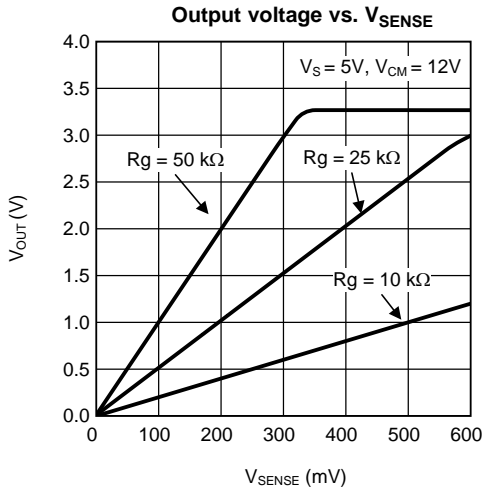


Figure 8.

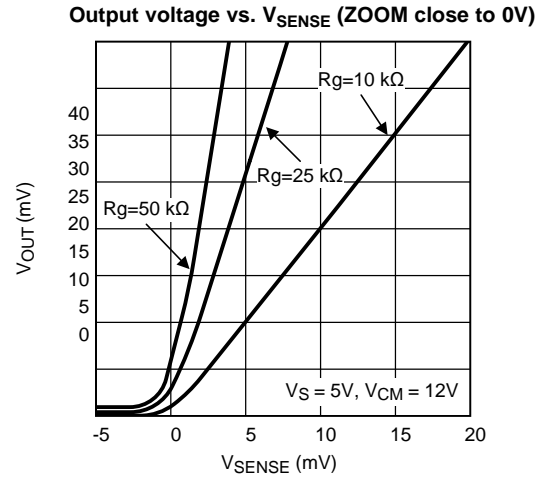


Figure 9.

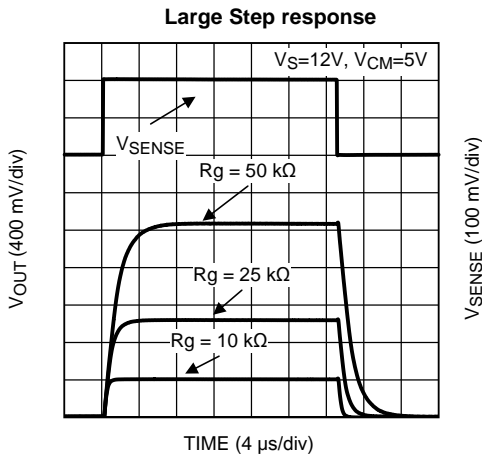


Figure 10.

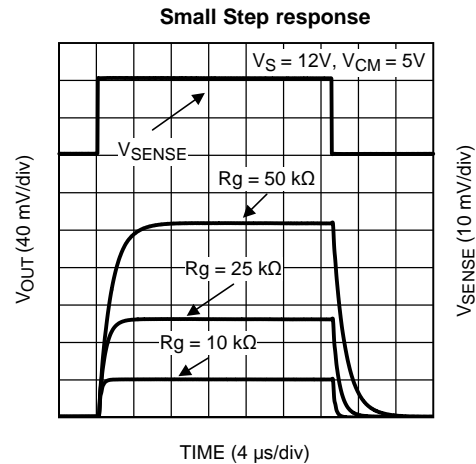


Figure 11.

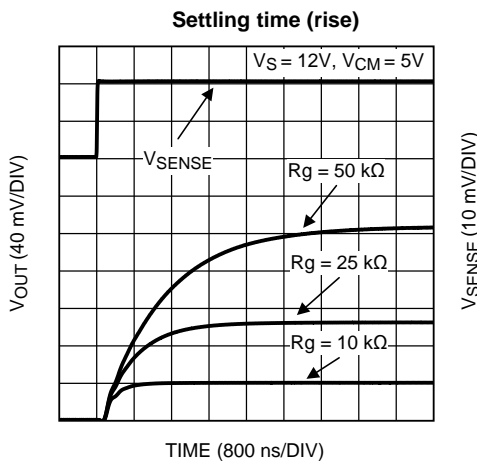


Figure 12.

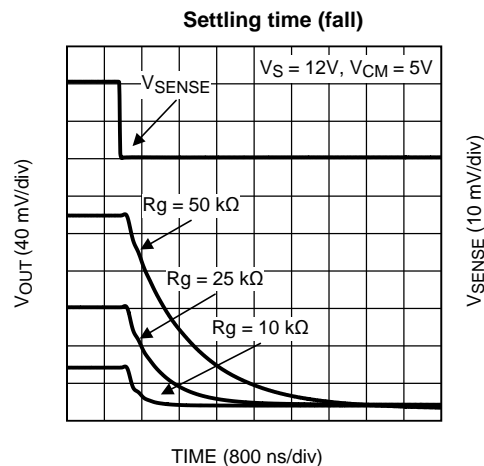


Figure 13.

Typical Performance Characteristics (continued)

Unless otherwise specified: $T_A = 25^\circ\text{C}$, $V_S = V^+ - V^-$, $V_{\text{SENSE}} = +\text{IN} - (-\text{IN})$, $R_L = 10\text{ M}\Omega$.

Common mode step response (rise)

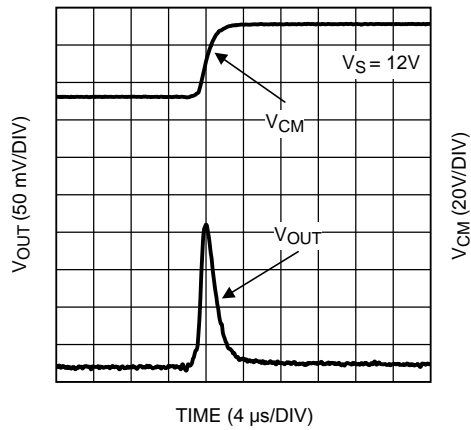


Figure 14.

Common mode step response (fall)

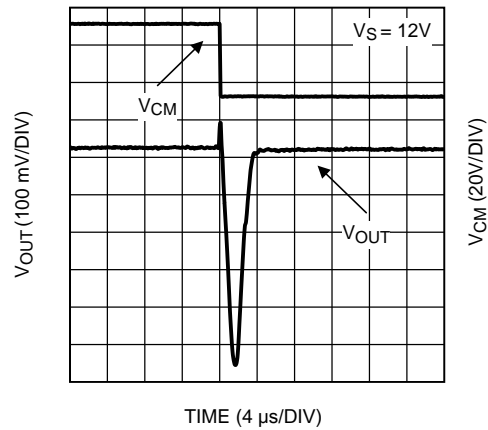


Figure 15.

APPLICATION INFORMATION

GENERAL

The LMP8645 and LMP8645HV are single supply high side current sense amplifiers with variable gain selected through an external resistor and a common mode voltage Range of -2V to 42V or -2V to 76V depending on the grade.

The sense voltage is amplified by a user-selected gain and level shifted from the positive power supply to a ground-referred output.

THEORY OF OPERATION

As seen from the picture below, the current flowing through R_S develops a voltage drop equal to V_{SENSE} across R_S . The high impedance inputs of the amplifier doesn't conduct this current and the high open loop gain of the sense amplifier forces its non-inverting input to the same voltage as the inverting input. In this way the voltage drop across R_{IN} matches V_{SENSE} . A current proportional to I_S according to the following relation:

$$I_{S'} = V_{SENSE}/R_{IN} = R_S * I_S / R_{IN}, \text{ where } R_{IN} = 1/G_m \quad (1)$$

flows entirely in the external gain resistor developing a voltage drop equal to

$$V_G = I_{S'} * R_{GAIN} = (V_{SENSE}/R_{IN}) * R_{GAIN} = ((R_S * I_S)/R_{IN}) * R_{GAIN} \quad (2)$$

This voltage is buffered and showed at the output with a very low impedance allowing a very easy interface of the LMP8645 with other ICs (ADC, $\mu C...$).

$$V_{OUT} = (R_S * I_S) * G, \text{ where } G = R_{GAIN}/R_{IN} \quad (3)$$

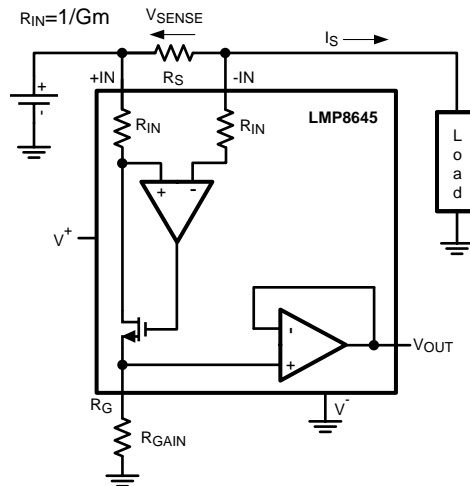


Figure 16. Current monitor

SELECTION OF THE SHUNT RESISTOR

The accuracy of the current measurement strictly depends on the value of the shunt resistor R_S . Its value depends on the application and it is a compromise between small-signal accuracy and maximum permissible voltage loss in the measurement section. High values of R_S provide better accuracy at lower currents by minimizing the effects of offset, while low values of R_S minimize voltage loss in the supply section. For most applications, best performance is obtained with an R_S value that provides a full-scale shunt voltage Range of 100 mV to 200 mV.

SELECTION OF THE GAIN RESISTOR

In the LMP8645 and LMP8645HV the gain is selected through an external resistor connected to the R_G pin. Moreover the gain resistor R_{GAIN} determines the voltage of the output buffer which is related to the supply voltage and to the common mode voltage of the input signal. The gain resistor must be chosen such that the max output voltage does not exceed the LMP8645 max output voltage rating for a given common mode voltage.

The following equations explain how to select the gain resistor for various Range of the input common mode voltage.

$$\text{Range 1 } -2V < V_{CM} \leq 1.8V \tag{4}$$

The max voltage at the RG pin is given by the following inequality $V_{RG} = V_{sense} * R_{GAIN} * G_m \leq \min(1.3V; V_{out_max})$ where V_{out_max} is the maximum allowable output voltage according to the Electrical Tables. All the gain resistors (R_{GAIN}) which respect the previous inequality are allowed. The graphical representation in Figure 17 helps in the selection; all the combinations (V_{SENSE} , R_{GAIN}) below the curve are allowed.

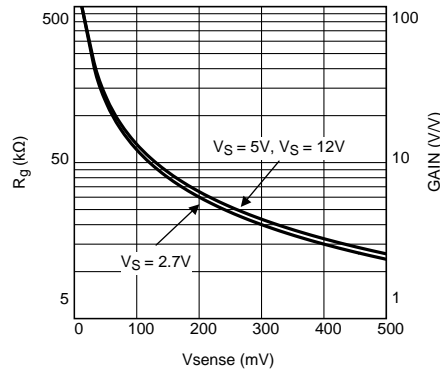


Figure 17. Allowed Gains for Range 1

As a consequence once selected the gain (R_{GAIN}) the V_{SENSE} Range is fixed too. For example if an application required a Gain of 10, R_G will be 50 kΩ and V_{SENSE} will be in the Range 10 mV to 100 mV.

$$\text{Range 2 } 1.8V < V_{CM} \leq V_S \tag{5}$$

In this Range the max voltage at the RG pin is related to the common mode voltage and V_{SENSE} . So all the R_{GAIN} resistors which respect the following inequalities are allowed:

$$V_{RG} \leq \min(V_{out_max}; (V_{CM} - V_{sense} - 250mV))$$

where

- $V_{RG} = V_{SENSE} * R_{GAIN} * G_m$
- V_{out_max} is the maximum allowable output voltage according to the Electrical Tables. (6)

The graphical representation in Figure 18 helps in the selection; all the combinations (V_{SENSE} , R_{GAIN}) below the curves for given V_{CM} and supply voltage are allowed.

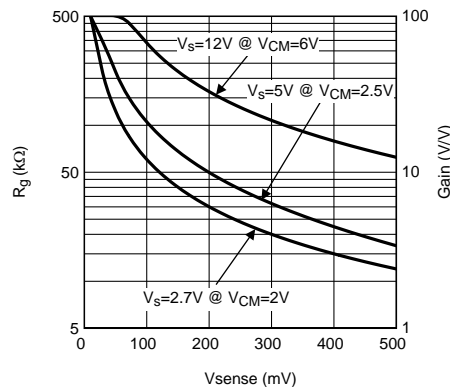


Figure 18. Allowed Gains for Range 2

Also in this Range once selected the R_{GAIN} (Gain) the V_{SENSE} Range is fixed too.

$$\text{Range 3 } V_{CM} \geq V_S \tag{7}$$

The max voltage at the R_G pin is V_{out_max} , it means that $V_{OUT} = V_{SENSE} * R_{GAIN}/R_{IN} \leq V_{out_max}$ where V_{out_max} is the maximum allowable output voltage according to the Electrical Tables. So all the R_{GAIN} resistors which respect the previous inequality are allowed. The graphical representation in [Figure 19](#) helps in the selection; all the combinations (V_{SENSE} , R_{GAIN}) below the curves are allowed.

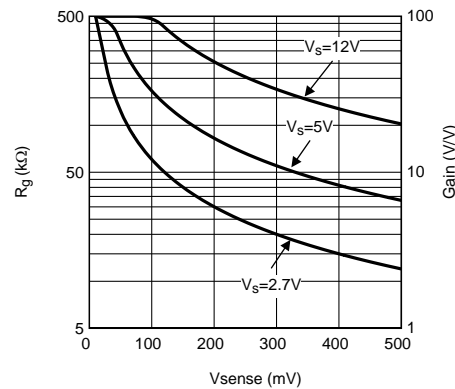


Figure 19. Allowed Gains for Range 3

Also in this Range once selected the R_{GAIN} (Gain) the V_{SENSE} Range is fixed too.

From the Ranges showed above a good way to maximize the output voltage swing of the LMP8645 is to select the max allowable Rgain according to the previous equations. For a fixed supply voltage and Vsense as the common mode voltage increases, the max allowable Rgain increases too.

DESIGN GUIDELINE

Example 1

The LMP8645 is used to monitor the current supply of an active device (Refer to [Figure 20](#)). The LMP8645 is supplied at 5V the active device is supplied at 12V and the max current sunk is 1A. In this example the LMP8645 will work in all 3 Ranges: in Range 1 at the turning on of the active device, then in Range 3 passing through the Range 2. Since the purpose of the application is monitor the current of the active device in any operating state working condition (power on, normal operation, etc.), the gain resistor will be selected according to the Range 1, the Range which gives more constraints to the output dynamic voltage of the LMP8645.

At the startup of the monitored device the LMP8645 works at 0V common mode, it means that its max output is 1.3V (Range 1). In order to maximize the resolution the Rsense is calculated as max allowed Vsense (Refer to [Figure 17](#)) divided by max current (1A), so $R_{sense}=0.5\Omega$. Due to the output limitation the max allowed gain will be 2.6V/V so $R_{GAIN}=13k\Omega$. With this approach the current is monitored at any working condition but without using the entire output dynamic of the LMP8645. Alternatively if the monitored device doesn't sink 1A at any supply voltage, it is possible to design considering the max output voltage of the LMP8645 when operating in Range 3 ($V_{CM} \geq V_S$). Also in this case is possible to maximize the resolution using $R_{sense}=0.5\Omega$, and maximize the output dynamic with $R_{gain}=33k\Omega$. With this approach the max detectable current when V_{CM} is less than 1,8V is about 400mA, while for $V_{CM}=2.5V$ the max detectable current is 600mA (Refer to [Figure 17](#)) and for $V_{CM} \geq V_S$ is 1A.

The second approach maximizes the output dynamic but implies some knowledge on the monitored current.

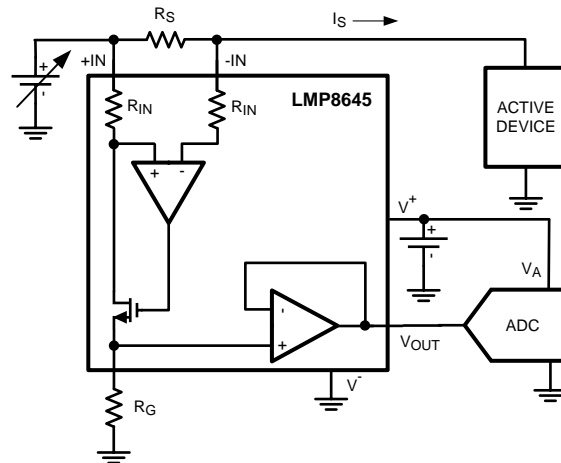


Figure 20. LMP8645 in current monitor application

Example 2

The LMP8645 is used to monitor the current in a high brightness LED application together with LM340x LED drivers. The LMP8645 is supplied at 3.3V and the max voltage at LED's string is 30V, the LED brightness is controlled with the dimming (MOSFET in parallel to the LED). The approach of the high current sense is used especially in automotive application where the cathode of the LED needs to be directly connected to the chassis of the car (Ground of the system). Even though LMP8645 will work in all 3 Ranges as in the previous example, R_{GAIN} will be calculated according to Range 3 because the purpose is regulating the current in the LEDs when the external MOSFET is OFF (LMP8645 at high V_{CM}). Even if this approach makes the LMP8645 able to sense high peak current only in Range 3 where the dynamic output is higher than Range 1 the current resolution is maximized. At each switch ON/OFF of the MOSFET the LMP8645 goes from Range 1 (MOSFET ON, string of LED OFF), to Range 3 (MOSFET OFF, string of LED ON) passing through Range 2 (MOSFET OFF, string of LED OFF). Since the purpose of the application is to sense the current with high precision when the LED string is ON, the R_{GAIN} will be calculated according to the Range 3.

To summarize, the R_{GAIN} will be calculated according to the range of operation in which the application will mainly work. Once selected the range, will be taken in account the more stringent constraint

DRIVING ADC

The input stage of an Analog to Digital converter can be modeled with a resistor and a capacitance versus ground. So if the voltage source doesn't have a low impedance an error in the amplitude's measurement will occur. In this Range a buffer is needed to drive the ADC. The LMP8645 has an internal output buffer able to drive a capacitance load up to 30 pF or the input stage of an ADC. If required an external low pass RC filter can be added at the output of the LMP8645 to reduce the noise and the bandwidth of the current sense. Any other filter solution which implies a capacitance connected to the R_G pin is not suggested due to the high impedance of that pin.

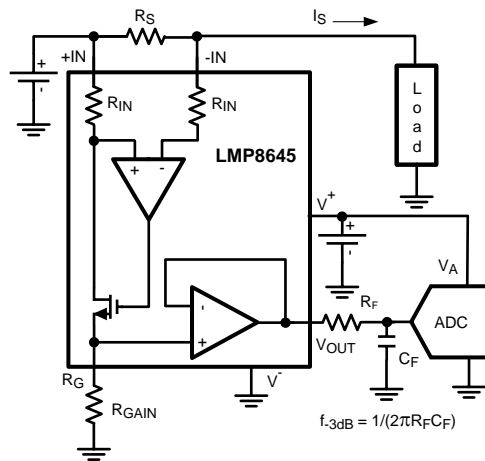


Figure 21. LMP8645 to ADC interface

SENSING CURRENT IN LED DRIVER APPLICATIONS

The LMP8645 is the right choice in the applications which requires high side current sense, such as High Brightness LED for automotive where the LED's cathode has to be connected to the Range (ground) of the car. In this Range the classical low side current sense with a shunt resistor connected between the LED's cathode and the Range doesn't specify the ground connection. In Figure 22, the LMP8645 monitors the current for the LM3406 a constant current buck regulator. The LMP8645 is supplied by the internal LDO of the LM3406 through the pin VCC, the current which flows in the LED is programmed according the following formula: $I_F = V_{CS} / (R_S * Gain)$, where $Gain = R_{GAIN} * G_m$ and $V_{CS} = 200$ mV. In this application the current which flows in the HB LED is in the Range between 350 mA and 1A, so in order to reduce the power dissipation on the shunt resistor and have a good accuracy, the R_S should be in the Range between 50 mΩ and 200 mΩ. In the table below two examples are analyzed.

	$I_F = 350$ mA	$I_F = 1$ A
R_{GAIN}	40kΩ	36kΩ
R_S	77mΩ	27mΩ
Dissipated Power	9.5mW	27mW
Total Accuracy	≈5%	≈5%

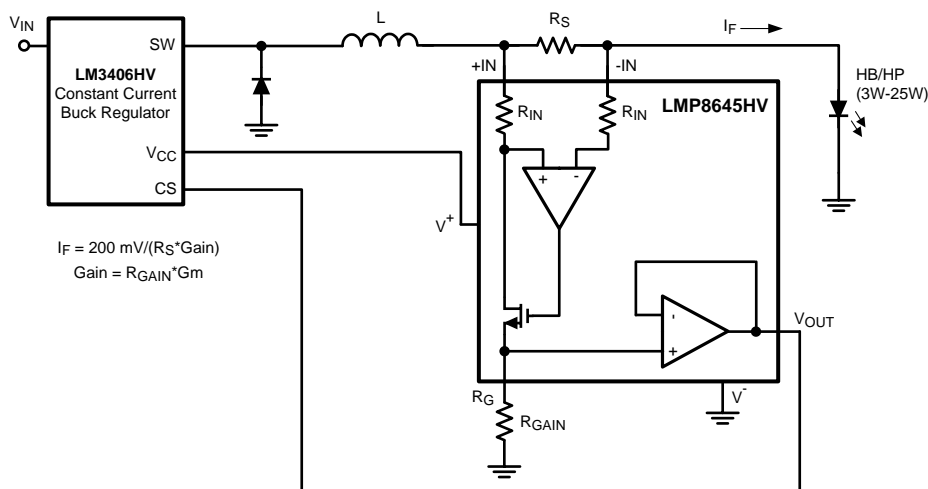


Figure 22. High Side Current Sensing in Driving HP/HB LED

REVISION HISTORY

Changes from Revision E (March 2013) to Revision F	Page
• Changed layout of National Data Sheet to TI format	14

PACKAGING INFORMATION

Orderable Device	Status (1)	Package Type	Package Drawing	Pins	Package Qty	Eco Plan (2)	Lead/Ball Finish	MSL Peak Temp (3)	Op Temp (°C)	Top-Side Markings (4)	Samples
LMP8645HVMK/NOPB	ACTIVE	SOT	DDC	6	1000	Green (RoHS & no Sb/Br)	CU NIPDAU	Level-1-260C-UNLIM	-40 to 125	AK6A	Samples
LMP8645HVMKE/NOPB	ACTIVE	SOT	DDC	6	250	Green (RoHS & no Sb/Br)	CU NIPDAU	Level-1-260C-UNLIM	-40 to 125	AK6A	Samples
LMP8645HVMKX/NOPB	ACTIVE	SOT	DDC	6	3000	Green (RoHS & no Sb/Br)	CU NIPDAU	Level-1-260C-UNLIM	-40 to 125	AK6A	Samples
LMP8645MK/NOPB	ACTIVE	SOT	DDC	6	1000	Green (RoHS & no Sb/Br)	CU NIPDAU	Level-1-260C-UNLIM	-40 to 125	AJ6A	Samples
LMP8645MKE/NOPB	ACTIVE	SOT	DDC	6	250	Green (RoHS & no Sb/Br)	CU NIPDAU	Level-1-260C-UNLIM	-40 to 125	AJ6A	Samples
LMP8645MKX/NOPB	ACTIVE	SOT	DDC	6	3000	Green (RoHS & no Sb/Br)	CU NIPDAU	Level-1-260C-UNLIM	-40 to 125	AJ6A	Samples

(1) The marketing status values are defined as follows:

ACTIVE: Product device recommended for new designs.

LIFEBUY: TI has announced that the device will be discontinued, and a lifetime-buy period is in effect.

NRND: Not recommended for new designs. Device is in production to support existing customers, but TI does not recommend using this part in a new design.

PREVIEW: Device has been announced but is not in production. Samples may or may not be available.

OBSELETE: TI has discontinued the production of the device.

(2) Eco Plan - The planned eco-friendly classification: Pb-Free (RoHS), Pb-Free (RoHS Exempt), or Green (RoHS & no Sb/Br) - please check <http://www.ti.com/productcontent> for the latest availability information and additional product content details.

TBD: The Pb-Free/Green conversion plan has not been defined.

Pb-Free (RoHS): TI's terms "Lead-Free" or "Pb-Free" mean semiconductor products that are compatible with the current RoHS requirements for all 6 substances, including the requirement that lead not exceed 0.1% by weight in homogeneous materials. Where designed to be soldered at high temperatures, TI Pb-Free products are suitable for use in specified lead-free processes.

Pb-Free (RoHS Exempt): This component has a RoHS exemption for either 1) lead-based flip-chip solder bumps used between the die and package, or 2) lead-based die adhesive used between the die and leadframe. The component is otherwise considered Pb-Free (RoHS compatible) as defined above.

Green (RoHS & no Sb/Br): TI defines "Green" to mean Pb-Free (RoHS compatible), and free of Bromine (Br) and Antimony (Sb) based flame retardants (Br or Sb do not exceed 0.1% by weight in homogeneous material)

(3) MSL, Peak Temp. -- The Moisture Sensitivity Level rating according to the JEDEC industry standard classifications, and peak solder temperature.

(4) Multiple Top-Side Markings will be inside parentheses. Only one Top-Side Marking contained in parentheses and separated by a "~" will appear on a device. If a line is indented then it is a continuation of the previous line and the two combined represent the entire Top-Side Marking for that device.

Important Information and Disclaimer: The information provided on this page represents TI's knowledge and belief as of the date that it is provided. TI bases its knowledge and belief on information provided by third parties, and makes no representation or warranty as to the accuracy of such information. Efforts are underway to better integrate information from third parties. TI has taken and continues to take reasonable steps to provide representative and accurate information but may not have conducted destructive testing or chemical analysis on incoming materials and chemicals. TI and TI suppliers consider certain information to be proprietary, and thus CAS numbers and other limited information may not be available for release.

In no event shall TI's liability arising out of such information exceed the total purchase price of the TI part(s) at issue in this document sold by TI to Customer on an annual basis.

TAPE AND REEL INFORMATION

QUADRANT ASSIGNMENTS FOR PIN 1 ORIENTATION IN TAPE


*All dimensions are nominal

Device	Package Type	Package Drawing	Pins	SPQ	Reel Diameter (mm)	Reel Width W1 (mm)	A0 (mm)	B0 (mm)	K0 (mm)	P1 (mm)	W (mm)	Pin1 Quadrant
LMP8645HVMK/NOPB	SOT	DDC	6	1000	178.0	8.4	3.2	3.2	1.4	4.0	8.0	Q3
LMP8645HVMKE/NOPB	SOT	DDC	6	250	178.0	8.4	3.2	3.2	1.4	4.0	8.0	Q3
LMP8645HVMKX/NOPB	SOT	DDC	6	3000	178.0	8.4	3.2	3.2	1.4	4.0	8.0	Q3
LMP8645MK/NOPB	SOT	DDC	6	1000	178.0	8.4	3.2	3.2	1.4	4.0	8.0	Q3
LMP8645MKE/NOPB	SOT	DDC	6	250	178.0	8.4	3.2	3.2	1.4	4.0	8.0	Q3
LMP8645MKX/NOPB	SOT	DDC	6	3000	178.0	8.4	3.2	3.2	1.4	4.0	8.0	Q3

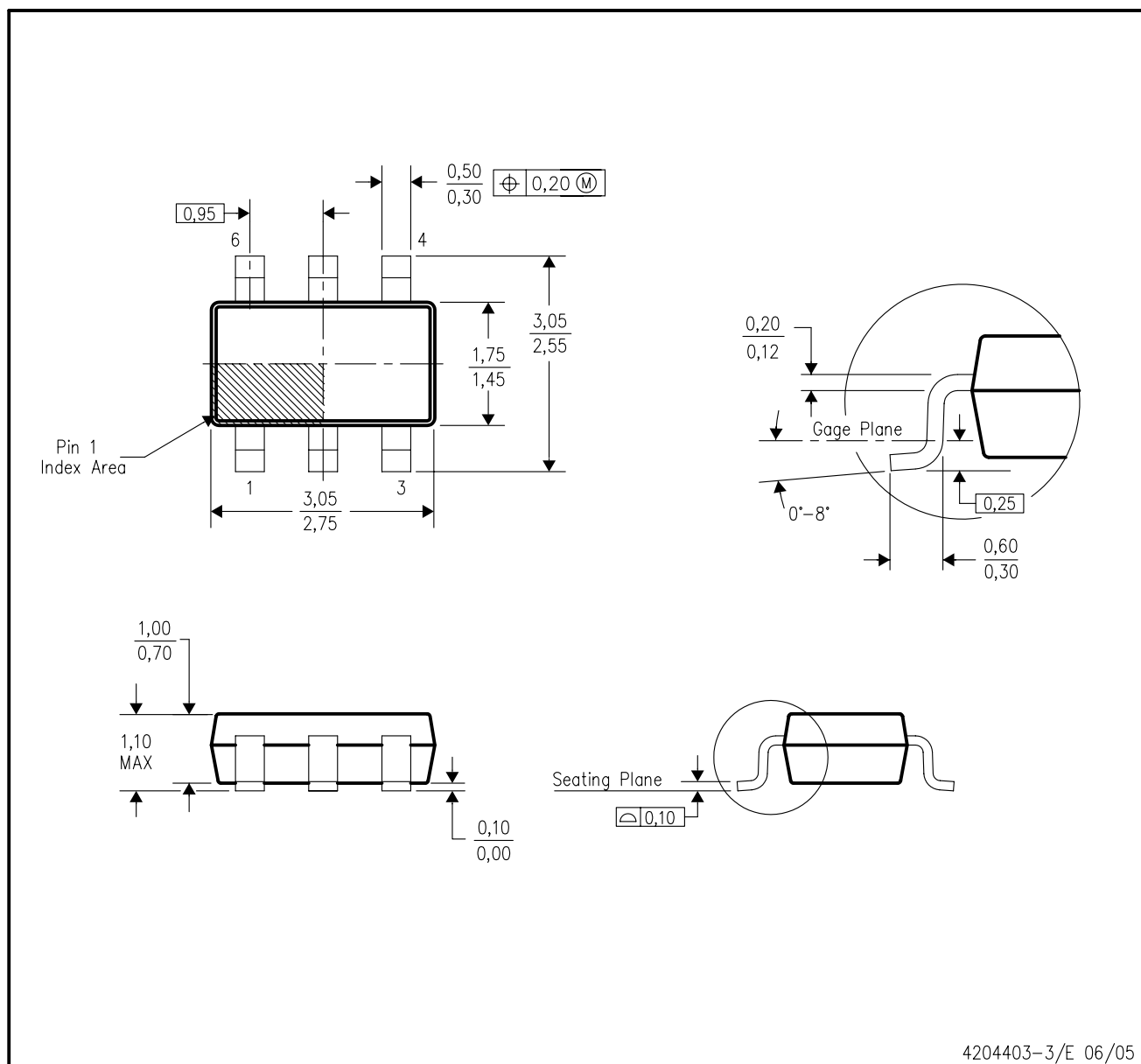
TAPE AND REEL BOX DIMENSIONS


*All dimensions are nominal

Device	Package Type	Package Drawing	Pins	SPQ	Length (mm)	Width (mm)	Height (mm)
LMP8645HVMK/NOPB	SOT	DDC	6	1000	210.0	185.0	35.0
LMP8645HVMKE/NOPB	SOT	DDC	6	250	210.0	185.0	35.0
LMP8645HVMKX/NOPB	SOT	DDC	6	3000	210.0	185.0	35.0
LMP8645MK/NOPB	SOT	DDC	6	1000	210.0	185.0	35.0
LMP8645MKE/NOPB	SOT	DDC	6	250	210.0	185.0	35.0
LMP8645MKX/NOPB	SOT	DDC	6	3000	210.0	185.0	35.0

DDC (R-PDSO-G6)

PLASTIC SMALL-OUTLINE



- NOTES:
- All linear dimensions are in millimeters.
 - This drawing is subject to change without notice.
 - Body dimensions do not include mold flash or protrusion.
 - Falls within JEDEC MO-193 variation AA (6 pin).

IMPORTANT NOTICE

Texas Instruments Incorporated and its subsidiaries (TI) reserve the right to make corrections, enhancements, improvements and other changes to its semiconductor products and services per JESD46, latest issue, and to discontinue any product or service per JESD48, latest issue. Buyers should obtain the latest relevant information before placing orders and should verify that such information is current and complete. All semiconductor products (also referred to herein as "components") are sold subject to TI's terms and conditions of sale supplied at the time of order acknowledgment.

TI warrants performance of its components to the specifications applicable at the time of sale, in accordance with the warranty in TI's terms and conditions of sale of semiconductor products. Testing and other quality control techniques are used to the extent TI deems necessary to support this warranty. Except where mandated by applicable law, testing of all parameters of each component is not necessarily performed.

TI assumes no liability for applications assistance or the design of Buyers' products. Buyers are responsible for their products and applications using TI components. To minimize the risks associated with Buyers' products and applications, Buyers should provide adequate design and operating safeguards.

TI does not warrant or represent that any license, either express or implied, is granted under any patent right, copyright, mask work right, or other intellectual property right relating to any combination, machine, or process in which TI components or services are used. Information published by TI regarding third-party products or services does not constitute a license to use such products or services or a warranty or endorsement thereof. Use of such information may require a license from a third party under the patents or other intellectual property of the third party, or a license from TI under the patents or other intellectual property of TI.

Reproduction of significant portions of TI information in TI data books or data sheets is permissible only if reproduction is without alteration and is accompanied by all associated warranties, conditions, limitations, and notices. TI is not responsible or liable for such altered documentation. Information of third parties may be subject to additional restrictions.

Resale of TI components or services with statements different from or beyond the parameters stated by TI for that component or service voids all express and any implied warranties for the associated TI component or service and is an unfair and deceptive business practice. TI is not responsible or liable for any such statements.

Buyer acknowledges and agrees that it is solely responsible for compliance with all legal, regulatory and safety-related requirements concerning its products, and any use of TI components in its applications, notwithstanding any applications-related information or support that may be provided by TI. Buyer represents and agrees that it has all the necessary expertise to create and implement safeguards which anticipate dangerous consequences of failures, monitor failures and their consequences, lessen the likelihood of failures that might cause harm and take appropriate remedial actions. Buyer will fully indemnify TI and its representatives against any damages arising out of the use of any TI components in safety-critical applications.

In some cases, TI components may be promoted specifically to facilitate safety-related applications. With such components, TI's goal is to help enable customers to design and create their own end-product solutions that meet applicable functional safety standards and requirements. Nonetheless, such components are subject to these terms.

No TI components are authorized for use in FDA Class III (or similar life-critical medical equipment) unless authorized officers of the parties have executed a special agreement specifically governing such use.

Only those TI components which TI has specifically designated as military grade or "enhanced plastic" are designed and intended for use in military/aerospace applications or environments. Buyer acknowledges and agrees that any military or aerospace use of TI components which have **not** been so designated is solely at the Buyer's risk, and that Buyer is solely responsible for compliance with all legal and regulatory requirements in connection with such use.

TI has specifically designated certain components as meeting ISO/TS16949 requirements, mainly for automotive use. In any case of use of non-designated products, TI will not be responsible for any failure to meet ISO/TS16949.

Products

Audio	www.ti.com/audio
Amplifiers	amplifier.ti.com
Data Converters	dataconverter.ti.com
DLP® Products	www.dlp.com
DSP	dsp.ti.com
Clocks and Timers	www.ti.com/clocks
Interface	interface.ti.com
Logic	logic.ti.com
Power Mgmt	power.ti.com
Microcontrollers	microcontroller.ti.com
RFID	www.ti-rfid.com
OMAP Applications Processors	www.ti.com/omap
Wireless Connectivity	www.ti.com/wirelessconnectivity

Applications

Automotive and Transportation	www.ti.com/automotive
Communications and Telecom	www.ti.com/communications
Computers and Peripherals	www.ti.com/computers
Consumer Electronics	www.ti.com/consumer-apps
Energy and Lighting	www.ti.com/energy
Industrial	www.ti.com/industrial
Medical	www.ti.com/medical
Security	www.ti.com/security
Space, Avionics and Defense	www.ti.com/space-avionics-defense
Video and Imaging	www.ti.com/video

TI E2E Community

e2e.ti.com