

LP311

LP311 Voltage Comparator



Literature Number: SNOSBJ7A

LP311 Voltage Comparator

General Description

The LP311 is a low power version of the industry-standard LM311. It takes advantage of stable high-value ion-implanted resistors to perform the same function as an LM311, with a 30:1 reduction in power drain, but only a 6:1 slowdown of response time. Thus the LP311 is well suited for battery-powered applications, and all other applications where fast response is not needed. It operates over a wide range of supply voltages from 36V down to a single 3V supply, with less than 200 μ A drain, but it is still capable of driving a 25 mA load. The LP311 is quite easy to apply without any oscillation, if ordinary precautions are taken to minimize stray coupling from the output to either input or to the balance pins (as described in the LM311 datasheet Application Hints).

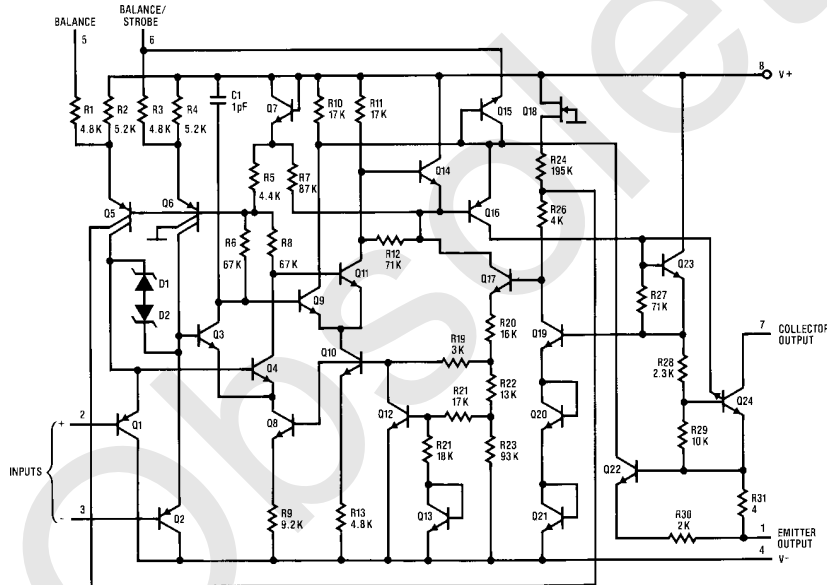
Features

- Low power drain, 900 μ W on 5V supply
- Operates from ± 15 V or a single supply as low as 3V
- Output can drive 25 mA
- Emitter output can swing below negative supply
- Response time: 1.2 μ s
- Same pin-out as LM311
- Low input currents: 2 nA of offset, 15 nA of bias
- Large common-mode input range: -14.6 V to 13.6V with ± 15 V supply

Applications

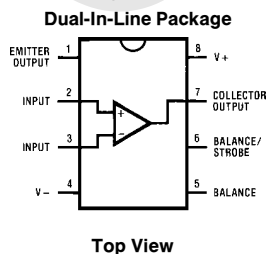
- Level-detector for battery-powered instruments
- Low-power lamp or relay driver
- Low-power zero-crossing detector

Schematic Diagram



TL/H/5711-7

Connection Diagram



TL/H/5711-4

Order Number LP311M or LP311N
See NS Package Numbers M08A or N08E

Absolute Maximum Ratings

If Military/Aerospace specified devices are required, please contact the National Semiconductor Sales Office/Distributors for availability and specifications.

Total Supply Voltage (V_{8-4})	36V
Collector Output to Negative Supply Voltage (V_{7-4})	40V
Collector Output to Emitter Output	40V
Emitter Output to Negative Supply Voltage (V_{1-4})	$\pm 30V$
Differential Input Voltage	$\pm 30V$
Input Voltage (Note 1)	$\pm 15V$

Power Dissipation (Note 2)	500 mW
Output Short Circuit Duration	10 sec
Operating Temperature Range	0°C to 70°C
Storage Temperature Range	-65°C to 150°C
Lead Temperature (Soldering, 10 seconds)	260°C

Electrical Characteristics

These specifications apply for $V_S = \pm 15V$ and $0^\circ C \leq T_A \leq 70^\circ C$, unless otherwise specified.

Parameter	Conditions	Min	Typ	Max	Units
Input Offset Voltage (Notes 3, 4)	$T_A = 25^\circ C, R_S \leq 100k$		2.0	7.5	mV
Input Offset Current (Notes 3, 4)	$T_A = 25^\circ C$		2.0	25	nA
Input Bias Current (Note 3)	$T_A = 25^\circ C$		15	100	nA
Voltage Gain	$T_A = 25^\circ C, R_L = 5k$	40	200		V/mV
Response Time (Note 5)	$T_A = 25^\circ C$		1.2		μs
Saturation Voltage (Note 6)	$V_{IN} \leq -10 mV, I_{OUT} = 25 mA$ $T_A = 25^\circ C$		0.4	1.5	V
Strobe Current (Note 7)	$T_A = 25^\circ C$	100	200	300	μA
Output Leakage Current	$V_{IN} \geq 10 mV, V_{OUT} = 35V$ $T_A = 25^\circ C$		0.2	100	nA
Input Offset Voltage (Notes 3, 4)	$R_S \leq 100k$			10	mV
Input Offset Current (Notes 3, 4)				35	nA
Input Bias Current (Note 3)				150	nA
Input Voltage Range		$V^- + 0.5$	$+13.7, -14.7$	$V^+ - 1.5$	V
Saturation Voltage (Note 6)	$V^+ \geq 4.5V, V^- = 0V$ $V_{IN} \leq -10 mV, I_{SINK} \leq 1.6 mA$		0.1	0.4	V
Positive Supply Current	$T_A = 25^\circ C, \text{Output on}$		150	300	μA
Negative Supply Current	$T_A = 25^\circ C$		80	180	μA
Minimum Operating Voltage	$T_A = 25^\circ C$		3.0	3.5	V

Note 1: This rating applies for $\pm 15V$ supplies. The positive input voltage limit is 30V above the negative supply. The negative input voltage limit is equal to the negative supply voltage or 30V below the positive supply, whichever is less.

Note 2: The maximum junction temperature of the LP311 is 85°C. For operating at elevated temperatures, devices in the dual-in-line package must be derated based on a thermal resistance of 160°C/W, junction to ambient.

Note 3: The offset voltage, offset current and bias current specifications apply for any supply voltage from a single 4V supply up to $\pm 15V$ supplies.

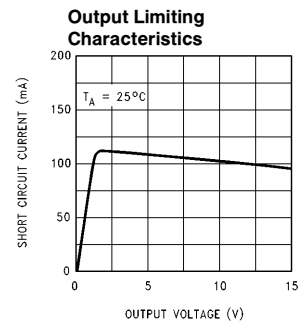
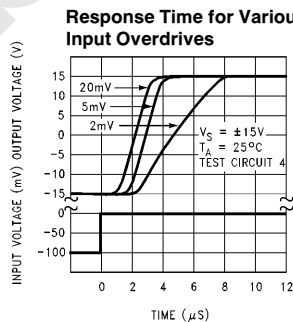
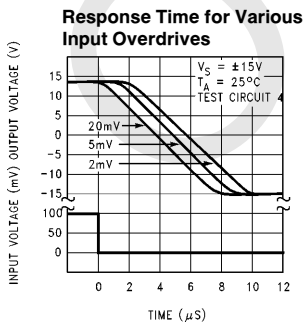
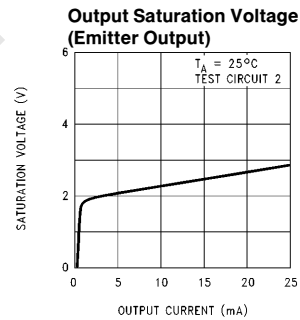
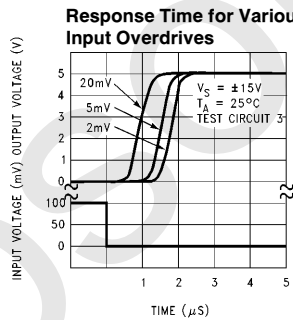
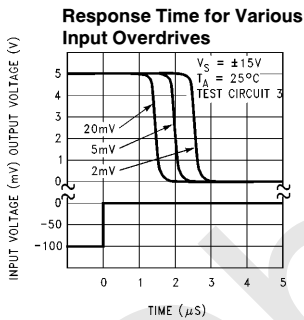
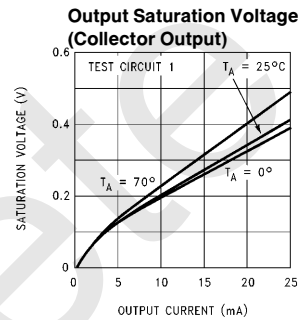
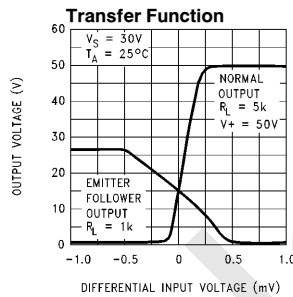
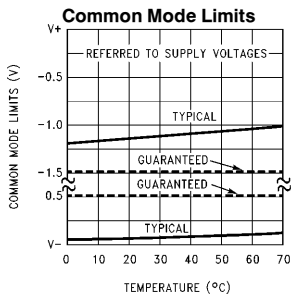
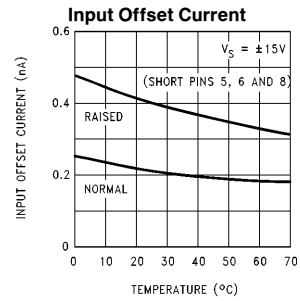
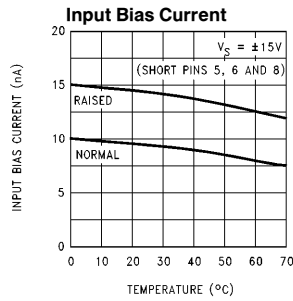
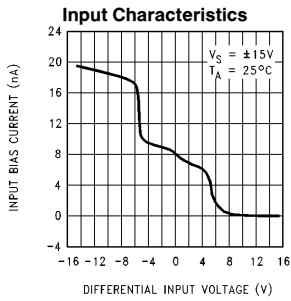
Note 4: The offset voltages and offset currents given are the maximum values required to drive the output within a volt of either supply with 1 mA load. Thus, these parameters define an error band and take into account the worst-case effects of voltage gain and input impedance.

Note 5: The response time specified is for a 100 mV input step with 5 mV overdrive.

Note 6: Saturation voltage specification applies to collector-emitter voltage (V_{7-1}) for $V_{COLLECTOR} \leq (V^+ - 3V)$.

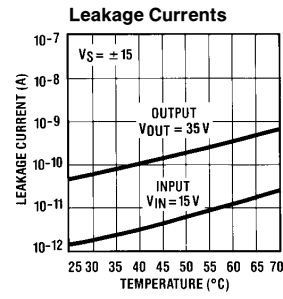
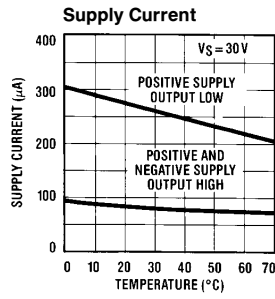
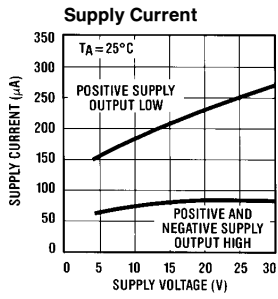
Note 7: This specification gives the range of current which must be drawn from the strobe pin to ensure the output is properly disabled. Do not short the strobe pin to ground. It should be current driven, 100 μA to 300 μA .

Typical Performance Characteristics



TL/H/5711-5

Typical Performance Characteristics (Continued)



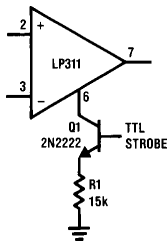
TL/H/5711-6

Applications Information

For applications information and typical applications, refer to the LM311 datasheet.

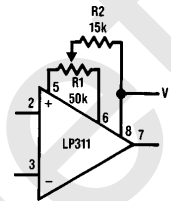
Auxiliary Circuits

Strobing



TL/H/5711-1

Offset Balancing

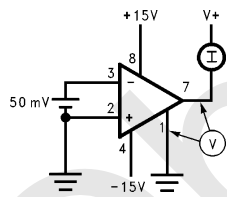


TL/H/5711-2

Note: Do not ground strobe pin.

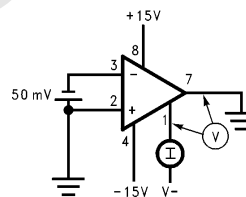
Test Circuits

Test Circuit 1 (Collector Output)



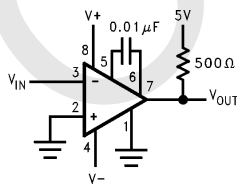
TL/H/5711-8

Test Circuit 2 (Emitter Output)



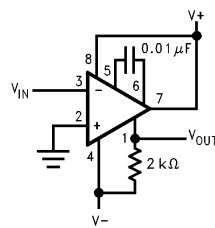
TL/H/5711-9

Test Circuit 3 (Collector Output)



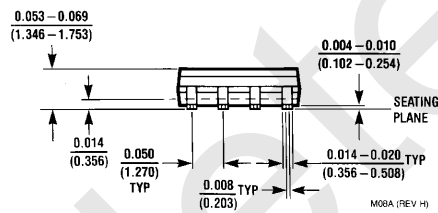
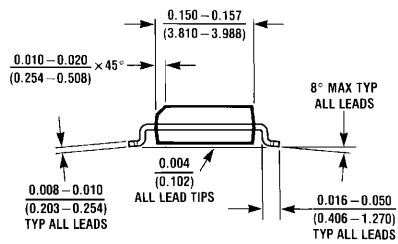
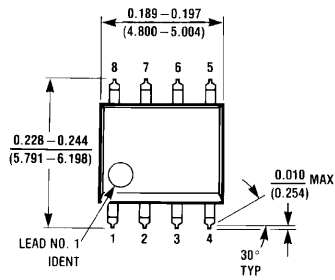
TL/H/5711-10

Test Circuit 4 (Emitter Output)



TL/H/5711-11

Physical Dimensions inches (millimeters)



Order Number LP311M
NS Package Number M08A

IMPORTANT NOTICE

Texas Instruments Incorporated and its subsidiaries (TI) reserve the right to make corrections, modifications, enhancements, improvements, and other changes to its products and services at any time and to discontinue any product or service without notice. Customers should obtain the latest relevant information before placing orders and should verify that such information is current and complete. All products are sold subject to TI's terms and conditions of sale supplied at the time of order acknowledgment.

TI warrants performance of its hardware products to the specifications applicable at the time of sale in accordance with TI's standard warranty. Testing and other quality control techniques are used to the extent TI deems necessary to support this warranty. Except where mandated by government requirements, testing of all parameters of each product is not necessarily performed.

TI assumes no liability for applications assistance or customer product design. Customers are responsible for their products and applications using TI components. To minimize the risks associated with customer products and applications, customers should provide adequate design and operating safeguards.

TI does not warrant or represent that any license, either express or implied, is granted under any TI patent right, copyright, mask work right, or other TI intellectual property right relating to any combination, machine, or process in which TI products or services are used. Information published by TI regarding third-party products or services does not constitute a license from TI to use such products or services or a warranty or endorsement thereof. Use of such information may require a license from a third party under the patents or other intellectual property of the third party, or a license from TI under the patents or other intellectual property of TI.

Reproduction of TI information in TI data books or data sheets is permissible only if reproduction is without alteration and is accompanied by all associated warranties, conditions, limitations, and notices. Reproduction of this information with alteration is an unfair and deceptive business practice. TI is not responsible or liable for such altered documentation. Information of third parties may be subject to additional restrictions.

Resale of TI products or services with statements different from or beyond the parameters stated by TI for that product or service voids all express and any implied warranties for the associated TI product or service and is an unfair and deceptive business practice. TI is not responsible or liable for any such statements.

TI products are not authorized for use in safety-critical applications (such as life support) where a failure of the TI product would reasonably be expected to cause severe personal injury or death, unless officers of the parties have executed an agreement specifically governing such use. Buyers represent that they have all necessary expertise in the safety and regulatory ramifications of their applications, and acknowledge and agree that they are solely responsible for all legal, regulatory and safety-related requirements concerning their products and any use of TI products in such safety-critical applications, notwithstanding any applications-related information or support that may be provided by TI. Further, Buyers must fully indemnify TI and its representatives against any damages arising out of the use of TI products in such safety-critical applications.

TI products are neither designed nor intended for use in military/aerospace applications or environments unless the TI products are specifically designated by TI as military-grade or "enhanced plastic." Only products designated by TI as military-grade meet military specifications. Buyers acknowledge and agree that any such use of TI products which TI has not designated as military-grade is solely at the Buyer's risk, and that they are solely responsible for compliance with all legal and regulatory requirements in connection with such use.

TI products are neither designed nor intended for use in automotive applications or environments unless the specific TI products are designated by TI as compliant with ISO/TS 16949 requirements. Buyers acknowledge and agree that, if they use any non-designated products in automotive applications, TI will not be responsible for any failure to meet such requirements.

Following are URLs where you can obtain information on other Texas Instruments products and application solutions:

Products

Audio	www.ti.com/audio
Amplifiers	amplifier.ti.com
Data Converters	dataconverter.ti.com
DLP® Products	www.dlp.com
DSP	dsp.ti.com
Clocks and Timers	www.ti.com/clocks
Interface	interface.ti.com
Logic	logic.ti.com
Power Mgmt	power.ti.com
Microcontrollers	microcontroller.ti.com
RFID	www.ti-rfid.com
OMAP Mobile Processors	www.ti.com/omap
Wireless Connectivity	www.ti.com/wirelessconnectivity

Applications

Communications and Telecom	www.ti.com/communications
Computers and Peripherals	www.ti.com/computers
Consumer Electronics	www.ti.com/consumer-apps
Energy and Lighting	www.ti.com/energy
Industrial	www.ti.com/industrial
Medical	www.ti.com/medical
Security	www.ti.com/security
Space, Avionics and Defense	www.ti.com/space-avionics-defense
Transportation and Automotive	www.ti.com/automotive
Video and Imaging	www.ti.com/video

TI E2E Community Home Page

e2e.ti.com

Mailing Address: Texas Instruments, Post Office Box 655303, Dallas, Texas 75265
Copyright © 2011, Texas Instruments Incorporated