

## LMX5251 Bluetooth™ CMOS Radio

Check for Samples: [LMX5251](#)

### FEATURES

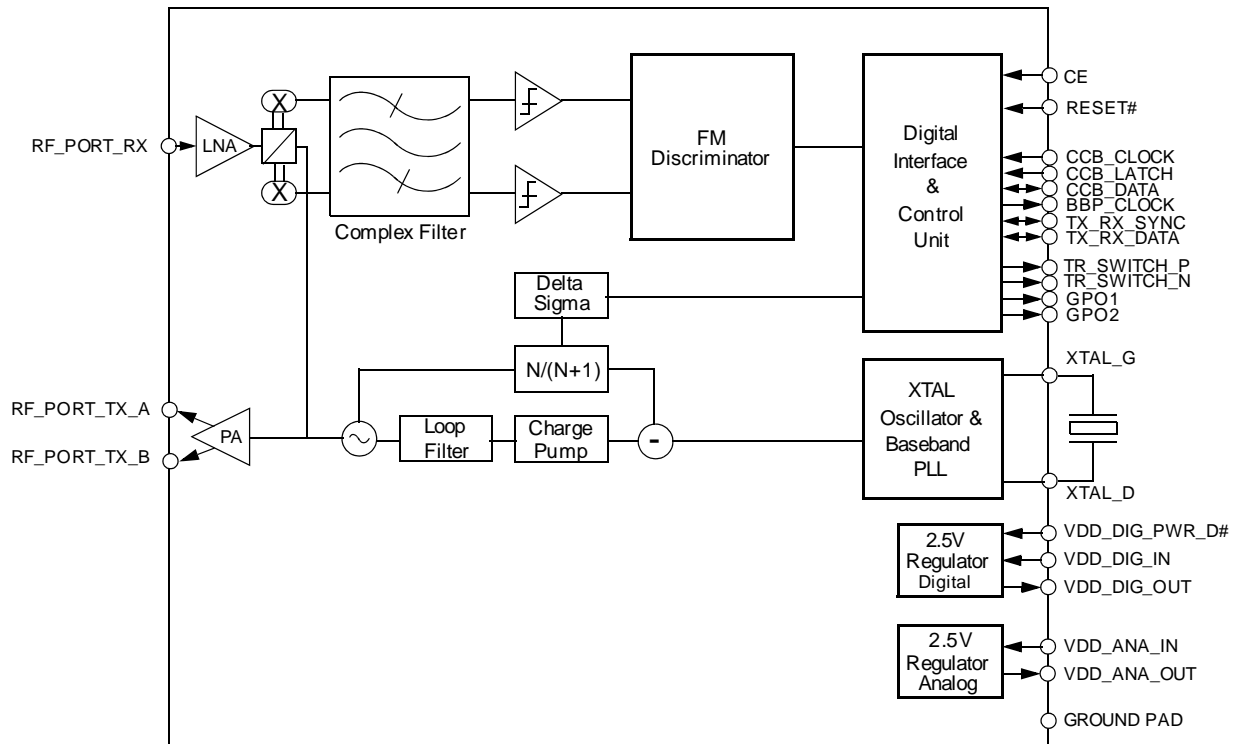
- **Bluetooth Version 1.1 Qualified**
- **Flexible Radio Frequency (RF) to Baseband (BB) Interface**
- **LOW POWER**
  - Low Current Consumption
  - Power Management Control Functions
- **HIGH PERFORMANCE**
  - < -82 dBm Sensitivity
  - Class 2/3 Operation
  - ± 1/12 Bit Sampling Resolution
  - Closed LoopM ΔΣ Modulation
- **HIGH INTEGRATION**
  - Low IF (Intermediate Frequency) Architecture with Digital Demodulation

- **Integrated Radio Frequency Voltage Controlled Oscillator (RFVCO)**
- **Dual on-chip Voltage Regulators:**
  - Input Voltages 2.85V–3.6V
  - Output Nominally 2.5VM
- **48-pin WQFN (Thin Quad Flatpack No lead) Package**
- **No Pb Leadframe – LMX5251SQ NOPB**

### APPLICATIONS

- **Bluetooth Compatible Interface Devices**
- **Cellular and Cordless Phones, PDAs**
- **Desktop and Laptop PCs, Printers, Scanners**
- **Other Wireless-Interfaced Appliances**

### BLOCK DIAGRAM



Please be aware that an important notice concerning availability, standard warranty, and use in critical applications of Texas Instruments semiconductor products and disclaimers thereto appears at the end of this data sheet.

Bluetooth is a trademark of Bluetooth Sig, Inc.

PRODUCTION DATA information is current as of publication date. Products conform to specifications per the terms of the Texas Instruments standard warranty. Production processing does not necessarily include testing of all parameters.

Copyright © 2004–2013, Texas Instruments Incorporated

# LMX5251

SNOSCW3A – FEBRUARY 2004 – REVISED APRIL 2013

[www.ti.com](http://www.ti.com)



These devices have limited built-in ESD protection. The leads should be shorted together or the device placed in conductive foam during storage or handling to prevent electrostatic damage to the MOS gates.

## DESCRIPTION

The LMX5251 is a high performance, monolithic, radio transceiver optimized for Bluetooth™™ communications systems. When used in conjunction with a Bluetooth baseband controller, a complete Bluetooth node with a Host Control Interface (HCI) can be implemented.

The LMX5251 radio architecture allows for minimal external components. The highly integrated design includes the Low Noise Amplifier (LNA), mixer, on-chip filters, 2.5 GHz delta-sigma phase-lock loop ( $\Delta\Sigma$  PLL), voltage controlled oscillator, modem functions, and dual power supply regulators. Digital modulation and demodulation techniques are utilized for a robust manufacturable design. Power management includes control over individual chip functions and internal voltage regulation for optimum performance.

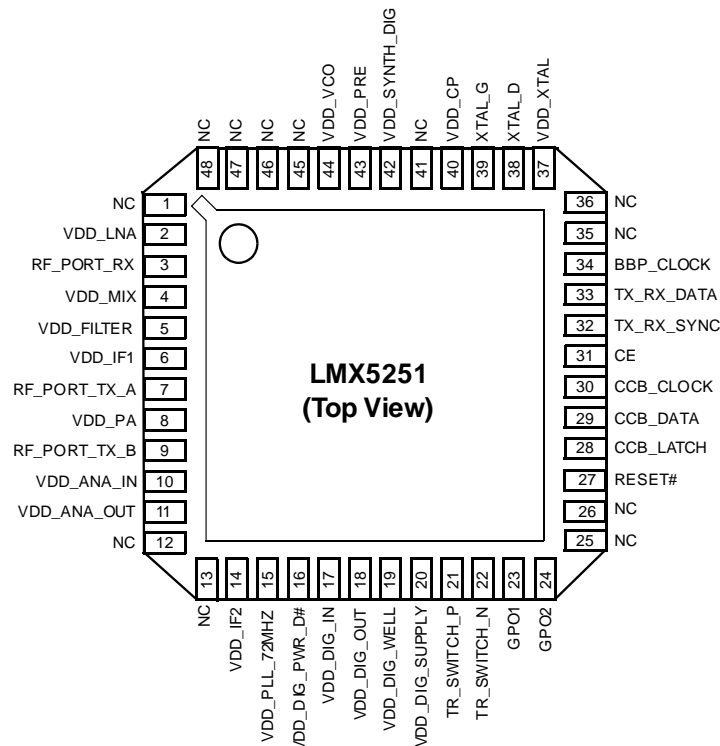
The LMX5251 modem circuitry provides the data communication link to the Bluetooth baseband controller. The interface is flexible and works with solutions that require a standalone Bluetooth radio. The LMX5251 can be placed in Sleep mode (reducing system current consumption) and is optimized for low power operation. It operates from a single 2.85V to 3.6V power supply.

The LMX5251 is manufactured using a CMOS process and is available in a 48-pin WQFN (Thin Quad Flatpack, No lead) package. Die processing is also available through Texas Instruments Die Products Group.

The LMX5251 is the most recent revision of the LMX5250 and is completely interoperable with the LMX5100 Bluetooth Baseband Controller.

## CONTENTS

FEATURES .....	1
APPLICATIONS.....	1
DESCRIPTION .....	2
ELECTRICAL SPECIFICATIONS .....	6
ABSOLUTE MAXIMUM RATINGS .....	6
RECOMMENDED OPERATING CONDITIONS .....	7
POWER SUPPLY ELECTRICAL SPECIFICATIONS .....	7
DC CHARACTERISTICS DIGITAL I/O .....	7
RECEIVER PERFORMANCE CHARACTERISTICS .....	8
TRANSMITTER PERFORMANCE CHARACTERISTICS.....	8
CRYSTAL/OSCILLATOR PERFORMANCE CHARACTERISTICS .....	9
AC CHARACTERISTICS SERIAL INTERFACE TIMING .....	10
PERFORMANCE PARAMETERS (TYPICAL).....	11
FUNCTIONAL DESCRIPTION .....	13
APPLICATION INFORMATION.....	20
Revision History.....	34

**CONNECTION DIAGRAM  
(TOP VIEW)**


NOTE: Ground pad layout under ground slug of LMX5251 is required. These are connected by vias through all layers to ground plane. No pins on device are ground pins so center slug must be grounded. See detail in [Figure 27](#) "Component Placement Layer 1 Ground Pad Detail".

**PIN FUNCTIONS**

PIN		I/O	DESCRIPTION
NAME	NO.		
NC	1, 12, 13, 25, 26, 35, 36, 41, 45–48	–	<b>No Connect.</b> Place pin but do not connect to VCC or Ground.
VDD_LNA	2	PWR	<b>Power Supply for Analog Circuitry.</b> Must be connected to the VDD_ANA_OUT pin (pin 11) or external supply. An RF bypass capacitor should be placed as close as possible to this pin and be connected to Ground.
RF_PORT_RX	3	I	<b>RF Input to Receiver.</b>
VDD_MIX	4	PWR	<b>Power Supply for Analog Circuitry.</b> Must be connected to the VDD_ANA_OUT pin (pin 11) or external supply. An RF bypass capacitor should be placed as close as possible to this pin and be connected to Ground.
VDD_FILTER	5	PWR	<b>Power Supply for Analog Circuitry.</b> Must be connected to the VDD_ANA_OUT pin (pin 11) or external supply. An RF bypass capacitor should be placed as close as possible to this pin and be connected to Ground.
VDD_IF1	6	PWR	<b>Power Supply for Analog Circuitry.</b> Must be connected to the VDD_ANA_OUT pin (pin 11) or external supply. An RF bypass capacitor should be placed as close as possible to this pin and be connected to Ground.
RF_PORT_TX_A	7	O	<b>Transmit Positive Differential Output.</b> Typically connected along with RF_PORT_TX_B to a balun and fed to the antenna.
VDD_PA	8	PWR	<b>Power Supply for Analog Circuitry.</b> Must be connected to the VDD_ANA_OUT pin (pin 11) or external supply. An RF bypass capacitor should be placed as close as possible to this pin and be connected to Ground.

**PIN FUNCTIONS (continued)**

PIN		I/O	DESCRIPTION
NAME	NO.		
RF_PORT_TX_B	9	O	<b>Transmit Inverted Differential Output.</b> Typically connected along with RF_PORT_TX_A to a balun and fed to the antenna.
VDD_ANA_IN	10	PWR	<b>2.85V to 3.6V Input for the Internal Power Supply Regulator for the RF Circuitry.</b> Powered down when CE (pin 31) is held low.
VDD_ANA_OUT	11	PWR	<b>Voltage Regulator Output/Power Supply for Analog Circuitry.</b> The bypass capacitor should be placed as close as possible to this pin and be connected to Ground.
VDD_IF2	14	PWR	<b>Power Supply for Analog Circuitry.</b> Must be connected to the VDD_ANA_OUT pin (pin 11) or external supply. An RF bypass capacitor should be placed as close as possible to this pin and be connected to Ground.
VDD_PLL_72MHZ	15	PWR	<b>Power Supply for Analog Circuitry.</b> Must be connected to the VDD_ANA_OUT pin (pin 11) or external supply. An RF bypass capacitor should be placed as close as possible to this pin and be connected to Ground.
VDD_DIG_PWR_D#	16	I	<b>Power Down for the Internal Power Supply Regulator for the Digital Circuitry.</b> Digital regulator is powered down when low. Default operation is on, internal pull-up.
VDD_DIG_IN	17	PWR	<b>2.85V to 3.6V Input for the Internal Power Supply Regulator for the Digital Circuitry.</b>
VDD_DIG_OUT	18	PWR	<b>Voltage Regulator Output/Power Supply for Digital Circuitry.</b> A bypass capacitor should be placed as close as possible to this pin and be connected to Ground.
VDD_DIG_WELL	19	PWR	<b>Power Supply for Digital Circuitry.</b> Must be connected to the VDD_DIG_OUT pin (pin 18) or external supply. A bypass capacitor should be placed as close as possible to this pin and be connected to Ground.
VDD_DIG_SUPPLY	20	PWR	<b>Power Supply for Digital Circuitry.</b> Must be connected to the VDD_DIG_OUT pin (pin 18) or external supply. A bypass capacitor should be placed as close as possible to this pin and be connected to Ground.
TR_SWITCH_P	21	O	<b>Output Control for RF T/R Switch.</b> The complement of TR_SWITCH_N. When the LMX5251 is transmitting, TR_SWITCH_P is high.
TR_SWITCH_N	22	O	<b>Output Control for RF T/R Switch.</b> The complement of TR_SWITCH_P. When the LMX5251 is receiving, TR_SWITCH_N is high.
GPO1	23	O	<b>General Purpose Output 1.</b> The multifunction output state is programmed by setting an internal register.
GPO2	24	O	<b>General Purpose Output 2.</b> The multifunction output state is programmed by setting an internal register.
RESET#	27	I	<b>Master Power on Inverted Reset Input.</b> Internal registers revert to default values while RESET# is low. The power control register default state enables only the crystal oscillator and BBP_CLOCK blocks.
CCB_LATCH	28	I	<b>Load Enable Signal of the Serial Interface.</b> During write operations (baseband controller writes into LMX5251 registers) the data received by the shift register of the LMX5251 is copied into the address register on the next rising edge of CCB_CLOCK after the CCB_LATCH signal has transitioned to high. During read operations (read from LMX5251 registers) the LMX5251 releases the CCB_DATA line on the next rising edge of CCB_CLOCK after the CCB_LATCH signal has transitioned to high. Reference serial port timing <a href="#">Figure 19</a> and <a href="#">Figure 20</a> .
CCB_DATA	29	I/O	<b>Multiplexed Serial Data Receive and Transmit Signal Path.</b> For a write operation, data is clocked into the LMX5251 shift register in the direction from the most significant bit (MSB) to the least significant bit (LSB). The data is shifted out of the baseband controller on the falling edge of CCB_CLOCK, and sampled by the LMX5251 (CCB_DATA) on the rising edge of CCB_CLOCK. For a read operation, data is clocked out of the LMX5251 shift register in the direction from MSB to LSB. The data is shifted out of the LMX5251 (CCB_DATA) on the rising edge of CCB_CLOCK, and sampled by the baseband controller on the falling edge of CCB_CLOCK. Reference serial port timing <a href="#">Figure 19</a> and <a href="#">Figure 20</a> .
CCB_CLOCK	30	I	<b>Serial Interface Shift Clock Signal.</b> The baseband controller always acts as the master of the serial interface and therefore always provides the shift clock. This clock can be asynchronous with the BBP_CLOCK and is assumed to be gated by the baseband controller. Reference serial port timing <a href="#">Figure 19</a> and <a href="#">Figure 20</a> .
CE	31	I	<b>Chip Enable Input.</b> All analog blocks and the analog regulator are off and there is no BBP_CLOCK signal. All digital blocks and the digital regulator are on.
TX_RX_SYNC	32	I/O	<b>Transmit and Receive Slot Timing Synchronization.</b>

**PIN FUNCTIONS (continued)**

PIN		I/O	DESCRIPTION
NAME	NO.		
TX_RX_DATA	33	I/O	<p><b>Multiplexed Transmit and Receive Bluetooth Data.</b> In receive mode (Bluetooth data direction from LMX5251 to baseband controller), this signal is provided by the LMX5251 demodulator (RX_DATA) to the baseband controller data receiver oversampled at a 12x multiple of the 1.0 Mbit/s rate.</p> <p>In transmit mode, (Bluetooth data direction from baseband controller to LMX5251) this signal is provided by the baseband controller packet generator to the LMX5251 modulator (TX_DATA) at a 1.0 Mb/s rate. A pulse on this bus provided by the baseband controller prior to the beginning of data transmission is used to synchronize the LMX5251 to the baseband controller to an internal 1.0 MHz transmit clock timing.</p>
BBP_CLOCK	34	O	<p><b>Buffered 12.000 MHz Clock.</b> This 12 MHz clock is provided by the LMX5251 and is used by the baseband controller as the fast system clock (main clock). The 12 MHz clock is also used in the LMX5251 demodulator and baseband controller data receiver as the sampling clock (12 times over-sampling) for the Bluetooth data. During Bluetooth low power modes, the XTAL oscillator and BBP_CLOCK output of the LMX5251 can be disabled. Upon RESET# being low, this pin is in TRI-STATE mode.</p>
VDD_XTAL	37	PWR	<p><b>Power Supply for Analog Circuitry.</b> Must be connected to the VDD_ANA_OUT pin (pin 11) or external supply. An RF bypass capacitor should be placed as close as possible to this pin and be connected to Ground.</p>
XTAL_D	38	I	<p><b>Crystal Drain Oscillator or Positive Clock Input.</b> Typically connected along with XTAL_G to an external surface mount AT cut crystal. Can also be configured as a frequency input when using an external crystal oscillator. When configured as a frequency input, it is typically connected to Ground with a 100 pF capacitor.</p>
XTAL_G	39	I	<p><b>Crystal Gate Oscillator or Negative Clock Input.</b> Typically connected along with XTAL_D to an external surface mount AT cut crystal. Can also be configured as a frequency input when using an external crystal oscillator. When configured as a frequency input, is typically connected to an external Temperature Compensated Crystal Oscillator (TCXO) through an Alternating Current (AC) coupling capacitor.</p>
VDD_CP	40	PWR	<p><b>Power Supply for Analog Circuitry.</b> Must be connected to the VDD_ANA_OUT pin (pin 11) or external supply. An RF bypass capacitor should be placed as close as possible to this pin and be connected to Ground.</p>
VDD_SYNTH_DIG	42	PWR	<p><b>Power Supply for Digital Circuitry.</b> Must be connected to the VDD_DIG_OUT pin (pin 18) or external supply. A bypass capacitor should be placed as close as possible to this pin and be connected to Ground.</p>
VDD_PRE	43	PWR	<p><b>Power Supply for Analog Circuitry.</b> Must be connected to the VDD_ANA_OUT pin (pin 11) or external supply. An RF bypass capacitor should be placed as close as possible to this pin and be connected to Ground.</p>
VDD_VCO	44	PWR	<p><b>Power Supply for Analog Circuitry.</b> Must be connected to the VDD_ANA_OUT pin (pin 11) or external supply. An RF bypass capacitor should be placed as close as possible to this pin and be connected to Ground.</p>

# LMX5251

SNOSCW3A – FEBRUARY 2004 – REVISED APRIL 2013

[www.ti.com](http://www.ti.com)

## ELECTRICAL SPECIFICATIONS

### GENERAL SPECIFICATIONS

The ABSOLUTE MAXIMUM RATINGS table indicate limits beyond which damage to the device may occur. The RECOMMENDED OPERATING CONDITIONS table indicate conditions for which the device is intended to be functional, but do not specify specific performance limits.

This device is a high performance RF integrated circuit and is ESD sensitive. Handling and assembly of this device should be performed at ESD free workstations.

The following conditions are true unless otherwise stated in the tables below:

- $T_A = -40^{\circ}\text{C}$  to  $+85^{\circ}\text{C}$
- $V_{DD\_ANA\_IN}$  and  $V_{DD\_DIG\_IN} = 3.3\text{V}$
- RF system performance specifications are specified on Texas Instruments Dallas Board rev 2.0a reference design platform.
- Reference Dallas Board rev 2.0a schematic for test point references.

### ABSOLUTE MAXIMUM RATINGS

		MIN	MAX	UNIT
$V_{DD\_ANA\_IN}$	Analog LDO voltage input	-0.2	3.6	V
$V_{DD\_DIG\_IN}$	Digital LDO voltage input	-0.2	3.6	V
$V_{DD\_XXXXX}$	All other power supply voltage inputs	-0.2	2.75	V
$V_I$	Voltage on any pin with GND = 0V	-0.2	$V_{DD} + 0.2$	V
PinRF	RF Input power		+15	dBm
$T_S$	Storage temperature range	-65	+150	$^{\circ}\text{C}$
$T_L$	Lead temperature (solder 4 sec)		+235	$^{\circ}\text{C}$
$T_{NOPBL}$	No Pb lead temperature (solder 4 sec)		+260	$^{\circ}\text{C}$
ESD-HBM	ESD – Human Body Model		2000 <sup>(1)</sup>	V
ESD-MM	ESD – Machine Model		200	V

(1) A 2000V ESD rating applies to all pins except  $V_{DD\_IF1}$  (pin 6) = 1500V.

## RECOMMENDED OPERATING CONDITIONS

		MIN	TYP <sup>(1)</sup>	MAX	UNIT
VDD_ANA_IN	Analog power supply voltage <sup>(2)</sup>	2.85	3.3	3.6	V
VDD_LNA					
VDD_FILTER					
VDD_IF1					
VDD_PA					
VDD_IF2					
VDD_PLL					
VDD_MIX					
VDD_XTAL					
VDD_CP					
VDD_PRE					
VDD_VCO					
VDD_DIG_IN	Digital power supply voltage <sup>(2)</sup>	2.85	3.3	3.6	V
VDD_DIG_WELL					
VDD_DIG_SUPPLY					
VDD_SYNTH_D					
T <sub>s</sub>	Operating temperature range	-40		85	°C

(1) Typical operating conditions are at 3.3V operating voltage and 25°C ambient temperature.

(2) Maximum voltage difference between input voltage for analog VDD and digital VDD is 500 mV.

## POWER SUPPLY REQUIREMENTS<sup>(1)</sup>

PARAMETER		MIN	TYP <sup>(2)</sup>	MAX	UNIT
I <sub>CC-RX</sub>	Receive power supply current (receive in Continuous mode)		62	78	mA
I <sub>CC-TX</sub>	Transmit power supply current (transmit in Continuous mode)		56	68	mA
I <sub>CC-PWDN</sub> <sup>(3)</sup>	Power-down current		24	200	µA

(1) Power supply requirements based on Class II output power.

(2) Typical operating conditions are at 2.85V operating voltage and 25°C ambient temperature.

(3) CE and V<sub>DD-DIG-PWR-D#</sub> low.

## POWER SUPPLY ELECTRICAL SPECIFICATIONS

PARAMETER		MIN	TYP <sup>(1)</sup>	MAX	UNIT
<b>ANALOG AND DIGITAL LDOS</b>					
VDD_ANA_IN VDD_DIG_IN	Analog and digital voltage input range <sup>(2)(3)</sup>	2.85	3.3	3.6	V
VDD_ANA_OUT VDD_DIG_OUT	Analog and digital voltage output range <sup>(4)</sup>	2.41	2.54	2.69	V

(1) Typical operating conditions are at 3.3V operating voltage and 25°C ambient temperature.

(2) Maximum voltage difference between input voltage for analog VDD and digital VDD is 500 mV.

(3) Maximum allowed input voltage supply ripple is 100mVp-p.

(4) Set in factory at 2.5V nominal output.

## DC CHARACTERISTICS DIGITAL I/O

PARAMETER	CONDITION	MIN	MAX	UNIT
V <sub>IH</sub> High-level input voltage	VDD_DIG_IO = 2.85V	0.8 <sub>I<sub>OVCC</sub></sub>		V
V <sub>IL</sub> Low-level input voltage		0.2 <sub>I<sub>OVCC</sub></sub>		V
I <sub>IH</sub> High-level input current	V <sub>IH</sub> = VDD_DIG_IO = 2.85V	-1	1	µA
I <sub>IL</sub> <sup>(1)</sup> Low-level input current	V <sub>IL</sub> = 0	-1	1	µA
V <sub>OL</sub> Low-level output voltage	I <sub>OL</sub> = 100 µA		0.2	V
V <sub>OH</sub> High-level output voltage	I <sub>OH</sub> = 100 µA	V <sub>DD</sub> - 0.2		V

(1) Limit for I<sub>IL</sub> for the pins Reset, CE and VDD\_DIG\_PWR\_D# is ±3µA.

## RF PERFORMANCE CHARACTERISTICS

In the performance characteristics tables the following applies:

1. All tests performed based on Bluetooth Test Specification rev 0.91.
2. All tests at antenna port unless otherwise specified.
3. VDD = 3.3V unless otherwise specified.
4. T<sub>A</sub> = -40°C to +85°C
5. RF system performance specifications are specified on Texas Instruments Dallas Board rev 2.0a reference design platform.
6. Reference Dallas Board rev 2.0a schematic for test point references.

## RECEIVER PERFORMANCE CHARACTERISTICS

PARAMETER		CONDITION	MIN	TYP <sup>(1)</sup>	MAX	UNIT
RX <sub>sense</sub> <sup>(2)</sup>	Receive sensitivity	BER < 0.001	2.402 GHz	-79	-72	dBm
			2.441 GHz	-79	-72	dBm
			2.480 GHz	-79	-72	dBm
PinRF	Maximum input level		-20	0		dBm
C/I <sub>CCI</sub>	Carrier to interferer ratio in the presence of co-channel interferer	P <sub>inRF</sub> = -60 dBm, BER < 0.001		9	11	dB
C/I <sub>ACI</sub>	Carrier to interferer ratio in the presence of adjacent channel interferer	ΔF <sub>ACI</sub> = ± 1 MHz, P <sub>inRF</sub> = -60 dBm, BER < 0.001		-3	0	dB
		ΔF <sub>ACI</sub> = + 2 MHz, P <sub>inRF</sub> = -60 dBm, BER < 0.001		-42	-30	dB
		ΔF <sub>ACI</sub> = + 3 MHz, P <sub>inRF</sub> = -67 dBm, BER < 0.001		-46	-40	dB
C/I <sub>IMAGE</sub>	Carrier to interferer ratio in the presence of image interferer	ΔF = -2 MHz, P <sub>inRF</sub> = -67 dBm, BER < 0.001		-20	-9	dB
C/I <sub>IMAGE</sub> 1MHz	Carrier to interferer ratio in the presence of image-1MHz interferer	Δf = -3 MHz, P <sub>inRF</sub> = -67 dBm, BER < 0.001		-32	-20	dB
IMP <sup>(3)</sup>	Intermodulation performance	F <sub>1</sub> = + 3 MHz, F <sub>2</sub> = + 6 MHz, P <sub>inRF</sub> = -64 dBm		-39	-31	dBm
Z <sub>RFIN</sub> <sup>(4)</sup>	Input impedance of RF port (RF_inout)	Single input impedance, F <sub>in</sub> = 2.5 GHz		50		Ω
Return Loss <sup>(5)</sup>	Return Loss				-8	dB
OOB	Out Of Band Blocking Performance	P <sub>inRF</sub> = -10 dBm, 30 MHz < F <sub>CWI</sub> < 2 GHz, BER < 0.001		-10		dBm
		P <sub>inRF</sub> = -27 dBm, 2000 MHz < F <sub>CWI</sub> < 2399 MHz, BER < 0.001		-27		dBm
		P <sub>inRF</sub> = -27 dBm, 2498 MHz < F <sub>CWI</sub> < 3000 MHz, BER < 0.001		-27		dBm
		P <sub>inRF</sub> = -10 dBm, 3000 MHz < F <sub>CWI</sub> < 12.75 GHz, BER < 0.001		-10		dBm

(1) Typical operating conditions are at 3.3V operating voltage and 25°C ambient temperature.

(2) The receiver sensitivity is measure at the device interface.

(3) The f<sub>0</sub> = -64 dBm Bluetooth modulated signal, f<sub>1</sub> = -39dbm sine wave, f<sub>2</sub> = -39 dBm Bluetooth modulated signal, f<sub>0</sub> = 2f<sub>1</sub> - f<sub>2</sub>, and |f<sub>2</sub> - f<sub>1</sub>| = n × 1MHz, where n is 3, 4, or 5. For the typical case, n = 3.

(4) Reference Smith chart [Figure 4](#).

(5) Reference chart [Figure 5](#).

## TRANSMITTER PERFORMANCE CHARACTERISTICS

PARAMETER		CONDITION	MIN	TYP <sup>(1)</sup>	MAX	UNIT
P <sub>OUTRF</sub> <sup>(2)</sup>	Transmit output power	2.402 GHz	-1	3	7	dBm
		2.441 GHz	-1	3	7	dBm
		2.480 GHz	-1	3	7	dBm
Power Density	Power density		-4	1	2	dBm

(1) Typical operating conditions are at 3.3V operating voltage and 25°C ambient temperature.

(2) The output power is measure at the device interface.



**TRANSMITTER PERFORMANCE CHARACTERISTICS (continued)**

PARAMETER		CONDITION	MIN	TYP <sup>(1)</sup>	MAX	UNIT
MOD $\Delta F_{1AVG}$	Modulation characteristics	Data = 00001111	140	165	175	kHz
MOD $\Delta F_{2MAX}$ <sup>(3)</sup>		Data = 10101010	115	125		kHz
$\Delta F_{2AVG}/\Delta F_{1AVG}$ <sup>(4)</sup>	Modulation characteristics		0.8			
ACP <sup>(5)</sup>	Adjacent channel power (In-band spurious)	+ 500 kHz			-20	dBc
		M N  = 2	-50	-48	-20	dBm
		M N  > 3	-53	-51	-40	dBm
$P_{OUT2 \times f_0}$ <sup>(6)</sup>	PA 2 <sup>nd</sup> Harmonic Suppression	Maximum gain setting: $f_0 = 2402$ MHz, $P_{out} = 4804$ MHz		-77		dB
$P_{OUT3 \times f_0}$ <sup>(3)</sup>	PA 3 <sup>rd</sup> Harmonic Suppression	Maximum gain setting: $f_0 = 2402$ MHz, $P_{out} = 7206$ MHz		-98		dB
$Z_{RFOUT}$ <sup>(7)</sup>	RF Output Impedance/Input Impedance of RF Port (RF_inout)	$P_{out}$ at 2.5 GHz		50		$\Omega$
Return Loss <sup>(8)</sup>	Return Loss				-14	dB

(3)  $\Delta F_{2max} > 115$  kHz for at least 99.9% of all  $\Delta f_{2max}$ .

(4) Modulation index set between 0.28 and 0.35.

(5) Not tested in production.

(6) Out-of-Band spurs only exist at 2<sup>nd</sup> and 3<sup>rd</sup> harmonics of the CW frequency for each channel. Performance of the radio is significantly better than BT 1.1 specification.

(7) Reference Smith chart [Figure 4](#).

(8) Reference chart [Figure 6](#).

**SYNTHESIZER PERFORMANCE CHARACTERISTICS<sup>(1)</sup>**

PARAMETER		CONDITION	MIN	TYP	MAX	UNIT
$f_{VCO}$	VCO Frequency range		2402		2480	MHz
$t_{LOCK}$	Lock time	$f_0 \pm 20$ kHz		120		$\mu$ s
$\Delta f_{offset}$	Initial carrier frequency tolerance	During preamble	-75	0	75	kHz
$\Delta f_{drift}$	Initial carrier frequency drift	DH1 data packet	-25	0	25	kHz
		DH3 data packet	-40	0	40	kHz
		DH5 data packet	-40	0	40	kHz
		Drift Rate	-20	0	20	kHz/50 $\mu$ s
$t_{D-TX}$	Transmitter delay time	From Tx data to antenna		4		$\mu$ s

(1) Frequency accuracy dependent on crystal or oscillator chosen. Crystal/oscillator must have cumulative accuracy specifications of not more than  $\pm 20$  ppm to meet the Bluetooth specification.

**CRYSTAL/OSCILLATOR PERFORMANCE CHARACTERISTICS**

PARAMETER		TEST CONDITIONS	MIN	TYP	MAX	UNIT
$f_{OSC}$	Crystal oscillator frequency		10	12	26	MHz
$f_{ACC}$ <sup>(1)</sup>	Frequency accuracy	Cumulative over operating temperature range	-20		20	ppm
$t_{OSC-ON}$	Oscillator turn-on time	VCC applied, $f_{OSC} = 12$ MHz, $C_{ext} = 0.1$ $\mu$ F, Settled to within $f_{ACC}$		4		ms
$V_{OSC}$	Oscillator input voltage	External XO input	0.6		2	Vpp
ESR	Equivalent series resistance			50	100	$\Omega$
$D_{CYCLE}$	Duty cycle		49%		51%	
$P_{NOISE}$	Phase noise	100Hz			-105	dBc/Hz
		1000Hz			-125	dBc/Hz
$B_{BCLK}$	Baseband clock output frequency			12		MHz

(1) Frequency accuracy dependent on crystal or oscillator chosen. Crystal/oscillator must have cumulative accuracy specifications of  $\pm 15$  ppm to provide margin for frequency drift with aging and temperature.

# LMX5251

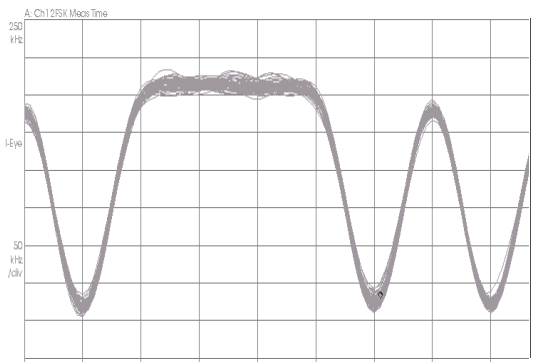
SNOSCW3A – FEBRUARY 2004 – REVISED APRIL 2013

[www.ti.com](http://www.ti.com)

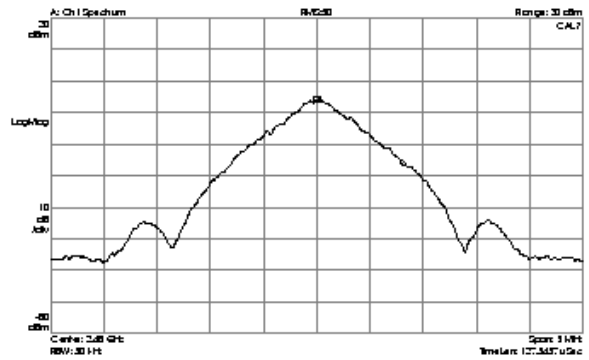
## AC CHARACTERISTICS SERIAL INTERFACE TIMING

PARAMETER		CONDITION	MIN	TYP	MAX	UNIT
$t_{CS}$	Data to clock setup time	See <a href="#">Serial Port Timing Diagrams</a>	10			ns
$t_{CH}$	Data to clock hold time		5			ns
$t_{CWH}$	Clock pulse width high		20			ns
$t_{CWL}$	Clock pulse width low		20			ns
$t_{ES}$	Clock to enable setup time		10			ns
$t_{CES}$	Enable to clock setup time		20			ns
$t_{EWH}$	Enable pulse width high		20			ns
$t_{EWL}$	Enable pulse width low		200			ns
$t_{MS}$	Master to slave transfer time			70		ns
$t_{MTRI}$	Master to TRI-STATE setup time			-5	10	ns
$t_{SCTL}$	Slave control setup time			0	10	ns
$t_{SM}$	Slave to master return time				60	ns
$t_{STRI}$	Slave to TRI-STATE setup time			0	10	ns
$t_{MCTL}$	Master control setup time			-5	10	ns

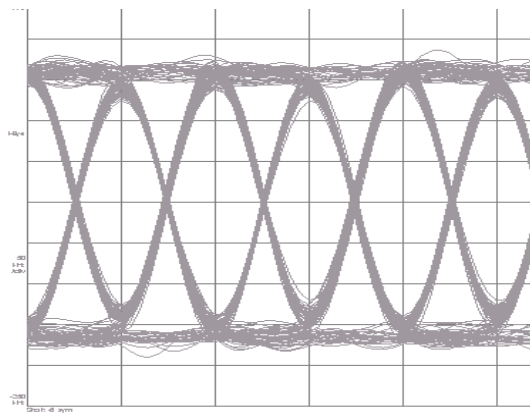
**PERFORMANCE PARAMETERS (TYPICAL)**



**Figure 1. Modulation**



**Figure 2. Transmit Spectrum**



**Figure 3. Corresponding Eye Diagram**

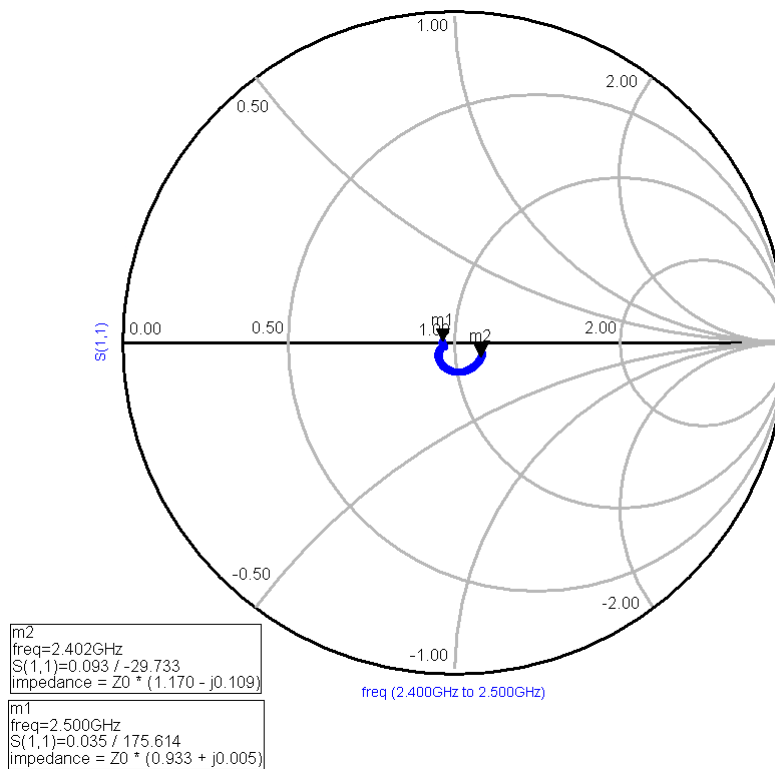


Figure 4. TX and RX Pin 50Ω Impedance Characteristics

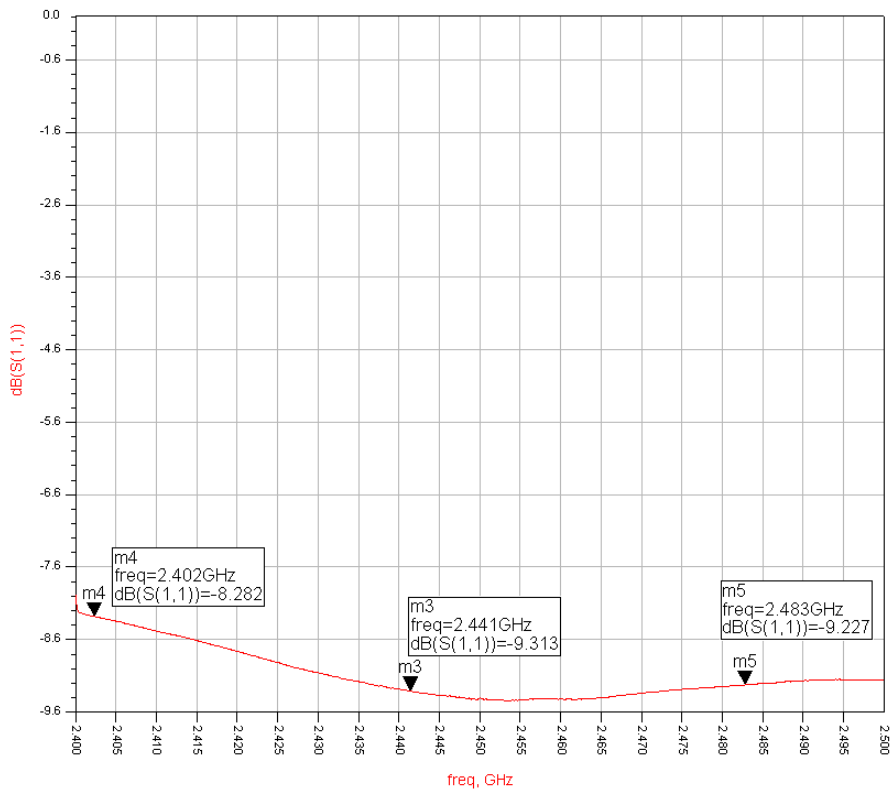
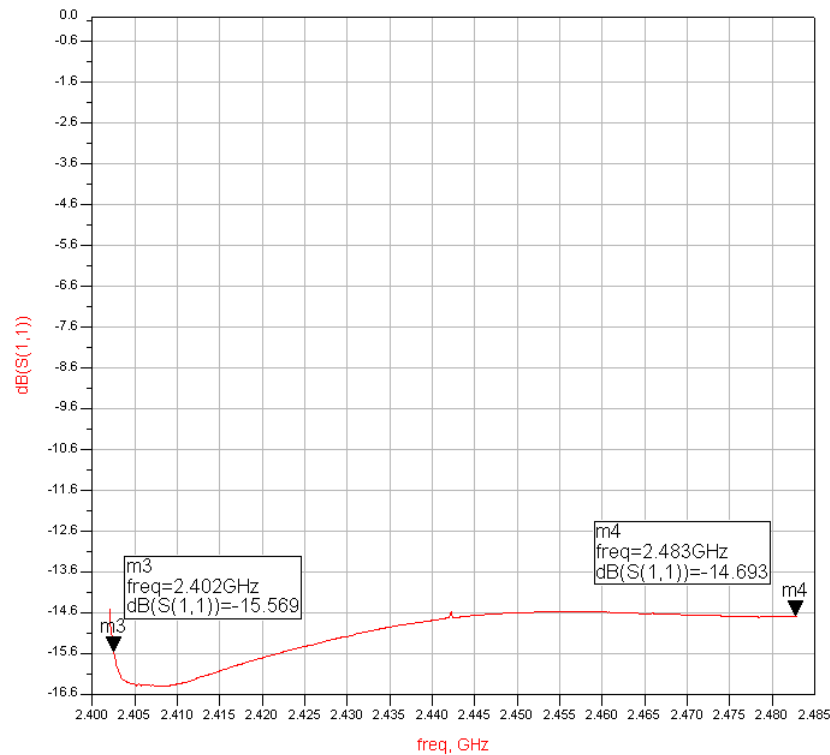


Figure 5. Receiver Return Loss



**Figure 6. Transmitter Return Loss**

## FUNCTIONAL DESCRIPTION

The LMX5251 is a high performance, monolithic, radio transceiver optimized for Bluetooth communications systems. When used in conjunction with a Bluetooth baseband controller (e.g., LMX5100), a complete Bluetooth node with a Host Control Interface (HCI) can be implemented.

The LMX5251 radio architecture allows for minimal external components. The highly integrated design includes the low noise amplifier (LNA), mixer, on-chip filters, 2.5 GHz  $\Delta\Sigma$  PLL, voltage controlled oscillator (VCO), power amplifier (PA) driver, and modem functions. Digital modulation and demodulation techniques are utilized for a robust manufacturable design. Power management includes control over individual chip functions and internal voltage regulation for optimum performance.

The LMX5251 is optimized for low power operation, while maintaining sensitivity performance. The main external components required consist of a crystal (or other clock source) and assorted de-coupling capacitors to form a complete Class 2 Bluetooth radio transceiver. Optional components, based on the requirements of a particular application may include a band select filter, T/R switch, and a differential to single ended balun (discrete or microstrip). The T/R switch and balun are required only if one antenna is used instead of two antennas.

### Radio Receiver

The signal path of the RX architecture contains an internal LNA and quadrature RF downconverting mixer at 2.5 GHz. A low intermediate frequency (IF) receiver provides high performance at low cost and low current consumption. The IF demodulator is implemented digitally in combination with a limiting amplifier.

### Low Noise Amplifier

The on-board low noise amplifier (LNA) is a single-ended structure designed with a 50 $\Omega$  input impedance for simple capacitive matching. The LNA is closely integrated with the mixer providing low noise and good immunity from blocking signals.

## LMX5251

SNOSCW3A – FEBRUARY 2004 – REVISED APRIL 2013

[www.ti.com](http://www.ti.com)

### RX Mixer

The receive mixer is an image reject ring diode type mixer. An internal low noise gain block is incorporated prior to the mixer to achieve extremely low noise performance. A differential IF output improves noise immunity while maintaining a high intercept point.

### Channel Select Filter

The IF circuitry is followed by an integrated complex active bandpass filter that provides the required channel selectivity and image rejection. The I and Q outputs of the filter are then converted to the digital domain using a limiter, discriminator, and A/D converter.

### Limiter

The limiter circuit consists of I and Q limiting amplifiers that provide the remaining gain in the receiver such that an acceptable signal level exists at the frequency modulation (FM) discriminator. Limiting amplification of the downconverted wanted signal minimizes the input range requirements of the A/D converter.

### FM Discriminator

The limited signal is translated to digital format using an analog frequency shift keying (FSK) demodulator and A/D converter. The A/D extracts the RX signal at a sample rate of 72.0 MHz.

### Receive Signal Strength Indicator

The receive signal strength indicator (RSSI) signal is derived from the input level to the limiter and covers a range low detector level = -59dBm and high detector level = -38dBm. The information is typically fed back to the baseband controller via the serial interface.

### Radio Transmitter

The signal path of the TX architecture contains an internal modulator for 1 Mb/s GFSK (Gaussian Frequency Shift Keying) modulation of the 2.5 GHz VCO. Closed loop  $\Delta\Sigma$  modulation is chosen, since it is the most low power solution. The integrated pre-amplifier provides output levels sufficient for Class 2 Bluetooth operation.

### Modulator

The encrypted, whitened, transmit data stream is supplied by the baseband controller to the LMX5251 via the TX\_RX\_DATA pin (pin 33). An internal digital Gaussian filter provides the FSK modulation waveform. A modulation input to the completely integrated 2.5 GHz  $\Delta\Sigma$  PLL provides a consistent modulation deviation. This eliminates the risks of open loop modulation such as frequency drift and frequency offset.

### Transmit Frequency Output

The transmit RF output is differential, and typically connected to the antenna through a passive balun.

### Frequency Synthesizers

The 2.4 to 2.5 GHz RF range is provided by an on-chip voltage controlled oscillator (VCO). A programmable 2.5 GHz  $\Delta\Sigma$  PLL selects the channel frequency. An internal crystal oscillator can be configured with a 10 to 26 MHz crystal, or for TCXO frequency input. Internal dividers provide internal clocks and clock outputs to the baseband controller.

### Voltage Controlled Oscillator

The transmit VCO is configured differentially, with an internal tank circuit, and tuning varactor. The input modulated signal is supplied from the internal  $\Delta\Sigma$  PLL.

## Crystal Circuit

Due to the need for clock accuracy, the LMX5251 has a dedicated crystal oscillator. The LMX5251 uses the crystal to supply a 12 MHz clock source to the baseband controller. The 12 MHz is buffered, providing a receive data clock to the baseband controller. It is also possible to configure the crystal oscillator for input only when another high quality crystal oscillator is available in the system. The LMX5251 can accommodate crystals from 10 to 26 MHz in increments of 10 kHz.

## External Crystal Oscillators

The LMX5251 each contain a crystal driver circuit. This circuit operates with an external crystal and capacitors to form an oscillator. (See [Figure 7](#) and [Figure 23](#)). The LMX5251 also can operate with an external TCXO (Temperature Compensated Crystal Oscillator).

## Crystal

The crystal appears inductive near its resonant frequency. It forms a resonant circuit with its load capacitors. The resonant frequency may be trimmed with the crystal load capacitance.

### 1. Load Capacitance

For resonance at the correct frequency, the crystal should be loaded with its specified load capacitance, which is the value of capacitance used in conjunction with the crystal unit. Load capacitance is a parameter specified by the crystal, typically expressed in pF. The crystal circuit shown in [Figure 8](#) is composed of:

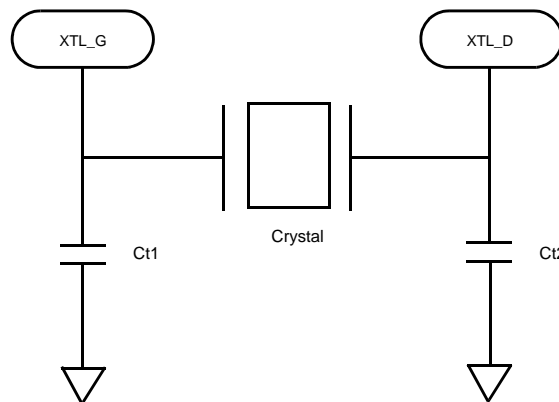
- C1 (motional capacitance)
- R1 (motional resistance)
- L1 (motional inductance)
- C0 (static or shunt capacitance)

The LMX5251 provide some of the load with internal capacitors  $C_{int}$ . The remainder must come from the external capacitors labeled Ct1 and Ct2 as shown in [Figure 7](#). Ct1 and Ct2 should have the same the value for best noise performance. Crystal load capacitance ( $C_L$ ) is calculated as the following:

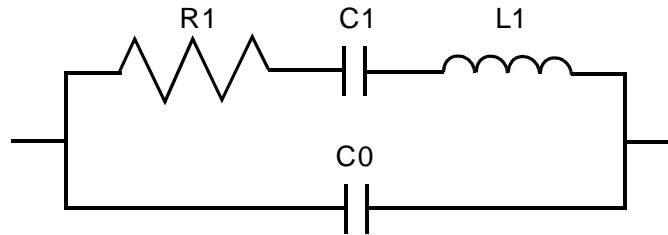
$$C_L = C_{int} + Ct1 // Ct2$$

The  $C_L$  above does not include the crystal internal selfcapacitance C0 as shown in [Figure 8](#), so the total capacitance is:

$$C_{total} = C_L + C0$$



**Figure 7. LMX5251 Crystal Recommended Circuit**


**Figure 8. Crystal Equivalent Circuit**

## 2. Crystal Pullability

Pullability is another important parameter for a crystal, which is the change in frequency of a crystal with units of ppm/pF, either from the natural resonant frequency to a load resonant frequency, or from one load resonant frequency to another. The frequency can be pulled in a parallel resonant circuit by changing the value of load capacitance. A decrease in load capacitance causes an increase in frequency, and an increase in load capacitance causes a decrease in frequency.

## 3. Frequency Tuning

Frequency Tuning is achieved by adjusting the crystal load capacitance with external capacitors. It is a Bluetooth requirement that the frequency is always within  $\pm 20$  ppm. Crystal/oscillator must have cumulative accuracy specifications of  $\pm 15$  ppm to provide margin for frequency drift with ageing and temperature.

## 4. Vite Crystal

The VXE4-1055 is a 12 MHz SMT crystal from Vite. Texas Instruments is using this crystal with the LMX5251. [Table 1](#) shows the specification of VXE4-1055.

Since the internal capacitance of the crystal circuit is 4-5 pF and the load capacitance is 9 pF, 10 pF is a good starting point for both Ct1 and Ct2. The 2480 MHz RF frequency offset is then tested. [Figure 9](#) shows the RF frequency offset test results.

[Figure 9](#) shows the results are 100 kHz off the center frequency, which is  $-4$  ppm. The pullability of the crystal is 24 ppm/pF, so the load capacitance must be decreased by about 0.2 pF. By changing Ct1 or Ct2 to 9 pF, the total load capacitance is increased by 0.26 pF. [Figure 10](#) shows the frequency offset test results. The frequency offset is now zero with Ct1 = 9 pF, Ct2 = 10 pF.

## 5. Kineski KSS CX-4025S

The LMX5251 has also been tested with the Kineski KSS CX-4025S. See [Table 2](#).

**Table 1. VXE4-1055-12M000**

SPECIFICATION	VALUE
Package	6.0x3.5x1.1 mm 4 pads
Frequency	12.000 MHz
Mode	Fundamental
Stability	$\pm 18$ ppm at $-20$ to $+70^\circ\text{C}$ (inclusive of all conditions)
Load Capacitance	9 pF
ESR	40 $\Omega$ max, 20 $\Omega$ typ
Shunt Capacitance	7 pF max
Drive Level	10 to 100 $\mu\text{W}$
Pullability	24 ppm/pF min
Storage Temperature	$-40$ to $+85^\circ\text{C}$



Table 2. KSS CX-4025S

SPECIFICATION	VALUE
Package	4.0x2.5x0.75 mm 4 pads
Frequency	12.000 MHz
Mode	Fundamental
Stability	±20 ppm at -30 to +80°C (inclusive of all conditions)
Load Capacitance	12pF
ESR	80 Ω max, 20 Ω typ
Shunt Capacitance	3 pF max
Drive Level	100 μW max
Storage Temperature	-40 to +85°C

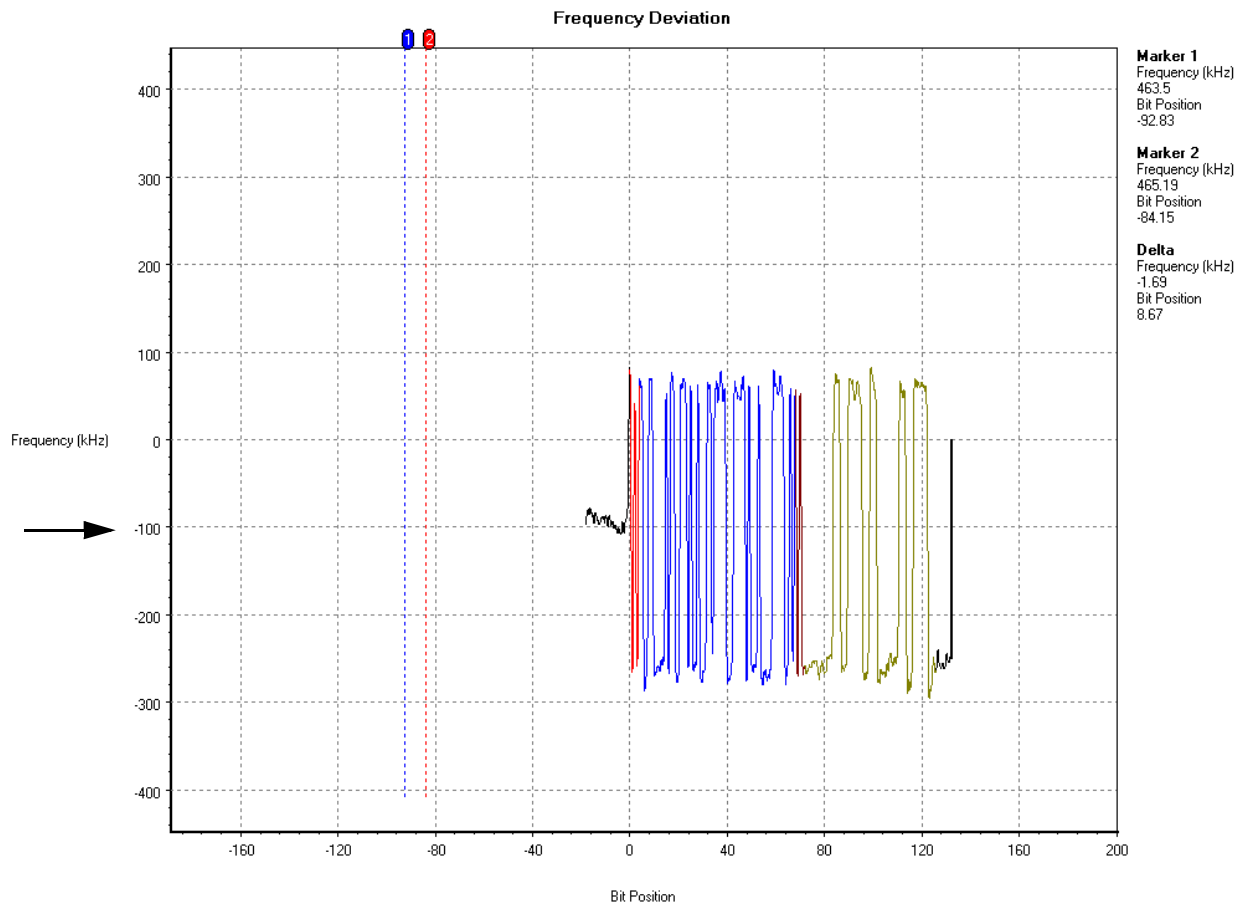
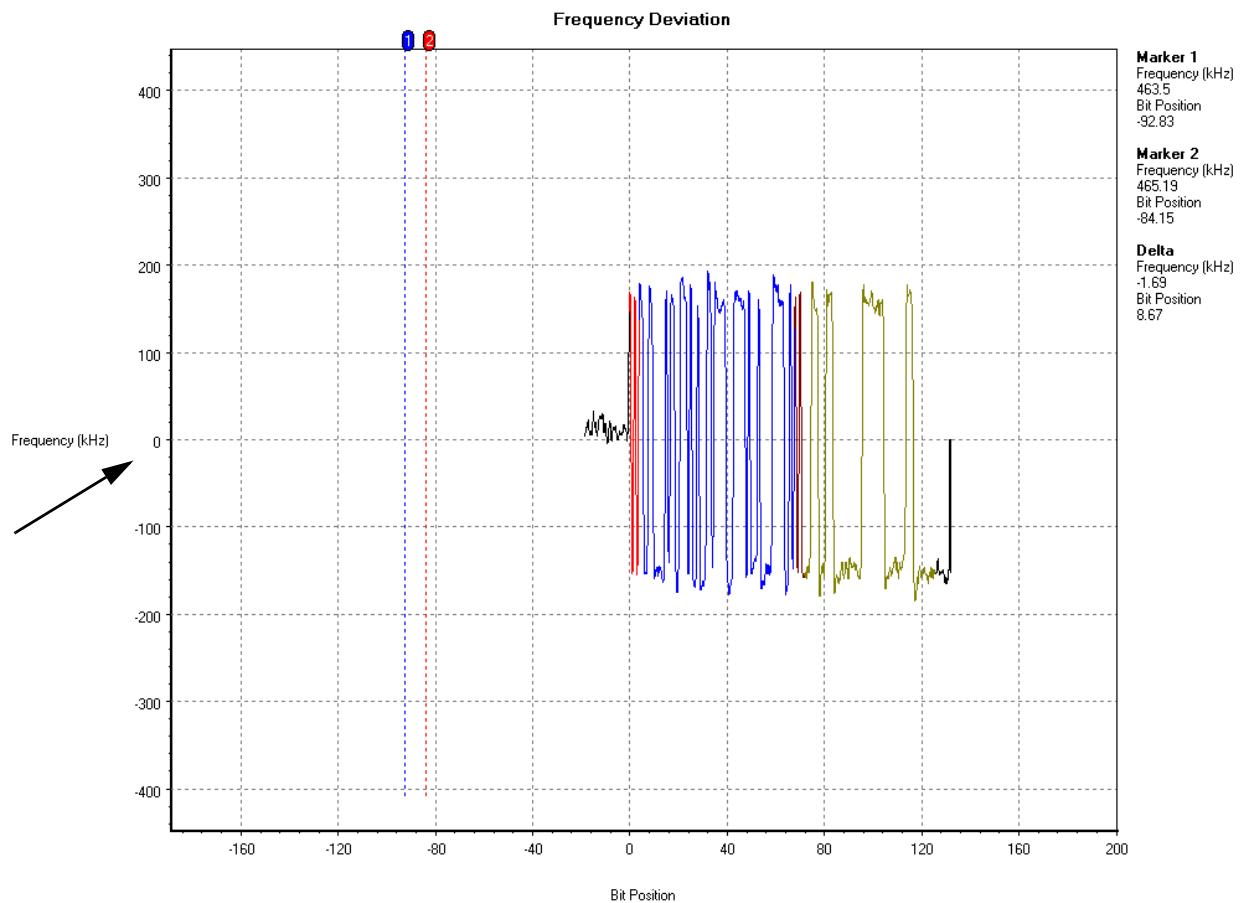


Figure 9. Frequency Offset with 10 pF Capacitors



**Figure 10. Frequency Offset with 9 pF//10 pF Capacitors**

**TCXO (Temperature Compensated Crystal Oscillator)**

The LMX5251 also can operate with an external TCXO (Temperature Compensated Crystal Oscillator). The TCXO signal is directly connected to the XTL\_G, shown in [Figure 24](#).

1. Input Impedance

The LMX5251 XTL\_G pin has an input impedance of 2pF capacitance in parallel with >400kΩ resistance.

2. NKG3184A TCXO

The LMX5251 has also been tested with the NKG3184A TCXO. See [Table 3](#).

**Table 3. TCXO NKG3184A**

SPECIFICATION	VALUE
Package	5.0x3.2x1.4 mm 4 pads
Frequency	12.000 MHz
Stability	±18 ppm at -30 to +85°C (inclusive of all conditions)
Output Load	10kΩ // 13pF
Current Consumption	2.0mA
Output Level	0.3Vp-p to 2.0Vp-p
Storage Temperature	-40 to +85°C
DC Cut Capacitor	Included in VC-TCXO

## Multiple Crystal Support

The LMX5251 Bluetooth Radio IC can operate using a large range of crystal frequencies. The on-chip  $\Delta\Sigma$  PLL can accommodate crystal frequencies or clock sources from 10 to 26 MHz. In addition, the LMX5251 can generate a 12 MHz Baseband Controller Clock (BBP\_CLOCK) using its on-board  $\Delta\Sigma$  PLL. For baseband controllers requiring a frequency clock other than 12 MHz, the BBP\_CLOCK can be switched to generate a digital signal at the crystal frequency.

## Theory of Operation

For 10 to 20 MHz crystals, the LMX5251 doubles the crystal frequency for use on the chip. It generates an internal 12 MHz clock with 24-bit accuracy for its internal processing using one PLL. In addition, it must generate an RF signal for transmit and receive using another PLL with 24-bit accuracy. For 20 to 26 MHz crystals, the LMX5251 does not double the crystal frequency, but still generates the 12 MHz internal clock and RF signal with 24-bit accuracy. The baseband controller must supply the LMX5251 with two correct 24-bit codes so the LMX5251 will generate the 12 MHz internal clock as well as the RF signal correctly:

- $\text{Clock\_Code\_12MHz\_PLL} = 72 \times (10^6) \times (2^{16}) / \text{crystal}$
- $\text{Clock\_Code\_RF\_PLL} = (2^{16}) \times \text{crystal} / (10^6)$

## Serial Interface

The serial interface for the LMX5251 is a 3-wire data clock latch in slave configuration. The interface can also support bidirectional data transfer mode. An option to provide fast write-only programmability is also included. The serial interface is used to program all of the various control registers and state machines in the LMX5251. The read back mode is enabled through a control bit provided by the baseband controller.

## Power Control

The power control information for the LMX5251 is stored in dedicated power control registers, which configure the state for the various circuit blocks as long as VDD\_ANA\_IN is applied. In addition, a hardware control pin, CE, is available for enabling the entire chip for RX, TX, and Standby modes. While RESET# is low, the LMX5251 registers are reset to the default values. In normal mode, the LMX5251 powers up according to the state of the mode and power control register bits. The default condition powers down all circuit blocks except for the crystal oscillator, crystal oscillator voltage regulator, and baseband controller interface. The RX or TX mode configuration is then programmed via the serial interface.

## Voltage Regulation

Voltage is regulated using two 100 mA linear voltage regulators producing the following voltages:

- Input Range: 2.85V to 3.6V
- Output: 2.5V

The LMX5251 crystal oscillator is forced on by the use of the TX\_RX\_DATA pin. When RESET# is brought high, the TX\_RX\_DATA pin is also held high by the baseband controller. This allows for a baseband controller bootup sequence. The default state of the crystal oscillator will start up and provide an output to the BBP\_CLOCK pin once the level has surpassed a minimum threshold. Once the baseband controller is stable, the TX\_RX\_DATA pin reverts to normal operation.

## Internal Pull-Ups/Downs

LMX5251 has four pads that have either pull-ups or pull downs. Reference [Table 4](#) for details.

**Table 4. Internal Pull-Ups/Downs**

NAME	DIRECTION	DESCRIPTION
CE	Pull-up	Upon power-up, the LMX5251 generates a 12 MHz baseband clock in default configuration.
RESET#	Pull-up	Upon power-up, RESET# is low, and the LMX5251 registers are reset to the default values. When RESET# transitions low to high, the LMX5251 starts normal operation.
VDD_DIG_PWR_DWN#	Pull-up	Upon power-up, held high to enable digital LDO regulator.
BBP_CLOCK	Pull-down	Upon power-up, a 12 MHz clock is provided by the LMX5251 to the baseband controller. In low power modes, the BBP_CLOCK output of the LMX5251 can be disabled.

## APPLICATION INFORMATION

### Typical Application Block Diagrams

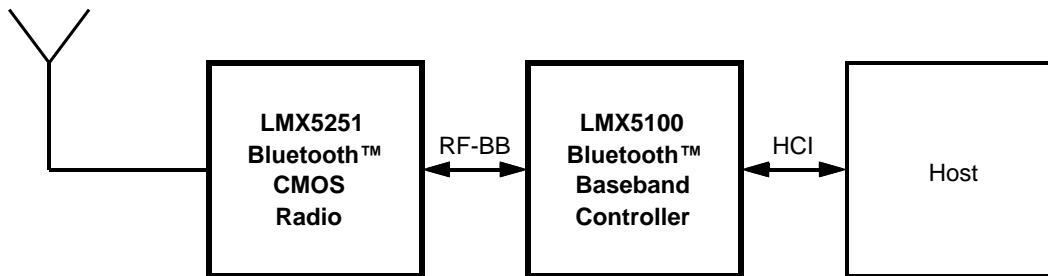


Figure 11. System Application Diagram

### LMX5100/LMX5251 Interface

This section describes the interface signals between the LMX5251 and the LMX5100. The LMX5251 interfaces to the LMX5100 via an 8-pin interface, called the RF interface. Figure 12 shows how the LMX5100 interfaces to the LMX5251 Bluetooth CMOS Radio chip.

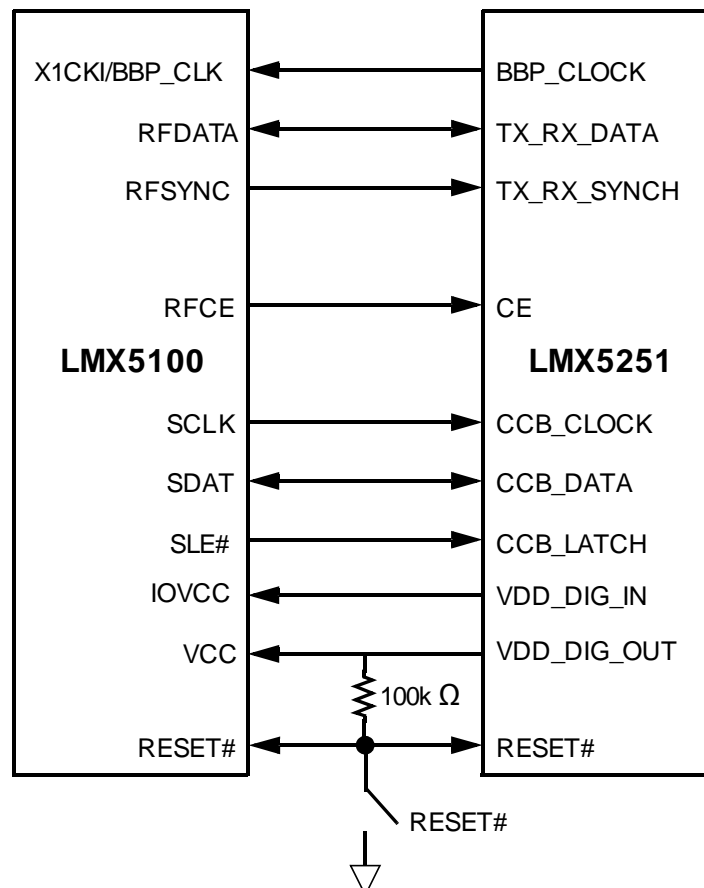


Figure 12. LMX5100/LMX5251 Interface

## RF Interface

The LMX5251 and the LMX5100 communicate with each other via an 8-pin digital interface. The RF interface signals can be grouped as:

- Modem Signals (BBP\_CLOCK, TX\_RX\_DATA, and TX\_RX\_SYNC)
- Chip Enable Control Signal (CE)
- Serial Interface Signals (CCB\_CLOCK, CCB\_DATA and CCB\_LATCH)

**BBP\_CLOCK (Pin 34):** The BBP\_CLOCK pin is the output pin for the 12 MHz clock signal to the LMX5100. This 12 MHz clock is provided by the LMX5251 and is used by the LMX5100 as the fast system clock (main clock) as well as the sampling clock (12 times over sampling) for the Bluetooth data, transferred via the TX\_RX\_DATA pin. During Bluetooth power-down phases, the clock output of the LMX5251 can be disabled by driving the CE pin of the RF interface with a logic low level. However, the RF interface is only allowed to control the clock while the power management module of the LMX5100 has granted “Hardware Clock Control” to the Bluetooth LLC.

**TX\_RX\_DATA (Pin 33):** The TX\_RX\_DATA pin is the multiplexed Bluetooth data receive and transmit pin. The data is provided at a bit rate of 1 Mbit/s and 12 times over sampled corresponding to the 12 MHz BBP\_CLOCK. The TX\_RX\_DATA pin is a dedicated RF interface pin. This pin is driven to a logic high level after reset.

**TX\_RX\_SYNC (Pin 32):** In receive mode (data direction from LMX5251 to LMX5100), this pin acts as the frequency correction/DC compensation circuit control output to the LMX5251. The TX\_RX\_SYNC pin is driven low throughout the correlation phase, and brought high when synchronization to the received access code is achieved.

In transmit mode (data direction from LMX5100 to LMX5251) this pin is used to enable the RF output of the LMX5251. When the TX\_RX\_SYNC pin is driven high, the RF transmitter circuit of the LMX5251 is enabled, corresponding to the settings of the power control register in the LMX5251.

**CE (Pin 31):** The CE pin is the chip enable input from the LMX5100 to LMX5251. When the CE pin is driven high, the LMX5251 is powered-up according to the settings of its power control registers. When the CE pin is low, the LMX5251 is powered-down. However, the serial interface is still operational and the LMX5100 can still access the LMX5251 internal control registers.

**CCB\_CLOCK (Pin 30):** The CCB\_CLOCK pin is the serial interface shift clock output. The LMX5100 always acts as the master of the serial interface and therefore always provides the shift clock to the LMX5251.

**CCB\_DATA (Pin 29):** The CCB\_DATA pin is the multiplexed serial data receive and transmit path from/to the LMX5100.

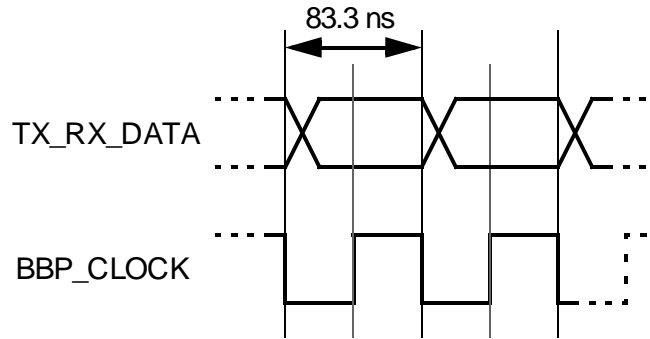
**CCB\_LATCH (Pin 28):** The CCB\_LATCH pin is the serial load enable input of the serial interface of the LMX5251.

During write operations (write to LMX5251 registers), the data received by the shift register of the LMX5251 is latched into the address register on the next rising edge of CCB\_CLOCK after the CCB\_LATCH signal is driven high.

During read operations (read from LMX5251 registers), the LMX5251 releases the CCB\_DATA line on the next rising edge of CCB\_CLOCK after the CCB\_LATCH signal is driven high.

## Receive and Transmit Data Timing

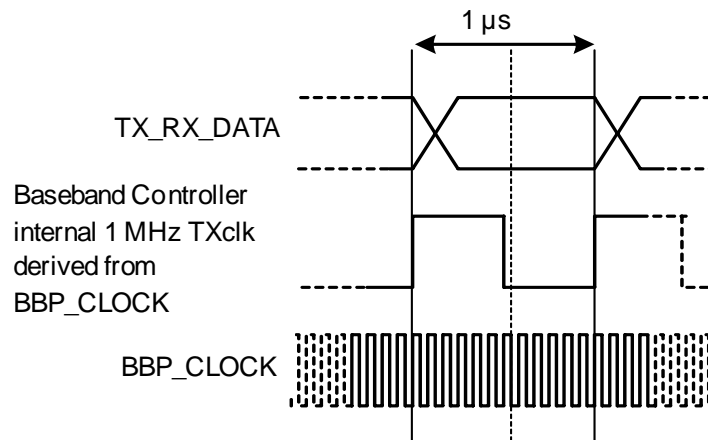
All timing for receive and transmit data exchange is derived from the 12 MHz BBP\_CLOCK (pin 34) output of the LMX5251. The LMX5251 always uses the negative edge, and the baseband controller always uses the positive edge of the BBP\_CLOCK signal. For receive mode, the LMX5251 controls the TX\_RX\_DATA bus, and asserts the data from the incoming Bluetooth RF packet onto the TX\_RX\_DATA pin (pin 33) at the falling edge of the BBP\_CLOCK. The baseband controller samples the TX\_RX\_DATA at the rising edge of BBP\_CLOCK to allow for bus transition time and clock skew. The timing diagram for TX\_RX\_DATA is shown in [Figure 13](#) and [Figure 14](#).



LMX5251 asserts TX\_RX\_DATA;  
Baseband Controller samples TX\_RX\_DATA.

**Figure 13. Bluetooth Receive Data Timing**

During transmit mode, the baseband controller controls the TX\_RX\_DATA line, and asserts the data from the outgoing Bluetooth RF packet onto TX\_RX\_DATA at the rising edge of the BBP\_CLOCK. The LMX5251 samples the RX\_DATA at the falling edge of BBP\_CLOCK after a six BBP\_CLOCK period delay, corresponding to a half symbol time delay to allow for sampling at the middle of the data bit.



Baseband Controller asserts TX\_RX\_DATA;  
LMX5251 samples TX\_RX\_DATA

**Figure 14. Bluetooth Transmit Data Timing**

### Receive Mode Slot Timing

Prior to initiating the receive mode, the crystal oscillator must be turned on and settled such that the BBP\_CLOCK output is present. The baseband controller programs the LMX5251 receiver (RX) mode and frequency information via the serial interface, at which point the LMX5251 PLL begins acquiring the correct RX frequency channel. After ~100 μs, the receive chain powers up. RX data is then clocked to the baseband controller. The serial port is used to program the LMX5251 out of receive mode.

The LMX5251 has built in flexibility for adjusting the TX\_RX\_SYNC timing. The default is for the TX\_RX\_SYNC to go high at the middle of the third trailer bit, T2. The LMX5251 TX\_RX\_SYNC\_del[1:0] programming bits adjust for position of TX\_RX\_SYNC pulse with respect to center of the trailer bits ±0.5 μs (see [Figure 15](#)). When the TX\_RX\_SYNC pulse goes high at T0, T1, T2, or T3, TX\_RX\_SYNC\_del is set to 0, 1, 2, or 3 respectively. The TX\_RX\_SYNC\_del is set to the delay in usec of the TX\_RX\_SYNC rising edge relative to the leading edge of the first trailer bit, T0. An example of the TX\_RX\_SYNC timing for the case when the trailer is 1010 is shown in [Figure 15](#).



Figure 15. TX\_RX\_SYNC Timing

### Transmit Mode Slot Timing

Prior to initiating the transmit mode, the crystal oscillator must be turned on and settled such that the BBP\_CLOCK output is present. The baseband controller programs the LMX5251 transmit mode and frequency information via the serial interface, at which point the LMX5251 PLL begins acquiring the correct TX frequency channel. After ~120  $\mu$ s, the transmit chain powers up. A TX data synch pulse is provided by the baseband controller to the LMX5251 at least 1  $\mu$ s before data transmission begins. This allows the LMX5251 to derive a synchronous internal 1 MHz transmit clock. TX data is then clocked into the LMX5251 as shown in Figure 14. The serial port is used to program the LMX5251 out of transmit.

### RXMODE 2 Receive Command Sequence

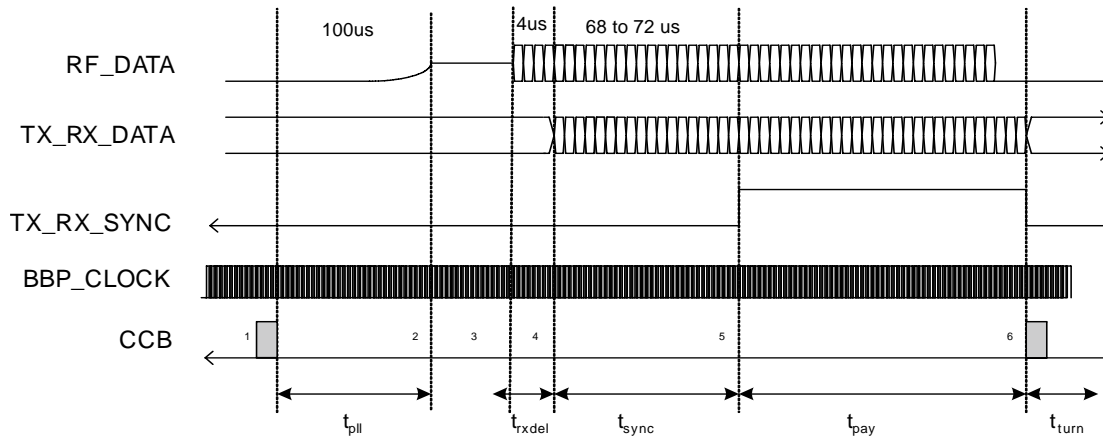
Reset only needs to happen once after power-up. For receive mode, the receive channel frequency is the channel frequency - 1 (example: to receive on channel 0 (2402 - 1 = 2401 MHz). RXMODE 2 register values are shown in Table 5.

Table 5. RXMODE 2 Register Values

CCB ADDRESS REGISTER	CCB DATA REGISTER	COMMENT
0x01	0x0181	Receive Channel (2401) and Start RX2 Sequence
0x01	0x0081	Return to Idle

### Steps to Receive

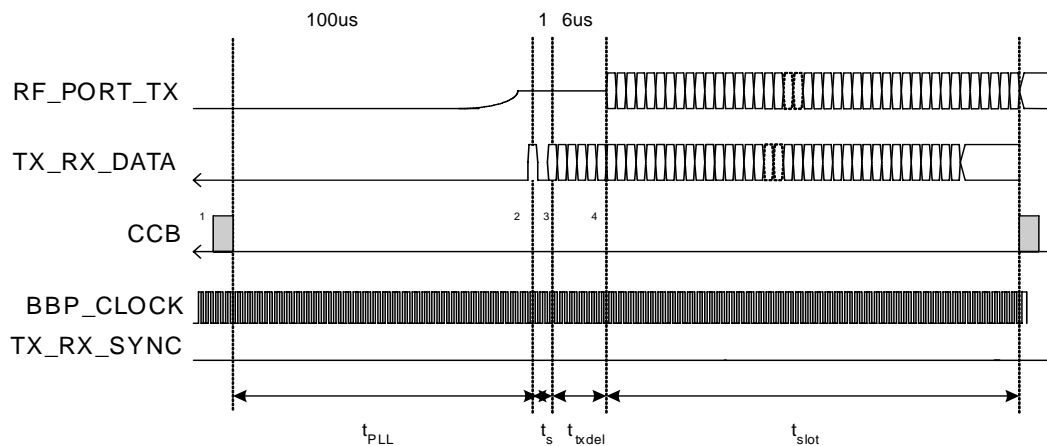
1. The LMX5100 programs the Control Registers (CCB registers) with the sequence in Table 5, using the three serial interface pins.
2. The LMX5251 scans the channel until the LMX5100 Idles the chip.
3. The propagation delay between the RF\_PORT\_RX and the TX\_RX\_DATA is 4  $\mu$ s.
4. First the Bluetooth RF Preamble bit exits the TX\_RX\_DATA pin.
5. When the access code is detected, the LMX5100 brings TX\_RX\_SYNC high during the trailer. No rigorous timing is required at this time.


**Figure 16. RXMODE 2 Receive Timing**
**TXMODE 2 Transmit Command Sequence**

In TXMODE 2, the baseband controller sends transmit data (and access code) at 1 Mbps to the LMX5251. The baseband controller sends a synchronization pulse 2  $\mu$ s before the actual data. This pulse is 1  $\mu$ s in duration. The transmit data is latched into the LMX5251 by an internally generated 1 MHz clock synchronous to the 12 MHz BBP\_CLOCK output. TXMODE 2 register values are shown in [Table 6](#).

**Table 6. TXMODE 2 Register Values**

CCB REGISTER ADDRESS	CCB DATA REGISTER	COMMENT
0x01	0x0101	Transmit Channel (2401) and Start TX2 Sequence
0x01	0x0001	Return to Idle


**Figure 17. TXMODE 2 Transmit Timing**



## SYSTEM POWER-UP SEQUENCE

In order to correctly power-up the Bluetooth system (LMX5251 and LMX5100) the following sequence must be performed:

1. Apply VDD to the LMX5251.
2. Apply IOVCC and VCC to the LMX5100.
3. The RESET# pin of the LMX5251 should be driven high minimum of 2ms after the LMX5251 and LMX5100 volt- age rails are high. The LMX5251 and LMX5100 are properly reset.
4. After internal Power-On Reset (POR) of the LMX5100 the TX\_RX\_DATA pin of the LMX5100 is driven high. The CE, TX\_RX\_SYNC, and CCB\_DATA pins of the LMX5251 are in TRISTATE mode. However, there are pull-up/pull-down resistors built into the CCB\_CLOCK, CCB\_DATA, CCB\_LATCH, and TX\_RX\_SYNC pins of the LMX5251 to specify the correct initial voltage levels for a proper power-up sequence.
5. The TX\_RX\_DATA pin driven to logic high level causes the LMX5251 to enable its oscillator. After an oscillator start-up delay, the LMX5251 drives a stable 12 MHz clock (BBP\_CLOCK) to the LMX5100.
6. The Bluetooth LLC can now directly control the RF interface pins and set the pins to the logic high levels required during the power-up phase. The CE pin, driven high, forces the LMX5251 to switch from “power-up” to “normal” mode and to disable its internal pull-up/pull-down resistors on the RF interface.
7. In the “normal” mode, the oscillator of the LMX5251 is controlled via the CE pin. Driving the CE pin high enables the oscillator, and the LMX5251 drives the BBP\_CLOCK.

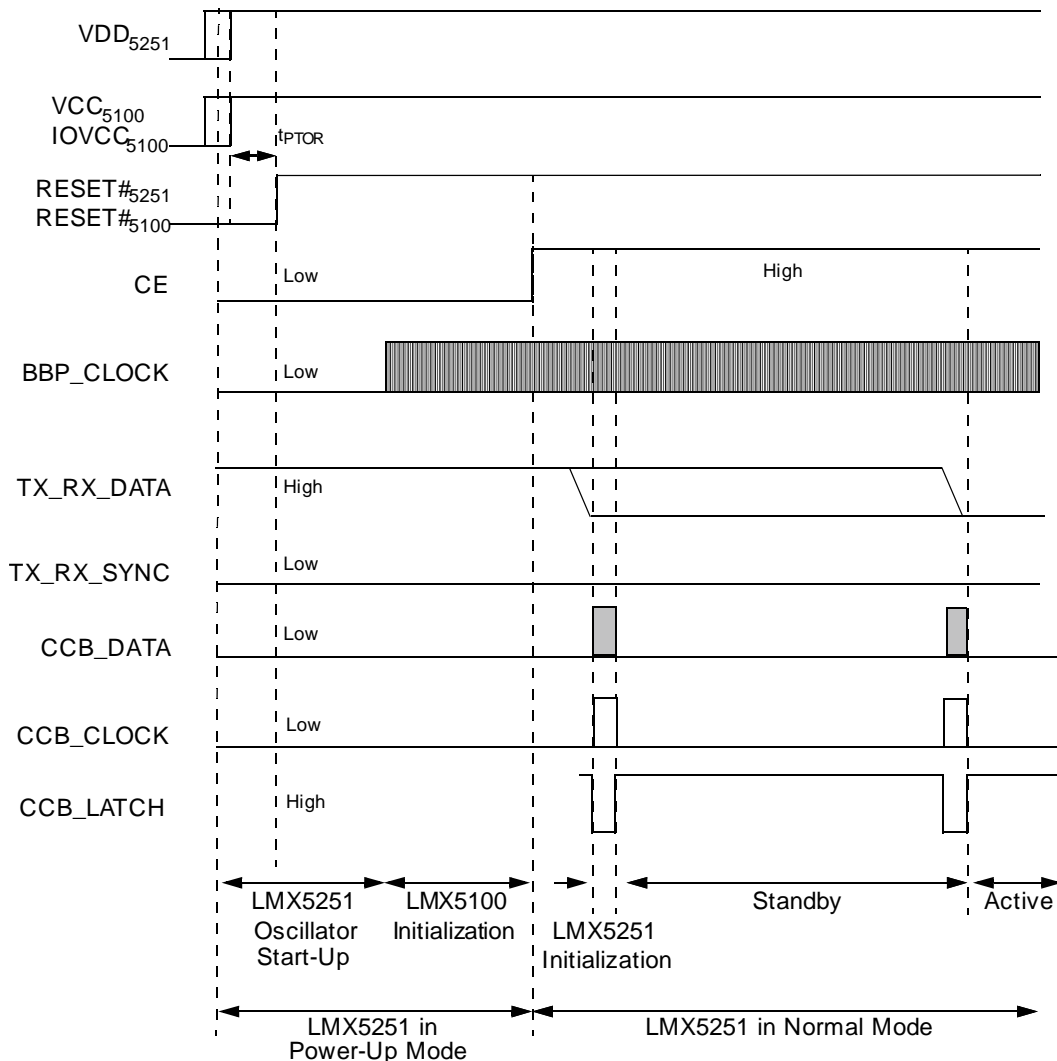


Figure 18. LMX5251/LMX5100 System Power-Up Sequence Timing

## LMX5251/LMX5100 System Power-up Sequence Timing

**Table 7. LMX5251/LMX5100 System Power-up Sequence Timing**

PARAMETER	CONDITION	MIN	TYP	MAX	UNIT
t <sub>PTOR</sub>	Power to Reset	VDD <sub>5251</sub> /VCC <sub>5100</sub> /IO <sub>VCC</sub> at operating voltage level to valid reset	2		ms

### PROGRAMMING DESCRIPTION

The LMX5251 register set can be accessed through the serial interface. The LMX5251 serial interface operates in slave mode to a serial port master contained in a Bluetooth baseband controller such as the baseband controller. A 25-bit shift register is used as a temporary register to indirectly program the on-chip registers. The shift register consists of a Data field, Address field, R/W bit, and Header. The three MSBs of the data loaded into the shift register is the Header 101 (data is programmed MSB first). The Header is immediately followed by the R/W control bit. When R/W = 0, data is clocked into the LMX5251 shift register in the direction from MSB to LSB, when the CCB\_CLOCK signal goes high. Shift register bits 20 to 16 are used to decode the internal register address. After the rising edge of the Load Enable (CCB\_LATCH) signal, the next rising edge of CCB\_CLOCK loads data stored in the shift register into the addressed on-chip register. The serial interface memory map is comprised of four pages for configuring the smart radio functionality. Each page consists of 32 addressable data registers, 16 bits in length. The serial interface format is shown in [Table 8](#).

#### Write Operation

Serial port write operation timing is shown in [Figure 19](#). When R/W = 0, data is clocked from the baseband controller into the LMX5251 16-bit shift register in the direction from MSB to LSB. The data is shifted out of the baseband controller on the falling edge of CCB\_CLOCK, and sampled by the LMX5251 (CCB\_DATA) on the rising edge of CCB\_CLOCK. When Load Enable (CCB\_LATCH) transitions high, data is transferred from the 16-bit shift register into a control register on the rising edge of the next CCB\_CLOCK. The data is directed to the appropriate control register depending on the state of the address bits (Address[4:0]), and the active page (Register 0x00, data [11:8]). A multiplexing circuit in the LMX5251 decodes these address bits and writes the data field to the corresponding internal register. In a write operation, the data from the slave (LMX5251) shift register is transferred to the data register on the first clock rising edge after CCB\_LATCH goes high.

#### Read Operation

Serial port read operation timing is shown in [Figure 20](#) on page 26. When R/W = 1, no data field is sent to the LMX5251 from the baseband controller, and the LMX5251 transmits the current value of the addressed register to the baseband controller. Upon receiving the read command (R/W = 1), the LMX5251 takes control of the serial interface data bus. Data is clocked out of the LMX5251 shift register in the direction from MSB to LSB when the CCB\_CLOCK signal goes high, and is read into the baseband controller on the falling edge of CCB\_CLOCK. When Load Enable (CCB\_LATCH) transitions high, the LMX5251 returns control to the baseband controller. The CCB\_DATA field assignment for the registers is shown in [Table 8](#). Sixteen bits are always clocked out on a read operation regardless of the register size, with the undefined bits as “don’t care”.

#### Read Operation Timing

Data is clocked out of the LMX5251 shift register when the CCB\_CLOCK signal goes high, and read into the baseband controller on the falling edge of CCB\_CLOCK. At 12 MHz a 1/2 clock cycle is 41.7 ns. The steps needed for a read operation are:

1. Baseband controller asserts CCB\_CLOCK rising edge.
2. LMX5251 receives CCB\_CLOCK rising edge, changes CCB\_DATA.
3. LMX5251 asserts new data on CCB\_DATA.
4. Baseband controller receives CCB\_DATA.
5. Baseband controller asserts CCB\_CLOCK falling edge.

Step 4 must occur before step 5. Any additional pad delays also must be taken into account.

### Master Slave Data Bus Transfer

Serial port master to slave transfer timing is shown in Figure 21. Upon receiving the read command (R/W = 1), the LMX5251 takes control of the serial interface data bus after the address bits of the register to be read back are received. The baseband controller stops driving CCB\_DATA on the falling edge of CCB\_CLOCK immediately after the rising edge used by the LMX5251 to clock in the LSB of the address. The LMX5251 then starts driving the data bus at the next rising edge of CCB\_CLOCK. The LMX5251 holds the last data value until returning the bus to master control.

### Slave to Master Data Bus Return

Serial port master to slave return timing is shown in Figure 22. In a read operation the master requests that the slave stops transmitting data by driving Load Enable (CCB\_LATCH) high. When CCB\_LATCH transitions high, the LMX5251 releases CCB\_DATA at the next rising edge of CCB\_CLOCK. The baseband controller takes control of CCB\_DATA at the successive falling edge of CCB\_CLOCK.

Table 8. Serial Interface Read/Write Register Format

MSB																			LSB					
24	23	22	21	20	19	18	17	16	15	14	13	12	11	10	9	8	7	6	5	4	3	2	1	0
Header[2:0]			R/W	Address[4:0]				Data[15:0]																

### Serial Port Timing Diagrams

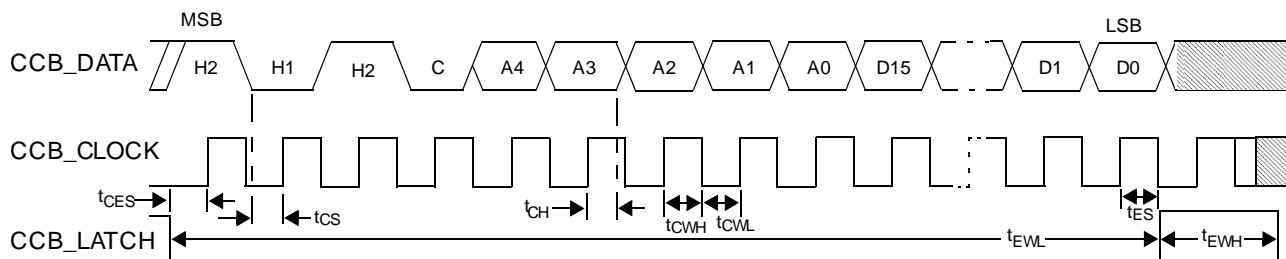


Figure 19. Serial Port Write Timing Diagram

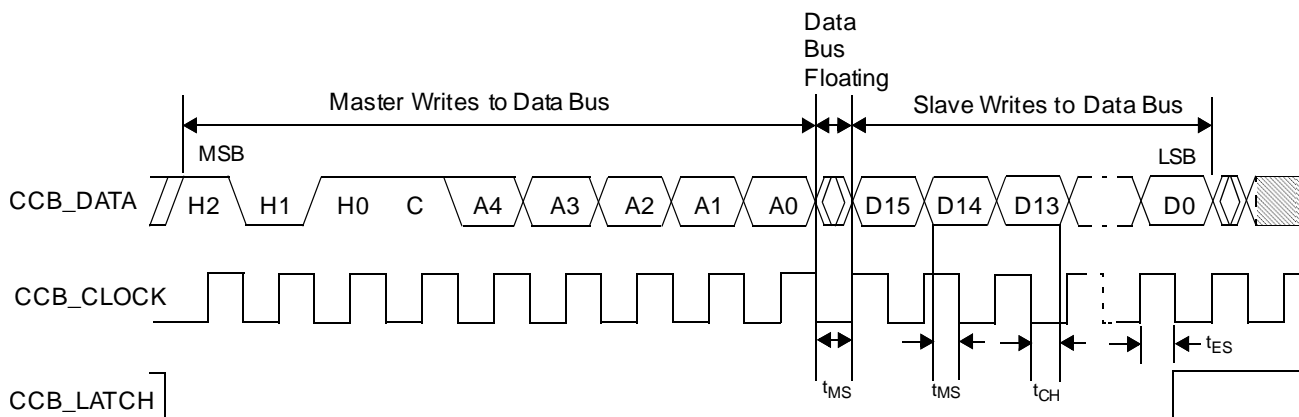
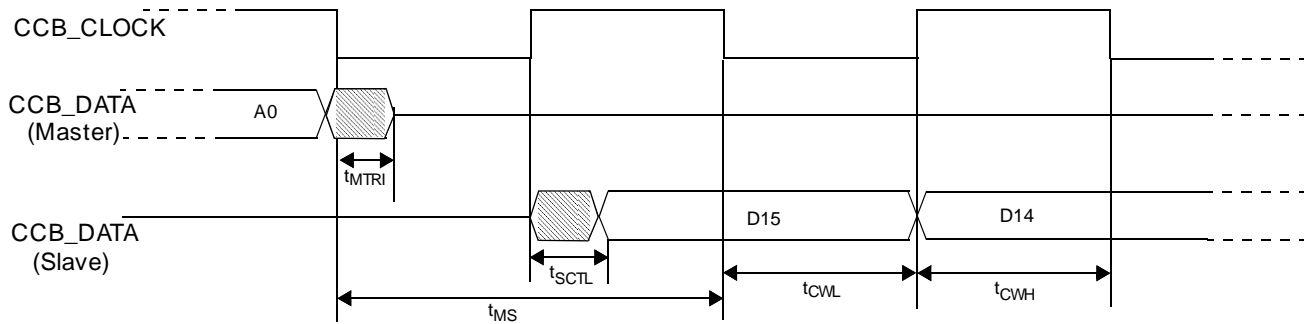
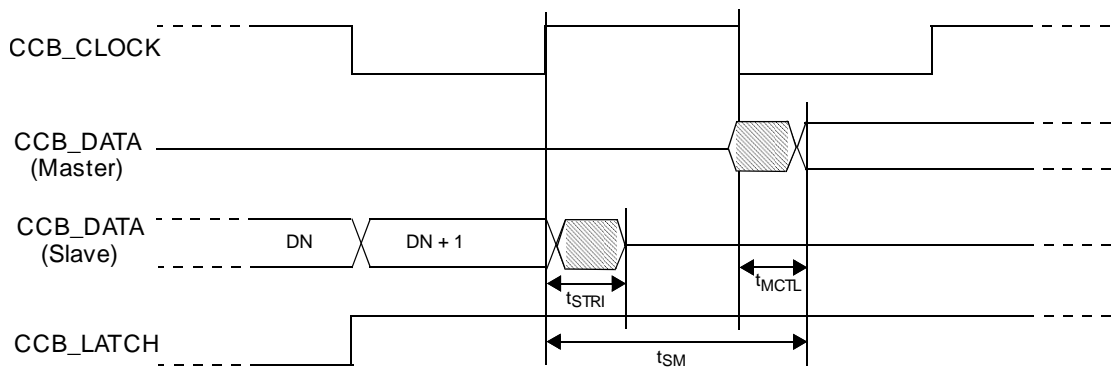
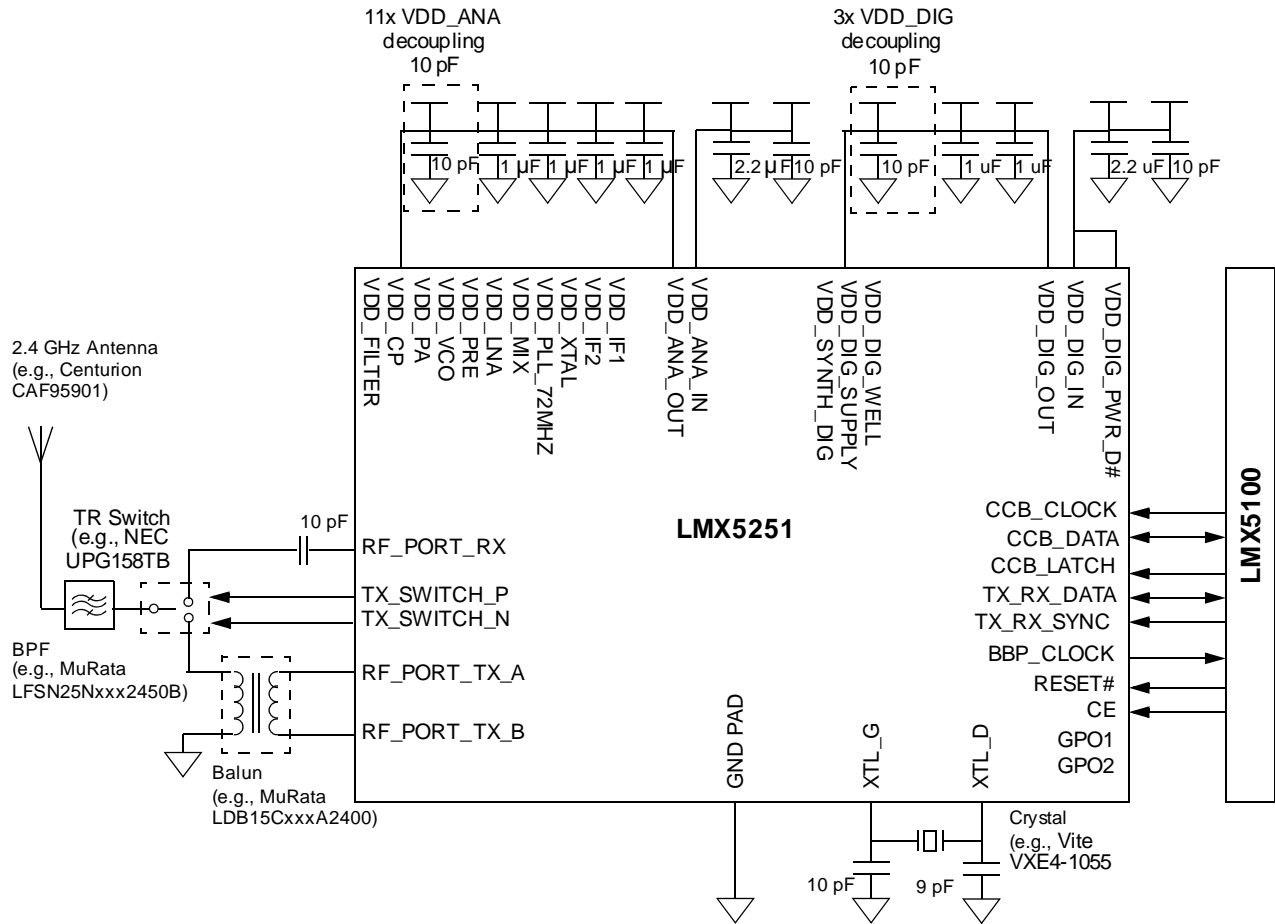


Figure 20. Serial Port Read-Back Timing Diagram


**Figure 21. Master to Slave Transfer Timing**

**Figure 22. Slave To Master Return Timing**

### Schematic and Layout Examples

Reference Dallas Board rev 2.0a schematic and layout for details.



NOTE: Tuning capacitors on a crystal can vary depending on design. Refer to the crystal manufacturer's specification to properly tune to board design.

Figure 23. RF Application Diagram

# LMX5251

SNOSCW3A – FEBRUARY 2004 – REVISED APRIL 2013

www.ti.com

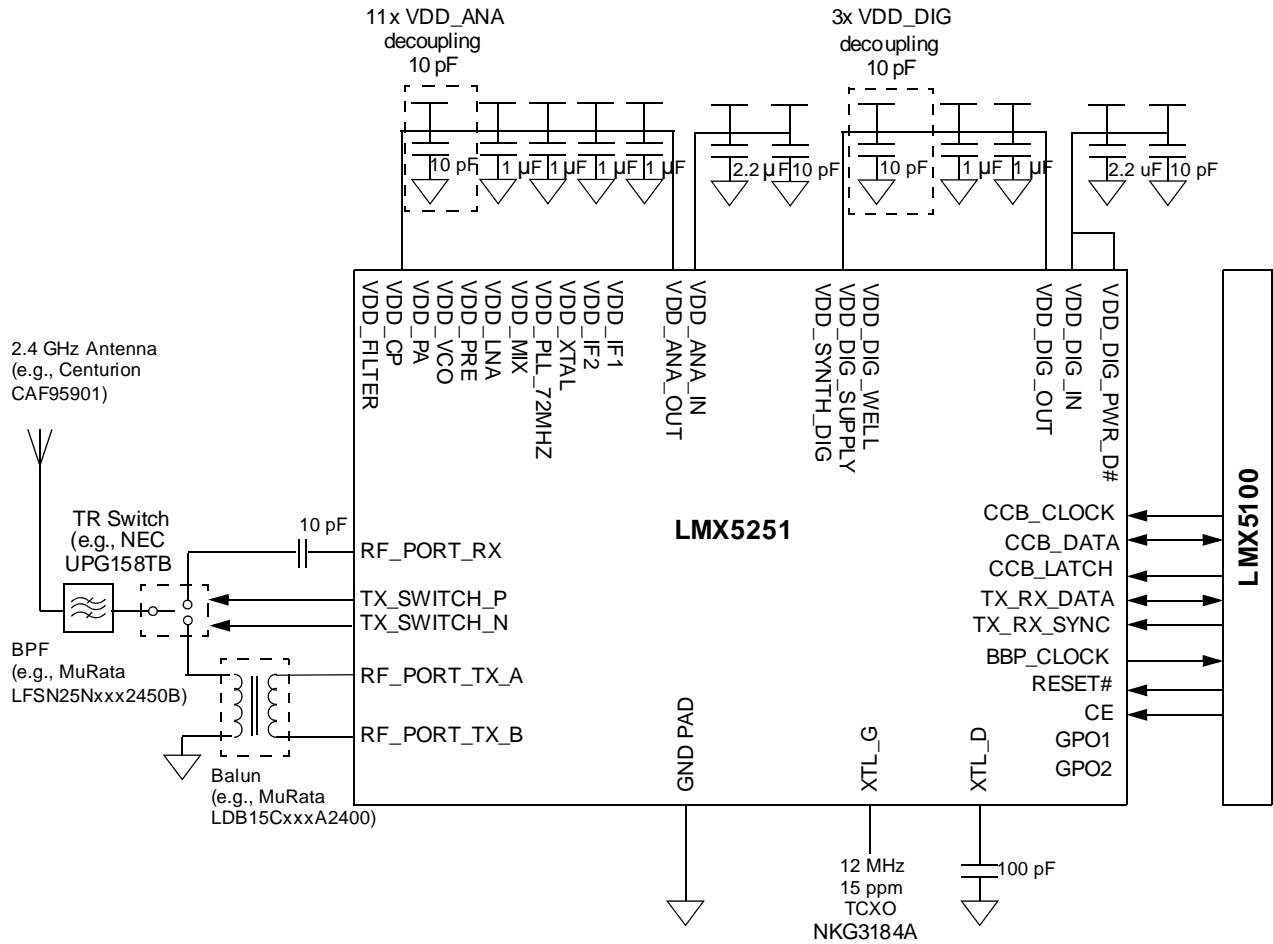


Figure 24. External TCXO

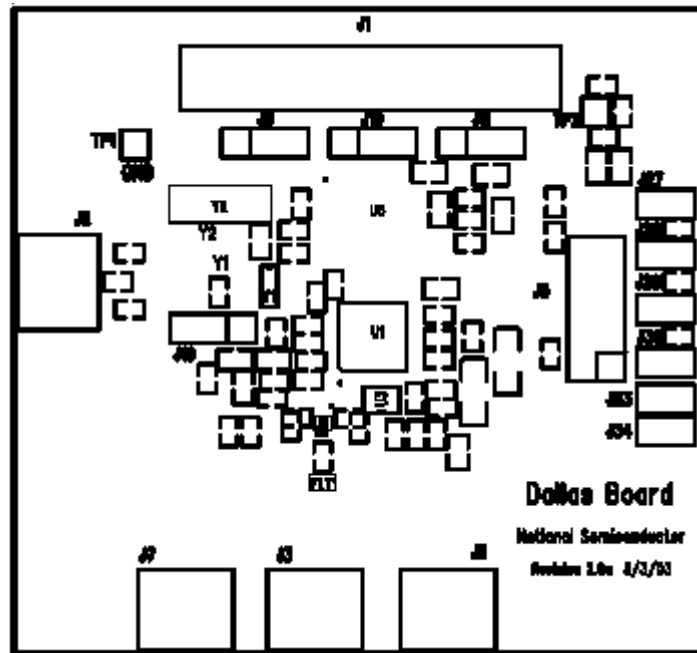
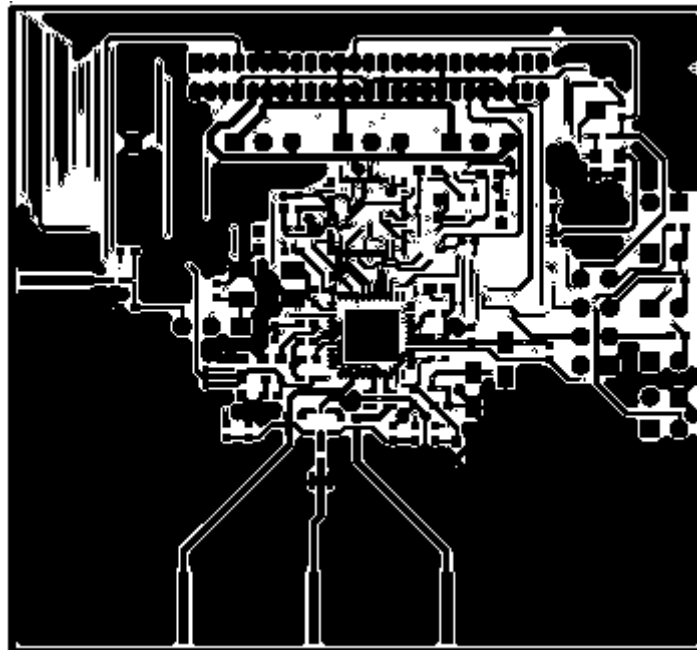
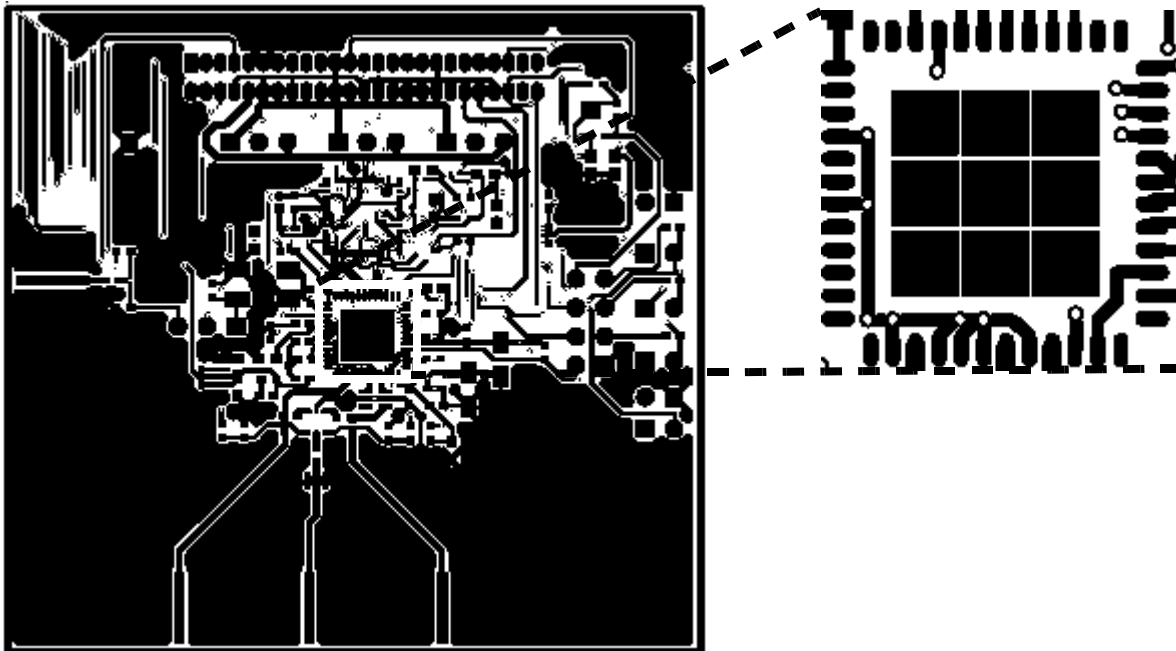


Figure 25. Component Layout Silkscreen - Layer 1



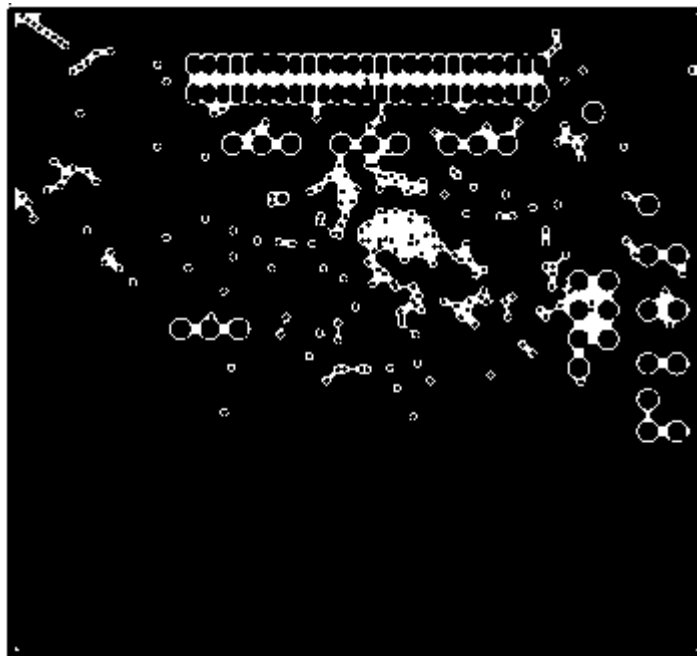
NOTE: Ground pad layout under ground slug of LMX5251 is required. These are connected by vias through all layers to ground plane. No pins on device are ground pins so center slug must be grounded. See detail in [Figure 27](#) "Component Placement - Layer 1 Ground Pad Detail" .

Figure 26. Component Placement - Layer 1



NOTE: Ground pad layout under ground slug of LMX5251 is required. These are connected by vias through all layers to ground plane. No pins on device are ground pins so center slug must be grounded.

**Figure 27. Component Placement - Layer 1 Ground Pad Detail**



**Figure 28. Solid Ground Plane - Layer 2**



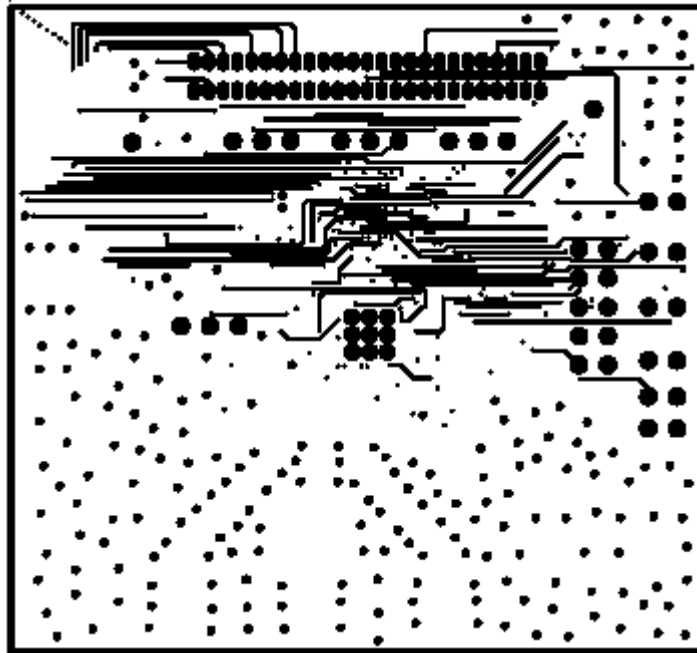


Figure 29. Signal Plane - Layer 3

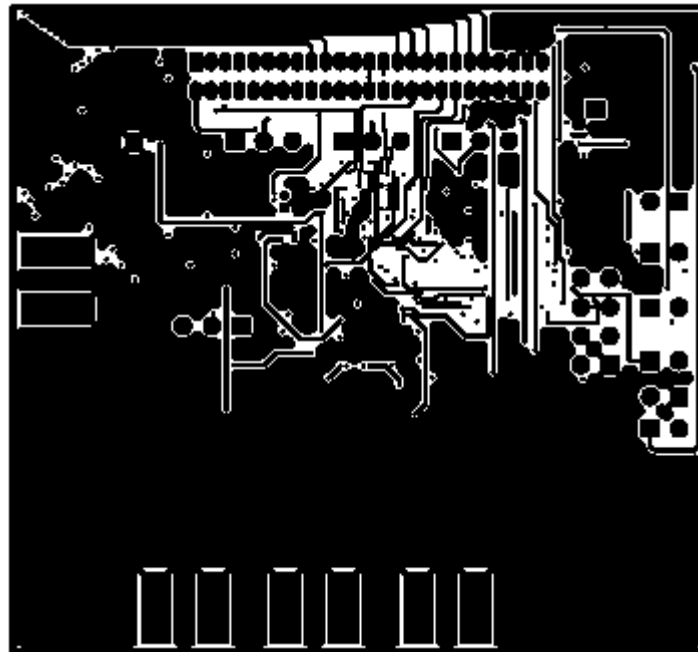


Figure 30. Bottom - Layer 4

**REVISION HISTORY**

<b>Changes from Original (February 2004) to Revision A</b>	<b>Page</b>
• Changed - converted this data sheet from National's PDF to Xmetal-DZ, formatted the revisions in the PDF as revision history. original date on this Data Sheet was February 2004, converted to DocZone April 2013 .....	1
• Changed 48-pin QFN bulleted item to 48-pin WQFN (Thin Quad Flatpack No lead) Package .....	1
• Changed Block diagram graphic and LMX5100/LMX5251 device interface graphic updated. ....	1
• Deleted the ORDERING INFORMATION table .....	2
• Changed - Full Temperature performance specified .....	6
• Changed - 'Several performance parameters updated based on characterization data: 1) Test specification reference and test point references added, 2) Current consumption numbers and low power states., 3) Analog and Digital LDO output voltage range., 4) Receiver and Transmitter performance, typical and worst case value (min or max depending on parameter), added or updated., 5) Synthesizer performance parameters updated.' .....	6
• Changed Crystal and Oscillator performance updated for $V_{OSC}$ voltage, ESR, Duty Cycle and Phase Noise added. ....	9
• Added Power Up Sequence section. ....	25
• Added Schematic and Layout examples . ....	28
• Added Smith charts added for TX/RX pin impedance and TX/RX return loss. ....	33
• Added External crystal oscillator section updated with tuning details and existing tested crystal specifications. ....	33
• Added TCXO section with existing tested crystal specification. ....	33
• Added Detailed RF interface description. ....	33

**PACKAGING INFORMATION**

Orderable Device	Status (1)	Package Type	Package Drawing	Pins	Package Qty	Eco Plan (2)	Lead/Ball Finish	MSL Peak Temp (3)	Op Temp (°C)	Top-Side Markings (4)	Samples
LMX5251SQX/NOPB	ACTIVE	WQFN	RHS	48	2500	Green (RoHS & no Sb/Br)	SN	Level-3-260C-168 HR	-40 to 85	X5251SQ	<a href="#">Samples</a>

(1) The marketing status values are defined as follows:

**ACTIVE:** Product device recommended for new designs.

**LIFEBUY:** TI has announced that the device will be discontinued, and a lifetime-buy period is in effect.

**NRND:** Not recommended for new designs. Device is in production to support existing customers, but TI does not recommend using this part in a new design.

**PREVIEW:** Device has been announced but is not in production. Samples may or may not be available.

**OBSOLETE:** TI has discontinued the production of the device.

(2) Eco Plan - The planned eco-friendly classification: Pb-Free (RoHS), Pb-Free (RoHS Exempt), or Green (RoHS & no Sb/Br) - please check <http://www.ti.com/productcontent> for the latest availability information and additional product content details.

**TBD:** The Pb-Free/Green conversion plan has not been defined.

**Pb-Free (RoHS):** TI's terms "Lead-Free" or "Pb-Free" mean semiconductor products that are compatible with the current RoHS requirements for all 6 substances, including the requirement that lead not exceed 0.1% by weight in homogeneous materials. Where designed to be soldered at high temperatures, TI Pb-Free products are suitable for use in specified lead-free processes.

**Pb-Free (RoHS Exempt):** This component has a RoHS exemption for either 1) lead-based flip-chip solder bumps used between the die and package, or 2) lead-based die adhesive used between the die and leadframe. The component is otherwise considered Pb-Free (RoHS compatible) as defined above.

**Green (RoHS & no Sb/Br):** TI defines "Green" to mean Pb-Free (RoHS compatible), and free of Bromine (Br) and Antimony (Sb) based flame retardants (Br or Sb do not exceed 0.1% by weight in homogeneous material)

(3) MSL, Peak Temp. -- The Moisture Sensitivity Level rating according to the JEDEC industry standard classifications, and peak solder temperature.

(4) Multiple Top-Side Markings will be inside parentheses. Only one Top-Side Marking contained in parentheses and separated by a "~" will appear on a device. If a line is indented then it is a continuation of the previous line and the two combined represent the entire Top-Side Marking for that device.

**Important Information and Disclaimer:** The information provided on this page represents TI's knowledge and belief as of the date that it is provided. TI bases its knowledge and belief on information provided by third parties, and makes no representation or warranty as to the accuracy of such information. Efforts are underway to better integrate information from third parties. TI has taken and continues to take reasonable steps to provide representative and accurate information but may not have conducted destructive testing or chemical analysis on incoming materials and chemicals. TI and TI suppliers consider certain information to be proprietary, and thus CAS numbers and other limited information may not be available for release.

In no event shall TI's liability arising out of such information exceed the total purchase price of the TI part(s) at issue in this document sold by TI to Customer on an annual basis.

**TAPE AND REEL INFORMATION**

**QUADRANT ASSIGNMENTS FOR PIN 1 ORIENTATION IN TAPE**


\*All dimensions are nominal

Device	Package Type	Package Drawing	Pins	SPQ	Reel Diameter (mm)	Reel Width W1 (mm)	A0 (mm)	B0 (mm)	K0 (mm)	P1 (mm)	W (mm)	Pin1 Quadrant
LMX5251SQX/NOPB	WQFN	RHS	48	2500	330.0	16.4	7.3	7.3	1.3	12.0	16.0	Q1

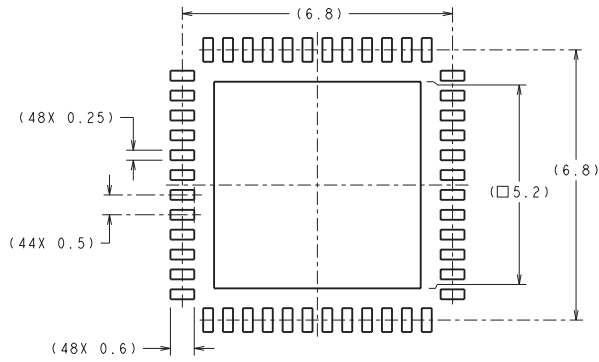
TAPE AND REEL BOX DIMENSIONS



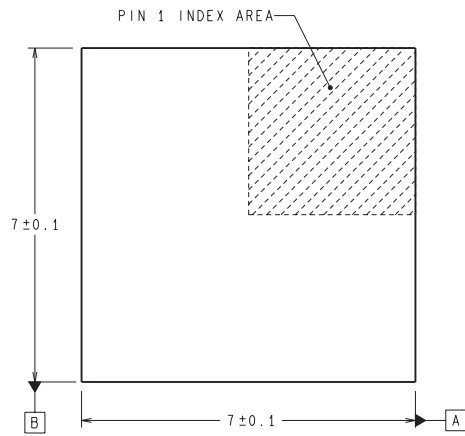
\*All dimensions are nominal

Device	Package Type	Package Drawing	Pins	SPQ	Length (mm)	Width (mm)	Height (mm)
LMX5251SQX/NOPB	WQFN	RHS	48	2500	367.0	367.0	38.0

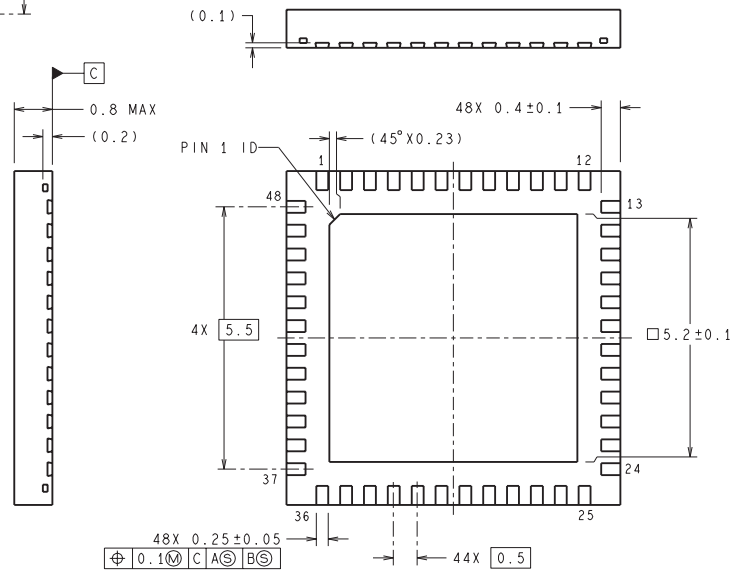
RHS0048B



RECOMMENDED LAND PATTERN



DIMENSIONS ARE IN MILLIMETERS  
DIMENSIONS IN ( ) FOR REFERENCE ONLY



SQA48B (Rev A)

## IMPORTANT NOTICE

Texas Instruments Incorporated and its subsidiaries (TI) reserve the right to make corrections, enhancements, improvements and other changes to its semiconductor products and services per JESD46, latest issue, and to discontinue any product or service per JESD48, latest issue. Buyers should obtain the latest relevant information before placing orders and should verify that such information is current and complete. All semiconductor products (also referred to herein as "components") are sold subject to TI's terms and conditions of sale supplied at the time of order acknowledgment.

TI warrants performance of its components to the specifications applicable at the time of sale, in accordance with the warranty in TI's terms and conditions of sale of semiconductor products. Testing and other quality control techniques are used to the extent TI deems necessary to support this warranty. Except where mandated by applicable law, testing of all parameters of each component is not necessarily performed.

TI assumes no liability for applications assistance or the design of Buyers' products. Buyers are responsible for their products and applications using TI components. To minimize the risks associated with Buyers' products and applications, Buyers should provide adequate design and operating safeguards.

TI does not warrant or represent that any license, either express or implied, is granted under any patent right, copyright, mask work right, or other intellectual property right relating to any combination, machine, or process in which TI components or services are used. Information published by TI regarding third-party products or services does not constitute a license to use such products or services or a warranty or endorsement thereof. Use of such information may require a license from a third party under the patents or other intellectual property of the third party, or a license from TI under the patents or other intellectual property of TI.

Reproduction of significant portions of TI information in TI data books or data sheets is permissible only if reproduction is without alteration and is accompanied by all associated warranties, conditions, limitations, and notices. TI is not responsible or liable for such altered documentation. Information of third parties may be subject to additional restrictions.

Resale of TI components or services with statements different from or beyond the parameters stated by TI for that component or service voids all express and any implied warranties for the associated TI component or service and is an unfair and deceptive business practice. TI is not responsible or liable for any such statements.

Buyer acknowledges and agrees that it is solely responsible for compliance with all legal, regulatory and safety-related requirements concerning its products, and any use of TI components in its applications, notwithstanding any applications-related information or support that may be provided by TI. Buyer represents and agrees that it has all the necessary expertise to create and implement safeguards which anticipate dangerous consequences of failures, monitor failures and their consequences, lessen the likelihood of failures that might cause harm and take appropriate remedial actions. Buyer will fully indemnify TI and its representatives against any damages arising out of the use of any TI components in safety-critical applications.

In some cases, TI components may be promoted specifically to facilitate safety-related applications. With such components, TI's goal is to help enable customers to design and create their own end-product solutions that meet applicable functional safety standards and requirements. Nonetheless, such components are subject to these terms.

No TI components are authorized for use in FDA Class III (or similar life-critical medical equipment) unless authorized officers of the parties have executed a special agreement specifically governing such use.

Only those TI components which TI has specifically designated as military grade or "enhanced plastic" are designed and intended for use in military/aerospace applications or environments. Buyer acknowledges and agrees that any military or aerospace use of TI components which have **not** been so designated is solely at the Buyer's risk, and that Buyer is solely responsible for compliance with all legal and regulatory requirements in connection with such use.

TI has specifically designated certain components as meeting ISO/TS16949 requirements, mainly for automotive use. In any case of use of non-designated products, TI will not be responsible for any failure to meet ISO/TS16949.

### Products

Audio	<a href="http://www.ti.com/audio">www.ti.com/audio</a>
Amplifiers	<a href="http://amplifier.ti.com">amplifier.ti.com</a>
Data Converters	<a href="http://dataconverter.ti.com">dataconverter.ti.com</a>
DLP® Products	<a href="http://www.dlp.com">www.dlp.com</a>
DSP	<a href="http://dsp.ti.com">dsp.ti.com</a>
Clocks and Timers	<a href="http://www.ti.com/clocks">www.ti.com/clocks</a>
Interface	<a href="http://interface.ti.com">interface.ti.com</a>
Logic	<a href="http://logic.ti.com">logic.ti.com</a>
Power Mgmt	<a href="http://power.ti.com">power.ti.com</a>
Microcontrollers	<a href="http://microcontroller.ti.com">microcontroller.ti.com</a>
RFID	<a href="http://www.ti-rfid.com">www.ti-rfid.com</a>
OMAP Applications Processors	<a href="http://www.ti.com/omap">www.ti.com/omap</a>
Wireless Connectivity	<a href="http://www.ti.com/wirelessconnectivity">www.ti.com/wirelessconnectivity</a>

### Applications

Automotive and Transportation	<a href="http://www.ti.com/automotive">www.ti.com/automotive</a>
Communications and Telecom	<a href="http://www.ti.com/communications">www.ti.com/communications</a>
Computers and Peripherals	<a href="http://www.ti.com/computers">www.ti.com/computers</a>
Consumer Electronics	<a href="http://www.ti.com/consumer-apps">www.ti.com/consumer-apps</a>
Energy and Lighting	<a href="http://www.ti.com/energy">www.ti.com/energy</a>
Industrial	<a href="http://www.ti.com/industrial">www.ti.com/industrial</a>
Medical	<a href="http://www.ti.com/medical">www.ti.com/medical</a>
Security	<a href="http://www.ti.com/security">www.ti.com/security</a>
Space, Avionics and Defense	<a href="http://www.ti.com/space-avionics-defense">www.ti.com/space-avionics-defense</a>
Video and Imaging	<a href="http://www.ti.com/video">www.ti.com/video</a>

### TI E2E Community

[e2e.ti.com](http://e2e.ti.com)