

## LM2722 High Speed Synchronous/Asynchronous MOSFET Driver

Check for Samples: [LM2722](#)

### FEATURES

- Synchronous or Asynchronous Operation
- Adaptive Shoot-Through Protection
- Input Under-Voltage-Lock-Out
- Typical 20ns Internal Delay
- Plastic 8-pin SOIC package

### APPLICATIONS

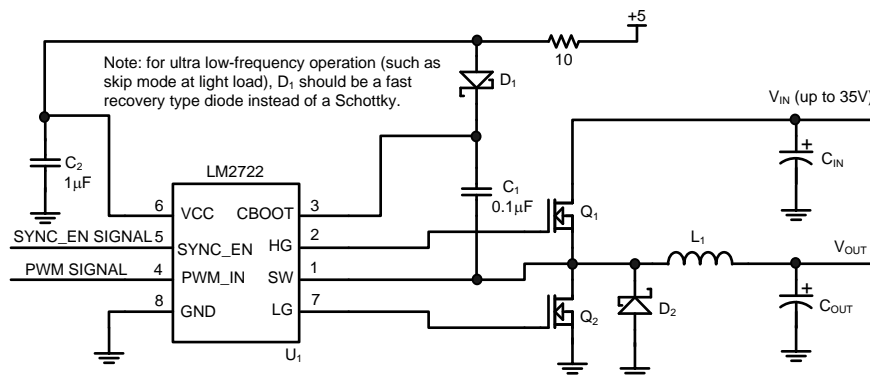
- Driver for LM2723 Intel Mobile Northwood CPU Core Power Supply.
- High Current DC/DC Power Supplies
- High Input Voltage Switching Regulators
- Fast Transient Microprocessors

### DESCRIPTION

The LM2722, part of the LM2726 family, is designed to be used with multi-phase controllers. This part differs from the LM2726 by changing the functionality of the SYNC\_EN pin from a whole chip enable to a low side MOSFET enable. As a result, the SYNC\_EN pin now provides control between Synchronous and Asynchronous operations. Having this control can be advantageous in portable systems since Asynchronous operations can be more efficient at very light loads.

The LM2722 drives both top and bottom MOSFETs in a push-pull structure simultaneously. It takes a logic level PWM input and splits it into two complimentary signals with a typical 20ns dead time in between. The built-in cross-conduction protection circuitry prevents the top and bottom FETs from turning on simultaneously. The cross-conduction protection circuitry detects both the driver outputs and will not turn on a driver until the other driver output is low. With a bias voltage of 5V, the peak sourcing and sinking current for each driver of the LM2722 is typically 3A. In an SOIC-8 package, each driver is able to handle 50mA average current. Input UVLO (Under-Voltage-Lock-Out) forces both driver outputs low to ensure proper power-up and power-down operation. The gate drive bias voltage needed by the high side MOSFET is obtained through an external bootstrap. Minimum pulse width is as low as 55ns.

### Typical Application



### NOTE

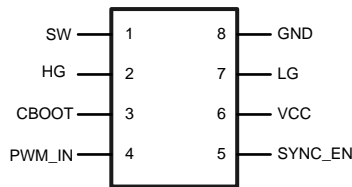
TI is an Intel Mobile Voltage Positioning (IMVP) licensee.



Please be aware that an important notice concerning availability, standard warranty, and use in critical applications of Texas Instruments semiconductor products and disclaimers thereto appears at the end of this data sheet.

All trademarks are the property of their respective owners.

## Connection Diagram



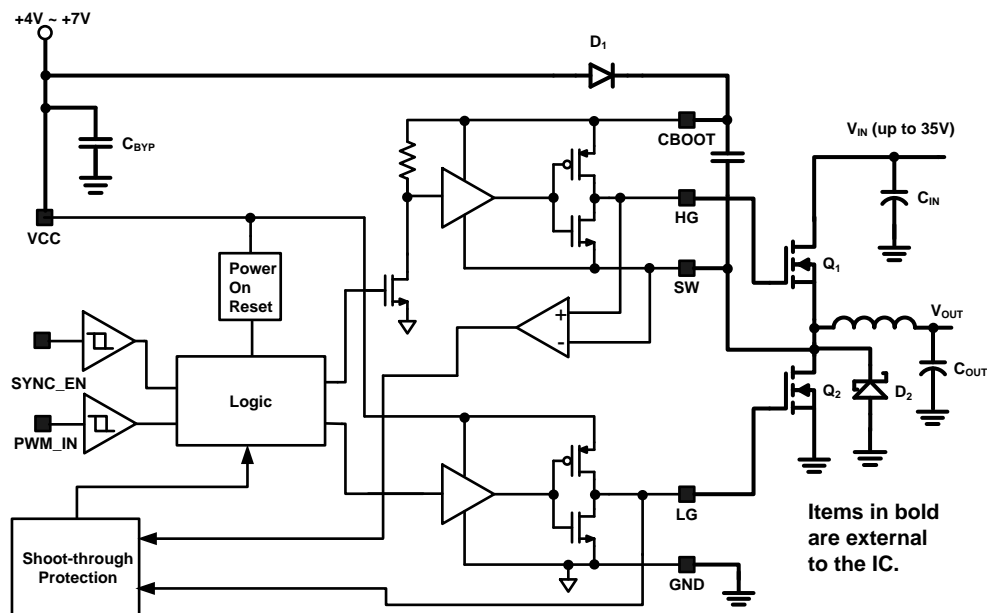
**Figure 1. SOIC (D)  
(Top View)**

## Pin Functions

### Pin Descriptions

Pin	Name	Function
1	SW	Top driver return. Should be connected to the common node of top and bottom FETs
2	HG	Top gate drive output
3	CBOOT	Bootstrap. Accepts a bootstrap voltage for powering the high-side driver
4	PWM_IN	Accepts a 5V-logic control signal
5	SYNC_EN	Low gate Enable
6	VCC	Connect to +5V supply
7	LG	Bottom gate drive output
8	GND	Ground

## Block Diagram



These devices have limited built-in ESD protection. The leads should be shorted together or the device placed in conductive foam during storage or handling to prevent electrostatic damage to the MOS gates.

### Absolute Maximum Ratings <sup>(1)</sup>

VCC	7.5V
CBOOT	42V
CBOOT to SW	8V
SW to PGND	36V
Junction Temperature	+150°C
Power Dissipation (2)	720mW
Storage Temperature	-65° to 150°C
ESD Susceptibility Human Body Model <sup>(3)</sup>	1kV
Soldering Time, Temperature	10sec., 300°C

- (1) **Absolute Maximum Ratings** are limits beyond which damage to the device may occur. **Operating ratings** are conditions under which the device operates correctly. Operating Ratings do not imply ensured performance limits.
- (2) Maximum allowable power dissipation is a function of the maximum junction temperature,  $T_{JMAX}$ , the junction-to-ambient thermal resistance,  $\theta_{JA}$ , and the ambient temperature,  $T_A$ . The maximum allowable power dissipation at any ambient temperature is calculated using:  $P_{MAX} = (T_{JMAX} - T_A) / \theta_{JA}$ . The junction-to-ambient thermal resistance,  $\theta_{JA}$ , for the LM2722, it is 172°C/W. For a  $T_{JMAX}$  of 150°C and  $T_A$  of 25°C, the maximum allowable power dissipation is 0.7W.
- (3) ESD machine model susceptibility is 100V.

### Operating Ratings <sup>(1)</sup>

VCC	4V to 7V
Junction Temperature Range	-40° to 125°C

- (1) **Absolute Maximum Ratings** are limits beyond which damage to the device may occur. **Operating ratings** are conditions under which the device operates correctly. Operating Ratings do not imply ensured performance limits.

## Electrical Characteristics

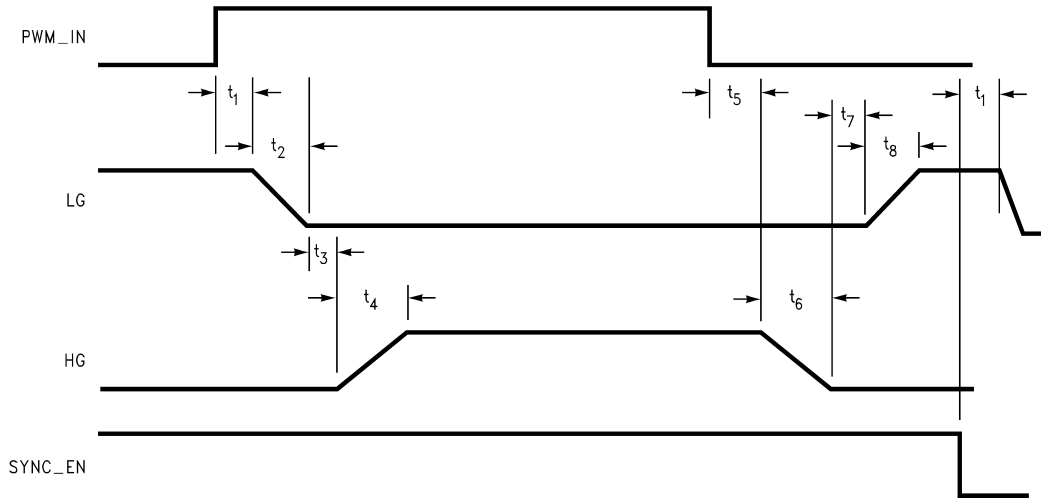
VCC = CBOOT = 5V, SW = GND = 0V, unless otherwise specified. Typical and limits appearing in plain type apply for T<sub>A</sub> = T<sub>J</sub> = +25°C. Limits appearing in **boldface** type apply over the entire operating temperature range.

Symbol	Parameter	Condition	Min	Typ	Max	Units
<b>POWER SUPPLY</b>						
I <sub>q_op</sub>	Operating Quiescent Current	PWM_IN = 0V		190	<b>300</b>	μA
<b>TOP DRIVER</b>						
	Peak Pull-Up Current	Test Circuit 1, V <sub>bias</sub> = 5V, R = 0.1Ω		3.0		A
	Pull-Up Rds_on	I <sub>CBOOT</sub> = I <sub>HG</sub> = 0.7A		1.0		Ω
	Peak Pull-down Current	Test Circuit 2, V <sub>bias</sub> = 5V, R = 0.1Ω		-3.2		A
	Pull-down Rds_on	I <sub>SW</sub> = I <sub>HG</sub> = 0.7A		0.5		Ω
t <sub>4</sub>	Rise Time	Timing Diagram, C <sub>LOAD</sub> = 3.3nF		17		ns
t <sub>6</sub>	Fall Time			12		ns
t <sub>3</sub>	Pull-Up Dead Time	Timing Diagram		23		ns
t <sub>5</sub>	Pull-Down Delay	Timing Diagram, from PWM_IN Falling Edge		27		ns
<b>BOTTOM DRIVER</b>						
	Peak Pull-Up Current	Test Circuit 3, V <sub>bias</sub> = 5V, R = 0.1Ω		3.2		A
	Pull-up Rds_on	I <sub>VCC</sub> = I <sub>LG</sub> = 0.7A		1.0		Ω
	Peak Pull-down Current	Test Circuit 4, V <sub>bias</sub> = 5V, R = 0.1Ω		3.2		A
	Pull-down Rds_on	I <sub>GND</sub> = I <sub>LG</sub> = 0.7A		0.5		Ω
t <sub>8</sub>	Rise Time	Timing Diagram, C <sub>LOAD</sub> = 3.3nF		17		ns
t <sub>2</sub>	Fall Time			14		ns
t <sub>7</sub>	Pull-up Dead Time	Timing Diagram		28		ns
t <sub>1</sub>	Pull-down Delay	Timing Diagram, from PWM_IN Rising Edge		13		ns
<b>LOGIC</b>						
V <sub>uvlo_up</sub>	Power On Threshold	VCC rises from 0V toward 5V	<b>4</b>	3.7		V
V <sub>uvlo_dn</sub>	Under-Voltage-Lock-Out Threshold			3.0	<b>2.5</b>	V
V <sub>uvlo_hys</sub>	Under-Voltage-Lock-Out Hysteresis			0.7		V
V <sub>IH_EN</sub>	SYNC_EN Pin High Input		<b>2.4</b>			V
V <sub>IL_EN</sub>	SYNC_EN Pin Low Input				<b>0.8</b>	V
I <sub>leak_EN</sub>	SYNC_EN Pin Leakage Current	EN = 5V	<b>-2</b>		<b>2</b>	μA
		EN = 0V	<b>-2</b>		<b>2</b>	
t <sub>on_min</sub>	Minimum Positive Input Pulse Width (1)			55		ns
t <sub>off_min</sub>	Minimum Negative Input Pulse Width (2)			55		
V <sub>IH_PWM</sub>	PWM_IN High Level Input Voltage	When PWM_IN pin goes high from 0V	<b>2.4</b>			V
V <sub>IL_PWM</sub>	PWM_IN Low Level Input Voltage	When PWM_IN pin goes low from 5V			<b>0.8</b>	

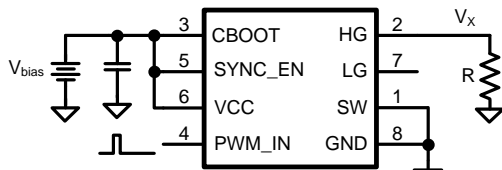
- (1) If after a rising edge, a falling edge occurs sooner than the specified value, the IC may intermittently fail to turn on the bottom gate when the top gate is off. As the falling edge occurs sooner and sooner, the driver may start to ignore the pulse and produce no output.
- (2) If after a falling edge, a rising edge occurs sooner than the specified value, the IC may intermittently fail to turn on the top gate when the bottom gate is off. As the rising edge occurs sooner and sooner, the driver may start to ignore the pulse and produce no output.

TEST CIRCUIT DIAGRAMS

Timing Diagram

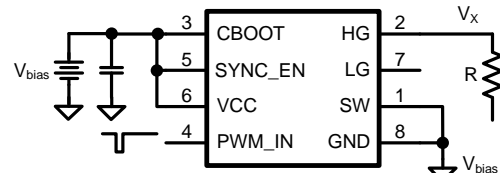


Test Circuits



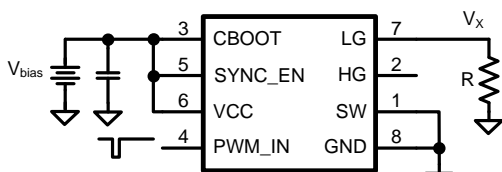
Width = 200ns, One Shot.

Figure 2. Test Circuit 1



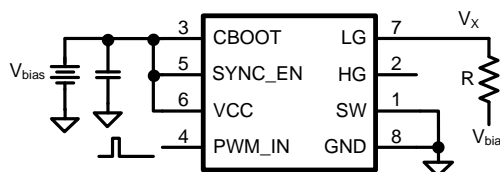
Width = 200ns, One Shot

Figure 3. Test Circuit 2



Width = 200ns, One Shot

Figure 4. Test Circuit 3



Width = 200ns, One Shot

Figure 5. Test Circuit 4

$$I_{\text{pull\_up}} = \frac{V_x}{R} \tag{1}$$

$$I_{\text{pull\_down}} = \frac{V_{\text{bias}} - V_x}{R} \tag{2}$$

$$R_{\text{ds\_pull\_up}} = \frac{V_{\text{bias}} - V_x}{V_x} \cdot R \tag{3}$$

$$R_{\text{ds\_pull\_down}} = \frac{V_x}{V_{\text{bias}} - V_x} \cdot R \tag{4}$$

## Typical Waveforms

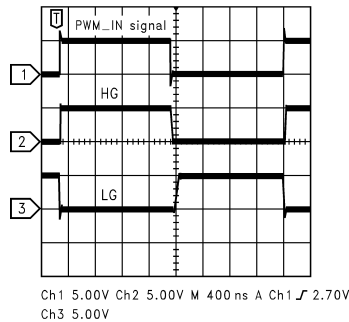


Figure 6. Switching Waveforms of Test Circuit

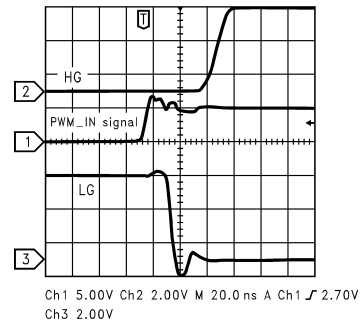


Figure 7. When Input Goes High

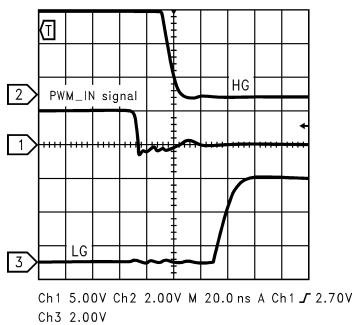


Figure 8. When Input Goes Low

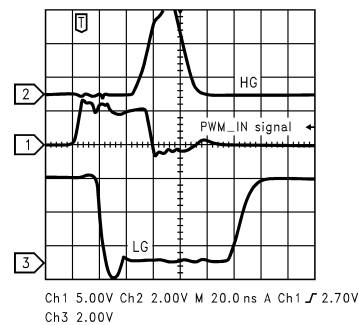


Figure 9. Minimum Positive Pulse

## Application Information

### MINIMUM PULSE WIDTH

In order for the shoot-through prevention circuitry in the LM2722 to work properly, the pulses into the PWM\_IN pin must be longer than 55ns. The internal logic waits until the first FET is off plus 20ns before turning on the opposite FET. If, after a falling edge, a rising edge occurs sooner than the specified time,  $t_{off\_min}$ , the IC may intermittently fail to turn on the top gate when the bottom gate is off. As the rising edge occurs sooner and sooner, the driver may start to ignore the pulse and produce no output. This condition results in the PWM\_IN pin in a high state and neither FET turned on. To get out of this state, the PWM\_IN pin must see a low signal for greater than 55ns, before the rising edge.

This will also assure that the gate drive bias voltage has been restored by forcing the top FET source and  $C_{boot}$  to ground first. Then the internal circuitry is reset and normal operation will resume.

Conversely, if, after a rising edge, a falling edge occurs sooner than the specified minimum pulse width,  $t_{on\_min}$ , the IC may intermittently fail to turn on the bottom FET. As the falling edge occurs sooner and sooner, the driver will start to ignore the pulse and produce no output. This will result in the  $t_{off}$  inductor current taking a path through a diode provided for non-synchronous operation. The circuit will resume synchronous operation when the rising PWM pulses exceed 55ns in duration.

### HIGH INPUT VOLTAGES OR HIGH OUTPUT CURRENTS

At input voltages above twice the output voltage and at higher power levels, the designer may find snubber networks and gate drive limiting useful in reducing EMI and preventing injurious transients. A small resistor, 1 $\Omega$  to 5 $\Omega$ , between the driver outputs and the MOSFET gates will slightly increase the rise time and fall time of the output stage and reduce switching noise. The trade-off is 1% to 2% in efficiency.

A series R-C snubber across in parallel with the bottom FET can also be used to reduce ringing. Values of 10nF and 10 $\Omega$  to 100 $\Omega$  are a good starting point.

---

**REVISION HISTORY**

<b>Changes from Revision C (March 2013) to Revision D</b>	<b>Page</b>
<hr/> <ul style="list-style-type: none"><li>• Changed layout of National Data Sheet to TI format .....</li></ul>	<hr/> <b>6</b>

**PACKAGING INFORMATION**

Orderable Device	Status (1)	Package Type	Package Drawing	Pins	Package Qty	Eco Plan (2)	Lead/Ball Finish	MSL Peak Temp (3)	Op Temp (°C)	Top-Side Markings (4)	Samples
LM2722MX	NRND	SOIC	D	8	2500	TBD	Call TI	Call TI		2722 M	
LM2722MX/NOPB	NRND	SOIC	D	8	2500	Green (RoHS & no Sb/Br)	CU SN	Level-1-260C-UNLIM		2722 M	

(1) The marketing status values are defined as follows:

**ACTIVE:** Product device recommended for new designs.

**LIFEBUY:** TI has announced that the device will be discontinued, and a lifetime-buy period is in effect.

**NRND:** Not recommended for new designs. Device is in production to support existing customers, but TI does not recommend using this part in a new design.

**PREVIEW:** Device has been announced but is not in production. Samples may or may not be available.

**OBSOLETE:** TI has discontinued the production of the device.

(2) Eco Plan - The planned eco-friendly classification: Pb-Free (RoHS), Pb-Free (RoHS Exempt), or Green (RoHS & no Sb/Br) - please check <http://www.ti.com/productcontent> for the latest availability information and additional product content details.

**TBD:** The Pb-Free/Green conversion plan has not been defined.

**Pb-Free (RoHS):** TI's terms "Lead-Free" or "Pb-Free" mean semiconductor products that are compatible with the current RoHS requirements for all 6 substances, including the requirement that lead not exceed 0.1% by weight in homogeneous materials. Where designed to be soldered at high temperatures, TI Pb-Free products are suitable for use in specified lead-free processes.

**Pb-Free (RoHS Exempt):** This component has a RoHS exemption for either 1) lead-based flip-chip solder bumps used between the die and package, or 2) lead-based die adhesive used between the die and leadframe. The component is otherwise considered Pb-Free (RoHS compatible) as defined above.

**Green (RoHS & no Sb/Br):** TI defines "Green" to mean Pb-Free (RoHS compatible), and free of Bromine (Br) and Antimony (Sb) based flame retardants (Br or Sb do not exceed 0.1% by weight in homogeneous material)

(3) MSL, Peak Temp. -- The Moisture Sensitivity Level rating according to the JEDEC industry standard classifications, and peak solder temperature.

(4) Only one of markings shown within the brackets will appear on the physical device.

**Important Information and Disclaimer:** The information provided on this page represents TI's knowledge and belief as of the date that it is provided. TI bases its knowledge and belief on information provided by third parties, and makes no representation or warranty as to the accuracy of such information. Efforts are underway to better integrate information from third parties. TI has taken and continues to take reasonable steps to provide representative and accurate information but may not have conducted destructive testing or chemical analysis on incoming materials and chemicals. TI and TI suppliers consider certain information to be proprietary, and thus CAS numbers and other limited information may not be available for release.

In no event shall TI's liability arising out of such information exceed the total purchase price of the TI part(s) at issue in this document sold by TI to Customer on an annual basis.



## TAPE AND REEL INFORMATION



### QUADRANT ASSIGNMENTS FOR PIN 1 ORIENTATION IN TAPE



\*All dimensions are nominal

Device	Package Type	Package Drawing	Pins	SPQ	Reel Diameter (mm)	Reel Width W1 (mm)	A0 (mm)	B0 (mm)	K0 (mm)	P1 (mm)	W (mm)	Pin1 Quadrant
LM2722MX	SOIC	D	8	2500	330.0	12.4	6.5	5.4	2.0	8.0	12.0	Q1
LM2722MX/NOPB	SOIC	D	8	2500	330.0	12.4	6.5	5.4	2.0	8.0	12.0	Q1

**TAPE AND REEL BOX DIMENSIONS**


\*All dimensions are nominal

Device	Package Type	Package Drawing	Pins	SPQ	Length (mm)	Width (mm)	Height (mm)
LM2722MX	SOIC	D	8	2500	367.0	367.0	35.0
LM2722MX/NOPB	SOIC	D	8	2500	367.0	367.0	35.0

D (R-PDSO-G8)

PLASTIC SMALL OUTLINE



- NOTES:
- A. All linear dimensions are in inches (millimeters).
  - B. This drawing is subject to change without notice.
  - C. Body length does not include mold flash, protrusions, or gate burrs. Mold flash, protrusions, or gate burrs shall not exceed 0.006 (0,15) each side.
  - D. Body width does not include interlead flash. Interlead flash shall not exceed 0.017 (0,43) each side.
  - E. Reference JEDEC MS-012 variation AA.

## IMPORTANT NOTICE

Texas Instruments Incorporated and its subsidiaries (TI) reserve the right to make corrections, enhancements, improvements and other changes to its semiconductor products and services per JESD46, latest issue, and to discontinue any product or service per JESD48, latest issue. Buyers should obtain the latest relevant information before placing orders and should verify that such information is current and complete. All semiconductor products (also referred to herein as "components") are sold subject to TI's terms and conditions of sale supplied at the time of order acknowledgment.

TI warrants performance of its components to the specifications applicable at the time of sale, in accordance with the warranty in TI's terms and conditions of sale of semiconductor products. Testing and other quality control techniques are used to the extent TI deems necessary to support this warranty. Except where mandated by applicable law, testing of all parameters of each component is not necessarily performed.

TI assumes no liability for applications assistance or the design of Buyers' products. Buyers are responsible for their products and applications using TI components. To minimize the risks associated with Buyers' products and applications, Buyers should provide adequate design and operating safeguards.

TI does not warrant or represent that any license, either express or implied, is granted under any patent right, copyright, mask work right, or other intellectual property right relating to any combination, machine, or process in which TI components or services are used. Information published by TI regarding third-party products or services does not constitute a license to use such products or services or a warranty or endorsement thereof. Use of such information may require a license from a third party under the patents or other intellectual property of the third party, or a license from TI under the patents or other intellectual property of TI.

Reproduction of significant portions of TI information in TI data books or data sheets is permissible only if reproduction is without alteration and is accompanied by all associated warranties, conditions, limitations, and notices. TI is not responsible or liable for such altered documentation. Information of third parties may be subject to additional restrictions.

Resale of TI components or services with statements different from or beyond the parameters stated by TI for that component or service voids all express and any implied warranties for the associated TI component or service and is an unfair and deceptive business practice. TI is not responsible or liable for any such statements.

Buyer acknowledges and agrees that it is solely responsible for compliance with all legal, regulatory and safety-related requirements concerning its products, and any use of TI components in its applications, notwithstanding any applications-related information or support that may be provided by TI. Buyer represents and agrees that it has all the necessary expertise to create and implement safeguards which anticipate dangerous consequences of failures, monitor failures and their consequences, lessen the likelihood of failures that might cause harm and take appropriate remedial actions. Buyer will fully indemnify TI and its representatives against any damages arising out of the use of any TI components in safety-critical applications.

In some cases, TI components may be promoted specifically to facilitate safety-related applications. With such components, TI's goal is to help enable customers to design and create their own end-product solutions that meet applicable functional safety standards and requirements. Nonetheless, such components are subject to these terms.

No TI components are authorized for use in FDA Class III (or similar life-critical medical equipment) unless authorized officers of the parties have executed a special agreement specifically governing such use.

Only those TI components which TI has specifically designated as military grade or "enhanced plastic" are designed and intended for use in military/aerospace applications or environments. Buyer acknowledges and agrees that any military or aerospace use of TI components which have **not** been so designated is solely at the Buyer's risk, and that Buyer is solely responsible for compliance with all legal and regulatory requirements in connection with such use.

TI has specifically designated certain components as meeting ISO/TS16949 requirements, mainly for automotive use. In any case of use of non-designated products, TI will not be responsible for any failure to meet ISO/TS16949.

### Products

Audio	<a href="http://www.ti.com/audio">www.ti.com/audio</a>
Amplifiers	<a href="http://amplifier.ti.com">amplifier.ti.com</a>
Data Converters	<a href="http://dataconverter.ti.com">dataconverter.ti.com</a>
DLP® Products	<a href="http://www.dlp.com">www.dlp.com</a>
DSP	<a href="http://dsp.ti.com">dsp.ti.com</a>
Clocks and Timers	<a href="http://www.ti.com/clocks">www.ti.com/clocks</a>
Interface	<a href="http://interface.ti.com">interface.ti.com</a>
Logic	<a href="http://logic.ti.com">logic.ti.com</a>
Power Mgmt	<a href="http://power.ti.com">power.ti.com</a>
Microcontrollers	<a href="http://microcontroller.ti.com">microcontroller.ti.com</a>
RFID	<a href="http://www.ti-rfid.com">www.ti-rfid.com</a>
OMAP Applications Processors	<a href="http://www.ti.com/omap">www.ti.com/omap</a>
Wireless Connectivity	<a href="http://www.ti.com/wirelessconnectivity">www.ti.com/wirelessconnectivity</a>

### Applications

Automotive and Transportation	<a href="http://www.ti.com/automotive">www.ti.com/automotive</a>
Communications and Telecom	<a href="http://www.ti.com/communications">www.ti.com/communications</a>
Computers and Peripherals	<a href="http://www.ti.com/computers">www.ti.com/computers</a>
Consumer Electronics	<a href="http://www.ti.com/consumer-apps">www.ti.com/consumer-apps</a>
Energy and Lighting	<a href="http://www.ti.com/energy">www.ti.com/energy</a>
Industrial	<a href="http://www.ti.com/industrial">www.ti.com/industrial</a>
Medical	<a href="http://www.ti.com/medical">www.ti.com/medical</a>
Security	<a href="http://www.ti.com/security">www.ti.com/security</a>
Space, Avionics and Defense	<a href="http://www.ti.com/space-avionics-defense">www.ti.com/space-avionics-defense</a>
Video and Imaging	<a href="http://www.ti.com/video">www.ti.com/video</a>

### TI E2E Community

[e2e.ti.com](http://e2e.ti.com)