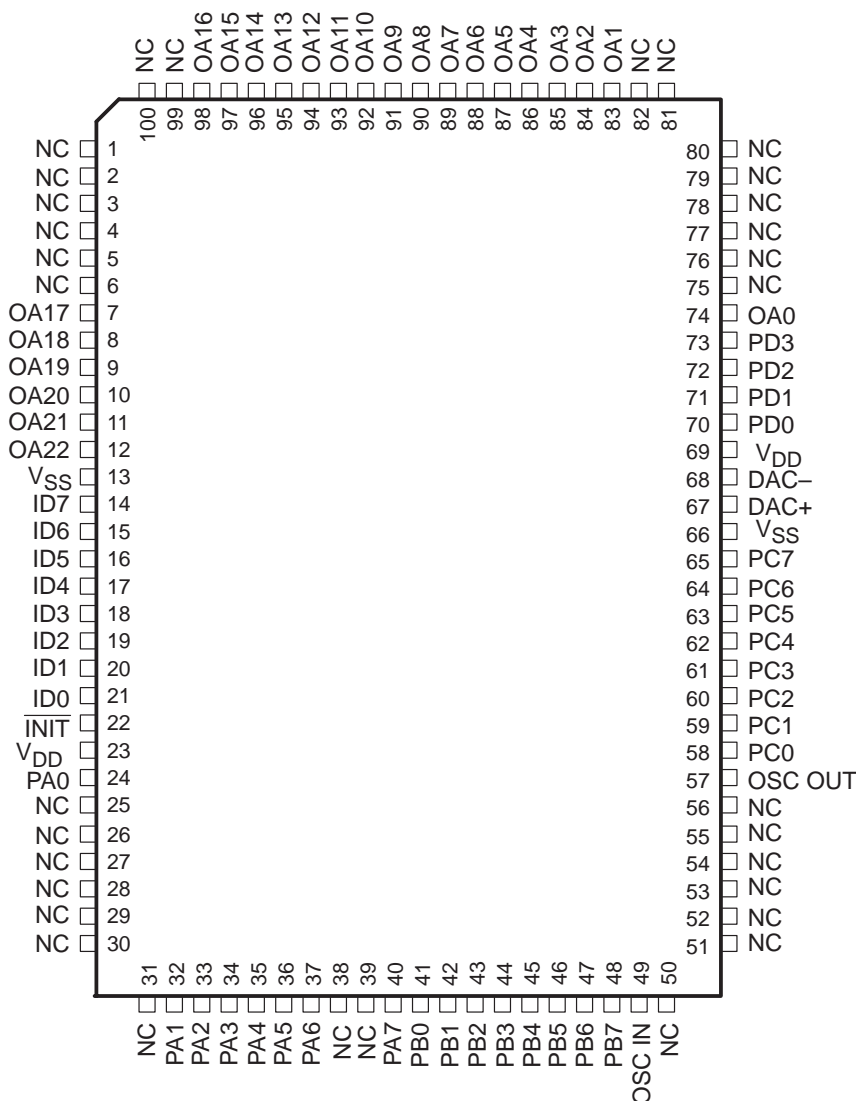


- Interface to External ROM/EPROM (Up to 8 MBytes)
- 8-Bit Microprocessor with 61 instructions
- 32 Twelve-Bit Words and 992 Bytes of RAM
- 4K Internal ROM
- 3.3V to 6.5V CMOS Technology for Low Power Dissipation
- 28 Software-Configurable I/O Lines
- 10-kHz or 8-kHz Speech Sample Rate

description

The MSP50C30 combines an 8-bit microprocessor, two speech synthesizers, ROM, RAM, and I/O in a low-cost single-chip system. The architecture uses the same arithmetic logic unit (ALU) for the two synthesizers and the microprocessor, thus reducing chip area and cost and enabling the microprocessor to do a multiply operation in 0.8 μ s. The MSP50C30 features two independent channels of linear predictive coding (LPC), which synthesize high-quality speech at a low data rate. Pulse-code modulation (PCM) can produce music or sound effects. For more information, see the MSP50C30 User's Guide (TI literature number SPSU012).

**PJM PACKAGE
(TOP VIEW)**



Please be aware that an important notice concerning availability, standard warranty, and use in critical applications of Texas Instruments semiconductor products and disclaimers thereto appears at the end of this data sheet.

PRODUCTION DATA information is current as of publication date. Products conform to specifications per the terms of Texas Instruments standard warranty. Production processing does not necessarily include testing of all parameters.

**TEXAS
INSTRUMENTS**

POST OFFICE BOX 655303 • DALLAS, TEXAS 75265

Copyright © 1998, Texas Instruments Incorporated

MSP50C30 MIXED-SIGNAL PROCESSOR

SPSS021 NOVEMBER 1998

absolute maximum ratings over operating free-air temperature range†

Supply voltage range, V_{DD} (see Note 1)	-0.3 V to 8 V
Supply current, I_{DD} or I_{SS} (see Note 2)	100 mA
Input voltage range, V_I (see Note 1)	-0.3 V to $V_{DD} + 0.3$ V
Output voltage range, V_O (see Note 1)	-0.3 V to $V_{DD} + 0.3$ V
Storage temperature range	-30°C to 125°C

† Stresses beyond those listed under “absolute maximum ratings” may cause permanent damage to the device. These are stress ratings only, and functional operation of the device at these or any other conditions beyond those indicated under “recommended operating conditions” is not implied. Exposure to absolute-maximum-rated conditions for extended periods may affect device reliability.

- NOTES: 1. All voltages are with respect to ground.
 2. The total supply current includes the current out of all the I/O terminals and DAC terminals as well as the operating current of the device.

recommended operating conditions (MSP50C30)

			MIN	MAX	UNIT
V_{DD}	Supply voltage†		3.3	6.5	V
V_{IH}	High-level input voltage	$V_{DD} = 3.3$ V	2.5	3.3	V
		$V_{DD} = 5$ V	3.8	5	
		$V_{DD} = 6$ V	4.5	6	
V_{IL}	Low-level input voltage	$V_{DD} = 3.3$ V	0	0.65	V
		$V_{DD} = 5$ V	0	1	
		$V_{DD} = 6$ V	0	1.3	
T_A	Operating free-air temperature	Device functionality	0	70	°C
$R_{speaker}$	Minimum speaker impedance	Direct speaker drive using 2 pin push-pull DAC option	32		Ω

† Unless otherwise noted, all voltages are with respect to V_{SS} .



electrical characteristics over recommended ranges of supply voltage and operating free-air temperature (unless otherwise noted)

PARAMETER		TEST CONDITIONS	MIN	TYP	MAX	UNIT
V _{T+}	Positive-going threshold voltage (INIT)	V _{DD} = 3.5 V		2		V
		V _{DD} = 6 V		3.4		
V _{T-}	Negative-going threshold voltage (INIT)	V _{DD} = 3.5 V		1.6		V
		V _{DD} = 6 V		2.3		
V _{hys}	Hysteresis (V _{T+} - V _{T-}) (INIT)	V _{DD} = 3.5 V		0.4		V
		V _{DD} = 6 V		1.1		
I _{lkg}	Input leakage current (except for OSC IN)				2	μA
I _{standby}	Standby current ($\overline{\text{INIT}}$ low, SETOFF)				10	μA
I _{DD} [†]	Supply current	V _{DD} = 3.3 V,		2.1		mA
		V _{DD} = 5 V,		3.1		
		V _{DD} = 6 V,		4.5		
I _{OH}	High-level output current (PA, PB)	V _{DD} = 3.3 V, V _{OH} = 2.75 V	-4	-12		mA
		V _{DD} = 5 V, V _{OH} = 4.5 V	-5	-14		
		V _{DD} = 6 V, V _{OH} = 5.5 V	-6	-15		
		V _{DD} = 3.3 V, V _{OH} = 2.2 V	-8	-20		mA
		V _{DD} = 5 V, V _{OH} = 3.33 V	-14	-40		
		V _{DD} = 6 V, V _{OH} = 4 V	-20	-51		
I _{OL}	Low-level output current (PA, PB)	V _{DD} = 3.3 V, V _{OL} = 0.5 V	5	9		mA
		V _{DD} = 5 V, V _{OL} = 0.5 V	5	9		
		V _{DD} = 6 V, V _{OL} = 0.5 V	5	9		
		V _{DD} = 3.3 V, V _{OL} = 1.1 V	10	19		mA
		V _{DD} = 5 V, V _{OL} = 1.67 V	20	29		
		V _{DD} = 6 V, V _{OL} = 2 V	25	35		
I _{OH}	High-level output current (D/A)	V _{DD} = 3.3 V, V _{OH} = 2.75 V	-30	-50		mA
		V _{DD} = 5 V, V _{OH} = 4.5 V	-35	-60		
		V _{DD} = 6 V, V _{OH} = 5.5 V	-40	-65		
		V _{DD} = 3.3 V, V _{OH} = 2.3 V	-50	-90		mA
		V _{DD} = 5 V, V _{OH} = 4 V	-90	-140		
		V _{DD} = 6 V, V _{OH} = 5 V	-100	-150		
I _{OL}	Low-level output current (D/A)	V _{DD} = 3.3 V, V _{OL} = 0.5 V	50	80		mA
		V _{DD} = 5 V, V _{OL} = 0.5 V	70	90		
		V _{DD} = 6 V, V _{OL} = 0.5 V	80	110		
		V _{DD} = 3.3 V, V _{OL} = 1 V	100	140		mA
		V _{DD} = 5 V, V _{OL} = 1 V	140			
		V _{DD} = 6 V, V _{OL} = 1 V	150			
Pullup resistance		Resistors selected by software and connected between terminal and V _{DD}	10	20	50	kΩ
f _{osc(low)}	Oscillator frequency [‡]	V _{DD} = 5 V, T _A = 25°C, Target frequency = 15.36 MHz	14.89	15.36	15.86	MHz
f _{osc(high)}	Oscillator frequency [‡]	V _{DD} = 5 V, T _A = 25°C, Target frequency = 19.2 MHz	18.62	19.2	19.7	MHz

[†] Operating current assumes all inputs are tied to either V_{SS} or V_{DD} with no input currents due to programmed pullup resistors. The DAC output and other outputs are open circuited.

[‡] The frequency of the internal clock has a temperature coefficient of approximately -0.2 %/°C and a V_{DD} coefficient of approximately ±1%/V.

MSP50C30 MIXED-SIGNAL PROCESSOR

SPSS021 NOVEMBER 1998

switching characteristics

PARAMETER		TEST CONDITIONS	MIN	NOM	MAX	UNIT
t _r	Rise time	V _{DD} = 3.3 V, C _L = 100 pF, 10% to 90%	50			ns
	PA, PB, PC, PD, D/A					
t _f	Fall time	V _{DD} = 3.3 V, C _L = 50 pF, 10% to 90%	50			ns
t _f	Fall time	V _{DD} = 3.3 V, C _L = 100 pF, 10% to 90%	50			ns
t _r	Rise time	V _{DD} = 3.3 V, C _L = 50 pF, 10% to 90%	50			ns

timing requirements

		MIN	MAX	UNIT
Initialization				
t _{INIT}	$\overline{\text{INIT}}$ pulsed low while the MSP50x3x has power applied (see Figure 1)	1		μs
Wakeup				
t _{su(wakeup)}	Setup time prior to wakeup terminal negative transition (see Figure 2)	1		μs
External Interrupt				
t _{su(interrupt)}	Setup time prior to B1 terminal negative transition (see Figure 3)	f _{clock} = 15.36 MHz	1	μs
		f _{clock} = 19.2 MHz	1.5	
Writing (Slave Mode)				
t _{su1(B1)}	Setup time, B1 low before B0 goes low (see Figure 4)	20		ns
t _{su(d)}	Setup time, data valid before B0 goes high (see Figure 4)	100		ns
t _{h1(B1)}	Hold time, B1 low after B0 goes high (see Figure 4)	20		ns
t _{h(d)}	Hold time, data valid after B0 goes high (see Figure 4)	30		ns
t _w	Pulse duration, B0 low (see Figure 4)	100		ns
t _r	Rise time, B0 (see Figure 4)		50	ns
t _f	Fall time, B0 (see Figure 4)		50	ns
Reading (Slave Mode)				
t _{su2(B1)}	Setup time, B1 before B0 goes low (see Figure 5)	20		ns
t _{h2(B1)}	Hold time, B1 after B0 goes high (see Figure 5)	20		ns
t _{dis}	Output disable time, data valid after B0 goes high (see Figure 5)	0	30	ns
t _w	Pulse duration, B0 low (see Figure 5)	100		ns
t _r	Rise time, B0 (see Figure 5)		50	ns
t _f	Fall time, B0 (see Figure 5)		50	ns
t _d	Delay time for B0 low to data valid (see Figure 5)		50	ns
External ROM				
t _{a(ROM)}	ROM access time		400	ns



PARAMETER MEASUREMENT INFORMATION

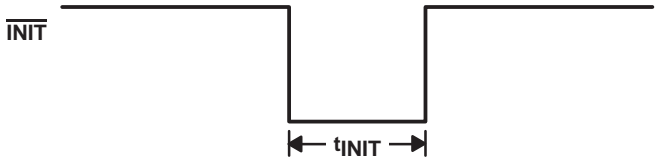


Figure 1. Initialization Timing Diagram

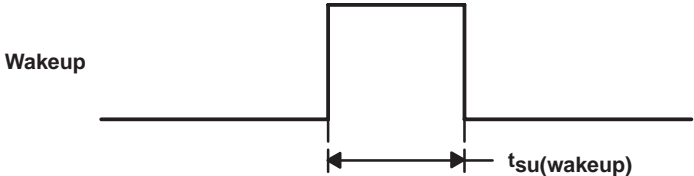


Figure 2. Wakeup Terminal Setup Timing Diagram

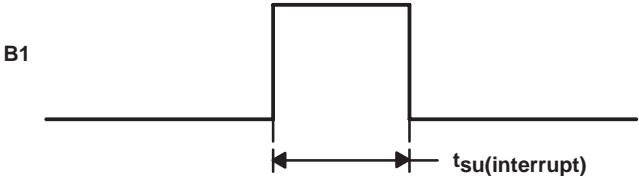


Figure 3. External Interrupt Terminal Setup Timing Diagram

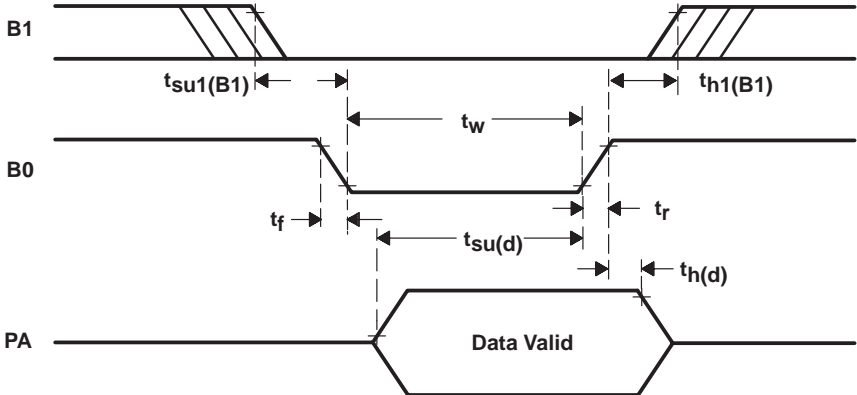


Figure 4. Write Timing Diagram (Slave Mode)

PARAMETER MEASUREMENT INFORMATION

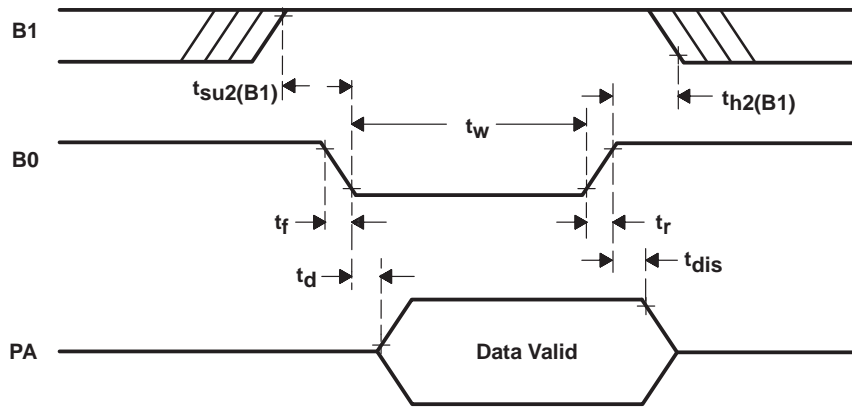
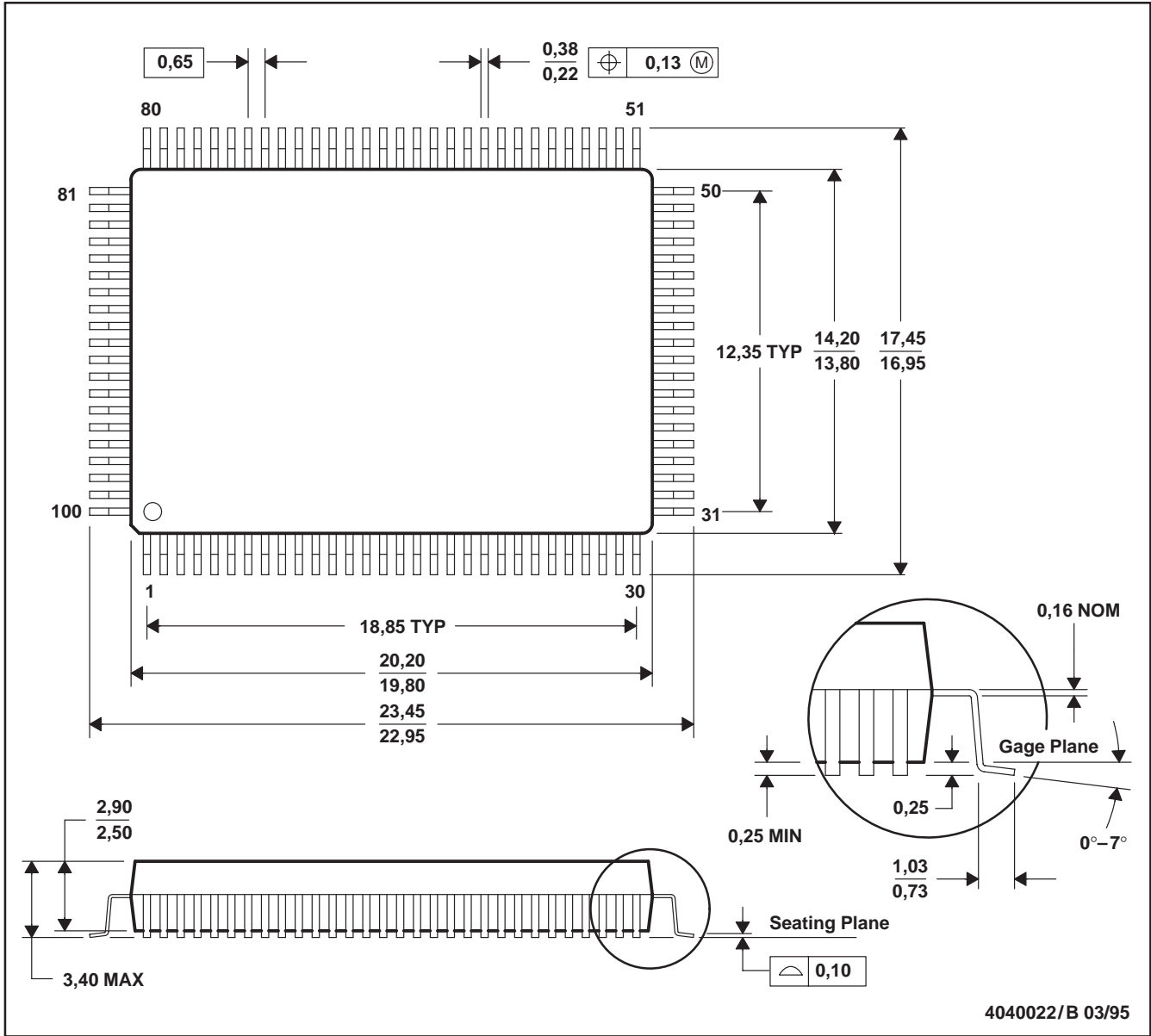


Figure 5. Read Timing Diagram (Slave Mode)

MECHANICAL DATA

PJM (R-PQFP-G100)

PLASTIC QUAD FLATPACK



- NOTES: A. All linear dimensions are in millimeters.
 B. This drawing is subject to change without notice.
 C. Falls within JEDEC MS-022

PACKAGING INFORMATION

Orderable Device	Status ⁽¹⁾	Package Type	Package Drawing	Pins	Package Qty	Eco Plan ⁽²⁾	Lead/Ball Finish	MSL Peak Temp ⁽³⁾
CSM30003PJM	OBSOLETE	QFP	PJM	100		TBD	Call TI	Call TI
CSM30003Y	OBSOLETE	DIESALE	Y	0		TBD	Call TI	Call TI

⁽¹⁾ The marketing status values are defined as follows:

ACTIVE: Product device recommended for new designs.

LIFEBUY: TI has announced that the device will be discontinued, and a lifetime-buy period is in effect.

NRND: Not recommended for new designs. Device is in production to support existing customers, but TI does not recommend using this part in a new design.

PREVIEW: Device has been announced but is not in production. Samples may or may not be available.

OBSOLETE: TI has discontinued the production of the device.

⁽²⁾ Eco Plan - The planned eco-friendly classification: Pb-Free (RoHS), Pb-Free (RoHS Exempt), or Green (RoHS & no Sb/Br) - please check <http://www.ti.com/productcontent> for the latest availability information and additional product content details.

TBD: The Pb-Free/Green conversion plan has not been defined.

Pb-Free (RoHS): TI's terms "Lead-Free" or "Pb-Free" mean semiconductor products that are compatible with the current RoHS requirements for all 6 substances, including the requirement that lead not exceed 0.1% by weight in homogeneous materials. Where designed to be soldered at high temperatures, TI Pb-Free products are suitable for use in specified lead-free processes.

Pb-Free (RoHS Exempt): This component has a RoHS exemption for either 1) lead-based flip-chip solder bumps used between the die and package, or 2) lead-based die adhesive used between the die and leadframe. The component is otherwise considered Pb-Free (RoHS compatible) as defined above.

Green (RoHS & no Sb/Br): TI defines "Green" to mean Pb-Free (RoHS compatible), and free of Bromine (Br) and Antimony (Sb) based flame retardants (Br or Sb do not exceed 0.1% by weight in homogeneous material)

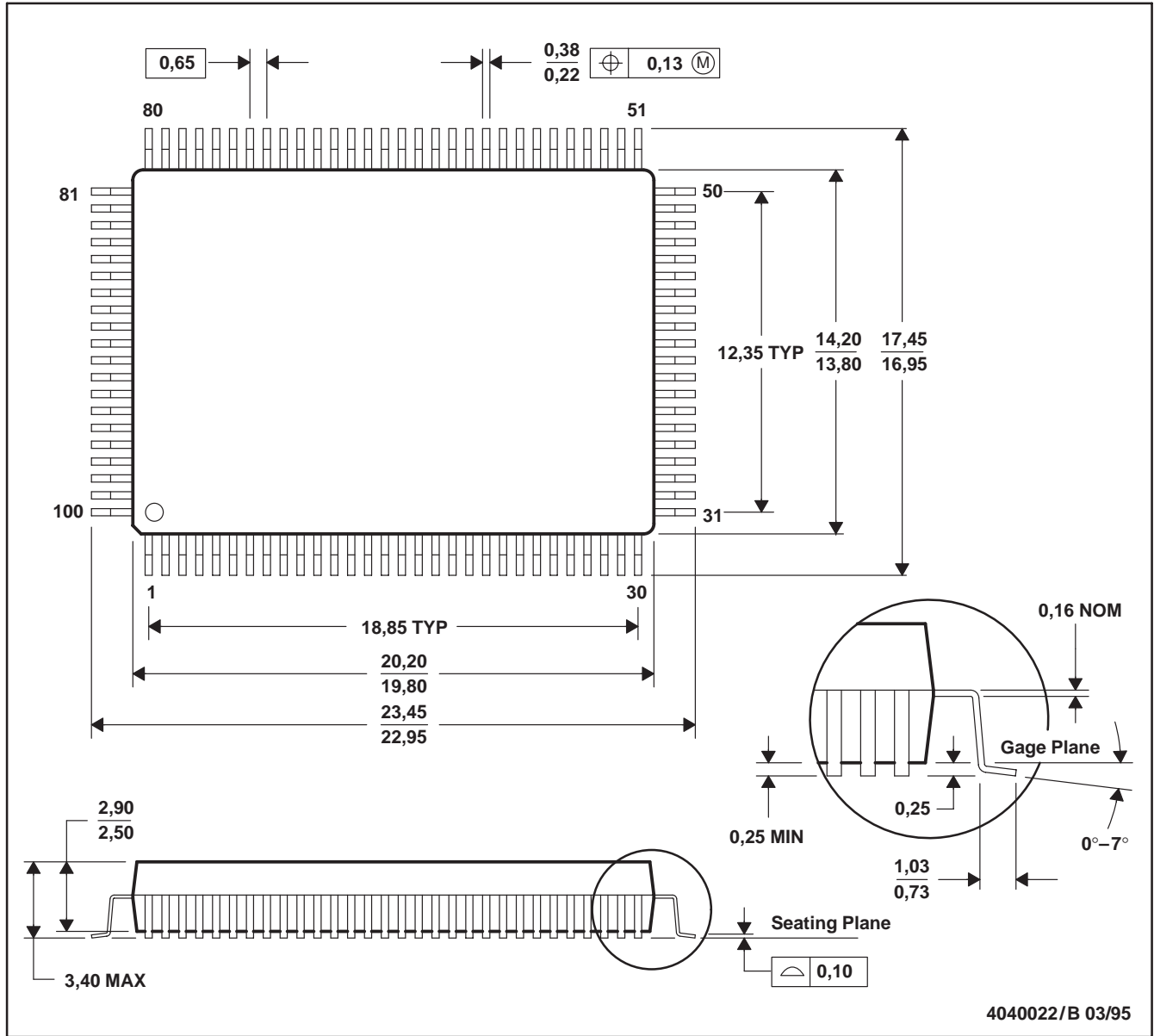
⁽³⁾ MSL, Peak Temp. -- The Moisture Sensitivity Level rating according to the JEDEC industry standard classifications, and peak solder temperature.

Important Information and Disclaimer:The information provided on this page represents TI's knowledge and belief as of the date that it is provided. TI bases its knowledge and belief on information provided by third parties, and makes no representation or warranty as to the accuracy of such information. Efforts are underway to better integrate information from third parties. TI has taken and continues to take reasonable steps to provide representative and accurate information but may not have conducted destructive testing or chemical analysis on incoming materials and chemicals. TI and TI suppliers consider certain information to be proprietary, and thus CAS numbers and other limited information may not be available for release.

In no event shall TI's liability arising out of such information exceed the total purchase price of the TI part(s) at issue in this document sold by TI to Customer on an annual basis.

PJM (R-PQFP-G100)

PLASTIC QUAD FLATPACK



- NOTES: A. All linear dimensions are in millimeters.
 B. This drawing is subject to change without notice.
 C. Falls within JEDEC MS-022

IMPORTANT NOTICE

Texas Instruments Incorporated and its subsidiaries (TI) reserve the right to make corrections, modifications, enhancements, improvements, and other changes to its products and services at any time and to discontinue any product or service without notice. Customers should obtain the latest relevant information before placing orders and should verify that such information is current and complete. All products are sold subject to TI's terms and conditions of sale supplied at the time of order acknowledgment.

TI warrants performance of its hardware products to the specifications applicable at the time of sale in accordance with TI's standard warranty. Testing and other quality control techniques are used to the extent TI deems necessary to support this warranty. Except where mandated by government requirements, testing of all parameters of each product is not necessarily performed.

TI assumes no liability for applications assistance or customer product design. Customers are responsible for their products and applications using TI components. To minimize the risks associated with customer products and applications, customers should provide adequate design and operating safeguards.

TI does not warrant or represent that any license, either express or implied, is granted under any TI patent right, copyright, mask work right, or other TI intellectual property right relating to any combination, machine, or process in which TI products or services are used. Information published by TI regarding third-party products or services does not constitute a license from TI to use such products or services or a warranty or endorsement thereof. Use of such information may require a license from a third party under the patents or other intellectual property of the third party, or a license from TI under the patents or other intellectual property of TI.

Reproduction of TI information in TI data books or data sheets is permissible only if reproduction is without alteration and is accompanied by all associated warranties, conditions, limitations, and notices. Reproduction of this information with alteration is an unfair and deceptive business practice. TI is not responsible or liable for such altered documentation. Information of third parties may be subject to additional restrictions.

Resale of TI products or services with statements different from or beyond the parameters stated by TI for that product or service voids all express and any implied warranties for the associated TI product or service and is an unfair and deceptive business practice. TI is not responsible or liable for any such statements.

TI products are not authorized for use in safety-critical applications (such as life support) where a failure of the TI product would reasonably be expected to cause severe personal injury or death, unless officers of the parties have executed an agreement specifically governing such use. Buyers represent that they have all necessary expertise in the safety and regulatory ramifications of their applications, and acknowledge and agree that they are solely responsible for all legal, regulatory and safety-related requirements concerning their products and any use of TI products in such safety-critical applications, notwithstanding any applications-related information or support that may be provided by TI. Further, Buyers must fully indemnify TI and its representatives against any damages arising out of the use of TI products in such safety-critical applications.

TI products are neither designed nor intended for use in military/aerospace applications or environments unless the TI products are specifically designated by TI as military-grade or "enhanced plastic." Only products designated by TI as military-grade meet military specifications. Buyers acknowledge and agree that any such use of TI products which TI has not designated as military-grade is solely at the Buyer's risk, and that they are solely responsible for compliance with all legal and regulatory requirements in connection with such use.

TI products are neither designed nor intended for use in automotive applications or environments unless the specific TI products are designated by TI as compliant with ISO/TS 16949 requirements. Buyers acknowledge and agree that, if they use any non-designated products in automotive applications, TI will not be responsible for any failure to meet such requirements.

Following are URLs where you can obtain information on other Texas Instruments products and application solutions:

Products		Applications	
Amplifiers	amplifier.ti.com	Audio	www.ti.com/audio
Data Converters	dataconverter.ti.com	Automotive	www.ti.com/automotive
DSP	dsp.ti.com	Broadband	www.ti.com/broadband
Interface	interface.ti.com	Digital Control	www.ti.com/digitalcontrol
Logic	logic.ti.com	Military	www.ti.com/military
Power Mgmt	power.ti.com	Optical Networking	www.ti.com/opticalnetwork
Microcontrollers	microcontroller.ti.com	Security	www.ti.com/security
RFID	www.ti-rfid.com	Telephony	www.ti.com/telephony
Low Power Wireless	www.ti.com/lpw	Video & Imaging	www.ti.com/video
		Wireless	www.ti.com/wireless

Mailing Address: Texas Instruments, Post Office Box 655303, Dallas, Texas 75265
Copyright © 2007, Texas Instruments Incorporated